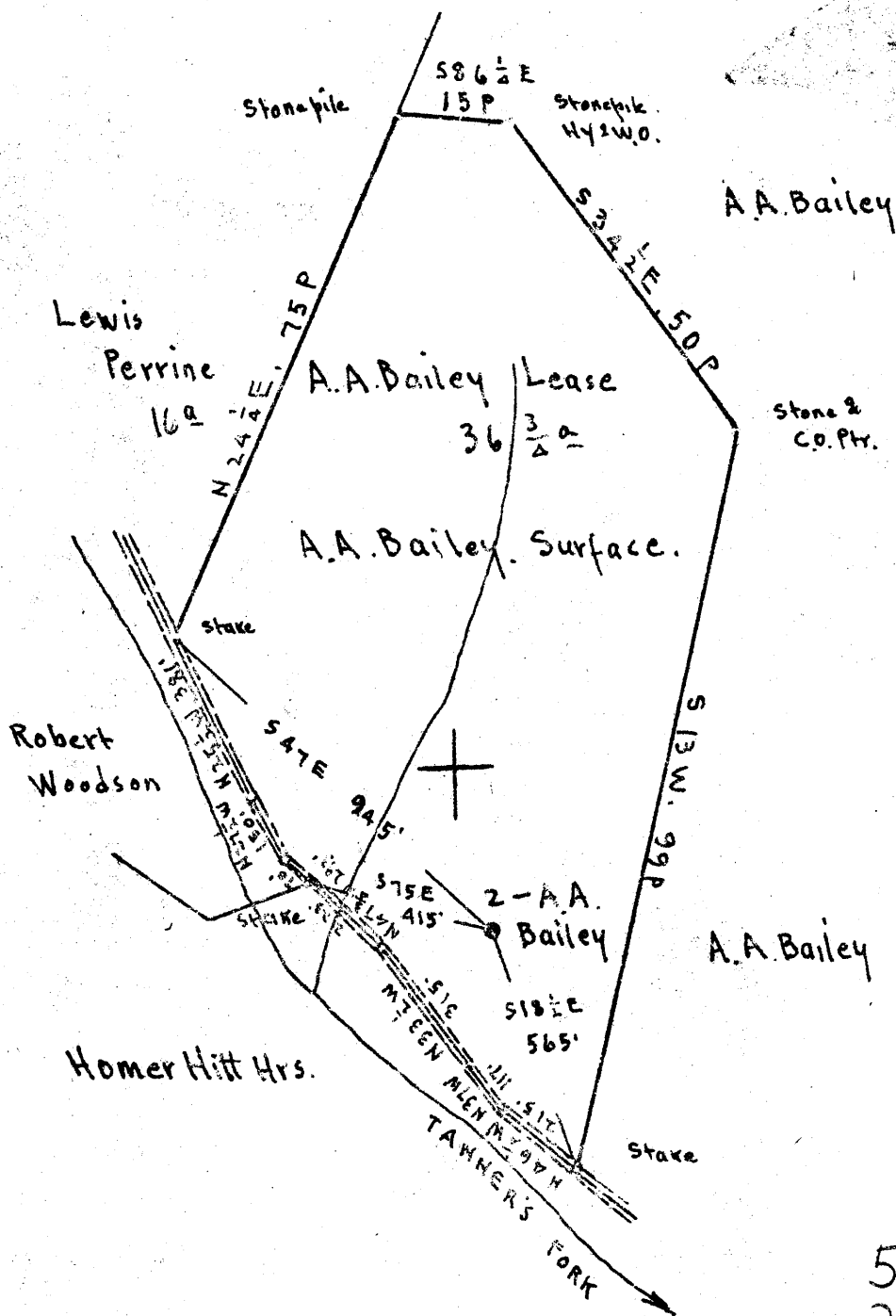


Scale: 1" = 400 Feet



5.24 S  
3.35 W

Surface: A.A. Bailey, R.F.D. #1, Kincheloe, W.Va.  
Coal: State of West Virginia.

New Location   
Oil Deeper   
Abandonment

On 400 map # 3951. S19 E3

Company Bradford Supply Co.  
 Address Mathion, Illinois  
 Farm A.A. Bailey  
 Tract Acres 36 3/4 Lease No. \_\_\_\_\_  
 Well (Farm) No. 2 Serial No. \_\_\_\_\_  
 Elevation (Spirit Level) Elser - 1178.80  
Ground - 1176.80  
 Quadrangle VADIS  
 County Harrison District Union  
 Engineer E.C. Tabler  
 Engineer's Registration No. \_\_\_\_\_  
 File No. \_\_\_\_\_ Drawing No. \_\_\_\_\_  
 Date May 24<sup>th</sup> 1948 Scale 1" = 400 Feet.

STATE OF WEST VIRGINIA  
DEPARTMENT OF MINES  
OIL AND GAS DIVISION  
CHARLESTON

WELL LOCATION MAP  
FILE NO. HAR-1204-A

+ Denotes location of well on United States Topographic Maps, scale 1 to 62,500, latitude and longitude lines being represented by border lines as shown.  
- Denotes one inch spaces on border line of original tracing.



STATE OF WEST VIRGINIA  
DEPARTMENT OF MINES  
OIL AND GAS DIVISION

1063

1204-A

WELL RECORD

Oil or Gas Well (KIND)

Permit No. 1204-A

Company Birmingham Lignite Co

Address W. Va. State

Farm G. G. Bailey Acres \_\_\_\_\_

Location (waters) \_\_\_\_\_

Well No. \_\_\_\_\_ Elev. \_\_\_\_\_

District Union County Harrison

The surface of tract is owned in fee by \_\_\_\_\_  
Address \_\_\_\_\_

Mineral rights are owned by \_\_\_\_\_  
Address \_\_\_\_\_

Drilling commenced \_\_\_\_\_

Drilling completed 7/9-1909

Date Shot \_\_\_\_\_ From \_\_\_\_\_ To \_\_\_\_\_

With \_\_\_\_\_

Open Flow \_\_\_\_\_ /10ths Water in \_\_\_\_\_ Inch  
\_\_\_\_\_ /10ths Merc. in \_\_\_\_\_ Inch

Volume \_\_\_\_\_ Cu. Ft.

Rock Pressure \_\_\_\_\_ lbs. \_\_\_\_\_ hrs.

Oil \_\_\_\_\_ bbls., 1st 24 hrs.

Fresh water \_\_\_\_\_ feet \_\_\_\_\_ feet

Salt water \_\_\_\_\_ feet \_\_\_\_\_ feet

Casing and Tubing	Used in Drilling	Left in Well	Packers
Size			
16			Kind of Packer
13			
10			Size of
8 1/4			
6 3/8			Depth set
5 3/16			
3			Perf. top
2			Perf. bottom
Liners Used			Perf. top
			Perf. bottom

CASING CEMENTED \_\_\_\_\_ SIZE \_\_\_\_\_ No. Ft. \_\_\_\_\_ Date \_\_\_\_\_

COAL WAS ENCOUNTERED AT 618 FEET 12 INCHES  
 \_\_\_\_\_ FEET \_\_\_\_\_ INCHES FEET \_\_\_\_\_ INCHES  
 \_\_\_\_\_ FEET \_\_\_\_\_ INCHES FEET \_\_\_\_\_ INCHES

Formation	Color	Hard or Soft	Top	Bottom	Oil, Gas or Water	Depth Found	Remarks
<u>Red sand</u>			<u>618</u>	<u>620</u>			
<u>Shale</u>			<u>1070</u>	<u>1120</u>			
<u>Gas sand</u>			<u>1298</u>	<u>1360</u>			
<u>1st salt</u>			<u>1420</u>	<u>1480</u>			
<u>2d "</u>			<u>1565</u>	<u>1755</u>			
<u>lignite</u>			<u>1980</u>	<u>2003</u>			
<u>Big "</u>			<u>2031</u>	<u>2078</u>			
<u>Big lignite</u>			<u>2678</u>	<u>2220</u>	<u>Gas 2076</u>		
<u>Sandstone</u>			<u>2247</u>	<u>2321</u>			
<u>Sand</u>			<u>2344</u>	<u>2354</u>			
<u>50 ft</u>			<u>2402</u>	<u>2425</u>			
<u>30 ft</u>			<u>2600</u>	<u>2622</u>			
<u>Shale</u>			<u>2663</u>	<u>2670</u>			
<u>Gordon</u>			<u>2686</u>	<u>2703</u>	<u>oil 2648</u>		
<u>Falcat Dep</u>				<u>2714</u>			

