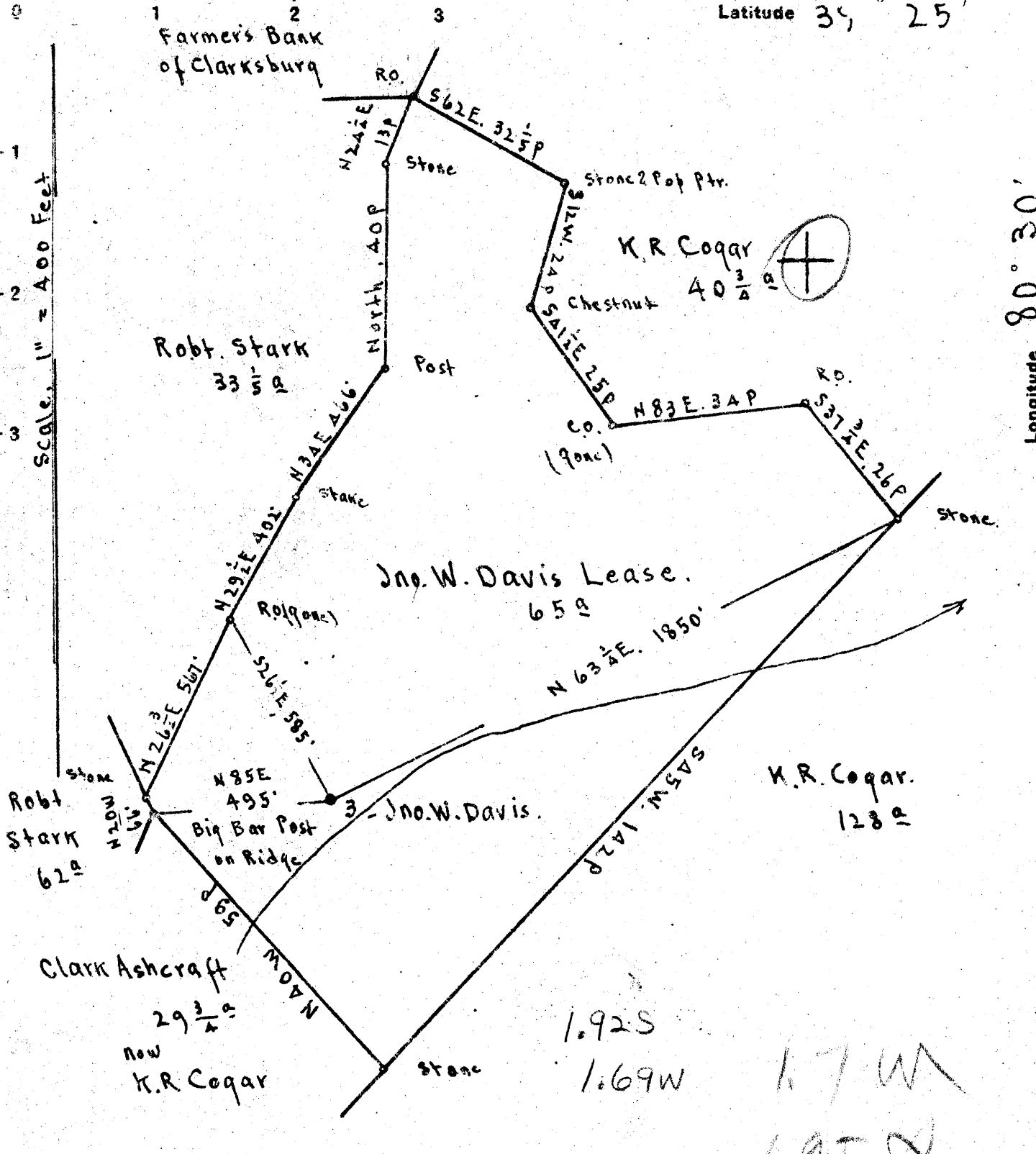


Latitude 34° 25'

Longitude 80° 30'



Surface: K.R. Coqar, R.F.D #1, Wallace, Harrison Co., W.Va.  
 Coal: Miss Margaret Anne Tetrick, 271 Clay St, Clarksburg, W.Va.

New Location   
 Drill Deeper   
 Abandonment

AUG 31 1948

On 400 map # 3252

SA-5 E5

Company Strauss 9th Beren  
 Address Marietta Ohio  
 Farm Jno W Davis  
 Tract \_\_\_\_\_ Acres 65 Lease No. \_\_\_\_\_  
 Well (Farm) No. 3 Serial No. \_\_\_\_\_  
 Elevation (Spirit Level) Floor = 1245.27  
Ground = 1243.75  
 Quadrangle CENTERPOINT  
 County Harrison District Sardis  
 Engineer E.C. Tabler  
 Engineer's Registration No. \_\_\_\_\_  
 File No. \_\_\_\_\_ Drawing No. \_\_\_\_\_  
 Date June 2nd 1948 Scale 1" = 400 Feet.

STATE OF WEST VIRGINIA  
 DEPARTMENT OF MINES  
 OIL AND GAS DIVISION  
 CHARLESTON

WELL LOCATION MAP  
 FILE NO. HAR-1225-A

+ Denotes location of well on United States Topographic Maps, scale 1 to 62,500, latitude and longitude lines being represented by border lines as shown.  
 - Denotes one inch spaces on border line of original tracing.



994

STATE OF WEST VIRGINIA  
DEPARTMENT OF MINES  
OIL AND GAS DIVISION

WELL RECORD

Oil or Gas Well \_\_\_\_\_  
(KIND)

Permit No. 1275-A

Company Strauss & Beron  
Address Marietta, Ohio  
Farm John W. Davis Acres 65  
Location (waters) McIntyre Fork  
Well No. 3 Elev. 1245.27  
District Sardis County Harrison  
The surface of tract is owned in fee by K. R. Cogar  
Address R# 1, Wallace, W. Va.  
Mineral rights are owned by Miss Margaret Anne  
Tetrick Address 271 Clay Street,  
Clarksburg, W. Va.  
Drilling commenced \_\_\_\_\_  
Drilling completed \_\_\_\_\_  
Date Shot \_\_\_\_\_ From \_\_\_\_\_ To \_\_\_\_\_  
With \_\_\_\_\_

Casing and Tubing	Used in Drilling	Left in Well	Packers
Size			
16			Kind of Packer
18			
10	285	none	Size of
8 1/2	1421	none	
6	2315	2315	Depth set
5 3/16	2942	2942	
			Perf. top
			Perf. bottom
Liners Used			Perf. top
			Perf. bottom

Open Flow \_\_\_\_\_ /10ths Water in \_\_\_\_\_ Inch  
\_\_\_\_\_ /10ths Merc. in \_\_\_\_\_ Inch  
Volume \_\_\_\_\_ Cu. Ft.  
Rock Pressure \_\_\_\_\_ lbs. \_\_\_\_\_ hrs.  
Oil \_\_\_\_\_ bbls., 1st 24 hrs.  
Fresh water \_\_\_\_\_ feet \_\_\_\_\_ feet  
Salt water \_\_\_\_\_ feet \_\_\_\_\_ feet

CASING CEMENTED \_\_\_\_\_ SIZE \_\_\_\_\_ No. Ft. \_\_\_\_\_ Date \_\_\_\_\_  
COAL WAS ENCOUNTERED AT 994 FEET \_\_\_\_\_ INCHES  
\_\_\_\_\_ FEET \_\_\_\_\_ INCHES FEET \_\_\_\_\_ INCHES  
\_\_\_\_\_ FEET \_\_\_\_\_ INCHES FEET \_\_\_\_\_ INCHES

Formation	Color	Hard or Soft	Top	Bottom	Oil, Gas or Water	Depth Found	Remarks
Pgh. Coal			994	999			
Little Dunkard			1380	1442			
1st Salt Sand			1785	1830			
2nd Salt Sand			1895	1940			
Maxon Sand			2090	2133			
Little Lime			2257	2264			
Big Lime			2267	2315			
Pencil Cave			2264	2267			
Big Injun			2315	2425			
Gantz Sand			2899	2915			
50ft Sand			2915	2994			
Gordon Sand, Stray			3041	3090			
Gordon Sand			3103	3124			
Fourth Sand			3133	3141			
TOTAL DEPTH				3145			

