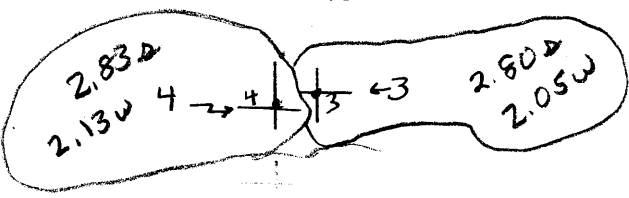
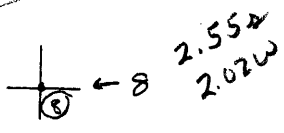
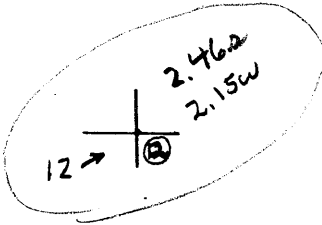


LATITUDE 39° 20' 00"

LONGITUDE 80° 27' 30"



7'5 OGIS topo location

7.5' loc \_\_\_\_\_ 15' loc \_\_\_\_\_  
 (calc.) \_\_\_\_\_

Company Valley Steel Products Co.

Farm J. S. Dakon

Quad Wolf Summit 7 1/2

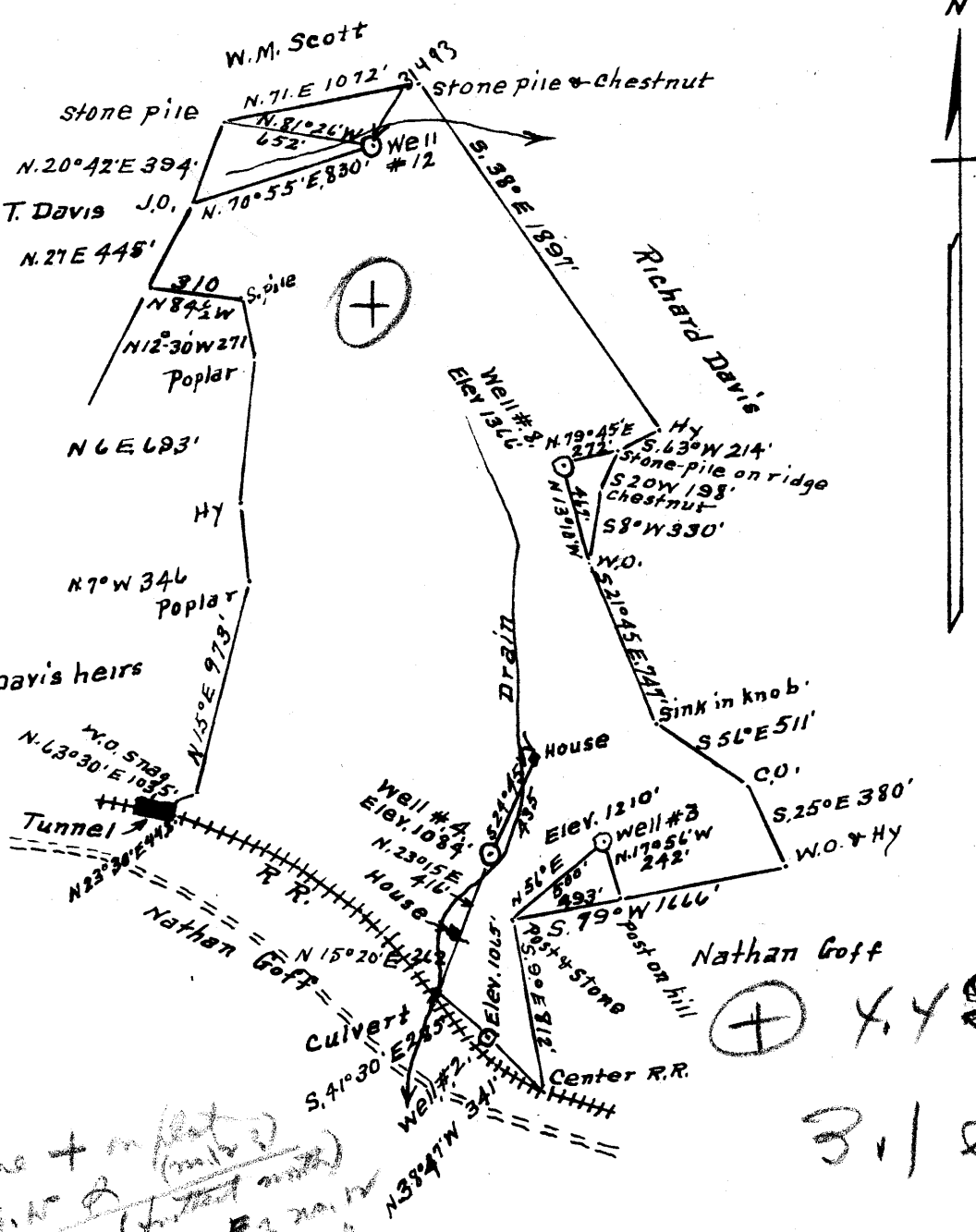
County Harrison

District Tenmile

### WELL LOCATION MAP

- File No. \_\_\_\_\_
- HAR-1490A P-#3
  - HAR-1491A P-#4
  - HAR-1492A P-#8
  - HAR-1493A P-#12

1  
2  
3



only one + in plot  
 4.40 W - 3.10 E (meters)  
 1/2 mi - 0.77 E & 0.10 E  
 2 mi - 2.180 E & 0.10 E  
 2 mi - 0.64 E & 0.10 E  
 1/2 mi - 0.076 E & 0.16 E

⊕ 4.45 W  
 3.10 E

New Location   
 Drill Deeper   
 Abandonment

MAR 12 1952

MAR 28 1952

Well # 2. Hood Edgell, R # 2. Bristol, W Va  
 Well # 4 Clarence Matthey " " "  
 Surface = Well # 3 Harry Hurst " " "  
 Well # 8 " " " "  
 Well # 12 Mrs. Rufus Davis " " "

Company Valley Steel Products Co.  
 Address St Louis, Missouri  
 Farm J. S. Dakon  
 Tract 1 Acres 160 Lease No. \_\_\_\_\_  
 Well (Farm) No. 3-2-3-12 Serial No. 2-1065 #3-1210 NO. 4-1084  
 Elevation (Spirit Level) NO. 8-1366 NO. 12-1235  
 Quadrangle Clarksburg  
 County Harrison District Tenmile  
 Engineer A. L. Headley  
 Engineer's Registration No. 2021  
 File No. \_\_\_\_\_ Drawing No. \_\_\_\_\_  
 Date 9-16-1951 Scale 1" = 800'

STATE OF WEST VIRGINIA  
 DEPARTMENT OF MINES  
 OIL AND GAS DIVISION  
 CHARLESTON

**WELL LOCATION MAP**  
 FILE NO. HAR-1489-P-#2  
HAR-1490-P-#3  
HAR-1493-#12 HAR-1491-P-#4  
HAR-1492-P-#8

+ Denotes location of well on United States Topographic Maps, scale 1 to 62,500, latitude and longitude lines being represented by border lines as shown.

- Denotes one inch spaces on border line of original tracing.



STATE OF WEST VIRGINIA  
DEPARTMENT OF MINES  
OIL AND GAS DIVISION

1497

WELL RECORD

Oil or Gas Well (KIND)

Quadrangle \_\_\_\_\_  
 Permit No. 1497  
 Company Finch & Snider  
 Address Salem, W. Va.  
 Farm J. S. Dakon Acres 160  
 Location (waters) \_\_\_\_\_  
 Well No. 4 Elev. 1084'  
 District Tenmile County Harrison  
 The surface of tract is owned in fee by \_\_\_\_\_  
 Address See Map  
 Mineral rights are owned by See Map  
 Address \_\_\_\_\_  
 Drilling commenced \_\_\_\_\_  
 Drilling completed \_\_\_\_\_  
 Date Shot \_\_\_\_\_ From \_\_\_\_\_ To \_\_\_\_\_  
 With \_\_\_\_\_  
 Open Flow \_\_\_\_\_ /10ths Water in \_\_\_\_\_ Inch  
 \_\_\_\_\_ /10ths Merc. in \_\_\_\_\_ Inch  
 Volume \_\_\_\_\_ Cu. Ft.  
 Rock Pressure \_\_\_\_\_ lbs. \_\_\_\_\_ hrs.  
 Oil \_\_\_\_\_ bbls., 1st 24 hrs.  
 Fresh water \_\_\_\_\_ feet \_\_\_\_\_ feet  
 Salt water \_\_\_\_\_ feet \_\_\_\_\_ feet

Casing and Tubing	Used in Drilling	Left in Well	Packers
Size			
16			Kind of Packer
13			
10			Size of
8 1/4	998	998	
6 3/4	1905	1905	Depth set
5 3/16			
3			Perf. top
2			Perf. bottom
Liners Used			Perf. top
			Perf. bottom

CASING CEMENTED \_\_\_\_\_ SIZE \_\_\_\_\_ No. Ft. \_\_\_\_\_ Date \_\_\_\_\_  
 COAL WAS ENCOUNTERED AT \_\_\_\_\_ FEET \_\_\_\_\_ INCHES  
 \_\_\_\_\_ FEET \_\_\_\_\_ INCHES FEET \_\_\_\_\_ INCHES  
 \_\_\_\_\_ FEET \_\_\_\_\_ INCHES FEET \_\_\_\_\_ INCHES

Formation	Color	Hard or Soft	Top	Bottom	Oil, Gas or Water	Depth Found	Remarks
Pittsburgh	Coal		456	466			
Big Injun			1855	1905			
Fifty-Foot Sand			2349	2379			
Gordon			2530	2552			
First Pay			2540				
Second Pay			2547				
Total Depth				2580			

