

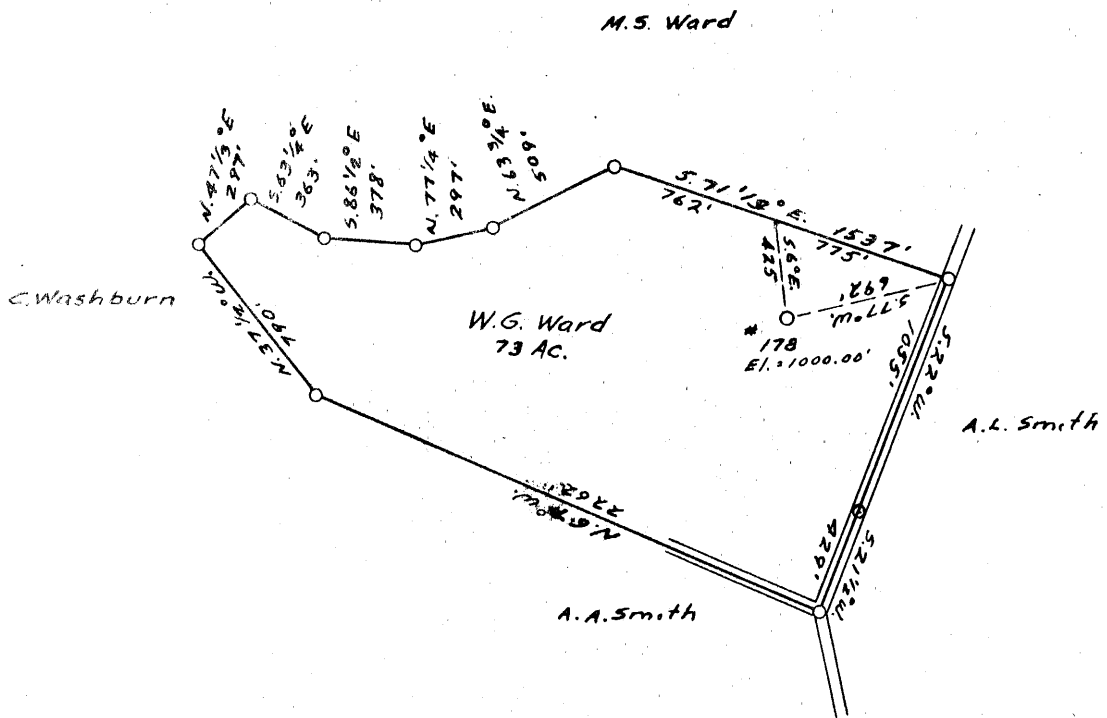
0 1 2 3 LATITUDE 39 0 15

-1

-2

-3

LONGITUDE 80 0 25



4.74S  
0.03W

COAL OWNED BY \_\_\_\_\_

NEW LOCATION...

DRILL DEEPER...

ABANDONMENT...

COMPANY Cumberland & Allegheny Gas

ADDRESS 800 Union Trust Bldg. Pgh. Pa

FARM W. G. Ward

TRACT \_\_\_\_\_ ACRES 73.391 LEASE NO. 241

WELL (FARM) No. 1 SERIAL No. 178

ELEVATION (SPIRIT LEVEL) 1000.00'

QUADRANGLE Weston NW

COUNTY Harrison DISTRICT Grant

ENGINEER Thomas E. Virgin - J.M.

ENGINEER'S REGISTRATION No. 1503

FILE No. \_\_\_\_\_ DRAWING No. K-13-944

DATE 28 Feb. 1954 SCALE 1" = 800'

STATE OF WEST VIRGINIA  
DEPARTMENT OF MINES  
OIL AND GAS DIVISION  
CHARLESTON

**WELL LOCATION MAP**

FILE No. HAR-1617-A

+ DENOTES LOCATION OF WELL ON UNITED STATES TOPOGRAPHIC MAPS. SCALE 1 TO 62,500. LATITUDE AND LONGITUDE LINES BEING REPRESENTED BY BORDER LINES AS SHOWN.

- DENOTES ONE INCH SPACES ON BORDER LINE OF ORIGINAL TRACING.



STATE OF WEST VIRGINIA  
DEPARTMENT OF MINES  
OIL AND GAS DIVISION

WELL RECORD

1503

Permit No. 1617-A Oil or Gas Well Gas (KIND)

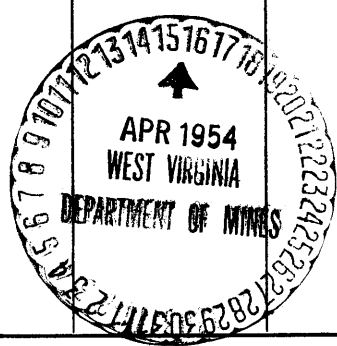
Company CUMBERLAND AND ALLEGHENY GAS COMPANY  
Address 800 Union Trust Building, Pgh., Penna.  
Farm W. G. Ward (H. D. Gaston) Acres 73.391  
Location (waters) \_\_\_\_\_  
Well No. 1-178 Elev. 1000.00  
District Grant County Harrison  
The surface of tract is owned in fee by \_\_\_\_\_  
Address \_\_\_\_\_  
Mineral rights are owned by \_\_\_\_\_  
Address \_\_\_\_\_  
Drilling commenced October 8, 1917  
Drilling completed December 22, 1917  
Date Shot \_\_\_\_\_ From \_\_\_\_\_ To \_\_\_\_\_  
With \_\_\_\_\_  
Open Flow \_\_\_\_\_ /10ths Water in \_\_\_\_\_ Inch  
\_\_\_\_\_ /10ths Merc. in \_\_\_\_\_ Inch  
Volume \_\_\_\_\_ Cu. Ft.  
Rock Pressure \_\_\_\_\_ lbs. \_\_\_\_\_ hrs.  
Oil \_\_\_\_\_ bbls., 1st 24 hrs.  
Fresh water \_\_\_\_\_ feet \_\_\_\_\_ feet  
Salt water \_\_\_\_\_ feet \_\_\_\_\_ feet

Casing and Tubing	Used in Drilling	Left in Well	Packers
Size			Kind of Packer
16			
13			
10	<b>102</b>	<b>Pulled</b>	Size of
8 1/4			
6 1/2	<b>1270</b>	<b>1270</b>	Depth set
5 3/16			
3			Perf. top
2			Perf. bottom
Liners Used			Perf. top
			Perf. bottom

CASING CEMENTED \_\_\_\_\_ SIZE \_\_\_\_\_ No. Ft. \_\_\_\_\_ Date \_\_\_\_\_

COAL WAS ENCOUNTERED AT 155 FEET \_\_\_\_\_ INCHES  
\_\_\_\_\_ FEET \_\_\_\_\_ INCHES FEET \_\_\_\_\_ INCHES  
\_\_\_\_\_ FEET \_\_\_\_\_ INCHES FEET \_\_\_\_\_ INCHES

Formation	Color	Hard or Soft	Top	Bottom	Oil, Gas or Water	Depth Found	Remarks
Coal			155	160			
Big Dunkard			170	224			
Gas Sand			265	300			
First Salt Sand			540	667			
Second Salt Sand			675	705			
Third Salt Sand			726	850			
Mason			880	970			
Little Lime			1195	1210			
Pencil Cave			1210	1220			
Big Lime			1220	1285			
Big Injun			1285	1384			
Squaw			1390	1420			
Fifty-Foot			1715	1742			
Gordon Stray			1900	1917			
Gordon			1978	2005			
Fourth			2040	2060			
Fifth			2139	2148			
					Gas 2131 and 2141.		
							Well developed 350,880 cf., after being shot with 30 qts., from the Fifth Sand; Cased before shooting, 213,120 cf. Hole filled up to 2171. 6-5/8 x 2 Anchor Packer set at 2004' - 2" Tubing



(Over)  
NOV 12 1954

