



New Location   
 Drill Deeper   
 Abandonment

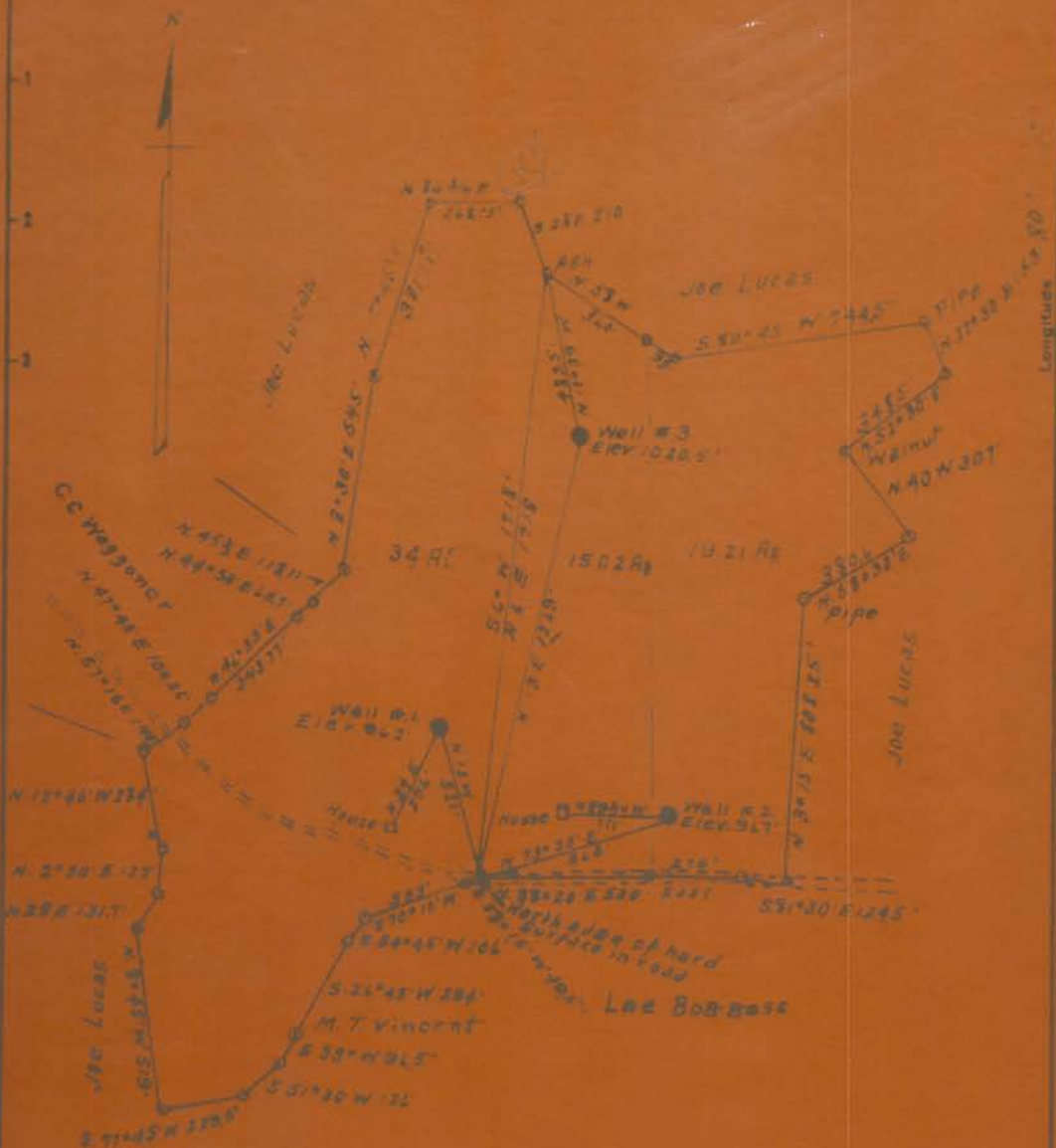
Surface well #1 RS Coffandaffer  
 Skinston, W.Va.  
 Wells # 1 & 2 Joseph S. Lucas  
 Skinston, W.Va.  
 Coal - Stuetzer Coal Co  
 Fairmont W.Va.

Company Dunn-Mar Oil & Gas Co  
 Address Waynesburg, Pa  
 Farm W H Lucas  
 Tract 1 Acres 61 Lease No. 417  
 Well (Farm) No 1-1-2 Serial No 2112  
 Elevation (Spirit Level) 82 61 1205  
 Quadrangle Clarkeburg  
 County Harrison District Clay  
 Engineer A L Headley  
 Engineer's Registration No 2811

STATE OF WEST VIRGINIA  
 DEPARTMENT OF MINES  
 OIL AND GAS DIVISION  
 CHARLESTON

WELL LOCATION MAP  
 FILE NO WAR-1695-A-23

4 Denotes location of well on United States Topographic Map, scale 1 in = 62,500, latitude and longitude lines being represented by border lines as shown.



Surface - Well #1 RS Coppindaffer  
Shinston, W.Va.  
Wells # 2 & 3 Joseph G. Lucas  
Shinston, W.Va.  
Coal - Stoetter Coal Co  
Fairmont, W.Va.

New Location   
Drill Deeper   
Abandonment

Company *Dunn, Mar Oil & Gas Co*  
Address *Waynesburg, Pa*  
Farm *N. G. Lucas*

STATE OF WEST VIRGINIA  
DEPARTMENT OF MINES  
OIL AND GAS DIVISION  
CHARLESTON