

5.15S  
3.04W

- New Location
- Drill Deeper
- Abandonment

Company A. M. Snider  
 Address 60 Sunset Dr. Fairmont, W. Va.  
 Farm W. V. Stone  
 Tract \_\_\_\_\_ Acres 160 Lease No. \_\_\_\_\_  
 Well (Farm) No. 3630 Serial No. \_\_\_\_\_  
 Elevation (Spirit Level) 921  
 Quadrangle Clarksburg  
 County Harrison District Coal  
 Engineer Edmund H. Highman  
 Engineer's Registration No. 1868  
 File No. A. M. S. Drawing No. 7  
 Date Nov. 18, 1958 Scale 1" = 80 Poles

STATE OF WEST VIRGINIA  
 DEPARTMENT OF MINES  
 OIL AND GAS DIVISION  
 CHARLESTON

WELL LOCATION MAP  
 FILE NO. HAR-1706-A

+ Denotes location of well on United States Topographic Maps, scale 1 to 62,500, latitude and longitude lines being represented by border lines as shown.

- Denotes one inch spaces on border line of original tracing.



1597

STATE OF WEST VIRGINIA  
DEPARTMENT OF MINES  
OIL AND GAS DIVISION

Quadrangle Clarksburg

Permit No. 1706A

WELL RECORD

Oil or Gas Well Gas  
(KIND)

Company A. M. Snider  
Address Hundred, W. Va.  
Farm W. V. Stone Acres 160  
Location (waters) Simpson Creek  
Well No. H.N.G. 3630 Elev. 921'  
District Simpson County Harrison  
The surface of tract is owned in fee by J.M. Haley  
Address Bridgeport, W. Va.  
Mineral rights are owned by J.M. Haley et al  
Address Bridgeport, W. Va.

Casing and Tubing	Used in Drilling	Left in Well	Packers
Size			
16			Kind of Packer <u>NR</u>
13	<u>21'-7"</u>	<u>21'-7"</u>	
10	<u>197'</u>	<u>197'</u>	Size of
8 1/4	<u>958'</u>	<u>958'</u>	
6 5/8	<u>1421'</u>	<u>1421'</u>	Depth set
5 3/16	<u>2156'</u>		
3			Perf. top
2	<u>3159'</u>		Perf. bottom
Liners Used			Perf. top
			Perf. bottom

Drilling commenced Aug. 10, 1914  
Drilling completed Nov. 7, 1914  
Date Shot 11-9-14 From Bayard Sand  
With 40 qts. Shot for oil-No record results  
Open Flow /10ths Water in \_\_\_\_\_ Inch  
/10ths Merc. in \_\_\_\_\_ Inch  
Volume \_\_\_\_\_ Cu. Ft.  
Rock Pressure \_\_\_\_\_ lbs. \_\_\_\_\_ hrs.  
Oil \_\_\_\_\_ bbls., 1st 24 hrs.  
WELL ACIDIZED \_\_\_\_\_  
WELL FRACTURED \_\_\_\_\_

CASING CEMENTED \_\_\_\_\_ SIZE \_\_\_\_\_ No. Ft. \_\_\_\_\_ Date \_\_\_\_\_  
COAL WAS ENCOUNTERED AT \_\_\_\_\_ FEET \_\_\_\_\_ INCHES  
\_\_\_\_\_ FEET \_\_\_\_\_ INCHES \_\_\_\_\_ FEET \_\_\_\_\_ INCHES  
\_\_\_\_\_ FEET \_\_\_\_\_ INCHES \_\_\_\_\_ FEET \_\_\_\_\_ INCHES

RESULT AFTER TREATMENT \_\_\_\_\_

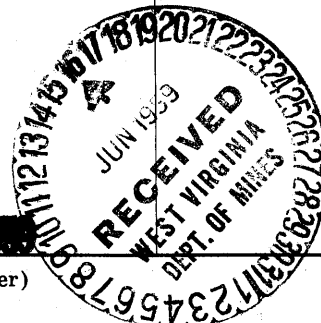
ROCK PRESSURE AFTER TREATMENT \_\_\_\_\_

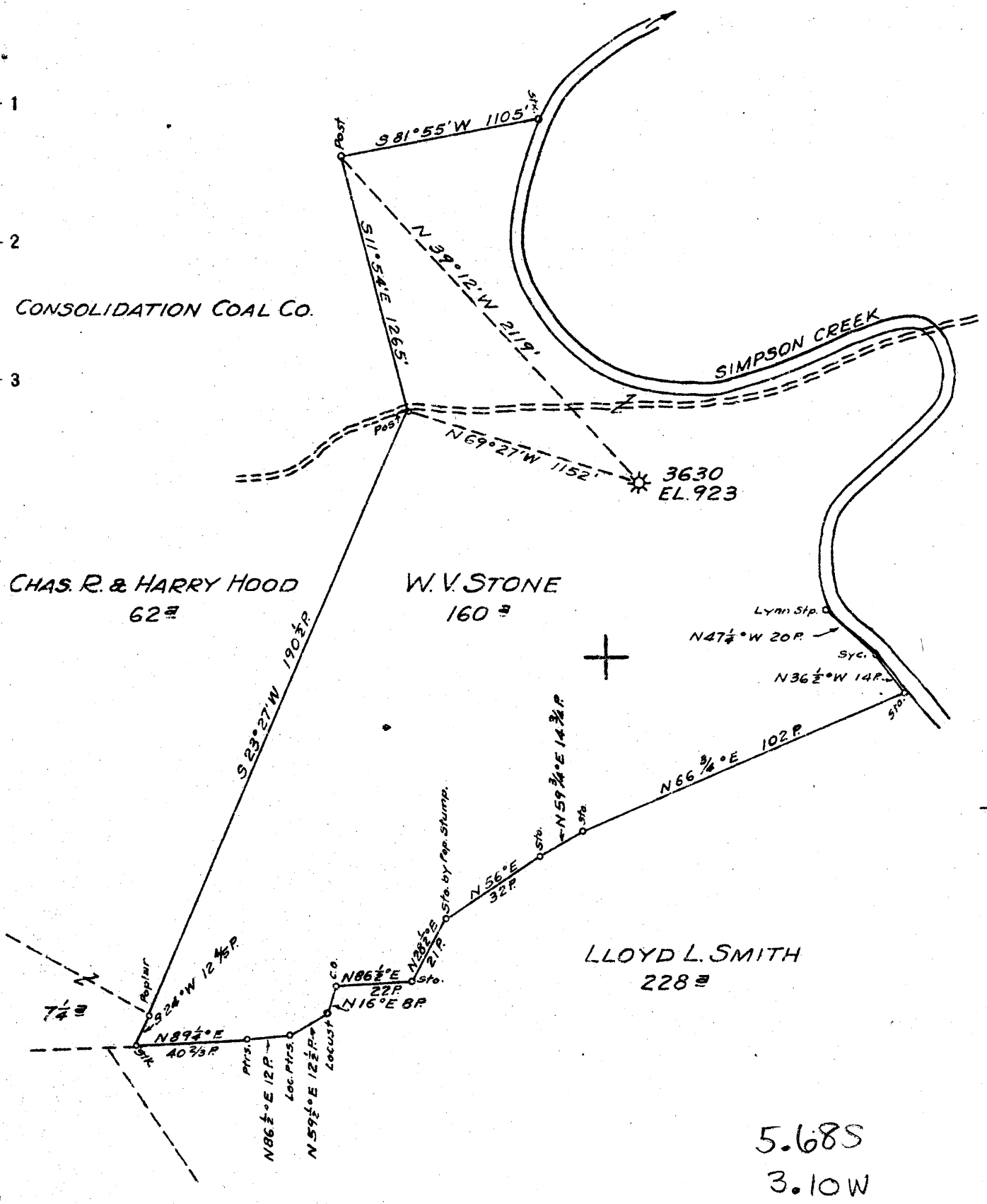
Fresh Water \_\_\_\_\_ Feet Salt Water \_\_\_\_\_ Feet

Formation	Color	Hard or Soft	Top	Bottom	Oil, Gas or Water	Depth	Remarks
Dunkard Sand			472	537			
Salt Sand			700	908	Gas at 704'		Water 721' & 765'
Injun Sand			1420	1511	Gas at 1424'		
50' Sand			1904	1993	Gas at 1973'		
30' Sand			1997	2035			
Stray Sand			2148	2160			
Gordon Sand			2196	2205			
4th Sand			2219	2245			
5th Sand			2271	2296			
Bayard Sand			2403	2440	Oil at 2405'		
Speechley Sand			3106	3113	Gas at 3108' - 3109'		
Total Depth				3143			
Plugged back to				2120'			
Total Depth				2120'			

JUL 23 1914

(over)





New Location   
 Drill Deeper   
 Abandonment  (PARTIAL)

Map Sheet 41 Square S 8 E 17 F. B. 512 P. 39

Company	HOPE NATURAL GAS CO.
Address	CLARKSBURG, W. VA.
Farm	W. V. STONE
Tract	Acres 160 Lease No. 4762
Well (Farm) No.	Serial No. 3630
Elevation (Spirit Level)	923
Quadrangle	CLARKSBURG
County	HARRISON District COAL
Engineer	W. M. Bowen
Engineer's Registration No.	900
File No.	Drawing No.
Date	MAY 16, 1945 Scale 1" = 40 P.

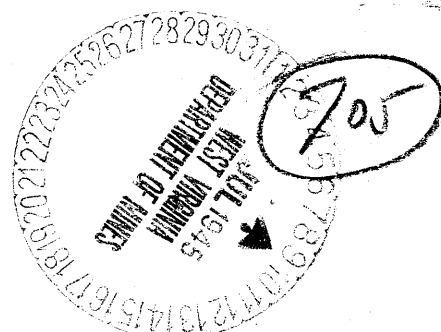
STATE OF WEST VIRGINIA  
 DEPARTMENT OF MINES  
 OIL AND GAS DIVISION  
 CHARLESTON

WELL LOCATION MAP  
 FILE NO. HAR-863-A

+ Denotes location of well on United States Topographic Maps, scale 1 to 62,500, latitude and longitude lines being represented by border lines as shown.  
 - Denotes one inch spaces on border line of original tracing.



STATE OF WEST VIRGINIA  
DEPARTMENT OF MINES  
OIL AND GAS DIVISION



**WELL RECORD**

Permit No. 863-A Oil or Gas Well \_\_\_\_\_ (KIND)

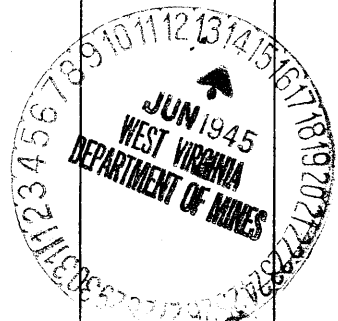
Company Hope Natural Gas Company.  
 Address 445 West Main St. Clarksburg, W.Va.  
 Farm W.V. Stone Acres 160  
 Location (waters) \_\_\_\_\_  
 Well No. 3630 Elev. 923  
 District Coal County Harrison  
 The surface of tract is owned in fee by \_\_\_\_\_  
 Address \_\_\_\_\_  
 Mineral rights are owned by \_\_\_\_\_  
 Address \_\_\_\_\_  
 Drilling commenced September 14, 1914  
 Drilling completed November 7, 1914  
 Date Shot \_\_\_\_\_ From \_\_\_\_\_ To \_\_\_\_\_  
 With \_\_\_\_\_  
 Open Flow \_\_\_\_\_ /10ths Water in \_\_\_\_\_ Inch  
 \_\_\_\_\_ /10ths Merc. in \_\_\_\_\_ Inch  
 Volume \_\_\_\_\_ Cu. Ft.  
 Rock Pressure \_\_\_\_\_ lbs. \_\_\_\_\_ hrs.  
 Oil \_\_\_\_\_ bbls., 1st 24 hrs.  
 Fresh water 721 765 feet \_\_\_\_\_ feet  
 Salt water none recorded feet \_\_\_\_\_ feet

Casing and Tubing	Used in Drilling	Left in Well	Packers
Size			
16			Kind of Packer
13	21	21	
10	197	197	Size of
8 1/4	958	958	
6 1/2	1421	1421	Depth set
5 3/16			
3			Perf. top
2			Perf. bottom
Liners Used			Perf. top
			Perf. bottom

**Not cemented**  
 CASING CEMENTED \_\_\_\_\_ SIZE \_\_\_\_\_ No. Ft. \_\_\_\_\_ Date \_\_\_\_\_  
**none recorded**  
 COAL WAS ENCOUNTERED AT \_\_\_\_\_ FEET \_\_\_\_\_ INCHES  
 \_\_\_\_\_ FEET \_\_\_\_\_ INCHES FEET \_\_\_\_\_ INCHES  
 \_\_\_\_\_ FEET \_\_\_\_\_ INCHES FEET \_\_\_\_\_ INCHES

Formation	Color	Hard or Soft	Top	Bottom	Oil, Gas or Water	Depth Found	Remarks
Little Dunkard			472	484			
Big Dunkard			507	537			
Gas sand			620	672			
First Salt			700	795	gas show	704	
Second Salt			800	908			
Little Lime			1328	1340			
Pencil cave			1340	1370			
BIG Lime			1370	1420			
Big Injun			1420	1511	gas	1424	
Fifty foot			1904	1993	gas	1973	
Thirty Foot			1997	2035			
Gordon stray			2148	2160			
Gordon			2196	2205			
Fourth			2219	2245			
Fifth			2271	2296			
Bayard			2403	2440	gas	2405	
Speechley			3106	3118	gas	3108	
Total depth				3143			

TO BE PARTIALLY ABANDONED.



AUG - 8 1945

Formation	Color	Hard or Soft	Top	Bottom	Oil, Gas or Water	Depth Found	Remarks

Date June 12, 1945., 194

APPROVED Hope Natural Gas Company, Owner

By *Ed. Frank*  
 Ass't. to Gen. Sup't. (Title)

