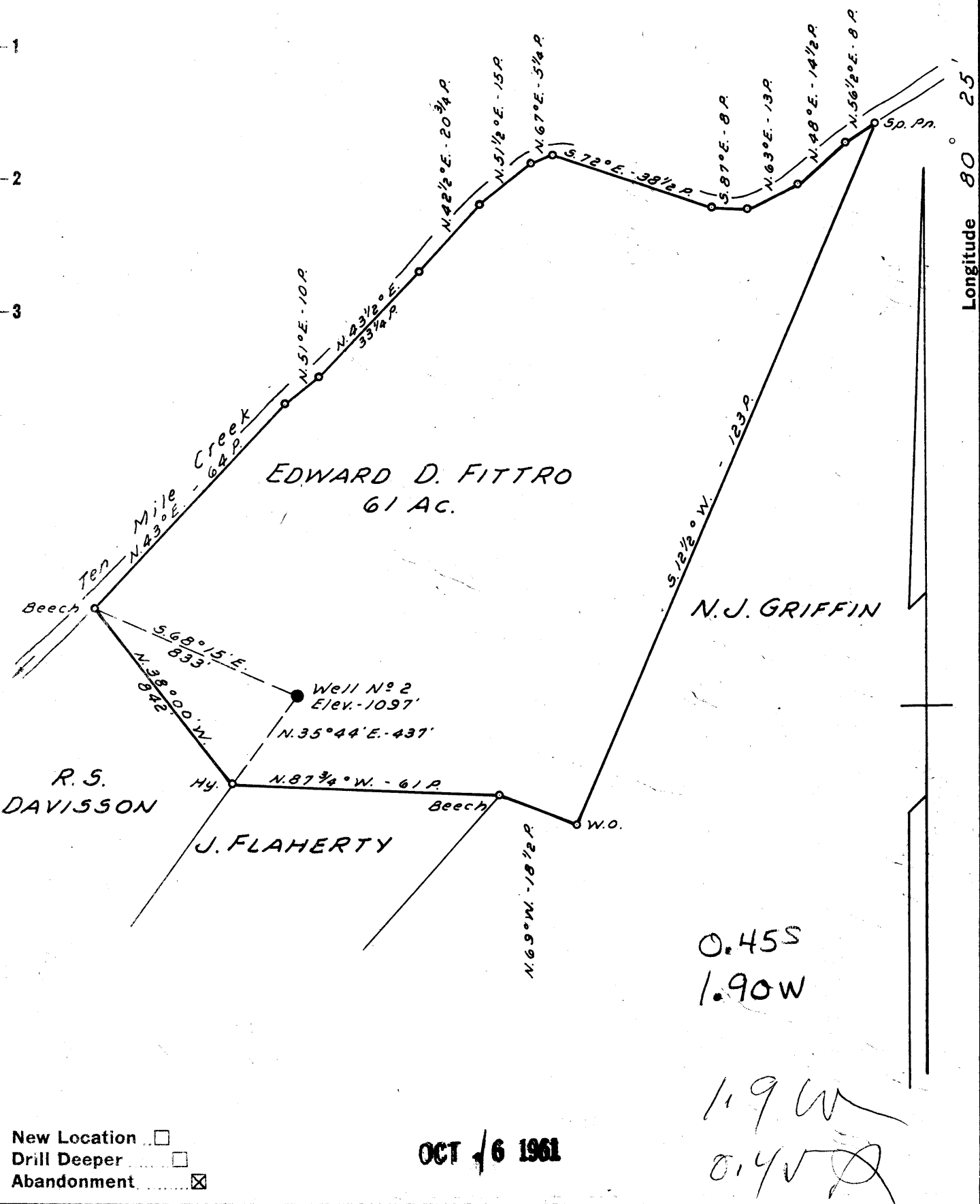


Latitude 39° 20'



Longitude 80° 25'



Company RICHARD JACKSON INC.  
 Address 614 E. MAIN ST. CLARKSBURG, W. VA.  
 Farm EDWARD D. FITTRO  
 Tract \_\_\_\_\_ Acres 61 Lease No. \_\_\_\_\_  
 Well (Farm) No. 2 Serial No. \_\_\_\_\_  
 Elevation (Spirit Level) 1097'  
 Quadrangle CLARKSBURG  
 County HARRISON District TEN MILE  
 Engineer John W. Hamilton  
 Engineer's Registration No. 2274  
 File No. \_\_\_\_\_ Drawing No. \_\_\_\_\_  
 Date MAY 14, 1961 Scale 1" = 30 POLES

STATE OF WEST VIRGINIA  
 DEPARTMENT OF MINES  
 OIL AND GAS DIVISION  
 CHARLESTON

**WELL LOCATION MAP**  
 FILE NO. HAR-1789-A

+ Denotes location of well on United States Topographic Maps, scale 1 to 62,500, latitude and longitude lines being represented by border lines as shown.

- Denotes one inch spaces on border line of original tracing.



1605

STATE OF WEST VIRGINIA  
DEPARTMENT OF MINES  
OIL AND GAS DIVISION

*Clatsburg*

Quadrangle \_\_\_\_\_

Permit No. HAR-1789 A

WELL RECORD

Oil or Gas Well Oil  
(KIND)

Company Richard Jackson, Inc.  
Address 624 Mulberry Ave., Clarksburg, W. Va.  
Farm E. D. Fittro Acres 61  
Location (waters) Ten Mile Creek  
Well No. 2 Elev. 1097'  
District Ten Mile County Harrison  
The surface of tract is owned in fee by E. D. Fittro  
Marshville, W. Va. Address \_\_\_\_\_  
Mineral rights are owned by Same  
Address \_\_\_\_\_

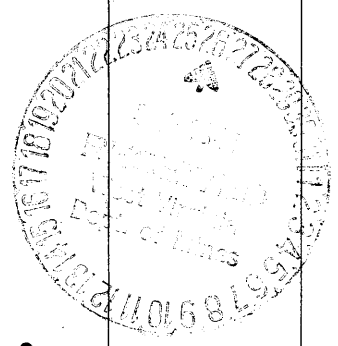
Casing and Tubing	Used in Drilling	Left in Well	Packers
Size			Kind of Packer _____
16			
13			
10	<b>300'</b>	<b>300'</b>	Size of _____
8 1/4	<b>830'</b>	<b>830'</b>	
6 5/8	<b>1710'</b>	<b>1710'</b>	Depth set _____
5 3/16			
3			Perf. top _____
2	<b>2680'</b>	<b>2680'</b>	Perf. bottom _____
Liners Used			Perf. top _____
	<b>6 1 1/2" Liner</b>		Perf. bottom _____

Drilling commenced \_\_\_\_\_  
Drilling completed \_\_\_\_\_  
Date Shot \_\_\_\_\_ From \_\_\_\_\_ To \_\_\_\_\_  
With \_\_\_\_\_  
Open Flow \_\_\_\_\_ /10ths Water in \_\_\_\_\_ Inch  
\_\_\_\_\_ /10ths Merc. in \_\_\_\_\_ Inch  
Volume \_\_\_\_\_ Cu. Ft.  
Rock Pressure \_\_\_\_\_ lbs. \_\_\_\_\_ hrs.  
Oil \_\_\_\_\_ bbls., 1st 24 hrs.  
WELL ACIDIZED \_\_\_\_\_  
WELL FRACTURED \_\_\_\_\_

CASING CEMENTED \_\_\_\_\_ SIZE \_\_\_\_\_ No. Ft. \_\_\_\_\_ Date \_\_\_\_\_  
COAL WAS ENCOUNTERED AT \_\_\_\_\_ FEET \_\_\_\_\_ INCHES  
\_\_\_\_\_ FEET \_\_\_\_\_ INCHES FEET \_\_\_\_\_ INCHES  
\_\_\_\_\_ FEET \_\_\_\_\_ INCHES FEET \_\_\_\_\_ INCHES

RESULT AFTER TREATMENT \_\_\_\_\_  
ROCK PRESSURE AFTER TREATMENT \_\_\_\_\_  
Fresh Water \_\_\_\_\_ Feet Salt Water \_\_\_\_\_ Feet

Formation	Color	Hard or Soft	Top	Bottom	Oil, Gas or Water	Depth	Remarks
Pitts Coal			265	270			
Dunkard Sand			765	830			
Salt Sand			1135	1225			
Hanson Sand			1480	1565			
Big Lime			1565	1645			
Big Injun			1645	1725			
Fifty Foot			2235	2285			
Gordon Sand			2415	2455			
Fifth Sand			2657	2684			
Total Depth				2680			



APR 6 1962