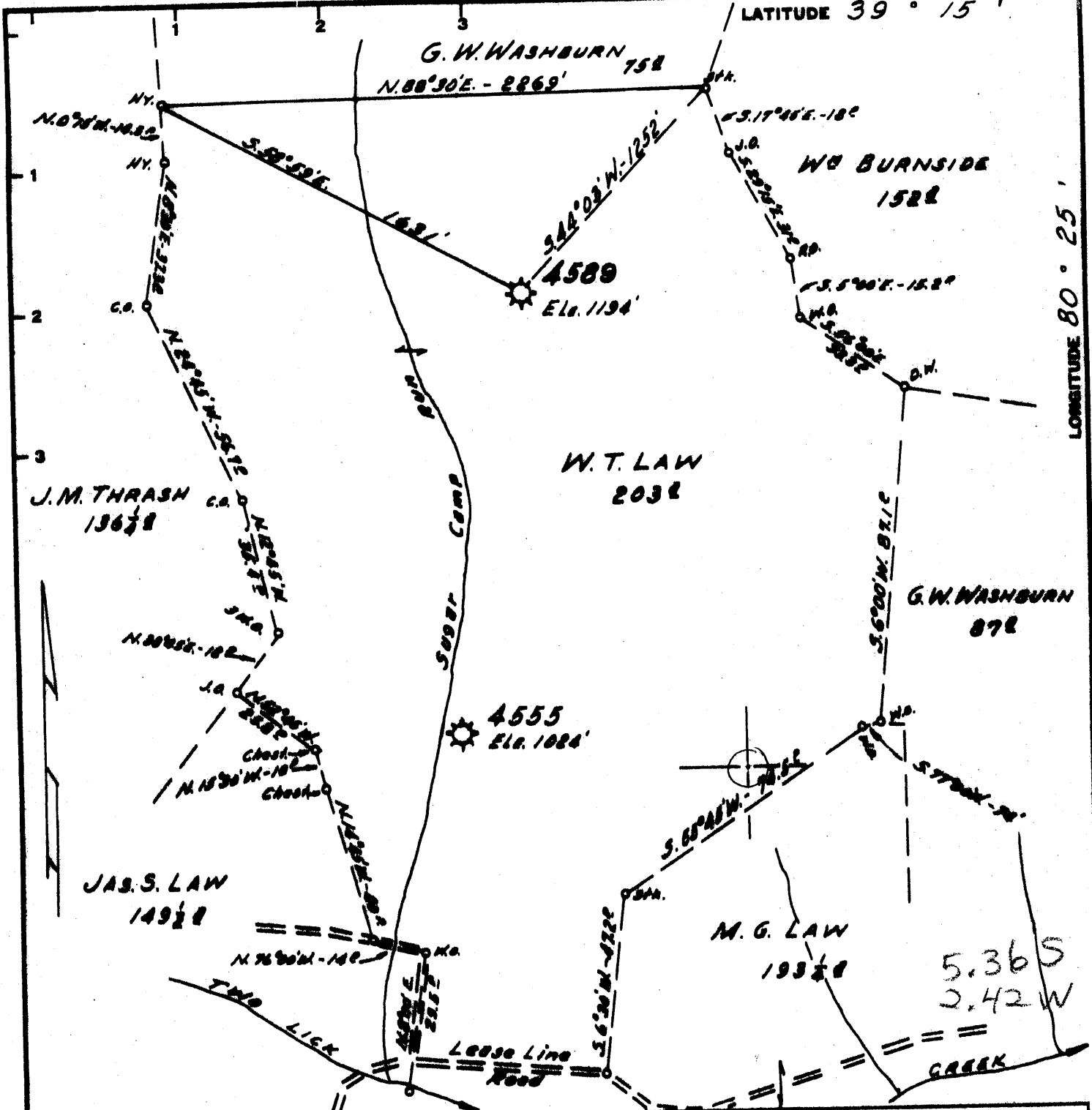


12,800'

LATITUDE 39° 15'

LONGITUDE 80° 25'

28,700'



Minimum Error of Closure 1' IN 200'
 Source of Elevation CONSOLIDATED GAS SUPPLY CORP WELL # 1877
Elev. 987'
 "I, the undersigned, hereby certify that this map is correct to the best of my knowledge and belief and shows all the information required by paragraph 6 of the rules and regulations of the oil and gas section of the mining laws of West Virginia."

New Location
 Drill Deeper
 Abandonment *Drilled*

Aug. 4, 1967 MAPSHT. 58, S20E8, F.B. 537 P. 6-8

Company CONSOLIDATED GAS SUPPLY CORP
 Address CLARKSBURG, W. VA.
 Farm W. T. LAW
 Tract Acres 203 Lease No. 27183
 Well (Farm) No. 4589 Serial No. 4589
 Elevation (Spirit Level) 1194'
 Quadrangle WESTON-N.W.
 County HARRISON District UNION
 Engineer Jackson M. Jarvis
 Engineer's Registration No. 2397
 File No. _____ Drawing No. _____
 Date AUG 4 1966 Scale 1" = 600'

STATE OF WEST VIRGINIA
 DEPARTMENT OF MINES
 OIL AND GAS DIVISION
 CHARLESTON

WELL LOCATION MAP
 FILE NO. HAR-1843-A

+ Denotes location of well on United States Topographic Maps, scale 1 to 62,500, latitude and longitude lines being represented by border lines as shown.
 - Denotes one inch spaces on border line of original tracing.