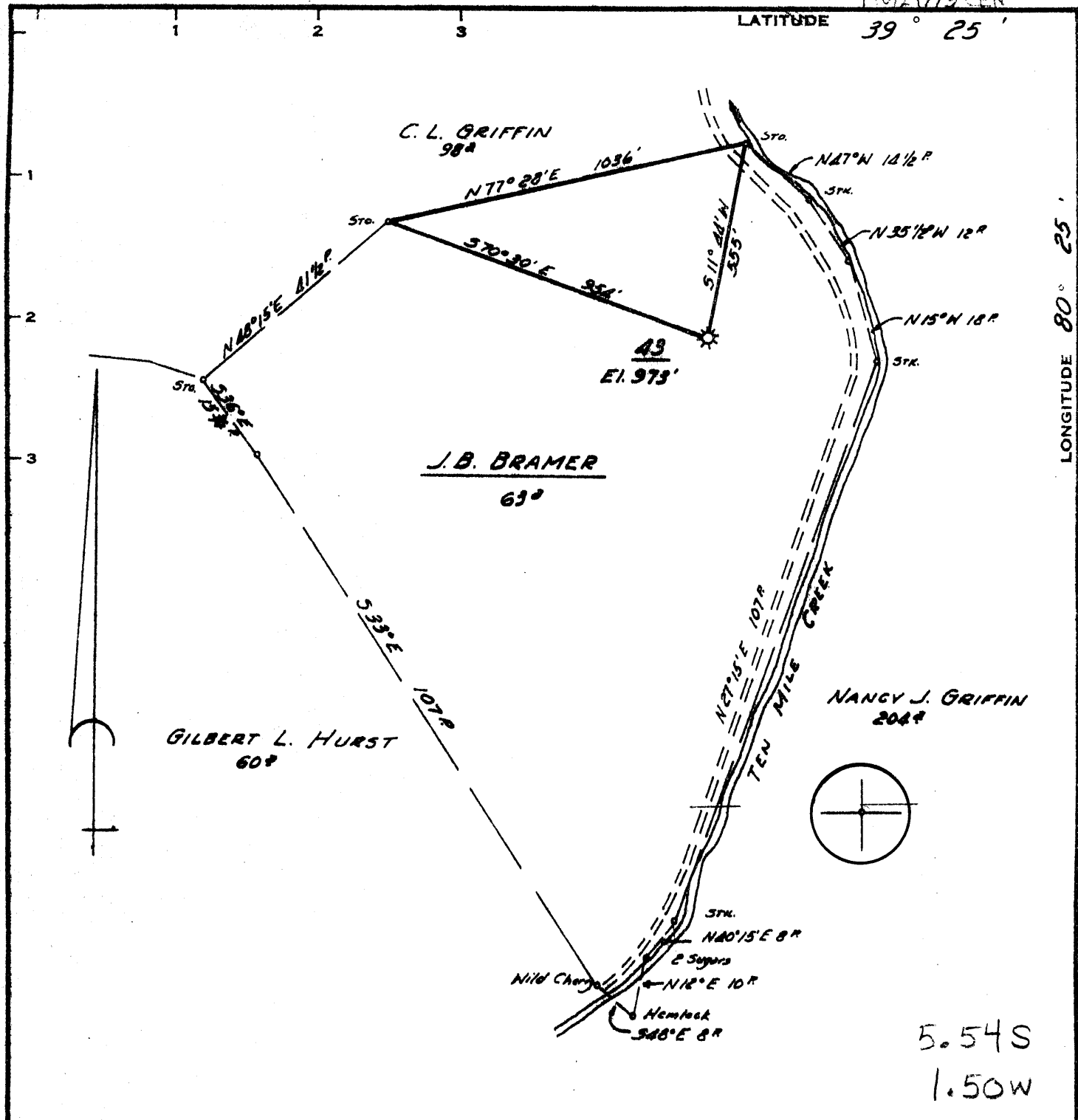


8900  
10/21/73 CEN

LATITUDE 39° 25'

LONGITUDE 80° 25'  
29,500'



5.54 S  
1.50 W

Minimum Error of Closure 1" IN 200'  
 Source of Elevation CONSOLIDATED GAS SUPPLY CORP  
WELL N° 1070 ELEV. 983'  
 "I, the undersigned, hereby certify that this map is correct to the best of my knowledge and belief and shows all the information required by paragraph 6 of the rules and regulations of the oil and gas section of the mining laws of West Virginia."

- ~~PROPOSED~~
- New Location
- Drill Deeper
- Abandonment

MADE 10-26-73 MAP SHEET 44-59 E9 FB 517 Pg. 17

Company CONSOLIDATED GAS SUPPLY CORP  
 Address CLARKSBURG W.VA.  
 Farm J.B. BRAMER  
 Tract \_\_\_\_\_ Acres 63 Lease No. 2965  
 Well (Farm) No. \_\_\_\_\_ Serial No. 43  
 Elevation (Spirit Level) 973'  
 Quadrangle CLARKSBURG WC  
 County HARRISON District SARDIS  
 Engineer Jackson M. Jarvis  
 Engineer's Registration No. 2397  
 File No. \_\_\_\_\_ Drawing No. \_\_\_\_\_  
 Date 10-4-73 Scale 1" = 400'

STATE OF WEST VIRGINIA  
 DEPARTMENT OF MINES  
 OIL AND GAS DIVISION  
 CHARLESTON

**WELL LOCATION MAP**  
 FILE NO. 47-1932-A

+ Denotes location of well on United States Topographic Maps, scale 1 to 62,500, latitude and longitude lines being represented by border lines as shown.  
 — Denotes one inch spaces on border line of original tracing.

**47-033**