

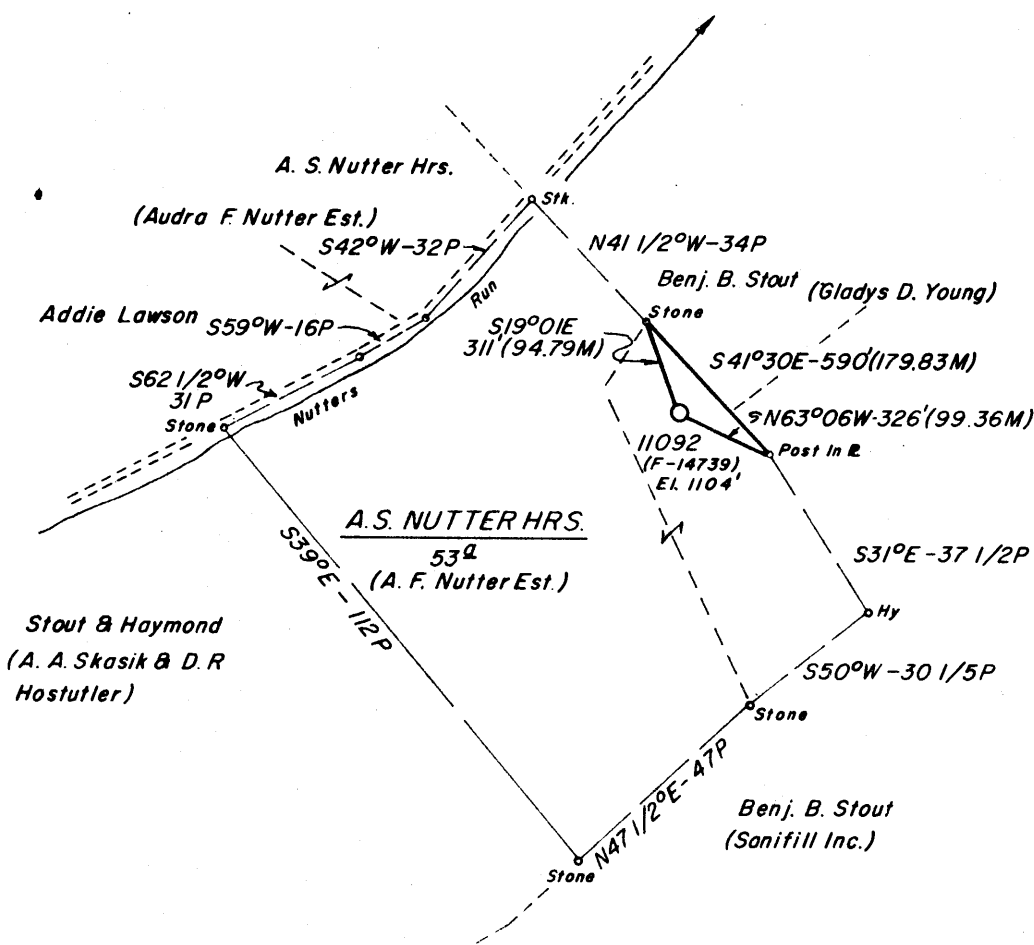
11,050'
(3368.04M)

LATITUDE 39° 15'



1125'
(342.9M)

LONGITUDE 80° 17' 30" (15')



0.20S
4.30W

Minimum Error of Closure 1' in 200'
 Source of Elevation B.M. - Consolidated Gas Supply Corporation Well No. 11419
 Elevation 1098'
 "I, the undersigned, hereby certify that this map is correct to the best of my knowledge and belief and shows all the information required by paragraph 6 of the rules and regulations of the oil and gas section of the mining laws of West Virginia."

New Location
 Drill Deeper
 Abandonment

3/11/76
Map Sheet 43 S-15 E-15

F.B. 1724 Pg. 31-32

Company Consolidated Gas Supply Corporation
 Address 445 W. Main St., Clarksburg, W. Va.
 Farm A.S. Nutter Hrs.
 Tract _____ Acres 53 Lease No. 77936
 Well (Farm) No. _____ Serial No. 11092
 Elevation (Spirit Level) 1104' NE
 Quadrangle Mount Clare 7 1/2', Weston 15'
 County Harrison District Clark
 Engineer Jackson M. Jarvis
 Engineer's Registration No. 2397
 File No. _____ Drawing No. _____
 Date June 12, 1975 Scale. 1" = 40 Poles

STATE OF WEST VIRGINIA
 DEPARTMENT OF MINES
 OIL AND GAS DIVISION
 CHARLESTON

WELL LOCATION MAP
 FILE NO. HAR-1976-A

— Denotes location of well on United States Topographic Maps, scale 1 to 24,000, latitude and longitude lines being represented by border lines as shown.

— Denotes one inch spaces on border line of original tracing.

47-033 MAR 22 1976