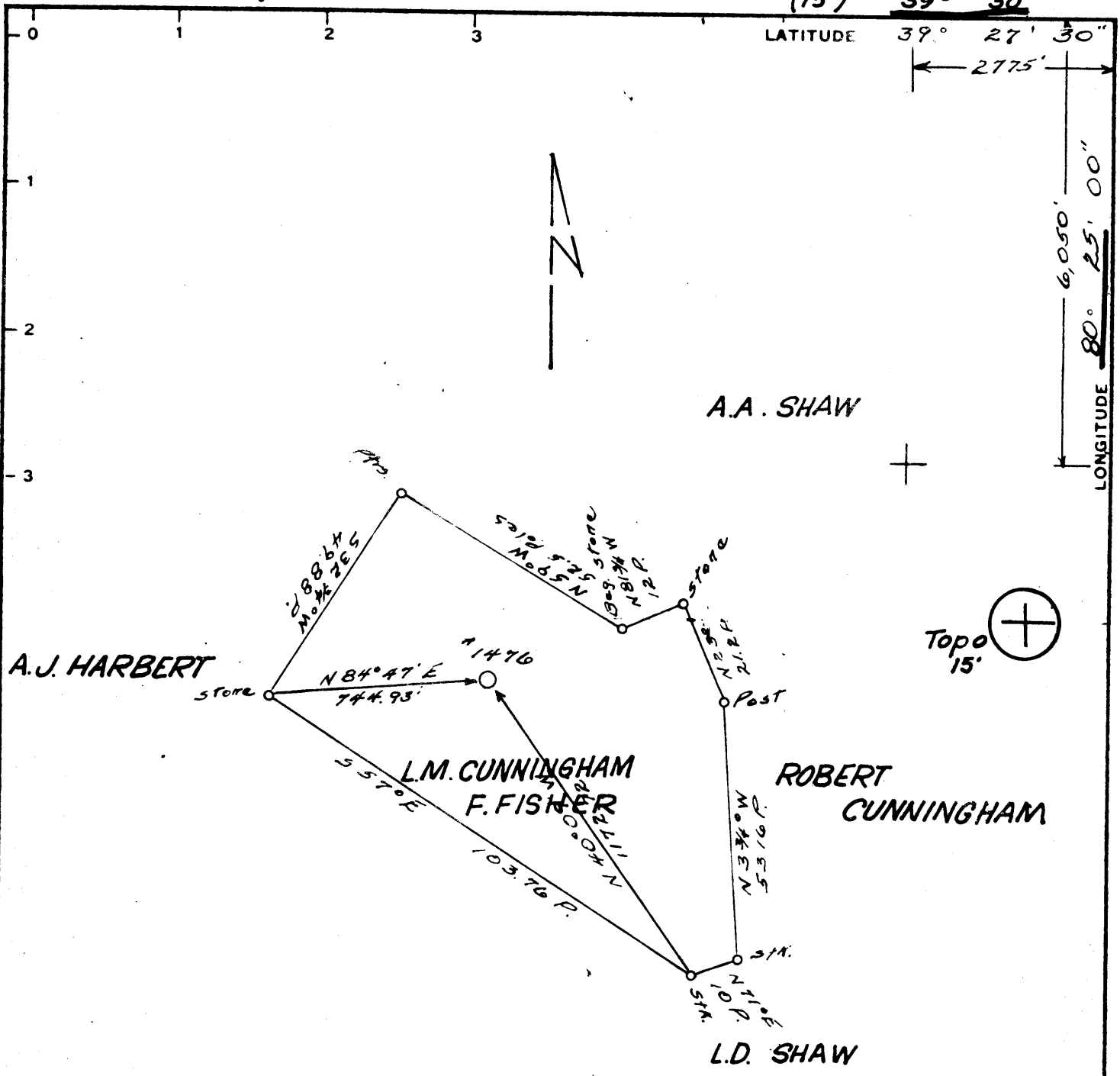


6,976 R



Minimum Error of Closure 1' in 200'

Source of Elevation Company survey stations tied into U.S.G.S. network

I, the undersigned, hereby certify that this map is correct to the best of my knowledge and belief and shows all the information required by paragraph 6 of the rules and regulations of the oil and gas section of the mining laws of West Virginia.

- Fracture
- New Location
- Drill Deeper
- Abandonment  Replug 6/10/76

Signed: \_\_\_\_\_  
Squares: N S E W

4.035  
0.56W

Company	Fairmont Operations Consolidation Coal Company		
Address	P. O. Box 1632 Fairmont, West Virginia 26554		
Farm	L. M. Cunningham (now Francis Fisher)		
Tract	Acres 32	Lease No.	
Well (Farm) No.	1476	Serial No.	
Elevation (Spirit Level)	1267.4	NW	
Quadrangle	Wallace 7-1/2'	Clarksburg 15'	
County	Harrison	District Eagle	
Engineer	_____		
Engineer's Registration No.	2901		
File No.	Drawing No.		
Date	6/7/76	Scale 1" = 500'	

STATE OF WEST VIRGINIA  
DEPARTMENT OF MINES  
OIL AND GAS DIVISION  
CHARLESTON

WELL LOCATION MAP

FILE NO. HAR-1984-A

+ Denotes location of well on United States Topographic Maps, scale 1 to 62,500, latitude and longitude lines being represented by border lines as shown.

JUN 18 1976

- Denotes one inch spaces on border line of original tracing.

47-033