

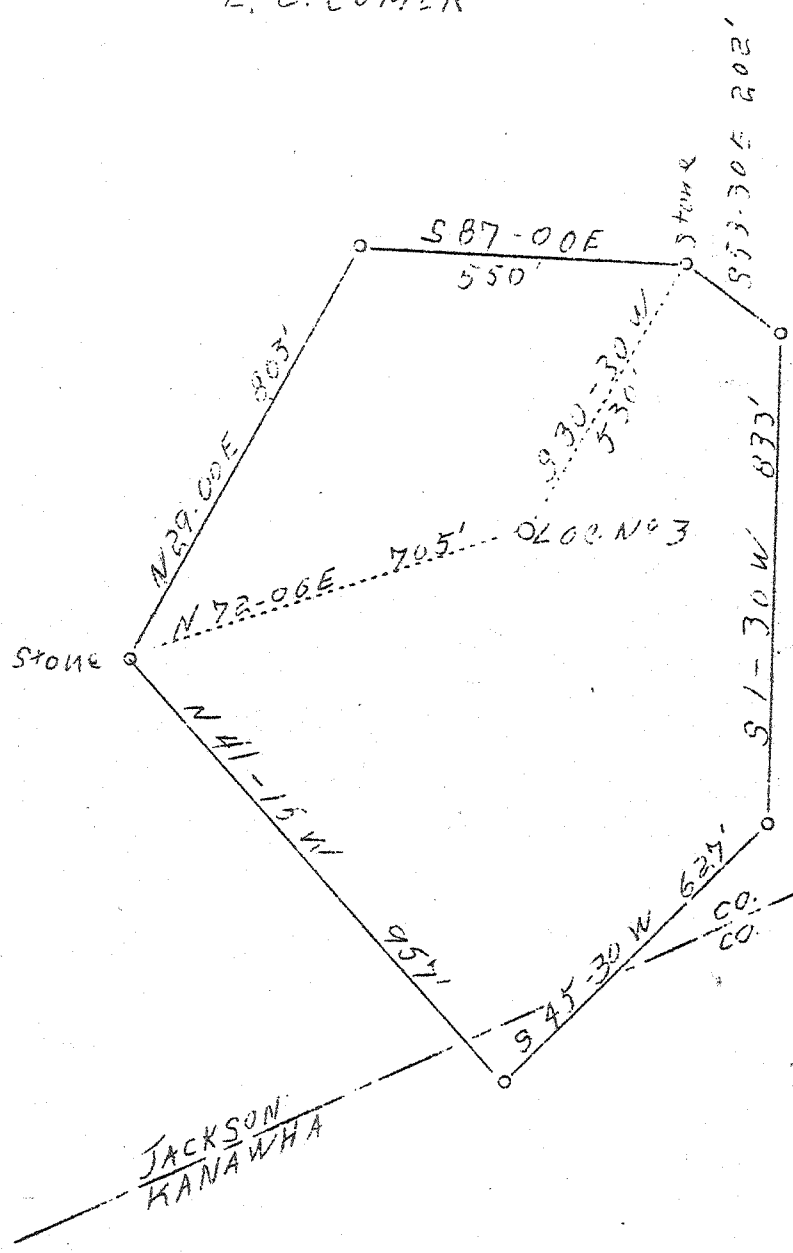
LATITUDE 38° 35'

LONGITUDE 81° 30'

E. C. COMER

JOHN SMITH

MONROE JONES



0.35-S
04-S
4.43W

Company	United Carbon Co.
Address	Charleston, W.Va.
Farm	Elizabeth Ward Perkins et al
Tract	Acres 24.25 Lease No. 2428
Well (Farm) No.	3 Serial No. 741
Elevation (Spirit Level)	945'
Quadrangle	Kenna S.F.
County	Jackson District Washington
Engineer	C.B. Wilson
Engineer's Registration No.	494
File No.	Drawing No.
Date	April 6, 1938 Scale 1"=360'

STATE OF WEST VIRGINIA
 Department of Mines
 OIL AND GAS DIVISION
 CHARLESTON

WELL LOCATION MAP
 File No. Jac-36-D

Denotes location of well on United States Topographic Maps, scale 1 to 62,500, latitude and longitude lines being represented by border lines as shown.

Denotes one inch spaces on border line of original tracing.

66-692

WEST VIRGINIA DEPARTMENT OF MINES

OIL & GAS DIVISION

WELL RECORD

Permit No. Jac-36

Kenna Quad.

Gas Well

CASING & TUBING

Company	United Carbon Co.	13	202-3	202-3
Address	901 Union Bldg., Charleston, W. Va.	10	936	936
Farm	Monroe Jones ACRES 24.250	8-1/4	2032	2032
Location	Middle Fork, Poca River	6-5/8	5123	5123
Well No.	3-741 ELEV. 948.5	2" tbg.	5281	5281
District	Washington County Jackson	CASING CEMENTED		
Surface	Monroe Jones	Size	feet	Date
Mineral	Bruin Heirs, New York City	8-5/8	640	6/26/38
Drilling commenced	May 2, 1938	6-5/8	250	8/ 7/38
Drilling completed	Aug. 22, 1938			
Date shot	Not shot			
Open Flow	12/10ths Merc. in 6-5/8" O.D.			
Volume	5,329,000 c. f.			
Rock Pressure	1800 lbs. 24 hrs.			
Salt Water	1480'			
Fresh Water	None			

Formation Color ^{Hay} TOP Base Result Formation Color ^{Hay} TOP Base Result

Clay		0	50				
Red Rock		50	75				
Slate	white	75	125				
Red Rock		125	150				
Slate-shells		150	178	Water	850	Hole full	
Red Rock		178	190	"	1540	Hole full	
Slate-shells		190	210	Oil	5206	show	
Red Rock		210	260	Gas	4075	show	
Slate-shells		260	360	"	5157	show	
Sand		360	430	"	5231	show	
Slate-shells		430	455	"	40/10 W	6-5/8"	5232'
Red Rock		455	465	"	10/10 M	"	5234
Slate-shells		465	480	"	17/10 M	"	5235
Red Rock		480	570	"	25/10 M	"	5236
Lime		570	585	"	20/10 M	"	5238
Red Rock		585	790	"	23/10 M	"	5240
Slate-shells		790	820	"	20/10 M	"	5242
Sand		820	948	"	16/10 M	"	5243
Slate		948	975	"	12/10 M	"	5245
Sand		975	1025	"	12/10 M	"	5253
Slate		1025	1030	"	12/10 M	"	5264
Sand		1030	1065	"	12/10 M	Final test.	
Slate		1065	1105				
Sand		1105	1185				
Slate		1185	1210				
Sand		1210	1274				
Slate		1274	1300				
Lime		1300	1320				
Slate		1320	1395				
Salt Sand		1395	1795				
Little Lime		1795	1823				
Big Lime		1823	1984	5102	5230	5264	
Big Injun Sand		1984	2024	949	949	949	
Slate-shells		2024	3650				
Shale-brown		3650	3700	4153	4281	4315	
Slate-shells		3700	4100				
Shale Brown		4100	4285				
Slate white		4285	4745				
Shale brown		4745	4785				
Slate white		4785	4825				
Shale brown		4825	5010				
Slate white		5010	5030				
Shale black	455	5030	5102				
Corniferous Lime	463	5102	5230				
Oriskany Sand		5230	5264				
Lime black		5264	5272				
Total Depth			5272				

485