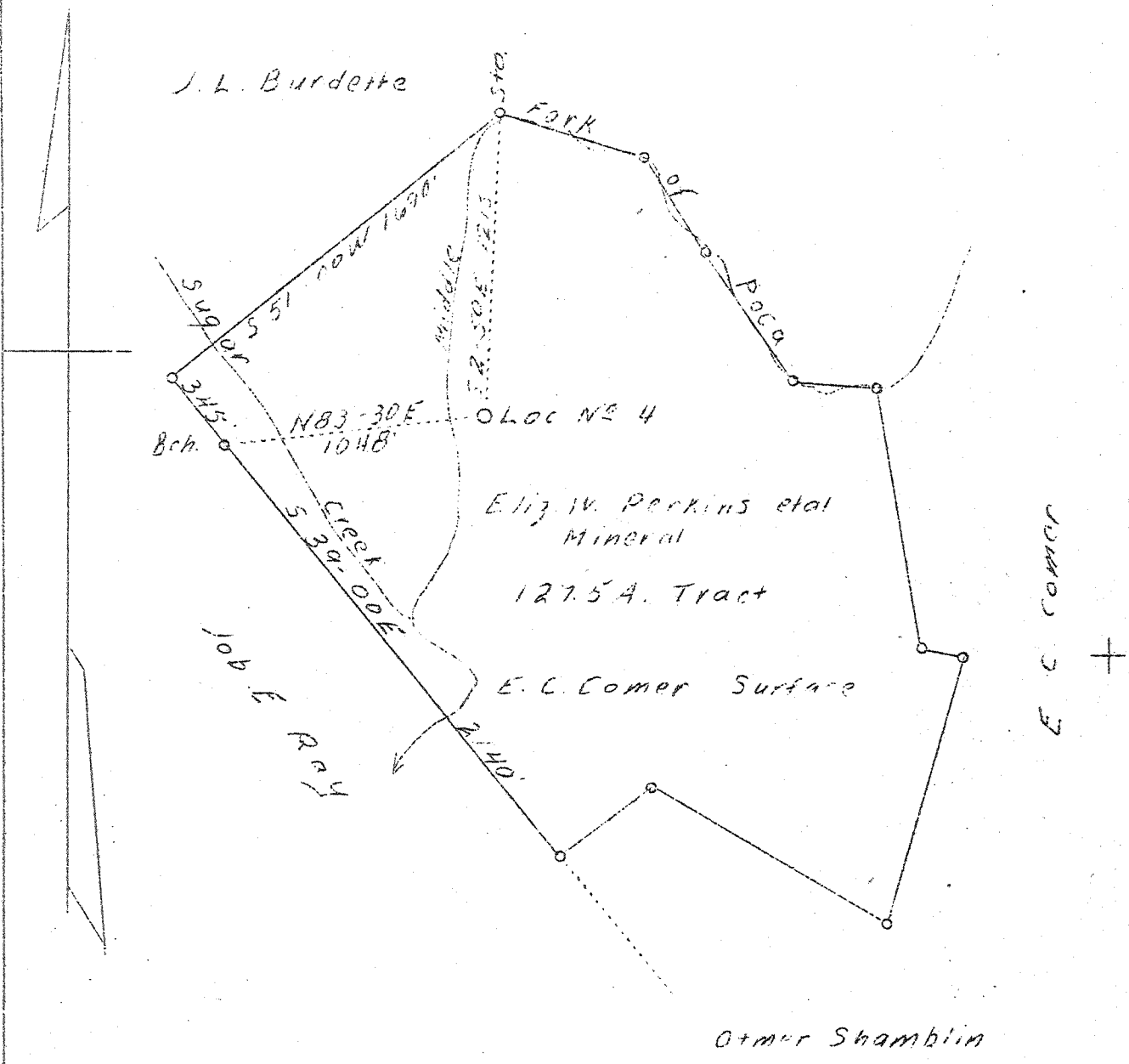


LATITUDE 38° 40'

LONGITUDE 81° 33'



Permit issued: 3-3-39.

0.49-W
~~15-W~~
5.52 S

New location

Company	United Carbon Company	STATE OF WEST VIRGINIA. Department of Mines OIL & GAS DIVISION Charleston WELL LOCATION MAP File No. <u>Jac-44</u> x Denotes location of well on U. S. Topographic Maps, scale 1 to 62,500, latitude and longitude lines being represented by border lines as shown. - Denotes one inch spaces on border line of original tracing.
Address	Charleston, W. Va.	
Farm	Elizabeth W. Perkins etal	
Acres	127.5	
Lease No.	2428	
Well (Farm) No.	4	
Serial No.	774	
Elevation (SL)	664.6	
Quadrangle	Kenna	
County	Jackson	
District	Washington	
Engineer	C. B. Wilson	
Eng. Reg. No.	494	
Date	Feb. 20, 1939	
Scale	1" = 660'	

6-6-192 Deep well

WEST VIRGINIA DEPARTMENT OF MINES

OIL & GAS DIVISION

WELL RECORD

Permit No. Jac-44

Gas Well

Kenna Quad.

CASING & TUBING

Company	United Carbon Company	13	117	117
Address	Union Bldg., Charleston, W.Va.	10	685	685
Farm	E. C. Comer ACRES 127.5	8-1/4	1797	1797
Location	Middle For, Poca River	7	4866	4866
Well No.	4- 774 (E.W.Perkins #4) ELEV. 673.4	2		4995
District	Washington - Jackson County			
Surface	E. C. Comer, Advent, W. Va.	CASING CEMENTED:		
Mineral	E. W. Perkins & J. H. Nash	Size	Feet	Date
	710 Kanawha St. Charleston, W. Va.	8-5/8	616	5/13/39
Commenced	March 27, 1939	7	275	6/23/39
Completed	July 7, 1939			
Date shot	7/7/39 - Depth 4980-5004	Fresh Water 70		
Open Flow	18/10ths Merc. in 7" 24# csg.	Salt Water 1245-1260		
Volume	6,625,000 c.f.			
Rock Pressure	1750 lbs. 24 hrs.			

Formation	Color	Top	Base	Result	Formation	Color	Top	Base	Result
Soil		0	8		Corniferous	Lime	4851	4976	
Sand		8	45		Oriskany		4976	5010	
Slate & Shells		45	85	W 70	Lime		5010	5014	
Red Rock		85	100	b blr hr	Total Depth			5014	
Slate		100	170						
Sand		170	210						
Red Rock		210	215						
Slate		215	225						
Red Rock		225	265						
Slate		265	280						
Red Rock		280	350						
Slate&Shells		350	425						
Red Rock		425	460						
Lime		460	515						
Slate & Shells		515	600						
Sand		600	675						
Slate		675	885						
Sand		885	905						
Slate		905	915						
Sand		915	940						
Slate		940	965						
Sand		965	1000						
Slate		1000	1015						
Sand		1015	1070						
Black Slate		1070	1158						
Sand		1158	1173						
White Slate		1173	1190						
Broken Lime		1190	1235						
Salt Sand		1235	1425	W 1245					
White Slate		1425	1430	2 blr hr					
Maxon Sand		1430	1565	W 1260 HF					
Little Lime		1565	1588						
Slate - P. Cove		1588	1590						
Big Lime		1590	1735						
Injun Sand		1735	1785						
Slate & Shells		1785	3417						
Brown Shale - AAA		3417	3465						
Slate&Shells		3465	3710						
Brown Shale		3710	3735						
White Slate		3735	3870						
Brown Shale		3870	3985						
Slate & Shells		3985	4500						
Brown Shale		4500	4535						
White Slate		4535	4570						
Brown Shale		4570	4750						
White Slate		4750	4770						
Black Shale		4770	4851	Steel Line					