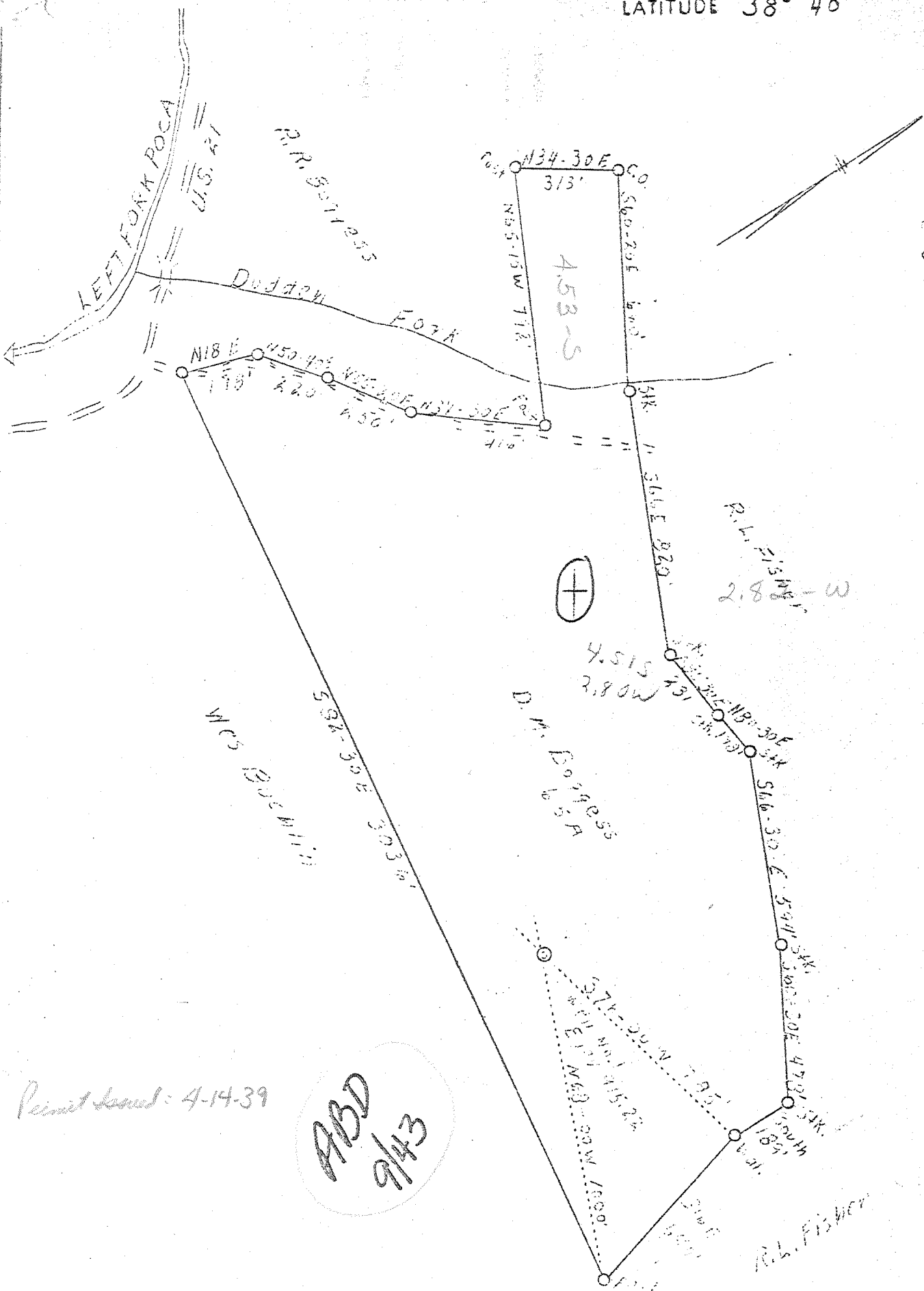


LATITUDE 38° 40'

LONGITUDE 81° 35'



Permit Issued: 4-14-39

ABD
9/43

Company	Everett Starcher et al
Address	Spencer, W.Va.
Farm	D.M. Boggess
Tract	25
Acres	
Well (Farm) No.	1
Elevation (SL)	915.22
Quadrangle	Kenna
County	Jackson
District	Ripley
Engineer	L.F. Dye
Engineer's Reg.	#804
Gate	March 31, 1939
Scale	1" = 400'

STATE OF WEST VIRGINIA
Department of Mines
OIL AND GAS DIVISION
CHARLESTON

WELL LOCATION MAP

File No. 100-45

x Denotes location of well on United States Topographic Maps, scale 1 to 62,500, latitude and longitude lines being represented by border lines as shown.
-Denotes one inch spaces on border line of original tracing.

6-6-1922 Deep ✓

WEST VIRGINIA DEPARTMENT OF MINES

OIL & GAS DIVISION

WELL RECORD

Gas Well

Permit No. Jas-45

CASING & TUBING

Kenna Quad.

Company Everett Starcher, et al
 Address Spencer, W. Va.
 Farm D. M. Boggess ACRES 65
 Location Duddens Fork
 Well No. One Elev. 915.22
 District Ripley - Jackson County
 Surface & Mineral D. M. Boggess, Kenna, W. Va.
 Commenced Apr. 22, 1939
 Completed July 16, 1939
 Date shot 7/18/39 - Depth 5257
 Open Flow 28/10ths Merc. in 5-1/2"
 Volume 6,750,000 c.f.
 Rock Pressure 1800 lbs. hrs.
 Fresh Water -
 Salt Water 1100

13 31
 10 843
 8-1/4 2136
 5-3/16 5137
 5-1/2 Casing cemented

Formation Color		MAR 5 TOP BASE RESULT		Formation Color		MAR 5 TOP BASE RESULT	
White Slate		29	40	Lime		2164	2258
Sand		40	87	Slate		2258	2516
White Slate		87	100	Shale - <i>Coffin</i>		2516	2527
Red Rock		100	147	Berea Grit		2527	2540
Sand		147	168	Slate Shells		2540	3752
Red Rock		168	284	Brown Shale - <i>441</i>		3752	3817
Blue Lime		284	292	Slate Shells		3817	4026
Red Rock		292	334	Brown Shale		4026	4086
White Slate		334	354	Slate Shells		4086	4116
Red Rock		354	372	Shale		4116	4367
Slate		372	487	White Slate		4367	4752
Sand		487	531	Brown Shale		4752	5058
Slate		531	540	Black Shale		5058	5111
Red Rock		540	567	Corniferous Lime - <i>443</i>		5111	5227
Slate		567	582	Oriskany Sand		5227	5268
Red Rock		582	590				
Lime		590	616				
Red Rock		616	682				
Slate		682	700				
Red Rock		700	716				
Slate		716	750				
Lime		807	840				
Sand		840	856				
Slate		856	934				
Sand		934	1008				
Slate		1008	1094				
Sand		1094	1140				
Sand		1162	1206				
Slate		1206	1267				
Sand		1267	1298				
Slate		1298	1313				
Sand		1313	1360				
Slate		1360	1497				
Sand		1497	1512				
Slate		1512	1562				
Sand		1562	1830				
Slate		1830	1843				
Maxon Sand		1843	1883				
Little Lime		1883	1898				
Slate - <i>P. Cave</i>		1898	1905				
Big Lime		1905	2047				
Injun Sand		2047	2091				
Slate		2091	2096				
Squaw Sand		2096	2139				
Slate		2130	2134				
Lime		2134	2246				
Slate		2146	2164				

Shot 5230 to 5257 with 27 ots.

T.D.

ATS