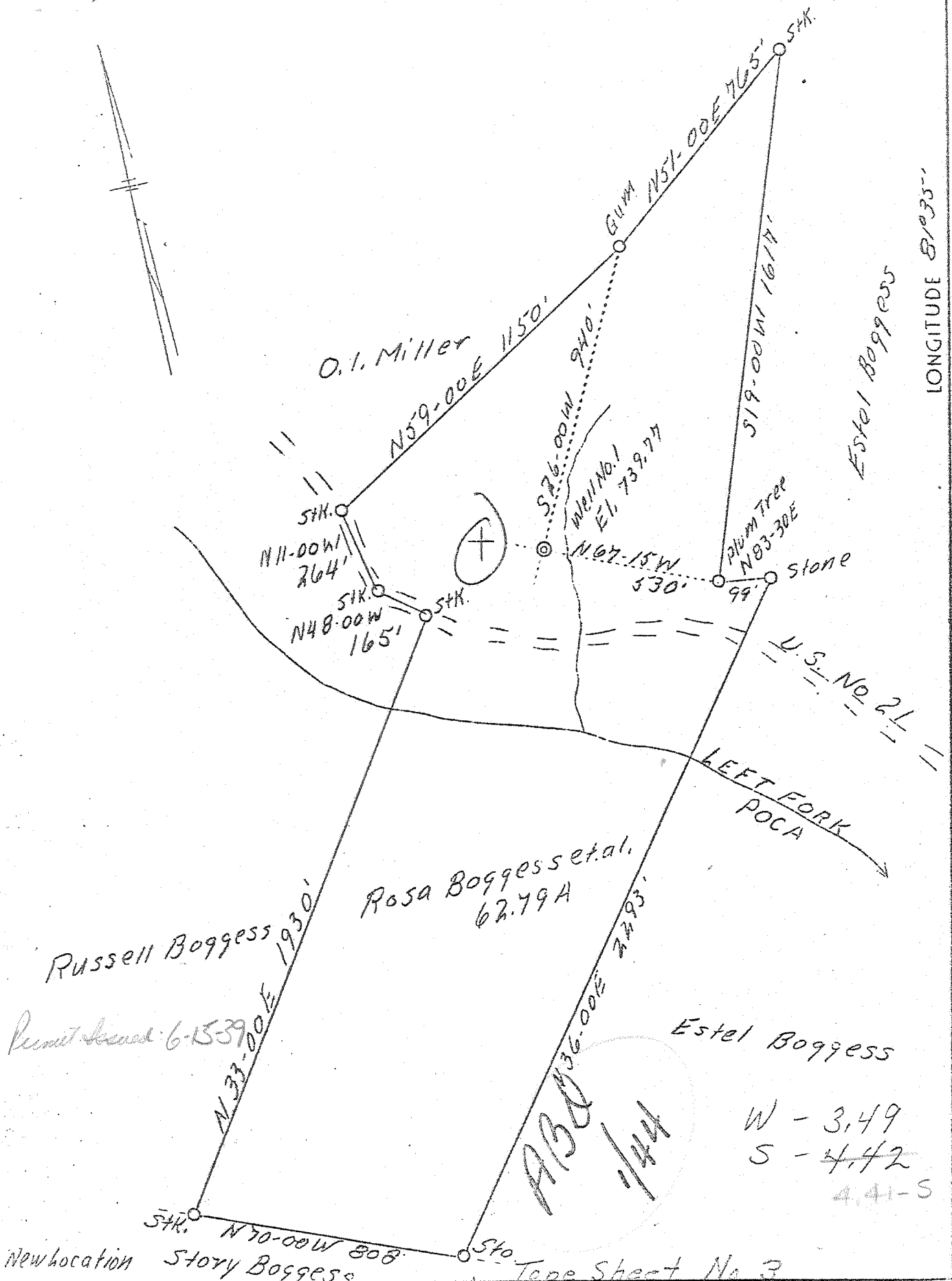


LATITUDE 38° 40'

LONGITUDE 81° 35'



Company Everett Starcher, et al
 Address Spencer, W. Va.
 Farm Rosa Boggess, et al
 Acres 62.79
 Well (Farm) No. 1
 Elevation (SL) 739.77
 Quadrangle Kenna
 County Jackson
 District Ripley
 Engineer L. F. Dye
 Eng. Reg. No. 804
 Date June 1, 1939
 Scale 1" = 400

STATE OF WEST VIRGINIA
 Department of Mines
 OIL & GAS DIVISION
 Charleston

WELL LOCATION MAP

File No. 1AC-48

x Denotes location of well on U. S. Topographic Maps, scale 1 to 62,500, latitude and longitude lines being represented by border lines as shown.

- Denotes one inch spaces on border line of original tracing.

Deep

✓

WEST VIRGINIA DEPARTMENT OF MINES

OIL & GAS DIVISION

WELL RECORD

Permit No. Jac-48

Gas Well

Kenna Quad.

CASING & TUBING

Company	Everett Starcher, et al	16	19	19
Address	Spender, W. Va.	13	58	
Farm	Rosa Bogness Gdn. ACRES 60	10	649	
Location	Poca	3-1/4	1847	1847
Well No.	1 ELEV. 658	5-3/16	4846	4846
District	Rinley - Jackson County			
Surface & Mineral	Rosa Bogness, et al, Kenna, W. Va.			
Commenced	June 14, 1939			
Completed	Sept. 11, 1939			
Shot	9/11/39 - Depth 4972			
Open Flow	60/10ths Merc. in 5-1/2			
Volume	8,500,000 c.f.			
Rock Pressure	1850 lbs. 24 hrs.			
Salt Water	1370			

Formation	Color	Hor	TOP	Base	Result	Formation	Color	Hor	TOP	Base	Result
Surface				10		Slate			1671	1674	
Sand			10	25		Big Lime			1674	1780	
Slate			25	50		Big Injun			1780	1820	
Red Rock			50	58		Slate			1820	1830	
Lime			58	65		Sand-Squand			1830	1840	
White Slate			65	120		Slate			1840	1848	
Sand			120	130		Gritty Lime			1848	1862	
Slate			130	160		Slate			1862	1870	
Red Rock			160	170		Lime Gritty			1870	1884	
Slate			170	195		Slate & Shells			1884	2255	
Red Rock			195	200		Berea Grit			2255	2262	
Lime			200	218		Slate & Shells			2262	3480	Show Gas 2230
Sand			218	230							
Slate			230	250		Brown Shale -AA1			3480	3520	
Sand			250	310		Slate & Shells			3520	3920	
White Slate			310	330		Brown Shale			3920	4060	
Red Rock			330	338		Slate & Shells			4060	4480	
Sand			338	365		Brown Shale			4480	4630	
Red Rock			365	420		Slate & Shells			4630	4700	
Lime			420	460		Brown Shale			4700	4790	
Red Rock			460	468		Black Shale -Marcellus			4790	4825	Gas 4944 to 4952
White Slate			468	475							
Lime			475	535		Corniferous Lime -A13			4825	4942	Gas 4967 to 4972
Pink Rock			535	545							
Blue Lime			545	570		Oriskany Sand			4942	4976	
Pink Rock			570	578							
Sand			578	592							
Slate			592	625							
Lime			625	635							
Sand			635	642							
Gritty Lime			642	690							
Sand			690	700							
Lime			700	710							
Sand			710	785							
Slate			785	800							
Black Slate			800	805							
Sand			805	815							
White Slate			815	850							
Sand			850	920							
Slate			920	935							
Slate			1060	1110							
Slate & Shells			1110	1140							
Sand			1140	1175							
Black Slate			1175	1275							
Sand			1275	1610							
Slate			1610	1640							
Sand			1640	1671							

TD
4976