

Latitude 38° 40'

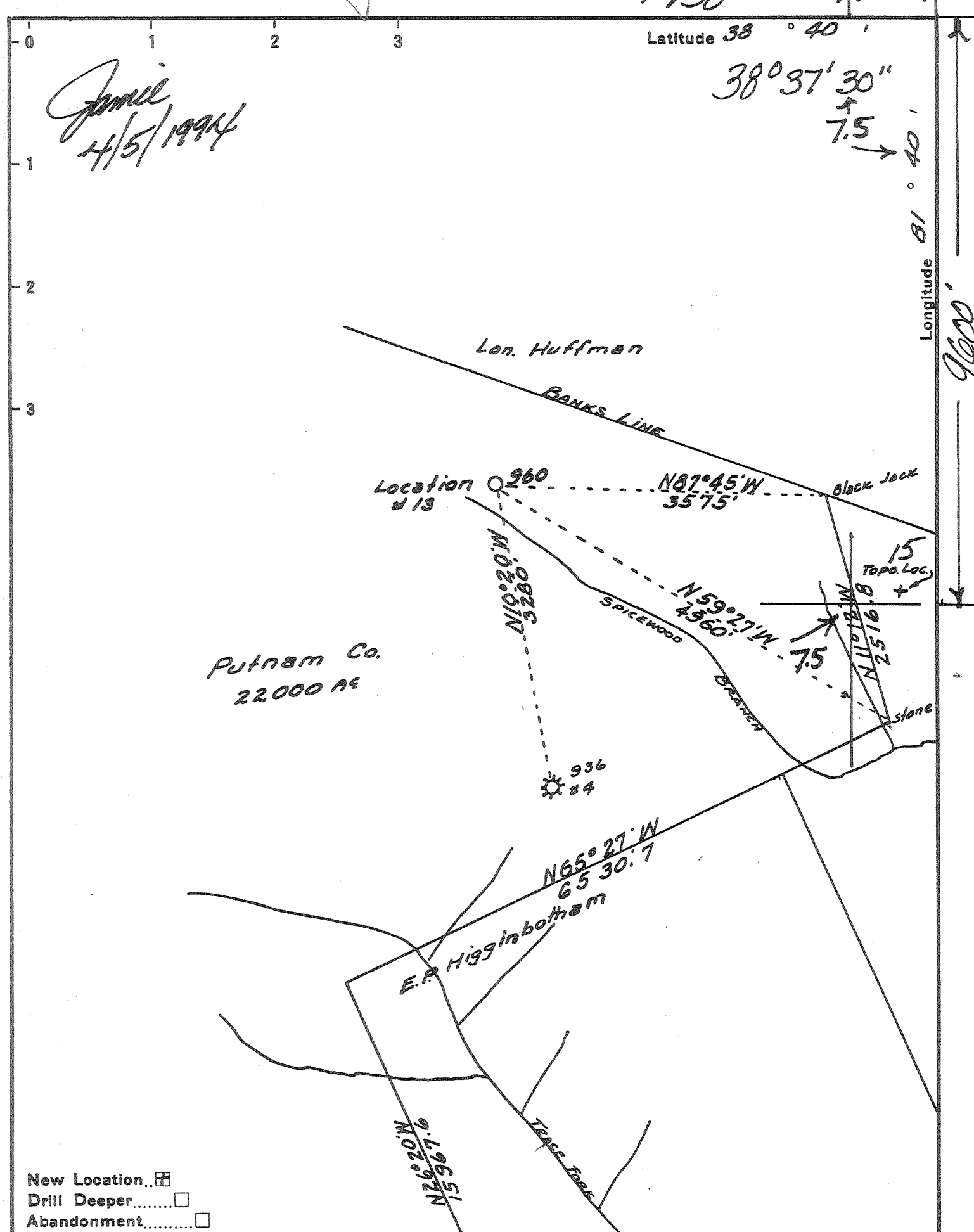
38° 37' 30"

7.5

Longitude 81° 40'

9000'

Jamil
4/5/1994



New Location

Drill Deeper

Abandonment

Company Cabot Oil & Gas

Address Cataraugus Center, Suite 200, Pittsburgh PA 15222

Farm THE PUTNAM COMPANY PA 15222

Tract Part of 22000 AC Acres 3-464 1011 Lease No. 3-464 1011

Well (Farm) No. 13 Serial No. 960

Elevation (Spirit Level) 904.96

Quadrangle KENNA 15 / Sissonville 7.5

County JACKSON District RIPLEY

Engineer Roy Boston

Engineer's Registration No. _____

File No. _____ Drawing No. _____

Date JULY 8, 1940 Scale 1" = 1320'

STATE OF WEST VIRGINIA
 Division of Environmental Protection
 Office of Oil & Gas
 Nitro, WV.

WELL LOCATION MAP
 O&G Well No. 47-035-00091-P

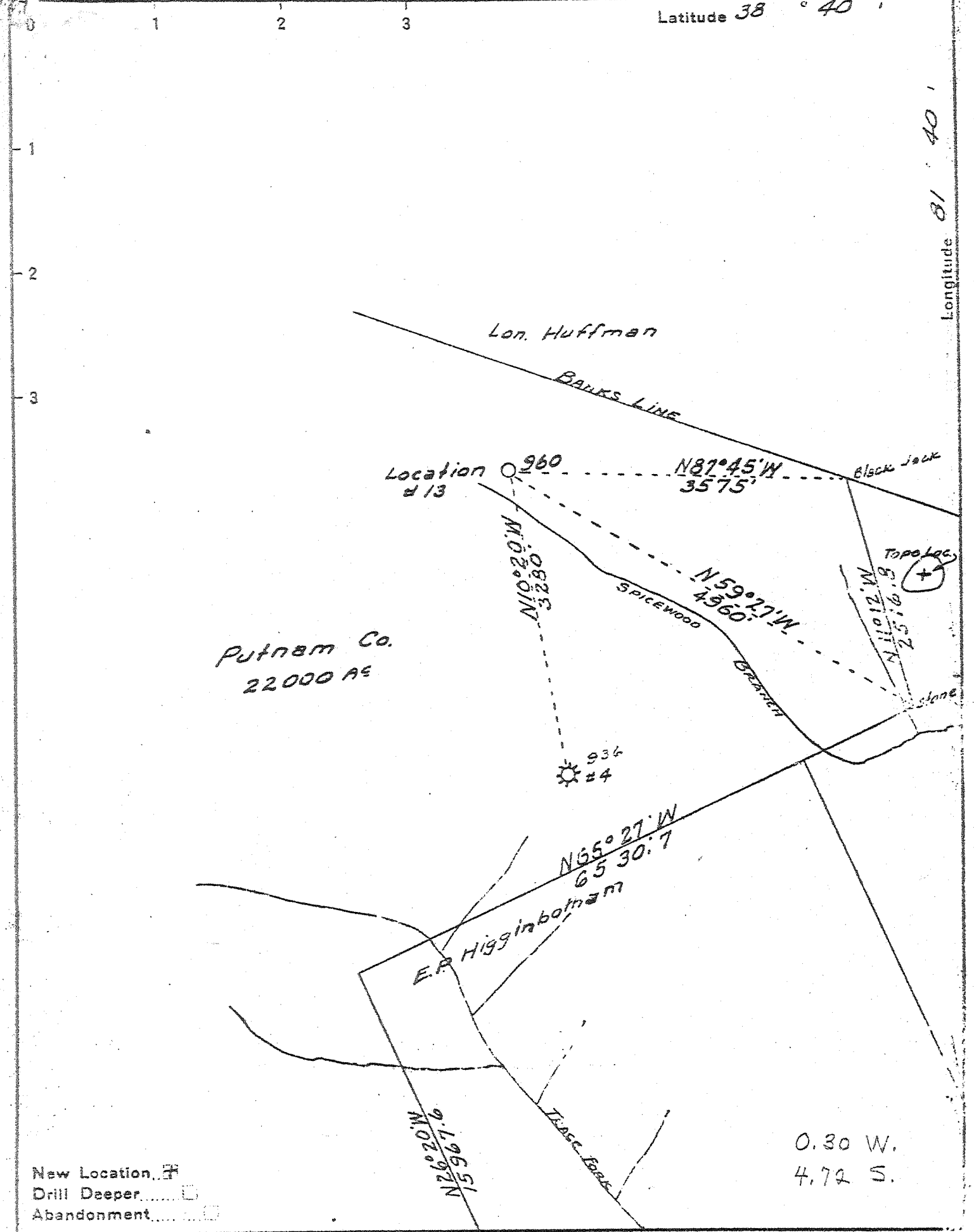
+ Denotes location of well on United States Topographic Maps, scale 1 to 62,500, latitude and longitude lines being represented by border lines as shown.

- Denotes one inch spaces on border line of original tracing.

APR 07 1994

Latitude 38 ° 40

Longitude 81 ° 40



New Location
 Drill Deeper
 Abandonment

Company GODFREY L. CABOT INC.
 Address 600 UNION BLDG. CHARLESTON WVA.
 Farm THE PUTNAM COMPANY
 Part of 22000 AC
 Tract _____ Acres _____ Lease No. 3-464
 Well (Farm) No. 13 Serial No. 960
 Elevation (Spirit Level) 904.96
 Quadrangle KENNA
 County JACKSON District RIPLEY
 Engineer Roy Boston
 Engineer's Registration No. _____
 File No. _____ Drawing No. _____
 Date JULY 8. 1940 Scale 1" = 1320'

STATE OF WEST VIRGINIA
 DEPARTMENT OF MINES
 OIL AND GAS DIVISION
 CHARLESTON

WELL LOCATION MAP
 FILE NO. JAC-91

+ Denotes location of well on United States Topographic Maps, scale 1 to 62,500, latitude and longitude lines being represented by border lines as shown.
 - Denotes one inch spaces on border line of original tracing.

WEST VIRGINIA DEPARTMENT OF MINES
OIL & GAS DIVISION
W E L L R E C O R D

Permit No. Jac-91
Kenna Quad.

Gas Well

Company Godfrey L. Cabot, Inc.,
Address Charleston, W. Va.
Farm Putnam Company ACRES -
Well No. 13 (Serial 960) ELEV. 904.96
District Ripley - Jackson County
Commenced July 27, 1940
Completed October 12, 1940
Surface & Mineral -
Date shot Not shot
Open Flow 60/10ths Merc. in 7"
Volume 12,874,000 c.f.
Rock Pressure 1725 lbs. 10 hrs. Oriskany
Water -

CASING & TUBING

10-3/4	876-4	876-4
8-5/8	2118	-
7	5030	5030
2-3/8		5127

How casing set:
10-3/4 - 10-3/4x12 Cas-
ing Shoe. Midget Bot-
tom hole Packer. 15
sacks Aquagel. 250#
Fibrotex
7 - B.H.Packer. 50 sacks
Aquagel.
2-3/8 - 1 - 2" Type C
Otic Casing Tool, 2"
collar & Bull Plug

Red Rock	0	45	Big Injun	2015	2061
Blue Slate	45	55	Slate & Shells	2061	2077
Green Sand	55	63	Lime - dark	2077	2128 SL 2118
Blue Slate	63	78	Slate&Shells	2128	2477
Red Rock	78	175	Brown Shale	2477	2495
Lime - dark	175	181	Berea Grit - gray	2495	2504 Sh. Gas
Blue Slate	181	187	Slate&Shells - white	2504	3703
Red Rock	187	217	Brown Shale - 441	3703	3757
Blue Slate	217	226	White Shale	3757	4053
Red Rock	226	270	Brown Shale	4053	4266
Slate&Shells	270	293	Dark Shale	4266	4706
Red Rock	293	330	Brown Shale	4706	4931
Sand	330	365	Black Shale <i>MARCELLUS</i>	4931	5007
Slate	365	410	Corniferous Lime - 463	5007	5113 SL 5030
Red Rock	410	457	Oriskany Sand	5113	5135 SL 5119
Lime - dark	457	500	Total Depth		5135
Red Rock	500	511			
Lime - light	511	531			
Red Rock	531	541			
Slate - white	541	564			
Sand	564	604			
Slate	604	622			
Red Rock	622	665			
Slate - dark	665	679			
Lime Shell	679	687			
Slate - light	687	709			
Lime	709	720			
Slate	720	737			
Lime - dark	737	767			
Slate&Shells	767	817			
Slate - white	817	877			
Lime - dark	877	897			
Sand - white	897	936			
Slate	936	968			
Slate - dark	968	992			
Lime	992	1010			
Slate&Shells	1010	1030			
White Shale	1030	1082			
Sand - white	1082	1152	SW 1143-1153		
			2 BPH		
Slate	1152	1189	Hollow filled		
Sand	1189	1250	up to 300'		
Slate - dark	1250	1275	of top		
Sand - white	1275	1298			
Slate	1298	1503			
Salt Sand	1503	1872			
Slate - dark	1872	1875			
Sand - dark	1875	1912			
Big Lime	1912	2015			

GAUGES IN ORISKANY SAND

5119	190 M
5123	3489 M
5125	7800 M
5134	12,874 M
5134	10,514 M
5143 1/2	10,514 M
5135	10,514 M
5135 (tools out)	10,000 M

475

STATE OF WEST VIRGINIA
DIVISION OF ENVIRONMENTAL PROTECTION
SECTION OF OIL AND GAS

MAR 06 1995

Permitting
Office of Oil & Gas

AFFIDAVIT OF PLUGGING AND FILLING WELL

AFFIDAVIT SHOULD BE IN TRIPLICATE, one copy mailed to the Division, one copy to be retained by the Well Operator and the third copy (and extra copies if required) should be mailed to each coal operator at their respective addresses.

Farm name: HARRISON, CHARLES Operator Well No.: PUTNAM CO. #13

LOCATION: Elevation: 904.96 Quadrangle: SISSONVILLE
District: RIPLEY County: JACKSON
Latitude: 9600 Feet South of 38 Deg. 37 Min. 30 Sec.
Longitude 1450 Feet West of 81 Deg. 40 Min. 0 Sec.

Well Type: OIL _____ GAS X

Company: Cabot Oil & Gas Corporation Coal Operator Frank Hardy et al
400 Fairway Drive, Suite 400 or Owner c/o One Valley Bank
Coraopolis, PA 15108 P.O. Box 1793

Agent: Dave McCluskey Coal Operator Charleston, wV 25301
or Owner _____

Permit Issued: 04/08/94

AFFIDAVIT

STATE OF WEST VIRGINIA,
County of Jackson SS:

Kevin Shreve and Bill Shreve being first duly sworn according to law depose and say that they are experienced in the work of plugging and filling oil and gas wells and were employed by the above named well operator, and participated in the work of plugging and filling the above well, and Glen Robinson Oil and Gas Inspector representing the Director, say that said work was commenced on the 17th day of October, 1994, and that the well was plugged and filled in the following manner:

TYPE	FROM	TO	PIPE REMOVED		LEFT
Cement	5110'	4810'	3½	5100'	None
6% Gel	4810'	3050'	7	3000'	2030'
Cement	3050'	2950'	10-3/4	0'	876'
6% Gel	2950'	2550'			
Cement	2550'	2450'			
6% Gel	2450'	1200'			
Cement	1200'	800'			
6% Gel	800'	100'			
Cement	100'	Surface			

[Handwritten signature] 8/7/95

Description of monument: 6" monument
and that the work of plugging and filling said well was completed on the 26th day of October, 1994.

And further deponents saith not. Kevin Shreve

Sworn and subscribe before me this 26th day of OCTOBER, 1994
My commission expires 17, 1996

Notary Public
Cynthia M. Bowles
Charlers Twp., Washington County
My Commission Expires June 17, 1996
Member, Pennsylvania Association of Notaries

Bill Shreve
Cynthia M. Bowles
Notary Public

Oil and Gas Inspector: _____