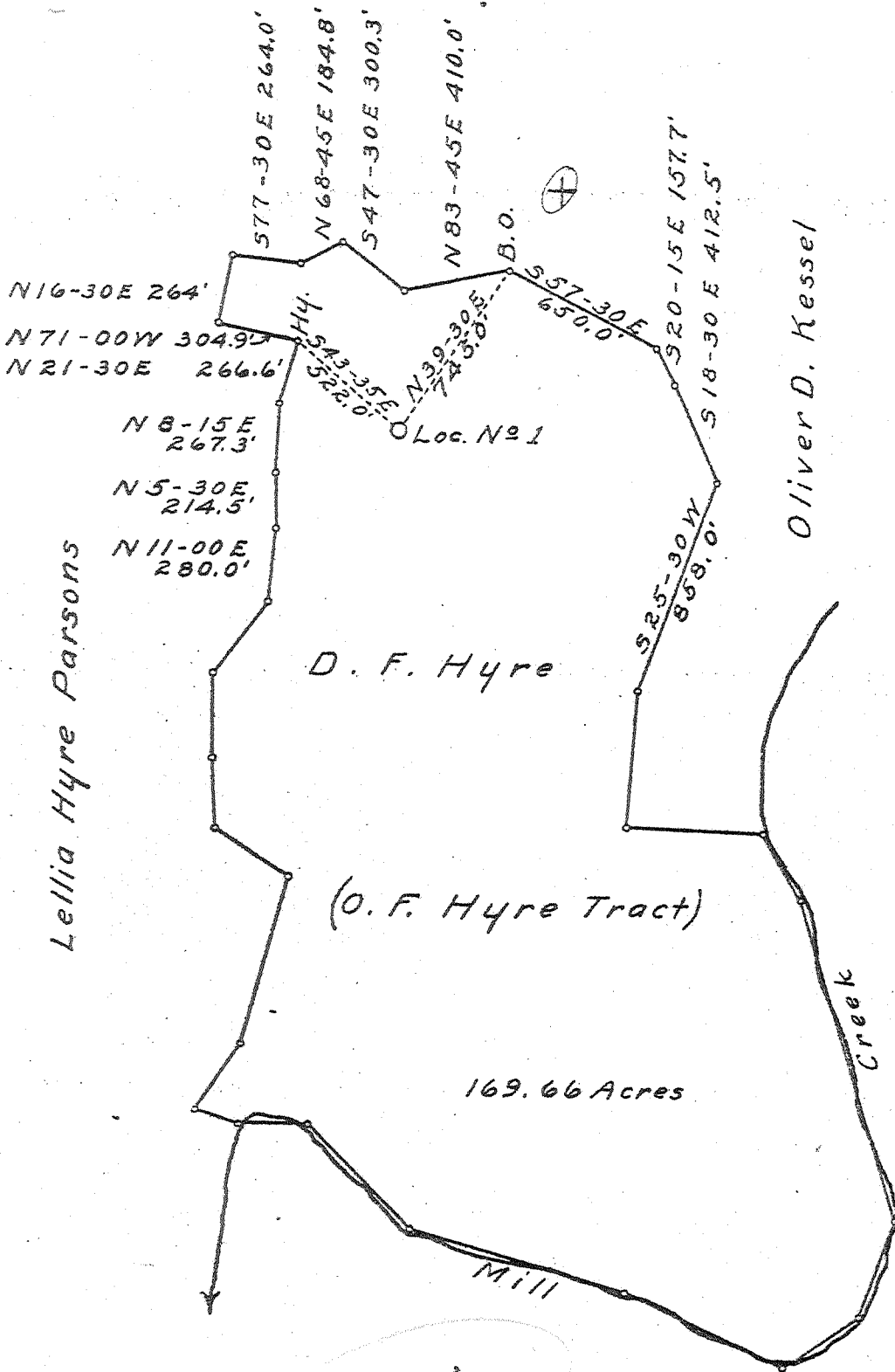


Latitude 38 50'

Longitude 81 35'



N16-30E 264'
 N71-00W 304.9'
 N21-30E 266.6'
 N8-15E 267.3'
 N5-30E 214.5'
 N11-00E 280.0'

S77-30E 264.0'
 N68-45E 184.8'
 S47-30E 300.3'
 N83-45E 410.0'

B.O.
 S57-30E 650.0'
 S20-15E 157.7'
 S18-30E 412.5'

S25-30W 858.0'

*Abandoned
 Aug. 49*

Levi Roush

W - 3.71
 S - 1.53

New Location
 Drill Deeper
 Abandonment

Company United Carbon Co.
 Address Charleston, W. Va.
 Farm D. F. Hyre
 Tract 169.66^a Acres 483.44 Lease No. 2859
 Well (Farm) No. 1 Serial No. 891
 Elevation (Spirit Level) 902.5
 Quadrangle Ripley SC
 County Jackson District Ripley
 Engineer C. B. Wilson
 Engineer's Registration No. 494
 File No. _____ Drawing No. _____
 Date Jan. 15, 1941 Scale 1" = 660'

STATE OF WEST VIRGINIA
 DEPARTMENT OF MINES
 OIL AND GAS DIVISION
 CHARLESTON

WELL LOCATION MAP
 FILE NO. JAC-111

+ Denotes location of well on United States Topographic Maps, scale 1 to 62,500, latitude and longitude lines being represented by border lines as shown.
 — Denotes one inch spaces on border line of original tracing.

6-6 192

WEST VIRGINIA DEPARTMENT OF MINES
OIL & GAS DIVISION
W E L L R E C O R D

Permit No. Jac-111
Ripley Quad.

Gas Well

Company United Carbon Co.,
Address 901 Union Bldg., Charleston, W. Va.
Farm D. F. Hyre ACRES 169.66
Location Mill Creek
Well No. 1 ELEV. 802.5
District Ripley - Jackson County
Surface & Mineral Opic F. Hyre, et al, Ripley, W. Va.
Commenced Jan. 22, 1941
Completed May 13, 1941
Shot 5/13/41 - depth 5113-5150
Open Flow 13/10ths Merc. in 7" O.D. 22#
Volume 5,628,000 c.f.
Rock Pressure 1890 lbs. 48 hrs.
Fresh Water 200 and 595
Salt Water 1520 and 1790

CASING & TUBING		
13	500	
10-3/4	1015	1015
8-5/8	2115	2115
7	5022	5022
2		5142

CASING CEMENTED:		
Size	Feet	Date
8-5/8	576	3/26/41
7	195	4/27/41

Soil	0	17		Slate & Shells	1653	1700	
Red Rock	17	47		✓ Salt Sand	1700	1885	W 1790
Blue Slate	47	77		✓ Little Lime	1885	1910	
Red Rock	77	117		✓ Big Lime	1910	1960	
Slate	117	165		✓ Injun Sand	1960	1975	
Sand	165	210	W 200	Lime	1975	2010	
Slate	210	235		Slate	2010	2020	
Red Rock	235	255		Sand	2020	2030	
Sand	255	275		Slate	2030	2040	
Red Rock	275	300		Lime	2040	2068	
Sand	300	360		Slate	2068	2075	
Red Rock	360	365		Lime Shells	2075	2110	
Sand	365	410		Slate & Shells	2110	2470	
Slate	410	420		Lime Gritty	2470	2500	
Sand	420	430		Slate & Shells	2500	2550	
Red Rock	430	530		Slate & Shells	2550	2850	
Sand	530	545		White Slate	2850	3580	
Red Rock	545	575		Slate & Shells	3580	3717	
Sand	575	616	W 595	✓ Brown Shale 441	3717	3780	Gas 3760
Slate & Shells	616	703					Show
Sand	703	738		Slate & Shells	3780	3980	
Slate & Shells	738	760		Brown Shale	3980	4056	
Sand	760	775		White Slate	4056	4170	Gas 4165
Blue Slate	775	800					Show
Red Rock	800	840		Brown Shale	4170	4270	
Slate	840	910		Slate & Shells	4270	4300	
Sand	910	955		White Slate	4300	4420	
Slate	955	975		Brown Shale	4420	4445	
Red Rock	975	1025		Slate	4445	4710	
Sand	1025	1045		Brown Shale	4710	4825	
Slate	1045	1065		Blue Slate	4825	4912	
Red Rock	1065	1075		✓ Black Shale - MARSHALL	4912	5003	
Slate	1075	1231		✓ Corniferous Lime - 463	5003	5111	
Sand	1231	1261		✓ Oriskany Sand	5111	5171	
Slate	1261	1266		✓ Lime	5171	5186	
Sand	1266	1284		Sand	5186	5198	
Slate	1284	1294		Lime	5198	5200	
Sand	1294	1365		Sand	5200	5204	
Slate	1365	1390		Lime	5204	5210	
Sand	1390	1445		Total Depth		5210	
Slate	1445	1490					
Sand	1490	1550	W 1520				
Slate	1550	1575					
Sand	1575	1595					
Slate	1595	1600					
Sand	1600	1620					
Slate	1620	1630					
Lime Shells	1630	1650					

485

2010
1885

125