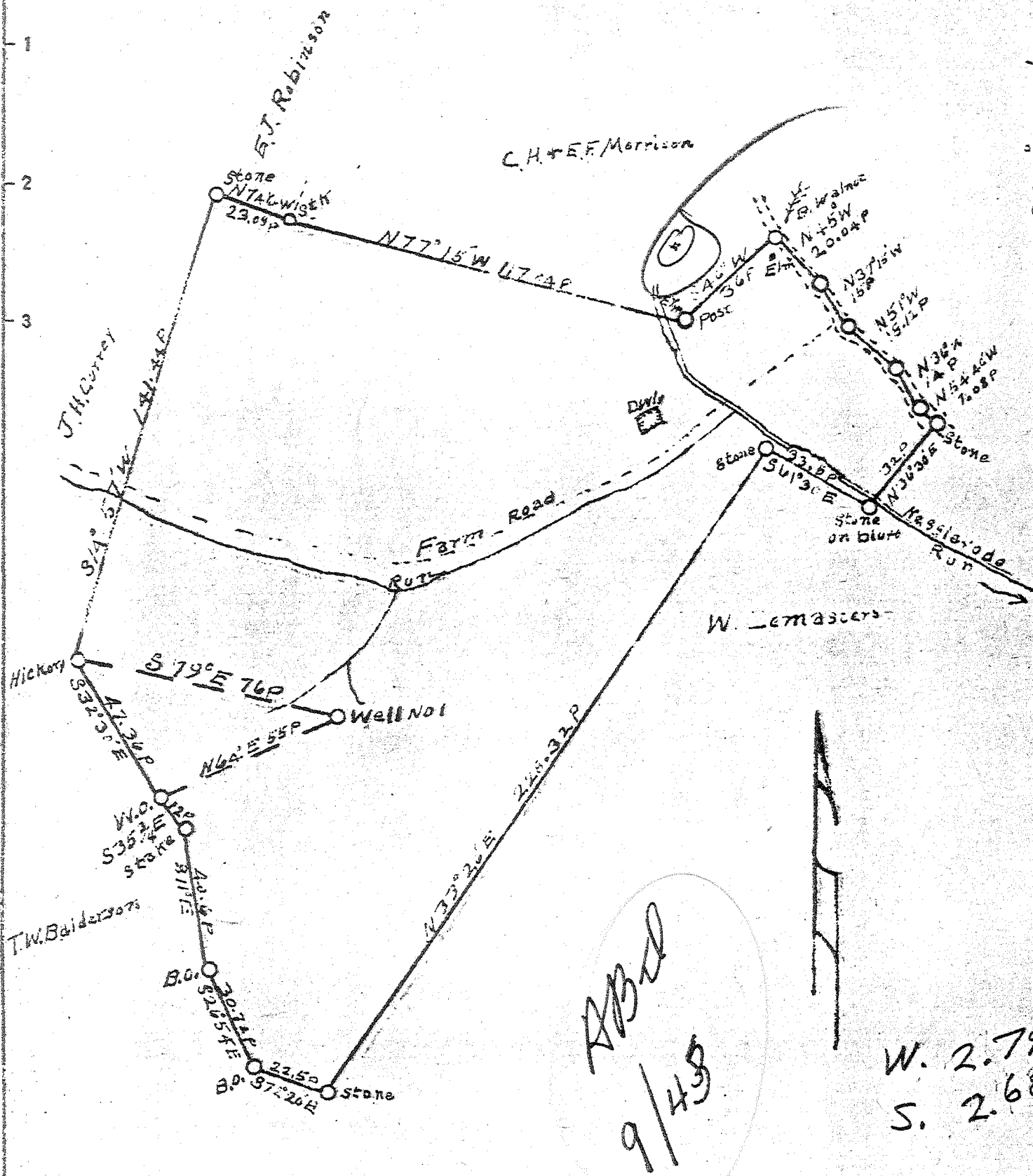


Latitude 39° 00'

Longitude 81° 35'



New Location
 Drill Deeper
 Abandonment

Vol. XVI, p. 86

2 C (H-5)

Company JOE RUBIN
 Address PARKERSBURG, W.VA.
 Farm Jas. T. & Audrey D. Currey
 Tract _____ Acres 2.03 Lease No. _____
 Well (Farm) No. 1 Serial No. _____
 Elevation (Spirit Level) 717'
 Quadrangle RIPLEY - NC
 County JACKSON District RAVENSWOOD
 Engineer J.E. Anderson
 Engineer's Registration No. Wood Co. Surveyor
 File No. _____ Drawing No. _____
 Date Jan. 29, 1941 Scale 1 in = 40 Poles

STATE OF WEST VIRGINIA
 DEPARTMENT OF MINES
 OIL AND GAS DIVISION
 CHARLESTON

WELL LOCATION MAP
 FILE NO. JAC-115

+ Denotes location of well on United States Topographic Maps, scale 1 to 62,500, latitude and longitude lines being represented by border lines as shown.

- Denotes one-inch spaces on border line of original tracing.

66-192 Deep Well

WEST VIRGINIA DEPARTMENT OF MINES
OIL & GAS DIVISION
W E L L R E C O R D

Permit No. Jac-115
Ripley Quad
Company
Address
Farm
Well No.
District
Surface
Commenced
Completed
Shot

Gas Well

Joe Rubin, ET AL.,
1900 - 19th St., Parkersburg, W. Va.
J. T. Currey Acres 203
1 Elev. 715.63
Ravenswood Jackson County
Jas. T. Currey, Ravenswood, W. Va.
Feb. 11, 1941
Aug. 19, 1941
Aug. 14, 1941

432 mcf

Shot 4895 - 4935

Vol XVI

Mud	rd	0	15	Sand	1295	1340	Casing Recd.
Sand Rock		15	25	Slate	1340	1365	18" Con. 20'
Red Rock		25	60	Sand	1365	1415	14" 622'
Shell		60	65	Slate & Shells	1415	1425	8-5/8 1998
Rock		65	95	Sand	1525	1555	7" 4800'
Sand		95	120 W.	Slate	1555	1560	
White Slate		120	145	Black Shale	1560	1615	
Sand		145	155	Lime	1615	1646	
Red Rock		155	180	Maxon Sand	1646	1714	
Blue Slate		180	195	Lime	1714	1725	
Red Rock		195	230	Break	1725	1727	
Slate		230	264	Lime	1727	1795	
Blue Shale		264	280	Sand	1795	1799	
Sand		280	310	Lime	1799	1815	
Red Rock		310	330	Sand	1815	1880	
Blue Slate		330	355	Slate	1880	1898	
Red Rock		355	360	Sand	1898	1985	
Blue Slate		360	380	Slate	1985	2003	
Lime & Shell		380	385	Lime	2003	2023	
Red Rock		385	400	Slate & Shells	2028	2325	Coffee 2300-2325
Blue Slate		400	410	Brown Shale	2325	2328	Beke 2328-2333
Sand		410	430	Lime & Shells	2328	2342	
Red Rock		430	445	White Slate & Shell	2342	3945	
Blue Slate		445	480	Brown Shale	3945	4020	
Red Rock		480	502	Slate	4020	4500	
Lime		502	515	Brown Shale	4500	4759	
Blue Slate		515	525	Corniferous Lime	4780	SLM 4891	
Pittsburgh Sand		525	563	Oriskany Sand	4891	4965	
White Slate		563	568				
Sand		568	610				
White Slate		610	630				
Red Rock		630	635				
White Slate		635	735				
Red Rock		735	770				
Slate & Shells		770	813				
Sand		813	821				
Slate & Shells		821	905				
Red Rock		905	930				
Lime Shells		930	938				
Slate & Shells		938	956				
Sand		956	966				
Slate		966	986				
Lime		986	1000				
Blue Slate		1000	1010				
White Lime		1010	1015				
Slate		1015	1025				
White Slate		1025	1075				
Sand		1075	1145 W. 1112'				
Slate		1145	1150				
Sand		1150	1205 W. 1185'				
White Slate		1205	1220				
Lime & Shells		1220	1230				
Slate		1230	1255				
Sand		1255	1265				
White Slate		1265	1295				

see sample product

Coffee 2300-2325
Beke 2328-2333

485
Helderberg 4957
4780 4891
716 716
4064 4175

sample