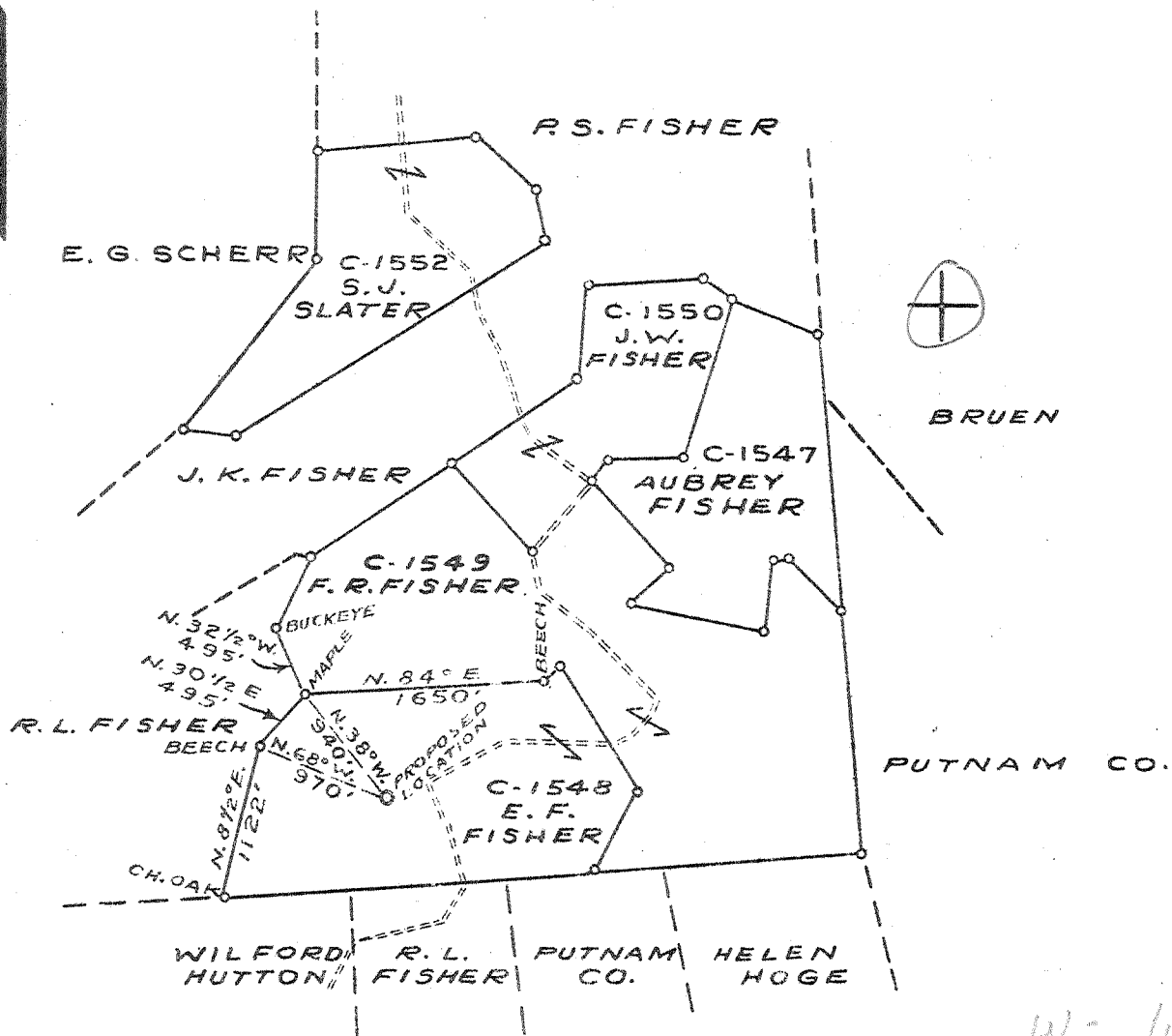


Latitude 38° 40'

Longitude 81° 35'



W - 1.98
S - 4.68

- New Location
- Drill Deeper
- Abandonment

LOCATION 1.8 M. S.E. GOLDTOWN

Company COLUMBIAN CARBON CO.
 Address BOX 1240-CHARLESTON-W.VA.
 Farm E. F. FISHER ET AL
C-1547-1548-1549
 Tract _____ Acres 368 1/4 Lease No. 1550-1552
 Well (Farm) No. ONE Serial No. _____
 Elevation (Spirit Level) 976.6
 Quadrangle KENNA SE (5) C
 County JACKSON District RIPLEY
 Engineer J. M. Bell
 Engineer's Registration No. 772
 File No. _____ Drawing No. _____
 Date 3-22-41 Scale 1" = 1320'

STATE OF WEST VIRGINIA
 DEPARTMENT OF MINES
 OIL AND GAS DIVISION
 CHARLESTON

WELL LOCATION MAP
 FILE NO. JAC-132

+ Denotes location of well on United States Topographic Maps, scale 1 to 62,500, latitude and longitude lines being represented by border lines as shown.

- Denotes one inch spaces on border line of original tracing.

WEST VIRGINIA DEPARTMENT OF MINES
OIL & GAS DIVISION
W E L L R E C O R D

Gas Well

Permit No. Jac-132

Kenna S E Quad.

Company

Columbian Carbon Company

Fresh Water 340' 6-11 1/2 Blrs

Address

Box 1240, Charleston, W.Va.

every 32 hrs.

Farm

E. F. Fisher, et al Acres 369 1/2

557-59' 1-11 1/2 BPH

Location

Duddons Fk of Lt. Fk. Pocca River

Salt Water 1645' HWF

Well No.

1 (GW-481)

Elev. 979.6 DF

District

Ripley Jackson County

Casing & Tubing

Surface

E. F. Fisher, et al, Kenna, W. Va.

16 59' 5" 59' 5"

Commenced

4-16-41

10 1014' 6" 611' 2"

Completed

7-14-41

8718 Mcf - Vol XVI

8-5/8 2205' 2205'

7 5237' 4" 5237' 4"
2-3/8 5329' 9" 5329' 9"

Surface

0 5

Sand

5 35

Blue Slate

35 70

Hard Sand

70 85

Sand

85 140

Slate

140 164

Red Rock

164 175

Slate

175 183

Red Rock

183 192

Slate

192 212

Red Rock

212 322

Sand

322 338

Slate

338 340W340' 6-11 1/2

Red Rock

340 385

Slate & Shells

385 527

Sand

527 559W.557-59'

Blue Shale

559 564

Red Rock

564 576

Lime Shell

576 581

Blue Shale

581 595

Red Rock

595 617

Blue Shale

617 619

Shell

619 626

Blue Shale

626 645

Shell

645 653

Blue Shale

653 660

Red Rock

660 723

Lime Shells

723 732

Settling Sand

732 735

Blue Slate

735 740

Lime Shell

740 748

Red Rock

748 756

Lime Shell

756 760

Blue Slate

760 773

Blue Lime

773 789

Red Rock

789 820

Dark Lime Shell

820 829

Red Rock & Shells

829 874

Blue Shale & Shells

874 891

Red Rock

891 935

Sandy Lime

935 951

Blue Shale

951 970

Sand

970 996

Slate

996 1003

Sand

1003 1071

Dark Slate, soft

1071 1090

White Slate

1090 1133

Sand

1133 1170

Slate, dark

1170 1175

Sand

1175 1240

Coal

1240 1242

Dark Slate

1242 1262

Sand

1262 1398

Dark Slate

1398 1505

Slate & Shells

1505 1540

Sand

1540 1585

Slate

1585 1620SWL645HF

Lime

1620 1640

1st Salt Sand

1640 1645

Water Sand

1645 1675

~~2nd Salt Sand~~

~~Slate~~

~~Sand~~

~~Pencil Cave~~

~~Big Lime~~

~~Big Injun Sand~~

~~Slate~~

~~Lime Shell~~

~~Slate~~

~~Slate & Shell~~

~~Slate~~

~~Slate & Shells~~

~~Brown Shale - 441~~

~~Slate & Shells~~

~~Brown Shale~~

~~Light Slate~~

~~Dark Slate & Shells~~

~~Slate~~

~~Light Shale~~

~~Brown Shale~~

~~White Slate~~

~~Black Shale - MARCELLUS~~

~~Corniferous Lime~~

~~Oriskany Sand~~

~~Pays:~~

~~Total Depth~~

~~Cement Record:~~

~~5-25-41 - Cemented 8-5/8" csg. Ran 92 sacks~~

~~Alpha Cement, mixed with 2 sacks of Aquagel.~~

~~Ran plug ahead of cement and plug on top of~~

~~cement with 10' spacer. Circulation at 500'~~

~~Pipe went to within 1' of bottom. 10' cement~~

~~in hole. S.K. Johnson, cementer-Halliburton~~

~~Oil Well Cementing Co.~~

~~7-4-41 Cemented 7" csg. Ran 12 sacks Super~~

~~ior cement indump bailer. Picked pipe up~~

~~40' and reset in cement. 44' cement in hole.~~

~~Cemented by Columbian Carbon Co. crew.~~

475

5180 5285