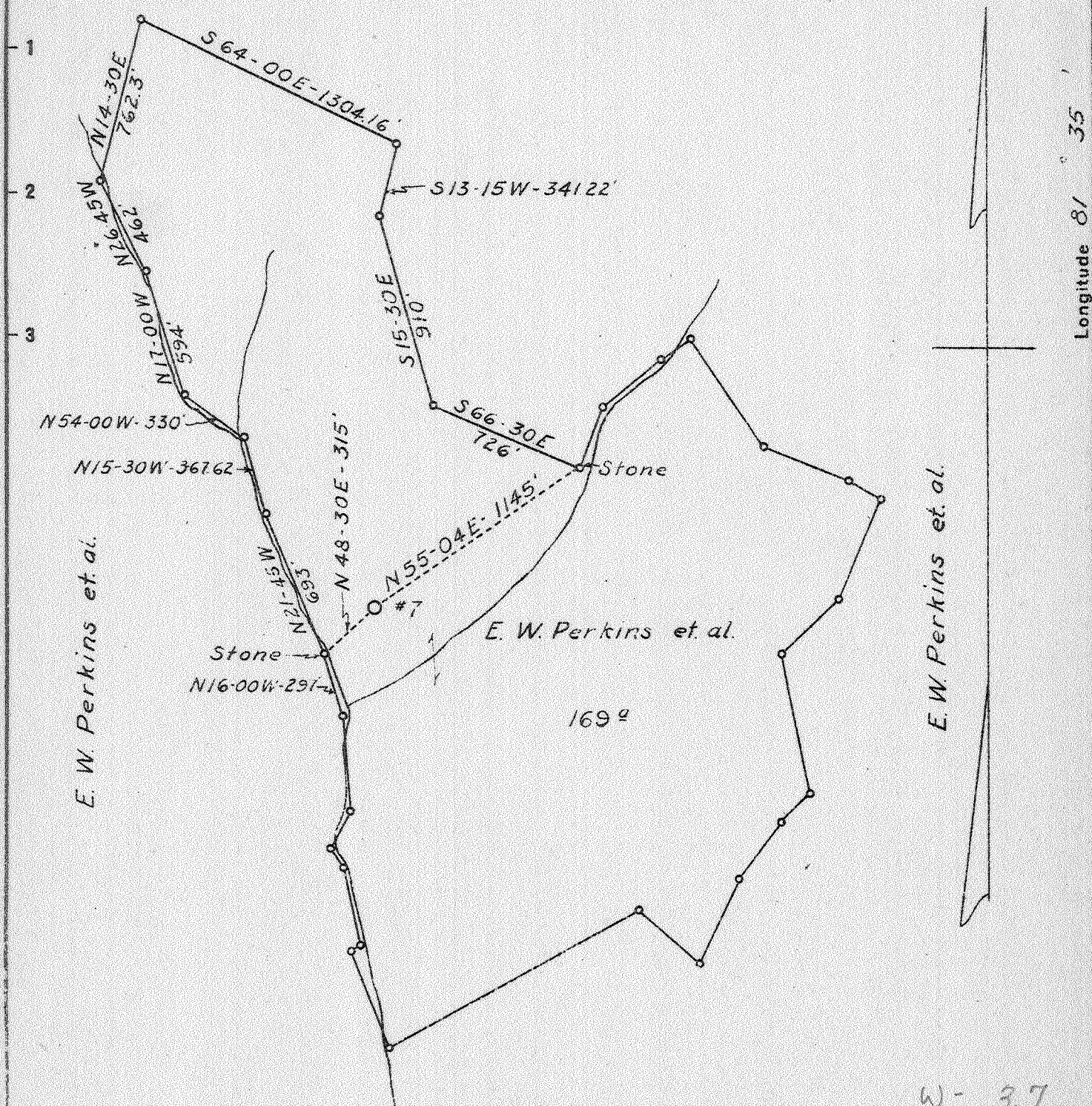


Latitude 38° 40'

E. W. Perkins et al.



W - 3.7
S - 1.58

Abandoned
Oct. 47

- New Location
- Drill Deeper
- Abandonment

Company United Carbon Co.
 Address Charleston, W. Va.
 Farm Elizabeth W. Perkins et al.
 Tract Acres 169 Lease No. 2428
 Well (Farm) No. 7 Serial No. 945
 Elevation (Spirit Level) 867.6
 Quadrangle Kenna ~~HW~~ C
 County Jackson District Ripley
 Engineer E. B. Wilson
 Engineer's Registration No. 494
 File No. Drawing No.
 Date: March 31, 41 Scale 1" = 660'

STATE OF WEST VIRGINIA
 DEPARTMENT OF MINES
 OIL AND GAS DIVISION
 CHARLESTON

WELL LOCATION MAP
 FILE NO. JAC-133

- + Denotes location of well on United States Topographic Maps, scale 1 to 62,500, latitude and longitude lines being represented by border lines as shown.
- Denotes one inch spaces on border line of original tracing.

66 / 92

WEST VIRGINIA DEPARTMENT OF MINES
OIL & GAS DIVISION
W E L L R E C O R D

Permit No. Jac-133		Gas Well
Kenna N.W. Quad		
Company	United Carbon Company	Casing & Tubing
Address	United Carbon Bldg., Charleston, W. Va.	13 555' 00
Farm	E. W. Perkins Acres 169	10 1097 1097
Location	Dudden Fork	8-5/8 2128 2128
Well No.	7 Elev. 867.6	7 5063 5063
District	Ripley Jackson County	2 5186
Surface	Harry Johnson, Ripley, W. Va.	Cemented 8-5/8" 544 6/17
Mineral	E.W. Perkins, J.M. Mash 710 Kanawha St Charleston, W. Va.	7 195 8/11/
Commenced	April 19, 1941	
Completed	Aug. 29, 1941	
Shot	8/30/41 Depth 5161'-5196'	
Flow	11/10ths Merc. in 7" O.D.	
Volume	5,173,000 Cu. Ft.	
Rock Pressure	1830 lbs 68 hrs.	
Salt Water	1678 Ft.	

Red Rock	0	15	Sand	5207	5214
Slate	15	90	Lime	5214	5218
Red Rock	90	110	Sand	5218	5235
Sand	110	175	Lime	5235	5249
Red Rock	175	230	Total Depth		5249
Slate	230	325	Well Drilled by -		
Red Rock	325	425	D. E. Williamson, Contractor		
Slate & Shells	425	570	Drillers -		
Sand	570	605	S. C. Wilson		
Slate	605	640	W. C. Harper		
Red Rock	640	660			
Slate	660	780			
Lime	780	805			
Slate & Shell	805	830			
Slate	830	865			
Red Rock	865	900			
Slate & Shells	900	1005			
Sand	1005	1035			
Slate & Shells	1035	1050			
Sand	1050	1075			
Slate & Shells	1075	1130			
Sand	1130	1192			
Slate & Shells	1192	1240			
Sand	1240	1280			
Slate & Shells	1280	1315			
Slate	1315	1358			
Sand	1358	1375			
Slate & Shells	1375	1470			
Sand	1470	1525			
Slate	1525	1607			
Salt Sand	1607	1908W.1678HF			
Maxon Sand	1908	1938			
Big Lime	1938	2020			
Injun Sand	2020	2113			
Lime	2113	2130			
Slate & Shells	2130	2485			
Brown Shale	2485	2495			
Perca Shells	2495	2550G/S2495			
Slate & Shells	2550	3240			
Grey Shale	3240	3710			
Brown Shale - 444	3710	3838			
Lime Shells	3838	3860G/S3838-42			
Slate & Shells	3860	4115			
Shale Broken	4115	4285			
Grey Shale	4285	4470			
Shale broken	4470	4495			
Grey Shale	4495	4715			
Brown Shale	4715	5010			
Black Shale	5010	5048			
Corniferous Lime	5048	5159			
Criskany Sand	5159	5204			
Lime - held	5204	5207			

485