

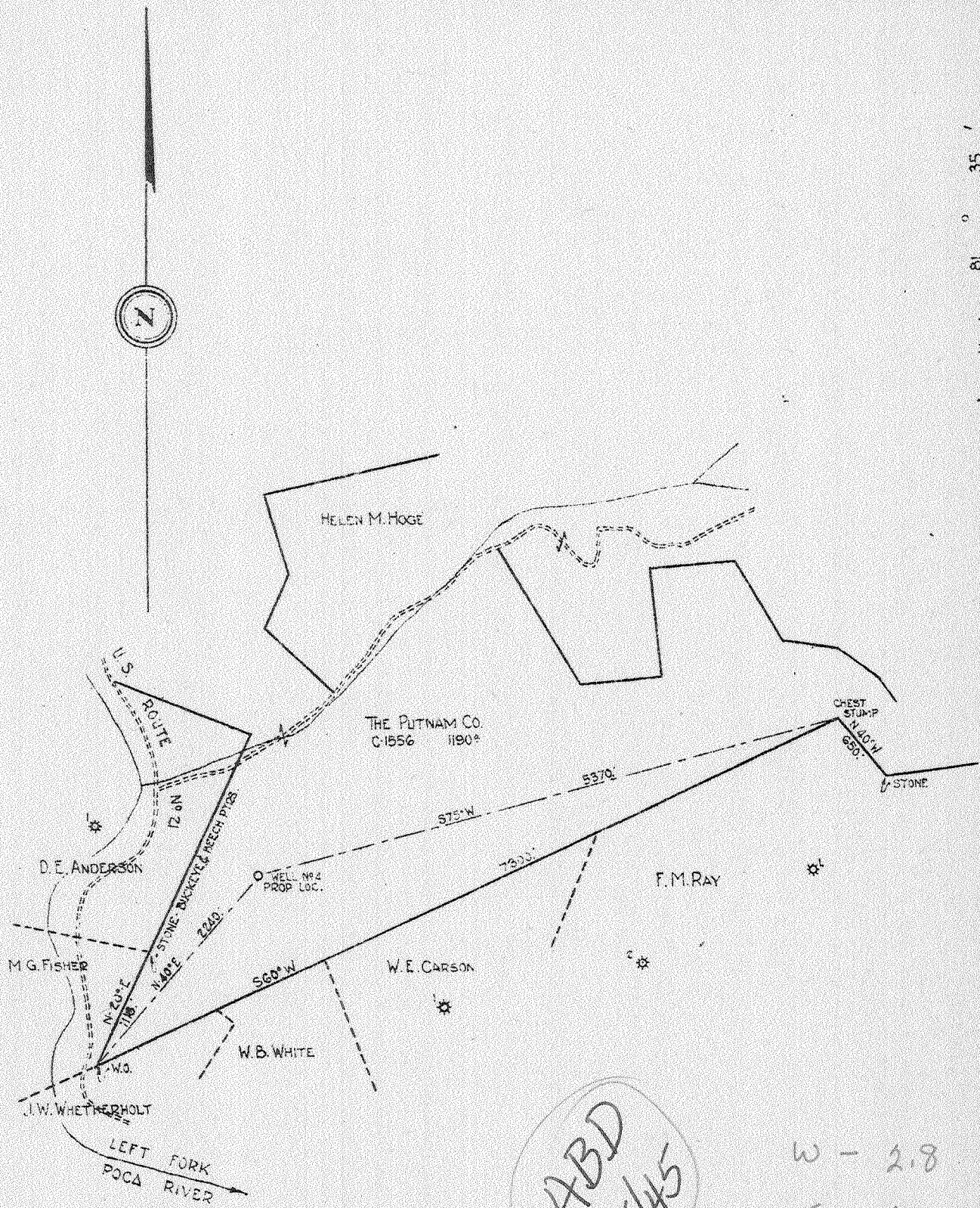
2

3



Latitude 38 35

Longitude 81 35



ABD  
5/45

W - 2.8  
S - 2.

New Location    
 Drill Deeper    
 Abandonment

1.0 MI. N-LOOP.

Company COLUMBIAN CARBON Co.  
 Address Box # 1240-CHARLESTON, W. VA.  
 Farm THE PUTNAM Co.  
 Tract \_\_\_\_\_ Acres 1190. Lease No. C-1556  
 Well (Farm) No. 4 Serial No. \_\_\_\_\_  
 Elevation (Spirit Level) 1065.  
 Quadrangle KENNA (8) SC  
 County JACKSON District RIDLEY  
 Engineer C.A. Brantiam  
 Engineer's Registration No. 683  
 File No. \_\_\_\_\_ Drawing No. \_\_\_\_\_  
 Date 4/15/4 Scale 1"=1320'

STATE OF WEST VIRGINIA  
 DEPARTMENT OF MINES  
 OIL AND GAS DIVISION  
 CHARLESTON

WELL LOCATION MAP  
 FILE NO. JAC-143

+ Denotes location of well on United States Topographic Maps, scale 1 to 62,500, latitude and longitude lines being represented by border lines as shown.  
 - Denotes one inch spaces on border line of original tracing.

WEST VIRGINIA DEPARTMENT OF MINES  
OIL & GAS DIVISION  
W E L L R E C O R D

Permit No Jac-143

Company Columbian Carbon Co  
Address Box 1240, Charleston, W.Va.  
Farm The Putnam Co Acres 1190  
Location Left Fork of Poca River  
Well No 4(GW-488) Elev. 1048.9 DF  
District Ripley Jackson County  
Surface W.B. White et ux, R.F.D.  
Kenna, W.Va.  
Mineral The Putnam Co, et al  
(Contact Col. Carbon-addresses)  
Commenced 5-13-41  
Completed 8-26-41  
Shot 8-27-41 Depth 5337-5397  
Volume 2,023 MCF  
Rock Pressure 730 lbs. 12 days  
Oil 2325' show  
Fresh Water 1035' 1 blr. in 1 hr.; 1095-1100'  
2-13" blrs. in 1 hr  
Salt Water 1720' 1600' in hole. 1890' Hole full

Gas Well

Casing & Tubing  
16 19'2" 19'2"  
10 1/2 1155'7" Pulled  
8 5/8 2275'3" 2275'3"  
7" 5286'8" 5286'8"  
2 3/8 5407'9" 5407'9"  
Liner  
3 1/2" 93'0 93'0

Sand	0	50
Red Slate	50	105
Grey Slate	105	132
Sand	132	173
Grey Slate	173	215
Red Slate	215	250
Sand	250	265
Red Slate	265	305
Grey Slate	305	340
Red Slate	340	365
Grey Slate	365	385
Red Slate	385	430
Grey Slate		
& Shells	430	574
Sand	574	590
Grey Slate	590	603
Sand	603	642
Red Slate	642	685
Grey Shale	685	693
Sand	693	714
Red Rock	714	790
Grey Slate	790	810
Lime	810	841
Grey Slate	841	855
Grey Shale	855	881
Sand	881	894
Slate	894	910
Red Slate	910	930
Sl.& Shells	930	1025
Sand	1025	1052
Sl.& Shells	1052	1064
Sand	1064	1117
Grey Shale	1117	1145
Lime Shell	1145	SL 1153
Grey Slate	1153	1162
Sand	1162	1190
Slate	1190	1195
Sand	1195	1206
Slate	1206	1242
Sand	1242	1306
Sl.& Shells	1306	1335
Coal	1335	1338
Sand	1338	1352

Slate	1352	1365
Sand	1365	1388
Dark Slate	1388	1488
Sand	1488	1570
Slate	1570	1598
Hard Lime	1598	1609
Salt Sand	1609	1765
Dark Lime	1765	1795
Sand	1795	1915
Slate	1915	1916
Sand	1916	1993
Pencil Sl.	1993	1996
Big Lime	1996	2052
Sandy Lime	2052	2143
Slate	2143	2144
Sand	2144	2220
Blue Lime	2220	2222
Bk. Lime	2222	2254
Sl.& Shells	2254	2282
Gritty Lime	2282	2300
Sl.& Shells	2300	2345 Sh.Oil
Br. Sand	2345	2370 2325
Wh. Shale	2370	2622
Berea Sand	2622	2650 Gas-Sh
Sl.& Shells	2650	3842 2630
Br. Shale	3842	3894
Sl. & Shells	3894	4300
Br. Shale	4300	4479
Wh. Slate	4479	4875
Br. Shale	4875	5115 Gas Sh.
Wh. Slate	5115 SLM	5222 4917
Corniferous	5222 SLM	5331 SLM
Oriskany	5331 SLM	5379
Grey Lime	5379	5390
Oriskany	5390	5399
Grey Lime	5399	5412 SLM
TOTAL DEPTH	5412 SLM	
PAYS:-	5338-49; 5360-63; 5392-94	

CEMENT RECORD:

5-31-41-Mudded 10 1/2 casing.  
6-27-41-Cemented 8 5/8 " casing  
Ran 95 sacks Alpha cement mixed  
with 2 sacks Aquagel. 21' cement in  
pipe.  
8-9-41-Cemented 7" casing. Ran 10  
sacks cement. 40' solid cement in  
pipe.