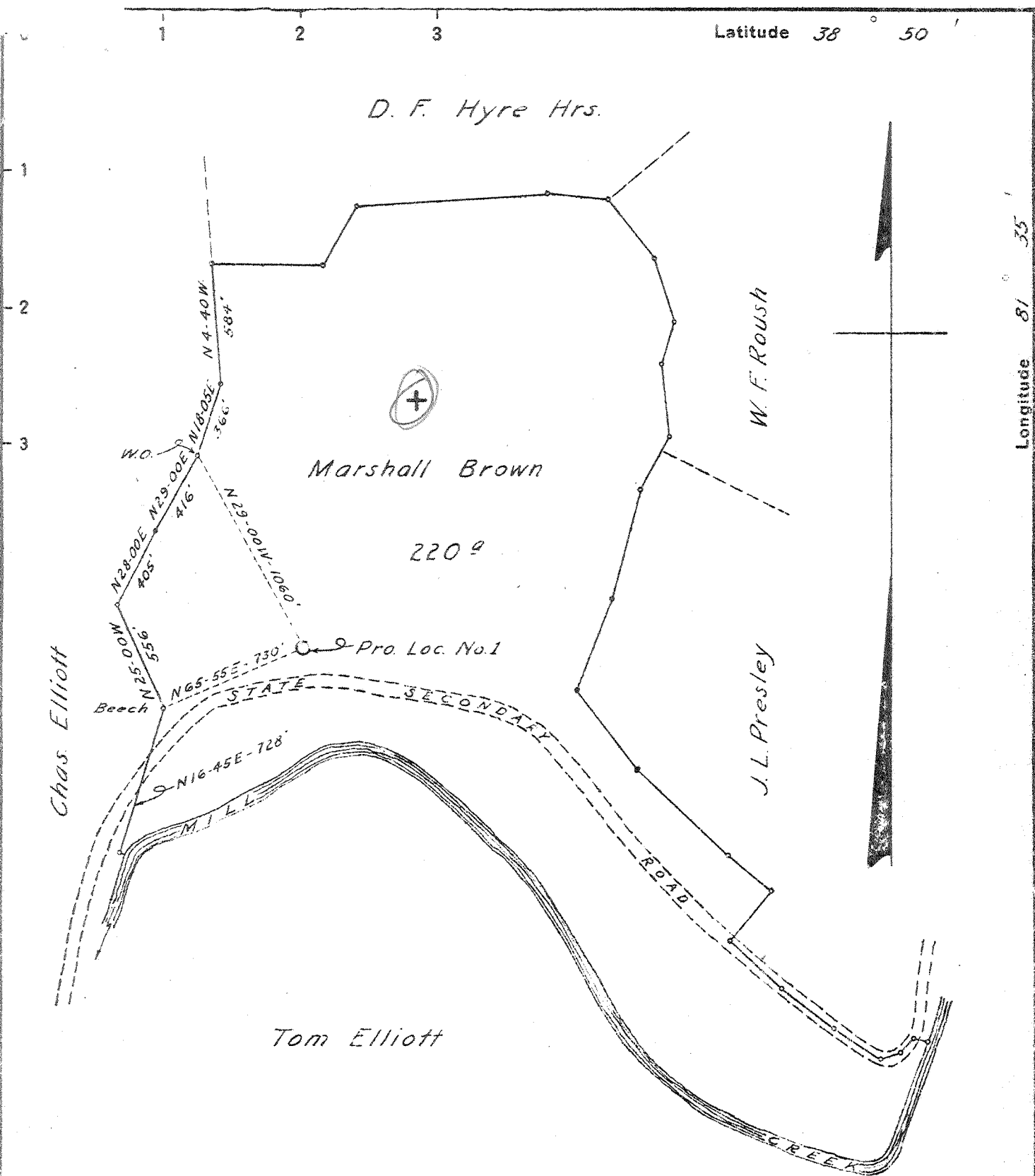


Latitude 38° 50'

Longitude 81° 35'



*Abandoned
No. 47*

4.47-W
~~4.53~~
~~2.80~~
2.83-3

New Location X
Drill Deeper
Abandonment

Company	United Carbon Co.	
Address	Charleston, W. Va	
Farm	Marshall Brown	
Tract	Acres 220	Lease No. 2985
Well (Farm) No.	Serial No. 956	
Elevation (Spirit Level)	653.87	
Quadrangle	Ripley SW SC	
County	Jackson	District Ripley
Engineer	E. S. Withrow	
Engineer's Registration No.		
File No.	Drawing No.	
Date	6-4-41	Scale 1" = 660'

STATE OF WEST VIRGINIA
DEPARTMENT OF MINES
OIL AND GAS DIVISION
CHARLESTON

WELL LOCATION MAP
FILE NO. JAC-161

+ Denotes location of well on United States Topographic Maps, scale 1 to 62,500, latitude and longitude lines being represented by border lines as shown.
- Denotes one inch spaces on border line of original tracing.

6-6-192

WEST VIRGINIA DEPARTMENT OF MINES
OIL & GAS DIVISION
WELL RECORD

Permit No. Jac-161
Ripley S. W. Quad

Gas Well

Company	United Carbon Company	Casing & Tubing		
Address	United Carbon Bldg., Charleston, W. Va.	13- 3 8	663	00
Farm	Marshall Brown Acres 220	10 2	1116	1116
Location	Mill Creek	8- 5 8	2031	2031
Well No.	1 Elev. 653.87	7	4878	4878
District	Ripley Jackson County	2- 3		4995
Surface	Marshall Brown, Ripley, W. Va.	Casing Cemented		
Commenced	July 19, 1941	8- 5 8	464	9-6-41
Completed	Oct. 23, 1941	7" O.D.	207	10-9-41
Shot	10-23-41 Depth 4960-4994			
Flow	40/10ths Water in 7" O.D.			
Volume	2,676,000 Cu.Ft.			
Rock Pressure	1720 lbs 24 hrs.			
Fresh Water	130 Ft.			
Salt Water	1640 Ft.			

Soil		0	16	— Corniferous Lime ⁴⁶³	4854	4957
Rock	rd	16	35	— Oriskany Sand	4857	5008
Mud	bl	35	55	— Lime	5008	5025
Rock	rd	55	75	Sand ^{Hold.}	5025	5037
Slate		75	100	Lime	5037	5050
Lime		100	110	Total Depth ⁴⁹⁵		5050
Sand		110	190	W. 130' Filled hole to 5005' Shot with 60 qts. glycerine from 4960 to 4994. Oct. 23, 1941		
Lime		190	240	Well Drilled by - Liming & Summers, Contr. Clendenin, W. Va.		
Slate		240	268	Drillers - C. C. Pickens Harry Antel		
Rock	rd	268	300			
Sand		300	315			
Slate		315	350			
Sand		350	370			
Rock	rd	370	420			
Slate		420	435			
Rock	rd	435	455			
Slate		455	550			
Sand		550	585			
Slate		585	610			
Sand		610	625			
Slate		625	635			
Rock		635	650			
Slate		650	680			
Rock	rd	680	725			
Slate		725	735			
Sand		735	785			
Slate		785	795			
Sand		795	820			
Slate		820	855			
Sand		855	910			
Slate		910	995			
Sand		995	1095			
Slate & Shells		1095	1300			
Sand		1300	1375			
Slate & Shells		1375	1575			
Salt Sand		1575	1800	W. 1640' 4B.		
Big Lime ²⁴⁰		1800	1875			
Slate		1875	1920	W. 1675' Hole Full		
Injun Sand		1920	1970			
Slate		1970	1980			
Lime Shells		1980	2125			
Slate & Shells		2125	2345			
Berea Shells		2345	2360	G/S 2350		
Slate		2360	2400			
Slate & Shells		2400	2900			
Slate		2900	3600	G. 3045' 10/10 "2"		
Shale ⁴⁴¹ bn		3600	3700			
Slate		3700	3900			
Shale bn		3900	4300			
Slate		4300	4575			
Shale bn		4575	4854			