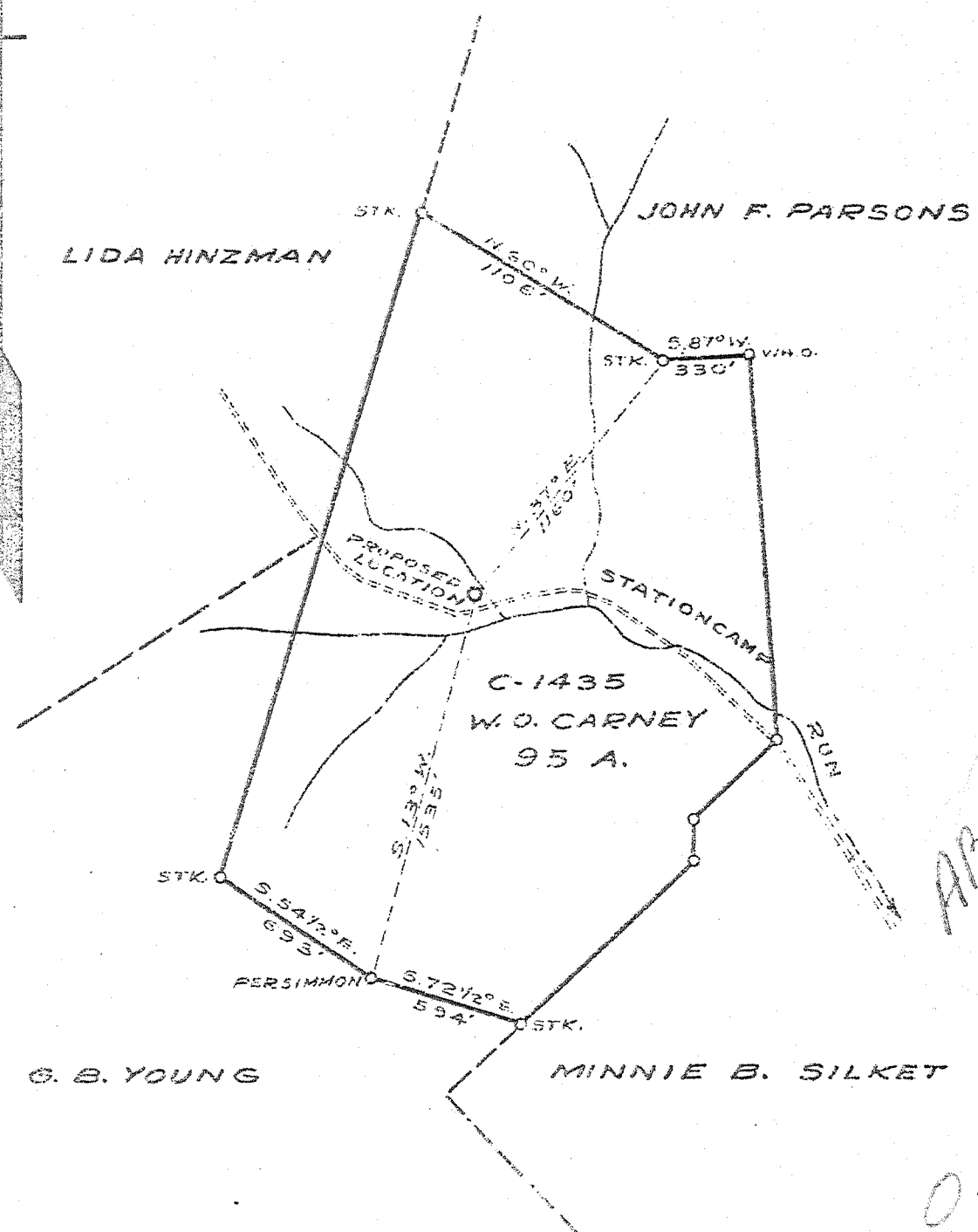


Latitude 38 50

Longitude 81 35



ABD  
1/44

0.69 S  
4.1 W

New Location,    
 Drill Deeper,    
 Abandonment,

LOCATION 2.2 M. WEST OF HEREFORD

Company COLUMBIAN CARBON CO.  
 Address BOX 1240 - CHARLESTON - W.VA.  
 Farm W. O. CARNEY  
 Tract \_\_\_\_\_ Acres 95 Lease No. C-1435  
 Well (Farm) No. ONE Serial No. \_\_\_\_\_  
 Elevation (Spirit Level) 589.8  
 Quadrangle RIPLEY 50-8  
 County JACKSON District RIPLEY  
 Engineer J. M. Hill  
 Engineers Registration No. 772  
 File No. \_\_\_\_\_ Drawing No. 386  
 Date 7-23-41 Scale 1" = 560'

STATE OF WEST VIRGINIA  
 DEPARTMENT OF MINES  
 OIL AND GAS DIVISION  
 CHARLESTON

WELL LOCATION MAP  
 FILE NO. JAC-190

+ Denotes location of well on United States Topographic Maps, scale 1 to 62,500, latitude and longitude lines being represented by border lines as shown.

- Denotes one inch spaces on border line of original tracing.

*Handwritten signature or initials at the bottom of the page.*

WEST VIRGINIA DEPARTMENT OF MINES  
OIL & GAS DIVISION  
W E L L R E C O R D

Permit No. Jac-190		Gas Well
Company	Columbian Carbon Co.	Casing & Tubing
Address	Box 1240, Charleston, W.Va.	16 37'9" 37'9"
Farm	W.O. Carney Acres 95	133/8 605'6 Pulled
Location	Stationcamp Run	10 1/2 1094'11 "
Well No.	1 (GW-602) Elev. 692.2 DF	8 5/8 2049' 2049'
District	Ripley Jackson County	7 4914'8 4914'8
Surface	E.M. Rhodes et ux, Ripley, W.Va.	2 3/8 5001'10 5001'10
Mineral	W. C. Carney, et al-contact Columbian Carbon for addresses)	3 1/2 94'1 94'1
Commenced	8-25-41	
Completed	11-7-41	
Shot	11-7-41 Depth 4971-5001 with 200# 80% Gelatin	
Volume	1,295 (Frozen off)	
Rock Pressure	1260# 2 days	
Oil	Show 1428'	
Fresh Water	35' Hole full; 188' 3 1/2"-15 1/2" Blrs.---	
	465' 4 1/2"-15 1/2" Blrs. pr. hr.; 481' 6 1/2"	
	15 1/2" Blrs. pr. hr.;	
Salt Water	1235' 1-10" Blrs. pr. hr.; 1335' 1 Blr. pr. hr.;	
	1678' Hole Full	

Red Rock	0	31	Sand	1107	1141	
Slate	31	36	Slate & Shells	1141	1198	
Red Rock	36	75	White Slate	1198	1206	
Slate	75	95	Sand	1206	1246	
Red Rock	95	105	Slate	1246	1322	
Slate	105	108	Sand	1322	1337	
Red Rock	108	125	Slate	1337	1348	
Lime	125	130	Sand	1348	1379	
Slate	130	142	Slate	1379	1420	
Red Rock	142	172	Sand	1420	1480 Sh. Oil	
Pink Rock	172	178	Slate Shells	1430	1605 1428	
Sand	178	253	- Salt Sand	1605	1712	
Red Rock	253	260	Slate	1712	1724	
Lime	260	285	- Maxon	1724	1779	
Red Rock	285	295	- Big Lime	1779	1890	
Slate & Shells	295	318	- Big Injun Sand	1890	1960	
Red Rock	318	353	Slate	1960	1964	
Blue Slate	353	379	Sandy Lime	1964	1990	
Red Rock	379	399	Slate & Shells	1990	2020	
Lime	399	415	Blue Slate	2020	2035	
Slate	415	428	Lime	2035	2050	
Sand	428	499	Slate Shells	2050	2345	
Slate	499	542	- Borca Grit	2345	2364	
Red Rock	542	547	Slate Shells	2364	3575 Sh. Gas	
Blue Slate	547	602	Brown Shale	3575	3605 2500	
White Slate	602	604	Slate Shells	3605	4569	
Sand	604	630	Brown Shale	4569	4853 SLM	
Slate	630	637	- Corniferous Lime	4853 SLM	4970 SLM	
Red Rock	637	670	Oriskany Sand	4970 "	5016	
Slate	670	681	Lime	5016	5030	
Red Rock	681	705	Oriskany Sand	5030	5039	
Sand	705	728	Lime	5039	5043 SLM	
Red Rock	728	761	TOTAL DEPTH	5043	SLM	
Slate	761	770				
Red Rock	770	784	PAYS: 4971-73; 4980-82; 4993-96;			
Lime	784	792	5012-14			
Slate Shells	792	824				
Coal	824	826	CEMENT RECORD:			
Slate Shells	826	842	9-4-41 Aquagelled 13 3/8" casing.			
Red Rock	842	864	Ran 9 sacks Aquagel.			
Slate Shells	864	887	9-10-41-Aquagelled 10 1/2" casing, Ran			
Red Rock	887	906	20 sacks Aquagel.			
Slate	906	920	9-26-41-Cemented 8 5/8" casing, Ran			
Sand	920	926	70 sacks Superior cement and 1 sack			
Slate	926	961	Aquagel, 20' solid cement in pipe.			
Lime	961	968	10-23-41-Cemented 7" casing, Ran 12			
Slate Shells	968	1042	sacks Alpha cement in dump bailer,			
Gritty Lime	1042	1057	51' solid cement in pipe.			
Slate & Shells	1057	1107				