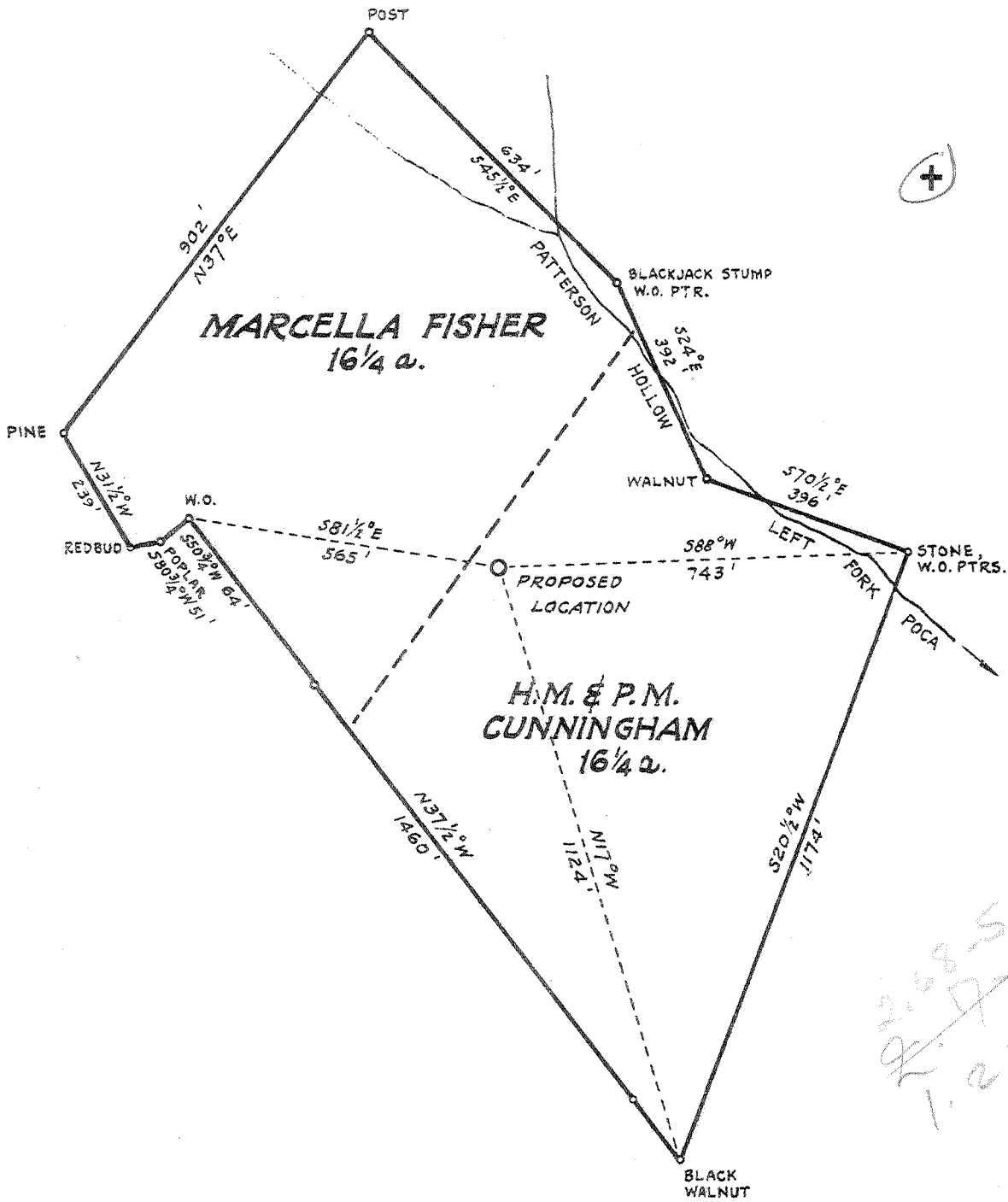


Latitude 38° 40'

Longitude 81° 40'



New Location  X  
 Drill Deeper   
 Abandonment

Company FISHER GAS COMPANY  
 Address CLENDENIN, W.VA.  
 Farm MARCELLA FISHER ET AL.  
 Tract \_\_\_\_\_ Acres 32 1/2 Lease No. \_\_\_\_\_  
 Well (Farm) No. ONE Serial No. \_\_\_\_\_  
 Elevation (Spirit Level) 863.1 GROUND  
 Quadrangle KENNA NW WC  
 County JACKSON District RIPLEY  
 Engineer Robert S. Hyde  
 Engineer's Registration No. 646  
 File No. \_\_\_\_\_ Drawing No. \_\_\_\_\_  
 Date SEPTEMBER 8, 1941 Scale 1 INCH = 300 FEET

STATE OF WEST VIRGINIA  
 DEPARTMENT OF MINES  
 OIL AND GAS DIVISION  
 CHARLESTON

WELL LOCATION MAP  
 FILE NO. JAC-204

+ Denotes location of well on United States Topographic Maps, scale 1 to 62,500, latitude and longitude lines being represented by border lines as shown.

- Denotes one inch spaces on border line of original tracing.

Imperial Tracing Cloth  
 Deep Well 6-6-192

J D

WEST VIRGINIA DEPARTMENT OF MINES  
OIL & GAS DIVISION  
WELL RECORD

Permit No. Jac-204

Company Fisher Gas Co.  
Address Clendenin, W.Va.  
Farm Marcella Fisher Acres 40  
Location Pocatalico  
Well No --- Elev. 863.1  
District Ripley, Jackson County  
Surface ---  
Mineral H.M. & P. M. Cunningham & Marcella Fisher, Chas., W.Va.  
Commenced Oct. 9, 1941  
Completed Dec. 19, 1941  
Shot No  
Flow 67/10ths Merc. in 7" O. D.  
Rock Pressure 1575 lbs 3 hrs. *~ 13,625 MCF*

Gas Well

Casing & Tubing		
16	16	16
10	938	Pulled
8½	2135	2135
7"	5005	5005
2		5080

Perf. top 6'W/32-½ holes

Casing cemented:  
7" --- 5005', DEC. 13, 1941

Surface	0	5
Red Rock	5	318
Sand	318	340
Red Rock	340	365
Lime	365	375
Slate & Shell	375	415
Sand	415	450
Slate & Shell	450	525
Sand	525	550
Red Rock	550	565
Slate & Shell	565	596
Red Rock	596	608
Slate Shell	608	628
Red Rock	628	675
Slate & Shell	675	710
Lime	710	728
Slate	728	795
Red Rock	795	807
Slate Shell	807	845
Red Rock	845	860
Slate Shell	860	944
Sand	944	990
Slate Shell	990	1116
Sand	1116	1148
Slate Shell	1148	1290
Sand	1290	1375
Slate Shell	1375	1555
- Salt Sand	1555	1925
- Big Lime } 340	1925	2005
Slate	2005	2011
- Sand	2011	2031
Slate Sand	2031	2138
Slate Shell	2138	2465
- Brown Slate	2465	2505
- Borea Grit	2505	2520
Slate Shell	2520	3745
B. Slate	3745	3775
Slate Shell	3775	4165
B. Shale	4165	4315
Slate Shell	4315	4730
B. Shale	4730	4954
- C. Lime - 463	4982	5080
- Oriskany Sand	5080	5102

475