

ABANDONMENT - 2/5/75

Location is S55°E-75' Distant from $\frac{1}{4}$ of Road and N35°45'E-200' Distant from the South Line of the property.

STEVEN DUCKWORTH	
Company	DELONT QUADRANGLE DRILLING CORP.
GASSAWAY, WEST VIRGINIA 26624	
Address	105 MAIN ST., BRADFORD, PENNA.
Farm	S.G. & C.W. STARCHER
Tract	Acres 34 7/8 Lease No. 9949
Well (Farm) No.	1 Serial No. 168
Elevation (Spirit Level)	641.0
Quadrangle	RIPLEY <i>SC</i>
County	JACKSON District WASHINGTON
Engineer	<i>Harvey H. Johnson</i>
Engineer's Registration No.	10654 N.Y.
File No.	Drawing No.
Date	SEPT. 30, 1941. Scale 1 INCH = 330 FEET

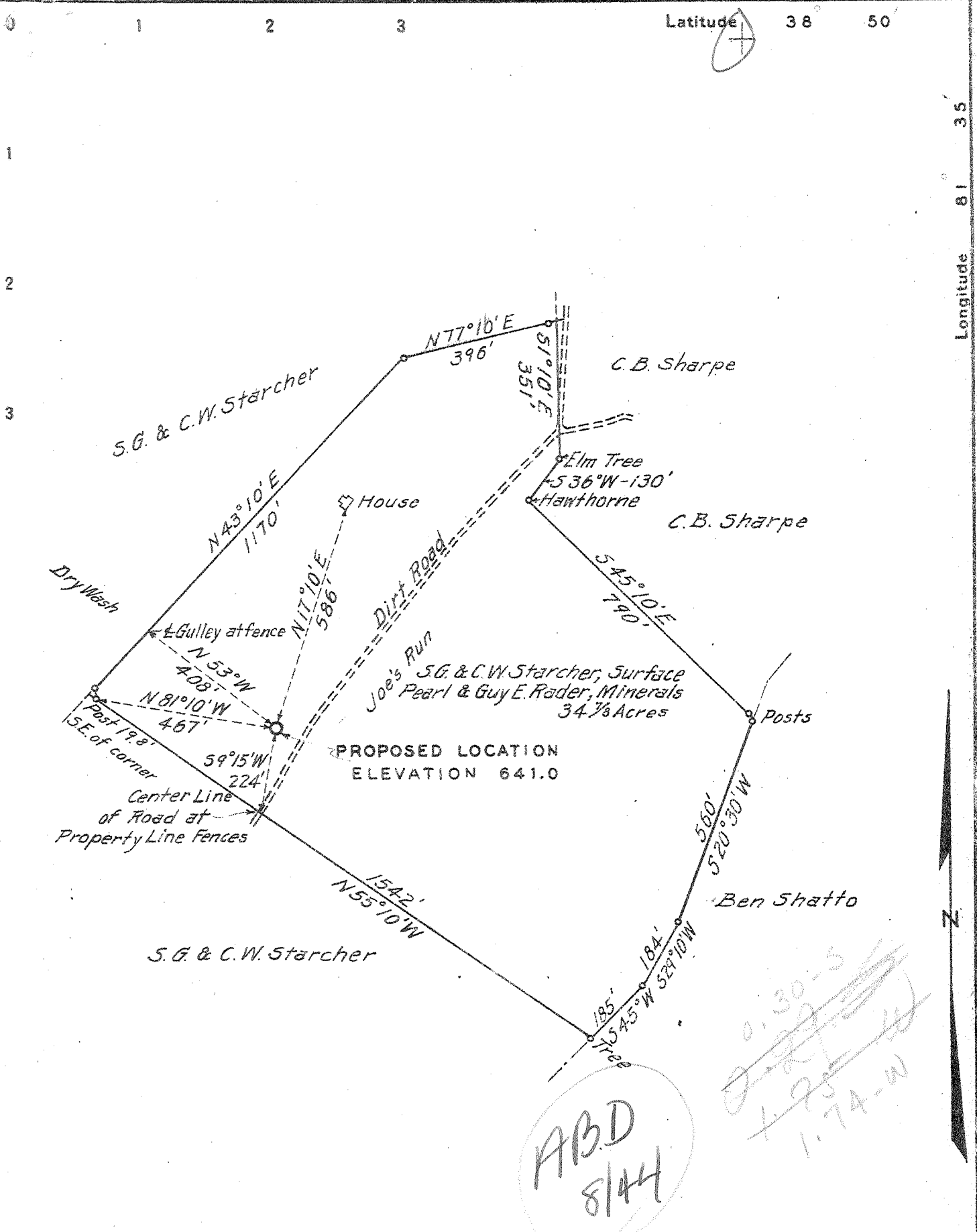
STATE OF WEST VIRGINIA
DEPARTMENT OF MINES
OIL AND GAS DIVISION
CHARLESTON

WELL LOCATION MAP
FILE NO. JAC-223-RED-F

+ Denotes location of well on United States Topographic Maps, scale 1 to 62,500, latitude and longitude lines being represented by border lines as shown.

- Denotes one inch spaces on border line of original tracing.

47-035



Location is $55^{\circ}E-75'$ Distant from $\frac{1}{2}$ of Road and $N35^{\circ}45'E-200'$ Distant from the South Line of the property.

Company	BELMONT QUADRANGLE DRILLING CORP
Address	125 MAIN ST., BRADFORD, PENNA.
Farm	S.G. & C.W. STARCHER
Tract	Acres 34 3/8 Lease No. 9949
Well (Farm) No.	1 Serial No. 168
Elevation (Spirit Level)	641.0
Quadrangle	RIPLEY SC
County	JACKSON District WASHINGTON
Engineer	
Engineer's Registration No.	10654 N.Y.
File No.	Drawing No.
Date	SEPT. 30, 1941. Scale 1 INCH = 330 FEET

STATE OF WEST VIRGINIA
DEPARTMENT OF MINES
OIL AND GAS DIVISION
CHARLESTON

WELL LOCATION MAP
FILE NO. JAC-223

† Denotes location of well on United States Topographic Maps, scale 1 to 62,500, latitude and longitude lines being represented by border lines as shown.

- Denotes one inch spaces on border line of original tracing.

WEST VIRGINIA DEPARTMENT OF MINES
OIL & GAS DIVISION
W E L L R E C O R D

Permit Jac-223			Gas Well
Company	Delmont Quadrangle Drilling Corp.		CASING & TUBING
Address	Box 373 ,Bradford, Pa.	18'	25'6"
Farm	S.G. & C.W. Starcher Acres 34 7/8	16	297'7"
Location	Joe's Run	13	481
Well No	168 Elev. 641.00	10	1099.53
District	Washington Jackson County	8 1/2	1925.97
Surface	S.G. & C.W. Starcher	6 5/8	4918.47
Mineral	Pearl Rador & Guy E. Rador		
	19 E. 13th St., Columbus, Ohio		Casing cemented:
Commenced	Oct. 28, 1941		7" O.D. 286'
Completed	Feb. 4, 1942		
Shot	Feb. 5, 1942	Depth 5080' -20 qts.	
Flow	8/10ths W in 7" O.D.		
Volume	1 hr A.S. 1,200,000 C.F.		
Rock Pressure	1845 lbs 50 hrs.		
Fresh Water	35' 3 blrs. pr. hr.; 200' H.F.		
Salt Water	1200 H. Full; 5026 1/2 blr. in 1 hr. 1/2 blr. in 12 hrs.		

Gravel		0	20	Slate-Shells		1921	2275
Slate	Wh	20	25	Slate	Dk	2275	2285
Red Rock		25	30	Berea Grit		2285	2297
Slate & Sand	Bl	30	161	Slate-Shells	Gr	2297	2785
Lime		161	167	Slate	Wh	2785	3326
Sand		167	200	Slate & Shells		3326	3360
Red Slate		200	208	Slate	Wh	3360	3501
Slate	Bl	208	239	Slate & Shells		3501	3535
Sand		239	252	Shale	Br	3535	3595
Slate	Bl	252	260	Slate & Shells	Gr	3595	3822
Red Rock		260	280	Shale	Br	3822	3867
Slate	Gr	280	292	Shells-Slate	Gr	3867	3889
Lime & Sand		292	305	Slate & Shale	Br	3889	4075
Red Rock		305	334	Lime Shell	Gr	4075	4082
Slate	Wh	334	358	Shale	Br	4082	4147
Red Rock		358	379	Slate	Wh	4147	4510
Sand Pitts.	Wh	379	440	Slate	Dk	4510	4649
Slate	Bl	440	540	Shale	Br	4649	4833
Sand Lime		540	555	Shale	Dk	4833	4878
Slate	Wh	555	590	Corniferous Lime		4878	5003
Red Rock		590	712	Oriskany Sand		5003	5064
Slate	Wh	712	794	Slate		5064	5072
Sand		794	810	Oriskany Sand		5072	5086
Lime Shells		810	815				
Pink Rock		815	835				
Sand		835	871				
Slate		871	912				
Slate	Red	912	930				
Slate	Gr	930	942				
Lime		942	965				
Slate - Sand		965	1098				
Lime		1098	1103				
Slate	Bl	1103	1134				
Gritty Lime	Gr	1134	1140				
Sand	Wh	1140	1160				
Slate	Dk	1160	1200				
Salt Sand	Wh	1200	1278				
Slate	Dk	1278	1360				
Lime		1360	1374				
Slate	Dk	1374	1485				
Lime		1485	1505				
Slate	Bl	1505	1534				
Lime		1534	1565				
2nd Salt Sand		1565	1769				
Dig Lime	Wh	1769	1830				
D. Injun		1830	1896				
Lime	Dk	1896	1921				

Ran 18 bags of aquagol on outside of 8 5/8". 8 5/8" casing set at 1919'

Shale Gas 4780-gauged 4" Water through 1". 23,640 C.F. 238,000 C.F. Gas at 5080'. 50 hr. Well head pressure at 1845# shot with 20 qts nitroglycerine 2-5-42. Open flow 1,200,000 -1 hr. after shot.

4878' top lime

DLM