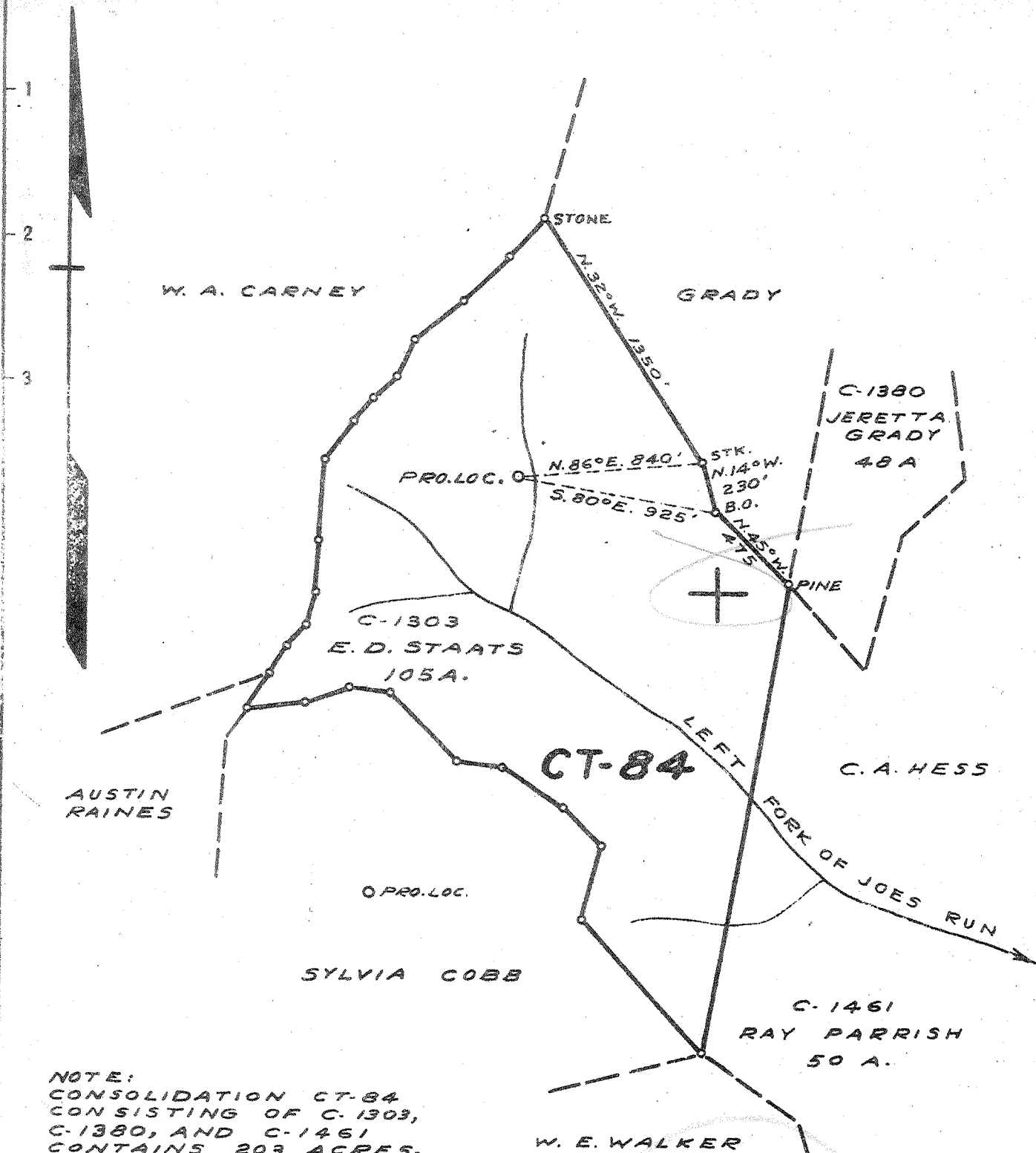


Latitude 38° 55'

Longitude 81° 35'



NOTE:  
 CONSOLIDATION CT-84  
 CONSISTING OF C-1303,  
 C-1380, AND C-1461  
 CONTAINS 203 ACRES.

THIS MAP IS A REVISION OF  
 LOCATION MAP DATED 12-30-41

New Location  X  
 Drill Deeper   
 Abandonment

ABD  
 1/44

4.62-5  
~~4.65-3~~  
~~2.63-6~~  
 2.59-W

LOC. 22 M. N.W. OF HEREFORD

Company	COLUMBIAN CARBON CO.
Address	BOX 1240 CHARLESTON W.VA.
Farm	E. D. STAATS ET AL
Tract	Acres 203 Lease No. CT-84
Well (Farm) No.	ONE Serial No.
Elevation (Spirit Level)	901.0
Quadrangle	RIPLEY SW -5- C
County	JACKSON District WASHINGTON
Engineer	J. M. Sell
Engineer's Registration No.	772
File No.	Drawing No. 18
Date	2-21-42 Scale 1" = 660'

STATE OF WEST VIRGINIA  
 DEPARTMENT OF MINES  
 OIL AND GAS DIVISION  
 CHARLESTON

WELL LOCATION MAP

FILE NO. Jac-290

+ Denotes location of well on United States Topographic Maps, scale 1 to 62,500, latitude and longitude lines being represented by border lines as shown.

- Denotes one inch spaces on border line of original tracing.

WEST VIRGINIA DEPARTMENT OF MINES  
OIL & GAS DIVISION  
W E L L R E C O R D

Permit No. Jac-290		Gas Well
Company	Columbian Carbon Company	CASING & TUBING
Address	Box 873, Charleston, W. Va.	16 43' 43'
Farm	E.D. Staats et al Acres 203	13 3/8 765' 7 0
Location	Left fork of Joes Run	10 1/2 1277' 5 0
Well No.	1 (GW-653) Elev. 904.7 DF	8 5/8 2230' 1 0
District	Washington Jackson County	7 5149' 3 5149' 3
Surface	---	2 3/8 5338' 3 5338' 3
Mineral	---	3 74' 3 74' 3
Commenced	3-31-42	
Completed	7-8-42	
Date Shot	7-8-42 Depth 5226' SLM-5291' SLM	
Volume	450# Gelatin	
Rock Pressure	60 M C F	
Fresh Water	1565 lbs. 12 days	
Salt Water	703-20 5-15" blrs. pr. hr.	
	1520' 4-10" blrs. pr. hr.	
	1922' Hole Full	

Grey Mud	0	39	Slate	2224	2223
Red Rock	39	60	Lime	2228	2233
Blue Slate	60	65	Slate & Shells	2233	2560
Red Rock	65	140	Brown Slate	2560	2572
Sand	140	150	Berea	2572	2585
Red Rock	150	210	Slate & Shells	2585	4070
Lime	210	250	Dark Shale	4070	4100
White Slate	250	280	Brown Shale	4100	4200
Red Rock	280	365	White Slate	4200	4220
Blue Slate	365	438	Brown Shale	4220	4320
White Slate	438	450	White Slate	4320	4350
Broken Lime	450	490	Brown Shale	4350	5083
Red Rock	490	520	Black Shale - MARCELLUS	5083	5103 SLM
White Slate	520	621	Corniferous Lime - 463	5103 SLM	5225 SLM
Black Lime	621	640	Criskany Sand	5225 SLM	5293
Slate	640	675	Black Lime	5293	5303
Red Rock	675	702	Criskany Sand, blue	5303	5319
Water Sand	702	720	Black Lime	5319	5333 SLM
Sand	720	757	TOTAL DEPTH		5333 SLM
White Slate	757	770			
Slate & Shells	770	789	PAYS: 5226-46; 5282-87		
Red Rock	789	794			
Blue Slate	794	875	CEMENT RECORD: 4-10-42 Aquagelled 13 3/8"		
Red Rock	875	945	casing. Ran 21 sacks Aquagel and 1 bale		
Blue Slate	945	965	Fibrotex.		
Red Rock	965	1006			
White Slate	1006	1050	4-13-42 Aquagelled 10 1/2" casing. Ran 24		
Black Slate	1050	1070	sacks aquagel and 1 bale Fibrotex.		
Lime	1070	1090			
Slate & Shells	1090	1170	5-5-42 Aquagelled 8 5/8" casing. Ran 27		
Blue Slate	1170	1205	sacks aquagel and 1 bale Fibrotex.		
Dunkard Sand	1205	1227			
Blue Slate	1227	1250	6-19-42 Cemented 7" casing. Ran 12 sacks		
Slate & Shells	1250	1410	Superior cement. Picked pipe up 60'		
Sand	1410	1502	off bottom and ran 35 sacks aquagel and		
Dark Lime	1502	1514	4 bales Fibrotex. 85' cement and		
Sand	1514	1563	cavings in hole-cement soft.		
White Slate	1563	1605			
Black Slate	1605	1665			
Sand	1665	1710			
Lime	1710	1795			
Black Slate	1795	1840			
Lime	1840	1852			
Maxon Sand	1852	1950			
Slate	1950	1953			
Lime	1953	1974			
Sand	1974	1985			
Slate	1985	1996			
Big Lime	1996	2134			
Slate & Shells	2134	2154			
Big Injun Sand	2154	2188			
Slate	2188	2191			
Sand	2191	2224			