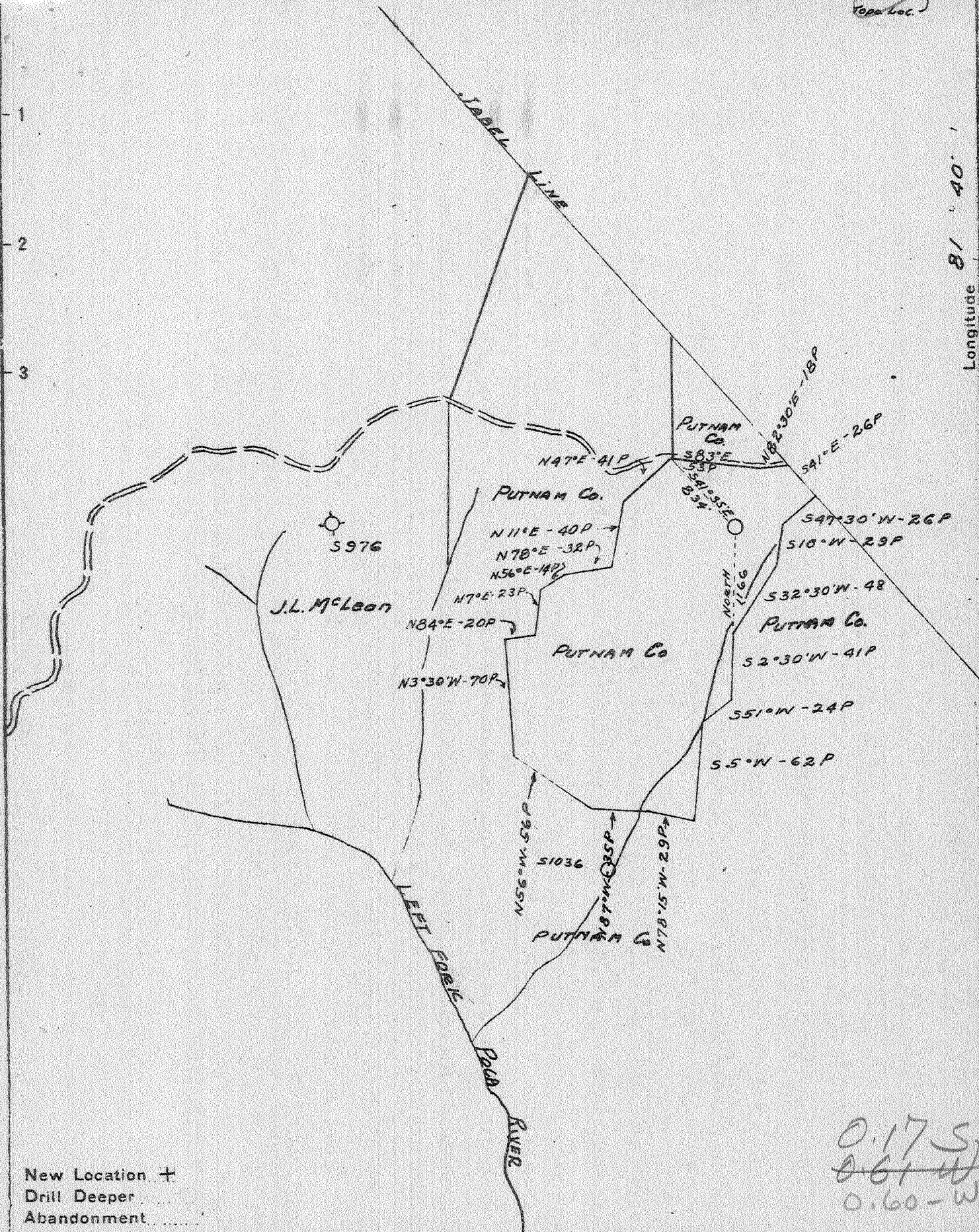


Latitude 38° 40'

Top Loc. +

Longitude 81° 40'



New Location +
 Drill Deeper
 Abandonment

0.17 S
 0.61 W
 0.60 - W

Company Godfrey L Cabot Inc.
 Address 900 Union Bldg Charleston W.Va.
 Farm The Putnam Co
 Part of 22000 AC
 Tract _____ Acres _____ Lease No. 3-464
 Well (Farm) No. 26 Serial No. 1040
 Elevation (Spirit Level) 986.34
 Quadrangle Kenna
 County Jackson District Ripley
 Engineer Roy Boston
 Engineer's Registration No. _____
 File No. _____ Drawing No. _____
 Date 4-6-42 Scale 1" = 1320'

STATE OF WEST VIRGINIA
 DEPARTMENT OF MINES
 OIL AND GAS DIVISION
 CHARLESTON

WELL LOCATION MAP
 FILE NO. JAC-328

+ Denotes location of well on United States Topographic Maps, scale 1 to 62,500, latitude and longitude lines being represented by border lines as shown.
 - Denotes one inch spaces on border line of original tracing.

650-192

WEST VIRGINIA DEPARTMENT OF MINES
OIL & GAS DIVISION
W E L L R E C O R D

Permit No. Jac 328
Kenna Quad.

Dry Hole
CASING & TUBING

Company	Godfrey L. Cabot, Inc.				
Address	Charleston, W.Va.		13 3/8	522	-
Farm	The Putnam Company	Acres --	10 1/2	1124	1124
Location	--		8 5/8	2252	2252
Well No	26- Ser. 1040	Elev. 986	7	5184	5184
District	Ripley	Jackson County	2"	5353	5353
Surface					Bottom joint welded

Commenced	May 27, 1942				10 1/2 x 15" casing shoe
Completed	Oct. 12, 1942				85/8" Spang R.H.Packer;
Date shot	10-13-42	Depth 5270 to 5280 with 40 qts. 25 bags aquagel.			
Volume	B.S. 60 M	40 Mins A.S. 189 M			7" Spec. Orisk.
Salt Water	1385	1/4 Bailer an hr.; 1745 Water leve 450)			R.H.Packer
		Tubed and shut in 10-28-42; Perf. top			40 sacks aquagel.
					5286 - 5294; 5347-5353

Soil	0	11	Sand	1608	1642
Sand	11	16	Slate	1642	1700
Red Rock	16	40	Salt Sand	1700	2059
Sand	40	50	Slate	2059	2062
Red Rock	50	75	Sand	2062	2078
Sand	75	120	Big Lime	2078	2164
Red Rock	120	150	Slate	2154	2166
Lime Shells	150	170	Injun Sand	2166	2268
Red Rock	170	195	Slate	2268	2331
Sand	195	240	Sandy Lime	2231	2236
Red Rock	240	315	Slate	2236	2248
Slate & Shells	315	340	Lime Shells	2248	2290
Red Rock	340	385	Slate & Shells	2290	2630
Slate & Shells	385	395	Dark Shale	2630	2642
Sand	395	410	Berea Grit	2642	2657
Red Rock	410	515	Slate & Shells	2657	3200
Slate & Shells	515	545	Blue Shale	3200	3380
Lime	545	558	Brown Shale-441?	3380	3420
Red Rock	558	585	Blue Shale	3420	3590
Slate	585	595	Brown Shale-441?	3590	3710
Red Rock	595	612	Slate & Shells	3710	3900
Slate & Shells	612	625	Brown Shale	3900	3950
Red Rock	625	650	Slate & Shells	3950	4260
Slate	650	670	Brown Shale	4260	4290
Lime	670	680	White Slate	4290	4320
Slate & Shells	680	715	Brown Shale	4320	4500
Red Rock	715	730	White Slate	4500	4900
Sand	730	750	Brown Shale	4900	5121
Red Rock	750	760	Black Slate MARCELLUS	5121	5164
Sand	760	782	Corniferous Lime	5164	5267
Slate & Shells	782	805	Oriskany Sand	5267	5314
Red Rock	805	815	Lime	5314	5320
Sand	815	842	Sand	5320	5341
Red Rock	842	900	Lime	5341	5357 T.D.
Sand	900	928	TOTAL DEPTH	483	5357 SLM
Lime	928	948	Gas 4320-33 Show; Gas 4425-27 Show		
Slate & Shells	948	985			
Red Rock	985	996			
Lime	996	1017	GAUGES IN ORISKANY SAND D.S.		
Pink Rock	1017	1027	5271 60 M		
Slate & Shells	1027	1088	5275-76 119 M		
Pink Rock	1088	1100	5279-5301 94 M		
Slate & Shells	1100	1114	5322 84 M		
Sand	1114	1130	5333-57 60 M		
Slate & Shells	1130	1182	GAUGES IN ORISKANY A.S.		
Sand	1182	1280	Gauge R.S. 60 M		
Slate	1280	1316	5 Mins. A.S. 335 M		
Sand	1316	1350	10 " " 304 M		
Slate	1350	1380	15 " " 273 M		
Sand	1380	1410	20 " " 273 M		
Slate	1410	1415	40 " " 189 M		
Sand	1415	1460			
Slate & Shells	1460	1490			
Sand	1490	1568			
Slate	1568	1608			