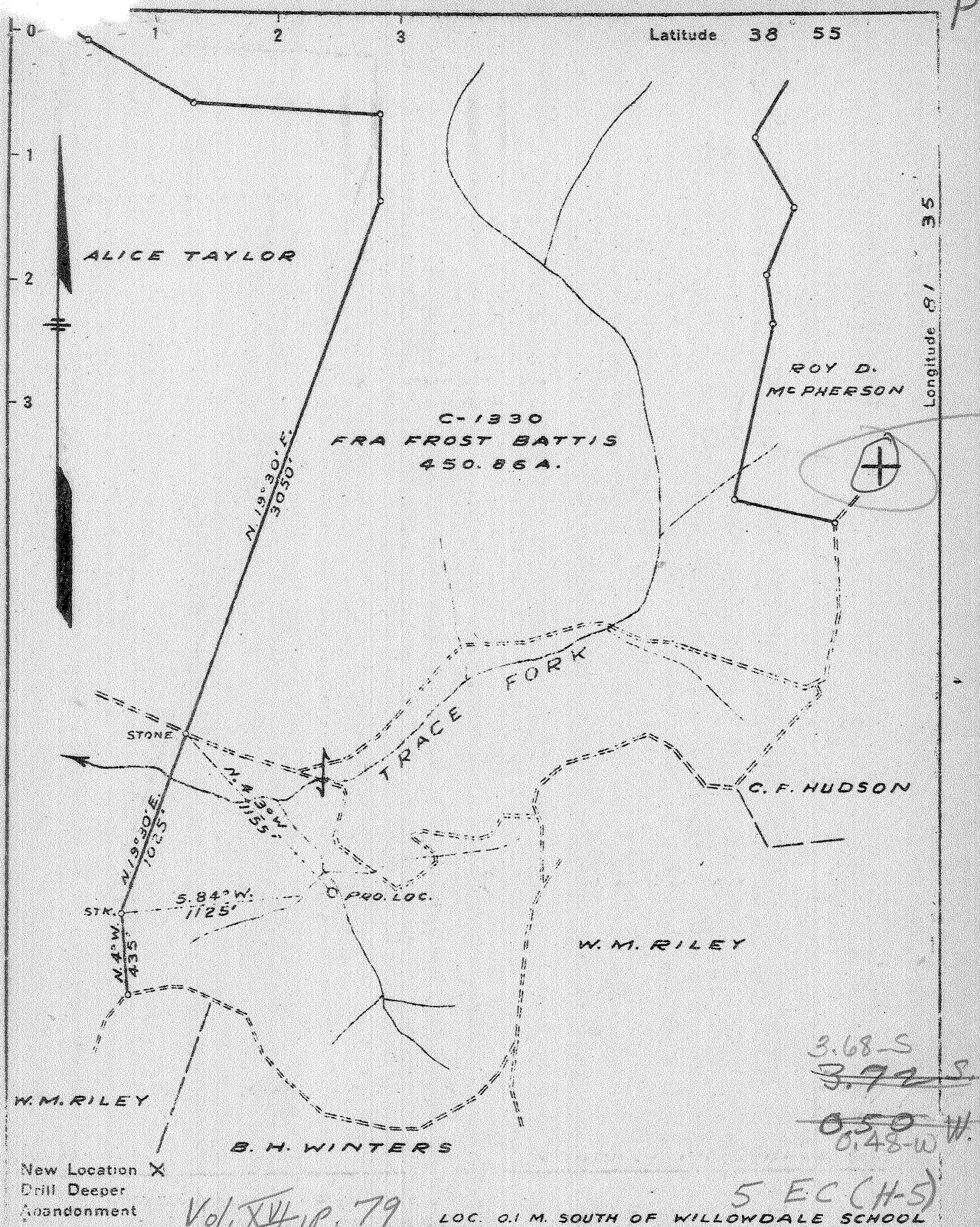


P



New Location X  
 Drill Deeper  
 Abandonment

Vol. XIV, p. 79

LOC. 0.1 M. SOUTH OF WILLOWDALE SCHOOL  
 5 EC (H-5)

Company COLUMBIAN CARBON CO.  
 Address BOX 1240 CHARLESTON W.VA.  
 Farm FRA FROST BATTIS  
 Tract Acres 450.86 Lease No. C-1330  
 Well Farm No. ONE Serial No. \_\_\_\_\_  
 Elevation (Spirit Level) 783.5  
 Quadrangle RIPLEY SE-S-C  
 County JACKSON District RAYENSWOOD  
 Engineer J. N. Sell  
 Engineer's Registration No. 772  
 File No. \_\_\_\_\_ Drawing No. 27  
 Date 4-7-42 Scale 1" = 660'

STATE OF WEST VIRGINIA  
 DEPARTMENT OF MINES  
 OIL AND GAS DIVISION  
 CHARLESTON

WELL LOCATION MAP  
 FILE NO. JAC-332

+ Denotes location of well on United States Topographic Maps, scale 1 to 62,500, latitude and longitude lines being represented by border lines as shown.  
 - Denotes one inch spaces on border line of original tracing.

5-0 192

Deep Well

WEST VIRGINIA DEPARTMENT OF MINES  
OIL & GAS DIVISION  
W E L L R E C O R D

Permit No. Jac 332					Non-Productive Well
Ripley Quad S.E.					CASING & TUBING
Company	Columbian Carbon Co.				
Address	Box 1240, Charleston, W.Va.	16	42'10"	21'5"	
Farm	Fra. Frost Battis Acres 450.86	13 3/8	691'5"	0	
Location	Trace Fork & Sand Creek	10 3/4	1321'4"	0	
Well No	1 (GW-669) Elev. 783.5 G	8 5/8	2077'7"	0	
District	Ravenswood Jackson County	7	5114'7"		
Surface	---				
Mineral	---				
Commenced	4-28-42				
Completed	7-16-42				
Volume	Non-Productive				
Fresh Water	550-600' 4 1/2" -15 1/2" blrs./hr.; 680' 6-15 1/2" blrs./hr.				
Salt Water	1045 1/2"-12 1/2" blr./hr.; 1735 H.F.; 5238 Filled up 1500'				

Soil	0	12	Sand	1570	1590
Red Rock	12	38	White Slate	1590	1610
Lime	38	44	Black Slate & Shells	1610	1685
Red Rock	44	80	Slate & Sand Shells	1685	1728
White Slate	80	90	Sand	1728	1850
Red Rock	90	108	Big Lime	1859	1972
White Slate	108	162	Big Injun Sand	1972	2022
Red Rock	163	172	White Slate	2022	2028
Slate	172	197	Sand	2028	2046
Red Rock	197	252	White Slate	2046	2048
White Slate	252	270	Sand	2048	2056
Blue Lime	270	290	Slate & Shells	2056	2071
Sand	290	305	Black Lime	2071	2087
Blue Slate	305 1/2	328	Slate	2087	2182
Sand	328	348	Lime	2182	2228
Blue Slate	348	368	Slate & Shells	2228	2423
Sand	368	386	Brown Shale	2423	2439
White Slate	386	393	Berea	2439	2447
Lime	393	410	Slate & Shells	2447	3250
Red Rock	410	432	White Slate	3250	3675
Slate	432	483	Brown Lime	3675	3725
Red Rock	483	505	Brown Shale - 441	3725	3780
White Slate	505	520	Slate & Shells	3780	3968
Red Rock	520	538	Brown Shale	3968	4085
Sand	538	608	Slate & Shells	4085	4175
White Slate	608	660	Brown Shale	4175	4300
Sand	660	700	White Slate	4300	4740
White Slate	700	708	Brown Shale	4740	4865
Lime	708	714	White Slate	4865	4890
Slate & Shells	714	788	Brown Shale	4890	4990
Red Rock	788	796	Black Shale - MARCELLUS	4990	5066 SLM
Slate & Shells	796	912	Corniferous Lime - 443	5066 SLM	5200 SLM
Coal	912	917	Criskany Sand	5200 SLM	5250
Slate & Shells	917	930			
Red Rock	930	948	Show oil 1665'		
Slate & Shells	948	1015	Show gas 3685'		
Sand	1015	1060			
White Slate	1060	1138	CEMENT RECORD: 5-9-42 Aquagelled 13 3/8"		
Sand	1138	1163	casing. Ran 21 sacks aquagel and 1 sack		
Slate & Shells	1163	1287	Fibrotex.		
Sand	1287	1306	5-16-42 Aquagelled 10 3/4" casing. Ran 25		
White Slate	1306	1326	sacks aquagel and 1 sack Fibrotex.		
Lime	1326	1335	5-30-42 Aquagelled 8 5/8" casing. Ran		
Sand	1335	1372	23 sacks aquagel and 1 sack Fibrotex.		
Black Slate	1372	1384	7-3-42 Cemented 7" casing. Dumped 12		
Sand	1384	1427	sacks Superior cement on bottom. Ran 50		
Black Slate	1427	1437	sacks aquagel and 4 sacks Fibrotex.		
Sand	1437	1455			
Black Slate & Shells	1455	1493			
Sand	1493	1510			
Black Slate	1510	1525			
Sand	1525	1555			
White Slate	1555	1570			

5066    5200  
 784    784  
 -----  
 4282    4416