

New Location
 Drill Deeper
 Abandonment issued 2/21/75

Columbia Gas Transmission Corp.
 Company (UNITED FUEL GAS CO.)
 Address CHARLESTON, W.VA.
 Farm D. C. SHAMBLLEN ET AL
 Tract _____ Acres 240 Lease No. 40988
 Well (Farm) No. 1 Serial No. 5116
 Elevation (Spirit Level) _____
 Quadrangle KENNA NW
 County JACKSON District RIPLEY
 Engineer G.A. Cunningham
 Engineer's Registration No. 659
 File No. 58-83 Drawing No. _____
 Date MAY 12, 1942 Scale 1" = 660'

STATE OF WEST VIRGINIA
 DEPARTMENT OF MINES
 OIL AND GAS DIVISION
 CHARLESTON

WELL LOCATION MAP
 FILE NO. JAC-348-P

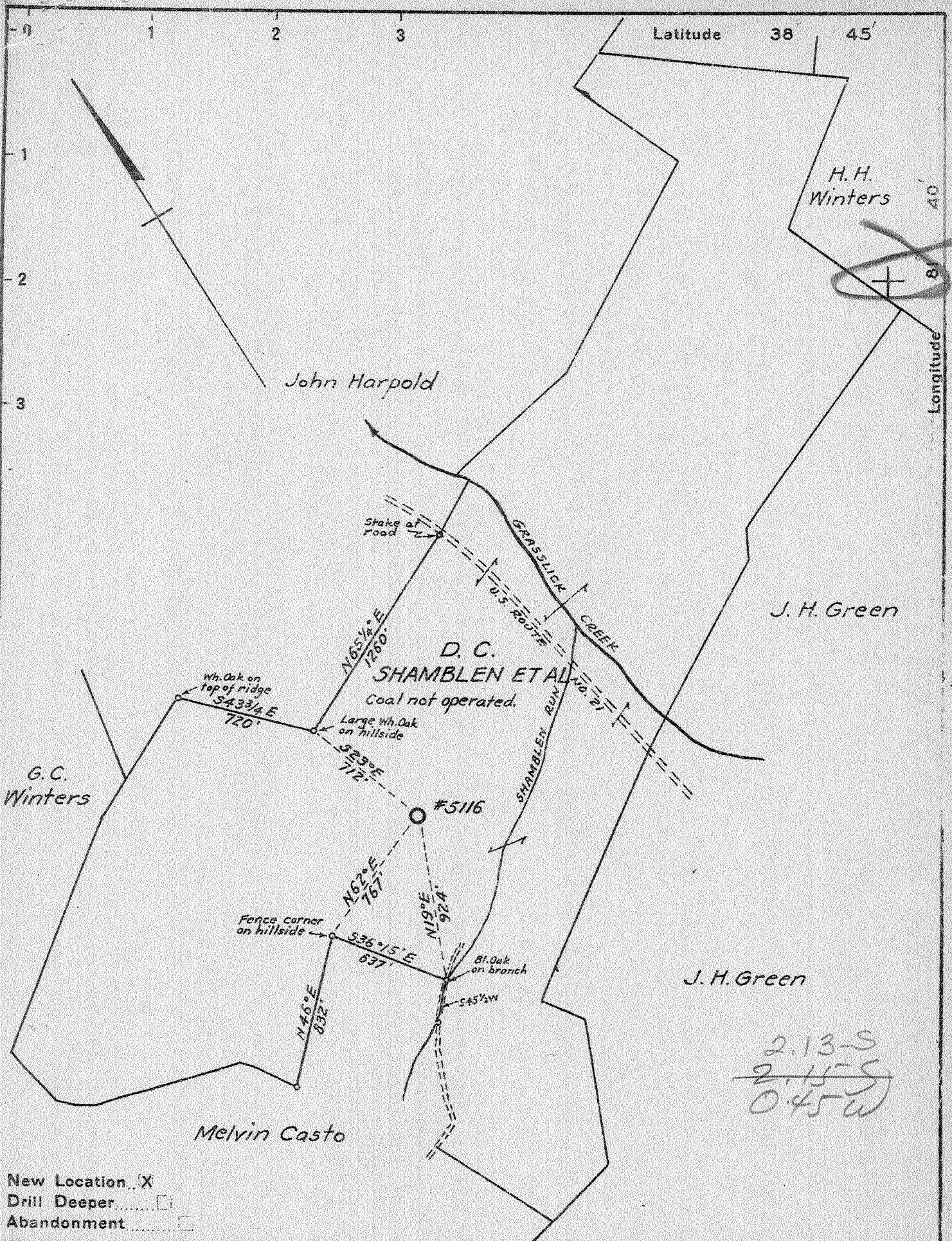
+ Denotes location of well on United States Topographic Maps, scale 1 to 62,500, latitude and longitude lines being represented by border lines as shown.

- Denotes one inch spaces on border line of original tracing.

47-035 MAR 3 1975

Orisk. Deep well

"IMPERIAL" TRACING CLOTH
 K & E CO., N. Y.



New Location X
 Drill Deeper
 Abandonment

Company UNITED FUEL GAS CO.
 Address CHARLESTON, W.VA.
 Farm D. C. SHAMBLLEN ET AL
 Tract Acres 240 Lease No. 40988
 Well (Farm) No. 1 Serial No. 5116
 Elevation (Spirit Level) 783.22
 Quadrangle KENNA
 County JACKSON District RIPLEY
 Engineer G.A. Cunningham
 Engineer's Registration No. 659
 File No. 58-83 Drawing No.
 Date MAY 12, 1942 Scale 1" = 660'

STATE OF WEST VIRGINIA
 DEPARTMENT OF MINES
 OIL AND GAS DIVISION
 CHARLESTON

WELL LOCATION MAP
 FILE NO. JAC-348

+ Denotes location of well on United States Topographic Maps, scale 1 to 62,500, latitude and longitude lines being represented by border lines as shown.
 - Denotes one inch spaces on border line of original tracing.

6-6-1942

WEST VIRGINIA DEPARTMENT OF MINES
OIL & GAS DIVISION
W E L L R E C O R D

Permit No. Jac 348				
Kenna Quad.				Gas Well
Company	United Fuel Gas Company			CASING & TUBING
Address	Box 1273 Charleston, W.Va.	13 5/8	648	648
Farm	D.C. Shamblen et al Acres 240	10 1/2	1179	1179
Location	Grasslick Creek	85/8	2052	2052
Well No	5116 Elev. 783. 22	7	4957	4957
District	<u>Ripley</u> <u>Jackson County</u>			
Surface	D. C. Shamblen et al, Fairplain, W.Va.			
Mineral	Same			
Commenced	June 10, 1942			
Completed	Nov. 10, 1942			
Volume	Gas Well 4726 mcf Vol XVI			
Rock Pressure	1590 lbs. 48 hrs.			
Salt Water	1700			

Surface	0	15	
Red Rock	15	45	
Slate	45	60	
Lime	60	90	
Sand	90	102	
Slate	102	132	
Sand	132	195	
Slate	195	210	
Red Rock	210	235	
Sand	235	265	
Red Rock	265	310	
Sand	310	320	
Lime	320	335	
Slate	335	400	
Red Rock	400	430	
Slate	430	570	
Sand	570	643	
Lime	643	680	
Sand	680	690	
Red Rock	690	720	
Slate	720	740	
Red Rock	740	765	
Slate	765	825	
Sand	825	845	
Slate	845	875	
Sand	875	900	
Red Rock	900	990	
Slate	990	1062	
Sand	1062	1131	
Slate	1131	1254	
Sand	1254	1360	
Slate	1360	1400	
Sand	1400	1420	
Slate	1420	1460	
Sand	1460	1520	
Slate	1520	1580	
Sand (Silt Sand + Ripline + Injunct)	1580	2045	Water 1700' H. F.
Slate & Shells	2045	2400	
Berea	2400	2415	
Slate & Shells	2415	3615	Gas 2405
Brown Shale - 44	3615	3675	
Slate & Shells	3675	3885	
Brown Shale	3885	4045	
White Slate	4045	4075	
Brown Shale	4075	4230	Gas 4080'
White Slate	4230	4600	
Brown Shale	4600	4943	
Corniferous Lime - 463	4943	5041	
Oriskany	5041	5051	
TOTAL DEPTH		5051	Gas 5042 to 5049'

(475)