

Latitude 38° 50'

Longitude 81° 35'

NO. 1
HOPE NO. 8585

H. F. PFOST HEIRS

E. H. CARPENTER ET AL.

160 A.

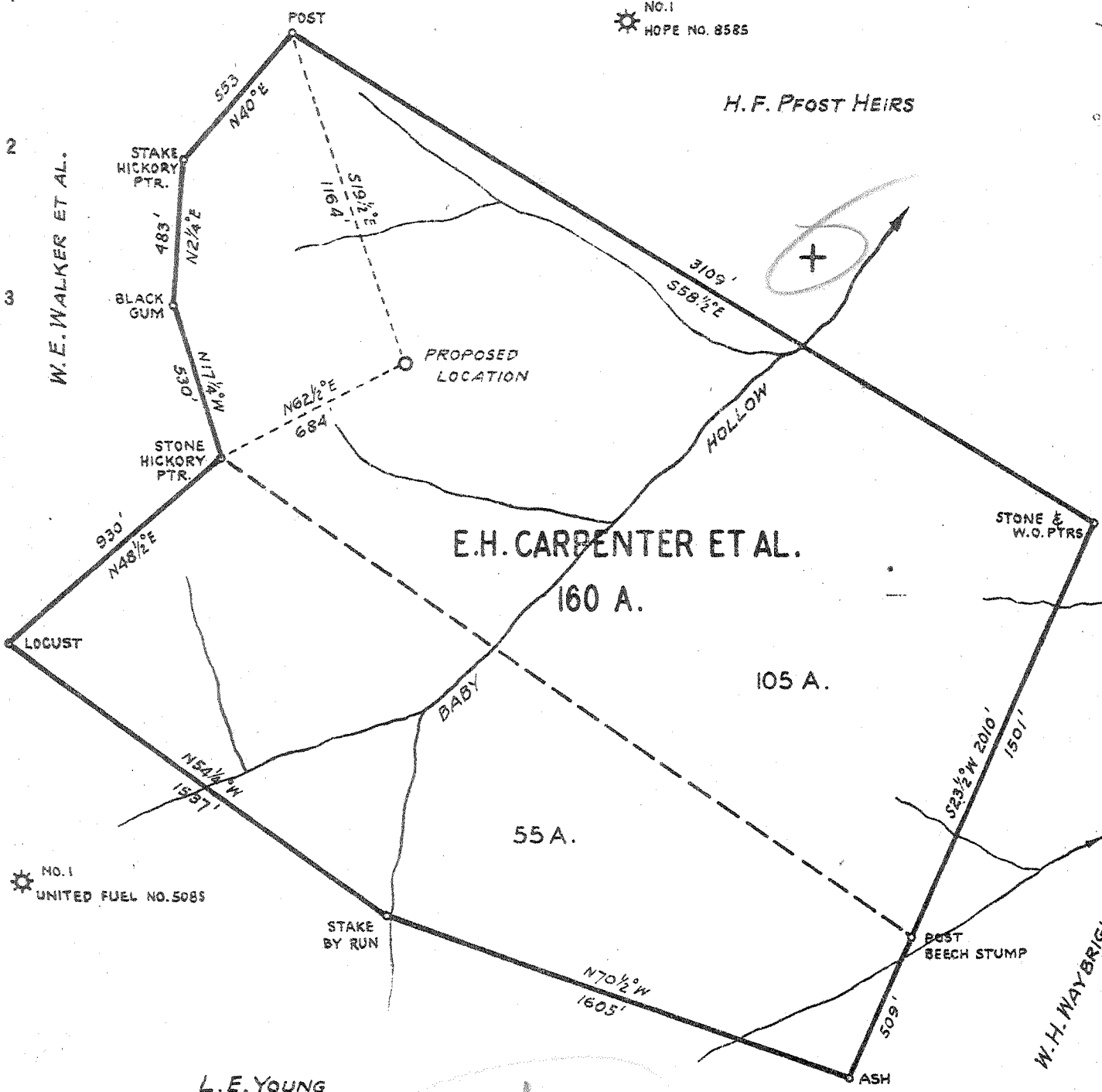
105 A.

55 A.

L. E. YOUNG

*Abandoned
July 48*

*2.88-S
2.92-S
2.11-W
2.08-W*



NO. 1
UNITED FUEL NO. 5085

- New Location
- Drill Deeper
- Abandonment

Company SPARTAN GAS COMPANY
 Address 518 KANAWHA VALLEY BLDG., CHARLESTON, W.VA.
 Farm E. H. CARPENTER ET AL.
 Tract _____ Acres 160 Lease No. _____
 Well (Farm) No. ONE Serial No. S-35
 Elevation (Spirit Level) 938.0 GROUND
 Quadrangle RIPLEY SE
 County JACKSON District WASHINGTON
 Engineer Robert S. Hyde
 Engineer's Registration No. 646
 File No. _____ Drawing No. _____
 Date JUNE 15, 1942 Scale 1 INCH = 500 FEET

STATE OF WEST VIRGINIA
 DEPARTMENT OF MINES
 OIL AND GAS DIVISION
 CHARLESTON

WELL LOCATION MAP

FILE NO. JAC-372

+ Denotes location of well on United States Topographic Maps, scale 1 to 62,500, latitude and longitude lines being represented by border lines as shown.

- Denotes one inch spaces on border line of original tracing.

WEST VIRGINIA DEPARTMENT OF MINES
OIL & GAS DIVISION
W E L L R E C O R D

Permit No. Jac 372
Ripley Quad.
Company
Address
Farm
Location
Well No
District
Surface

Mineral

Commenced
Completed
Not shot
Open flow
Volume
Fresh Water
Salt Water

Spartan Gas Company
518 K.V. Bldg. Chas., W.Va.
E.H. Carpenter Acres 160
Elk Fork of Mill Creek
1 Elev. 940 LDF
Washington Jackson County
E.H. Carpenter, and others
Letart Falls, Ohio
E.H. Carpenter and others
Letart Falls, Ohio
July 22, 1942
Nov. 5, 1942

12/10ths M in 7" 22#
5,517,000 C.F.
190'
1495'

Gas Well
CASING & TUBING

18" 21'
13 3/8 822' Pulled
10 1/2 1299' 3 Pulled
8 5/8 5189'
2 5289'

15 bags cement behind
7" casing.
18 bags aquagel behind
8 5/8" casing.

Surface	0	8	Lime Shell	2212	2232
Red Rock	8	200	Slate & Shells	2232	2580
White Slate	200	210	Sereia Formation	2580	2586
Red Rock	210	300	Slate & Shells	2596	3134
Lime	300	305	Slate	3134	3950
White Slate	305	325	Slate & Shells	3950	4150
Red Rock	325	345	Brown Shale	4150	4468
White Slate	345	350	Slate	4468	4780
Sand	350	410	Black Slate	4780	4900
Slate	410	420	Brown Shale	4900	5177
Sand	420	470	Corniferous Lime - 463	5177	5294
White Slate	470	510	Oriskany Sand	5294	5304
Red Rock	510	530			
Sand	530	570	Gas 5295-5304		
Red Rock	570	590			
Lime	590	600	TOTAL DEPTH		5304
White Slate	600	615	475		
Shells	615	650			
Sand	650	700			
Hard Slate	700	790			
Sand	790	820			
Slate	820	850			
Red Rock	850	900			
Slate & Shells	900	940			
Red Rock	940	975			
Hard Slate	975	1050			
White Slate	1050	1235			
Sand	1235	1255			
Pink Rock	1255	1285			
Dunkard Sand Big	1285	1380			
White Slate	1380	1395			
Sand	1395	1450			
Slate	1450	1470			
Sand	1470	1500	HFV 1495		
Slate	1500	1505			
Sand	1505	1550			
Slate	1550	1800			
Lime	1800	1810			
Slate	1810	1867			
Sand	1867	2025			
Big Lime	2025	2145			
Injun Sand	2145	2212			