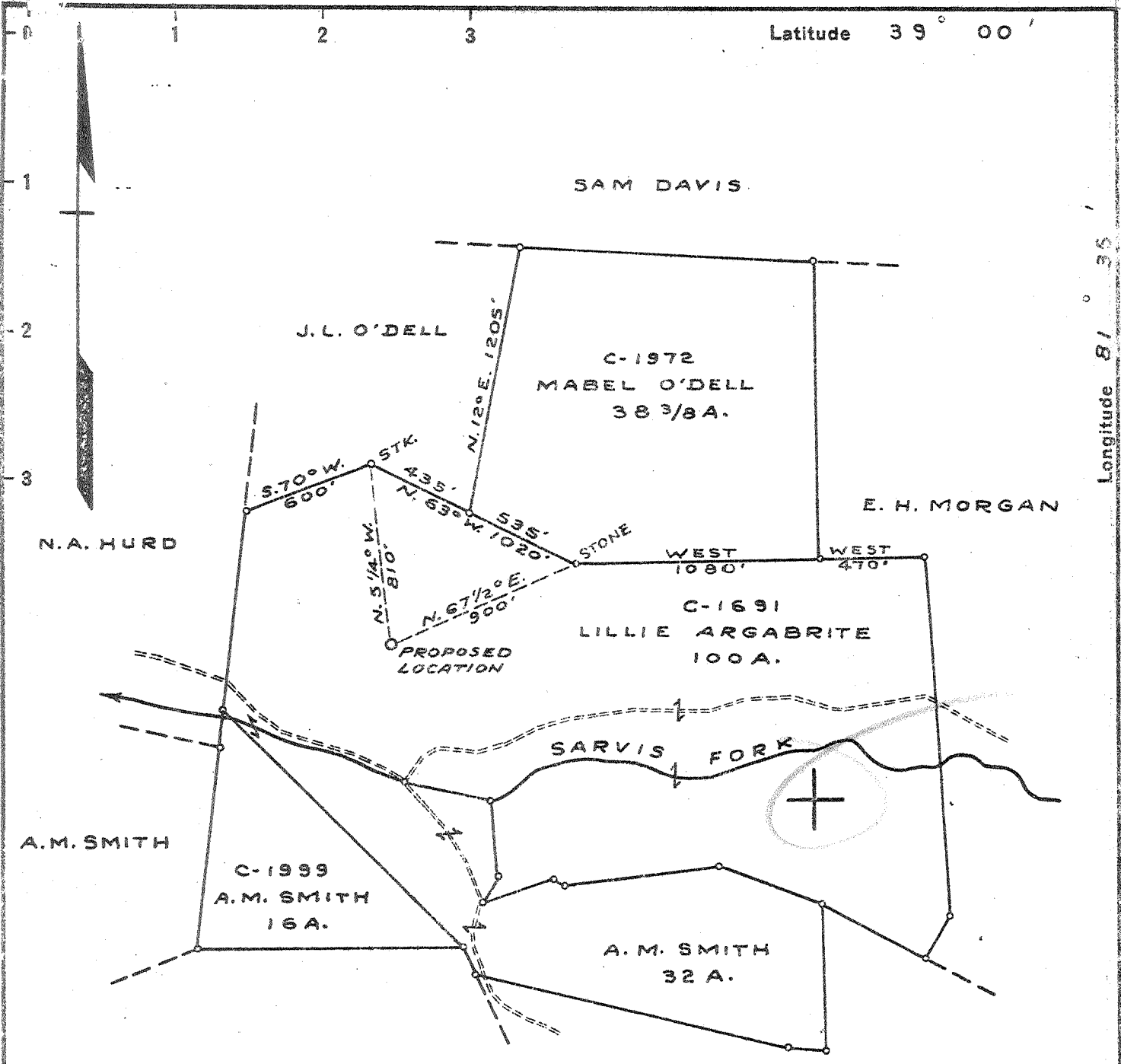


P



THIS MAP REPLACES
MAP DATED 7-22-42

- New Location
- Drill Deeper
- Abandonment

Vol. XVII, p. 78

LOC. 1.3 M. S.E. OF ODAVILLE

5.33-5
~~5.33-5~~
~~2.05-5~~
2.04-W

Company COLUMBIAN CARBON CO.

Address BOX 873 CHARLESTON W.VA.

Farm LILLIE ARGABRITE

Tract _____ Acres 186 3/8 Lease No. CT-107

Well (Farm) No. ONE Serial No. _____

Elevation (Spirit Level) 707.8

Quadrangle RIPLEY N.E. -2- NC

County JACKSON District RAVENSWOOD

Engineer [Signature]

Engineer's Registration No. 772

File No. _____ Drawing No. 197

Date NOV. 25, 1942 Scale 1" = 660'

STATE OF WEST VIRGINIA
DEPARTMENT OF MINES
OIL AND GAS DIVISION
CHARLESTON

WELL LOCATION MAP
FILE NO. JAC-387-R

- + Denotes location of well on United States Topographic Maps, scale 1 to 62,500, latitude and longitude lines being represented by border lines as shown.
- Denotes one inch spaces on border line of original tracing.

6-6-1942 Deep Well ✓

WEST VIRGINIA DEPARTMENT OF MINES
OIL & GAS DIVISION
W E L L R E C O R D

Permit No. Jac 387-R
Ripley Quad. N.E.

Company	Columbian Carbon Company	16	56'5	56'5
Address	Box 873, Charleston, W.Va.	13 3/8	678'8	0
Farm	Lillie Argabrite Acres 186.3/8	10 1/2	1184'3	
Location	Sarvis Fork	8 5/8	2066'11	
Well No	1 (GW-709) Elev. 711. D.F.	6 5/8	4969'11	Same
District	Ravenswood Jackson County	2 3/8	5087	Same
Surface	Lillie Argabrite et al, Sandyville, W.Va.			
Mineral	-	3 1/2	84'4	Same
Commenced	2-17-43			
Completed	5-17-43			
Date shot	5-17-43			
Volume	Depth 5046 to 5091 with 300# Gelatin			
Rock Pressure	1,220 MCF			
Fresh Water	610 lbs. 14 hrs.			
Salt Water	600' 6-14" Blrs. /hr.; 1140 1-12 Blr. /hr.			
	1350' 1-9" Blr./hr.; 1740' H.F.			

Red Mud	0	25	Oriskany Sand	SLM	5046	5098 SLM
Blue Slate	25	60	TOTAL DEPTH			5093 SLM
Red Rock	60	80				
Blue Slate	80	125	Oil 5063 Show			
Red Rock	125	234				
Slate	234	254	PAYS: 5049-53; 5059-61; 5068-71; 5086-88			
Red Rock	254	305				
Sand	305	320	CEMENT RECORD:			
Red Rock	320	390				
Blue Slate	390	417	3-1-43 Aquagelled 13 3/8" casing. Ran			
Red Rock	417	438	17 sacks aquagel mixed with 1 bale			
Slate	438	495	Fibrotex. Returns 500'.			
Red Rock	495	515				
Blue Slate	515	540	3-8-43 Aquagelled 10 1/2" casing. Ran 21			
Sand - <i>1 1/2 #s sand?</i>	540	620	sacks aquagel mixed with 1 bale			
Slate	620	740	Fibrotex. Returns 880'.			
Red Rock	740	761				
Slate	761	821	3-24-Re Aquagelled 8 5/8" casing.			
Red Rock	821	839	Ran 25 sacks aquagel mixed with 1			
Slate	839	856	bale Fibrotex. Returns 1672'.			
Sand	856	862				
Slate	862	915	4-19-43 Cemented 6 5/8" casing. Ran 60			
Shell	915	925	sacks aquagel mixed with 4 bales			
Red Rock	925	950	Fibrotex. Ran 4 sacks Superior cement			
Slate	950	1110	with dump bailer. 12' hard cement			
Sand	1110	1156	after setting.			
Slate	1156	1166				
Sand	1166	1192				
Slate	1192	1200				
Lime	1200	1227				
Slate	1227	1239				
Lime	1239	1247				
Sand	1247	1400				
Slate	1400	1460				
Lime	1460	1489				
Sand	1489	1537				
Slate	1537	1558				
Sand	1558	1600				
Slate Shells	1600	1683				
Sand - <i>Salt Sand?</i>	1683	1771				
Big Lime	1771	1905				
Sand - <i>Injun</i>	1905	1986				
Slate	1986	1994	SLM			
Lime	1994	SLM 2068				
Slate & Shells	2068	2360				
Brown Shale - <i>Copper Sh.</i>	2360	2377				
Lime Shell	2377	2630				
Slate & Shells	2630	3600				
Brown Shale - <i>441</i>	3600	3735				
Slate & Shells	3735	3910				
Brown Shale	3910	4155				
White Slate	4155	4594	Gas 4343 Light Show			
Brown Shale	4594	4927	SLM			
Corniferous Lime - <i>463</i>	4927	SLM 5046	SLM			