

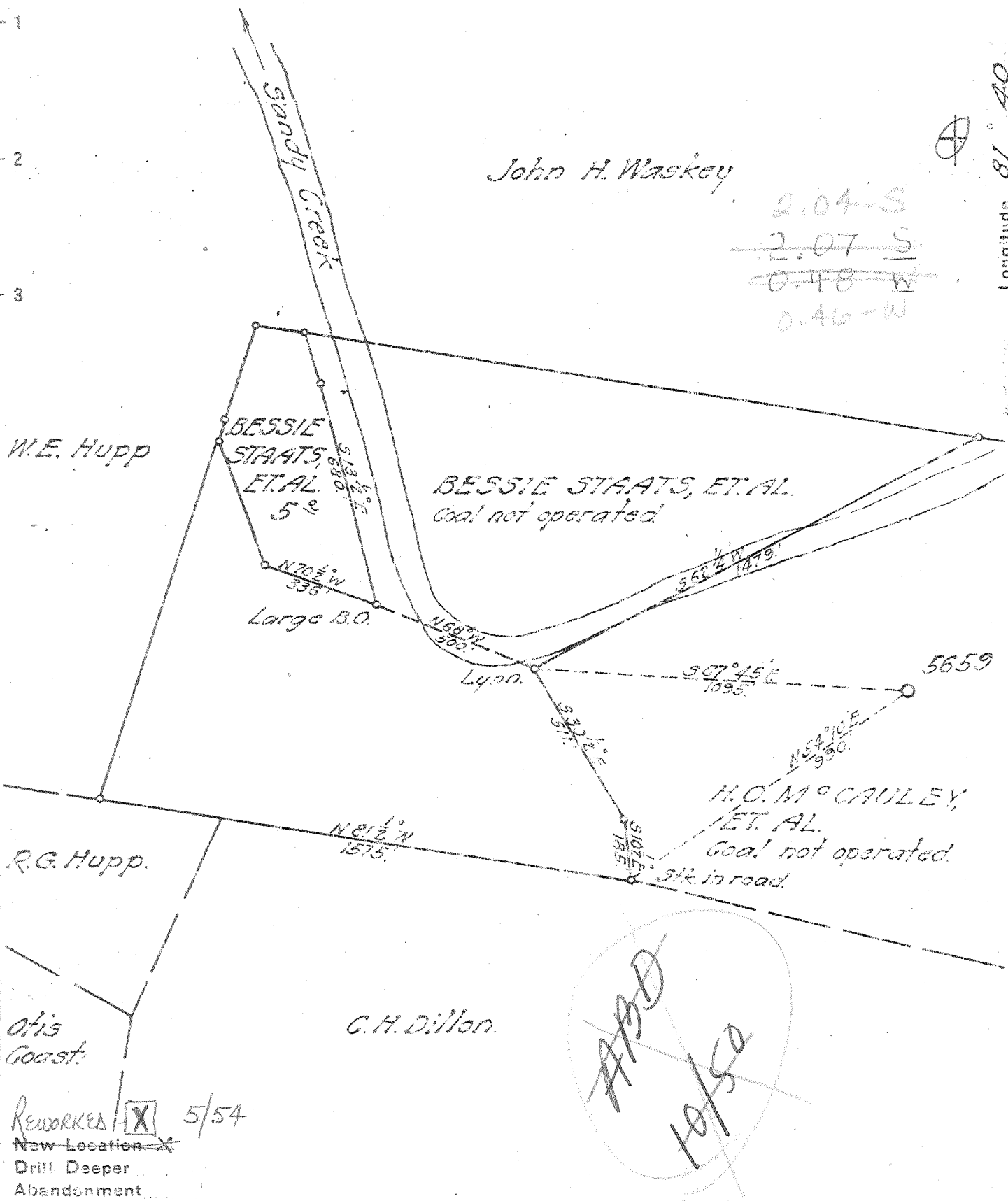
John H. Waskey

2.04 S

~~2.07 S~~

~~0.48 W~~

0.46 W



Reworked 5/54

New Location

Drill Deeper

Abandonment

Company UNITED FUEL GAS CO

Address CHARLESTON W. VA

Farm H.O. M'GAULEY, ET. AL.

Tract _____ Acres 160 Lease No. 42901

Well (Farm) No. _____ Serial No. 5659

Elevation (Spirit Level) 708.4 WC

Quadrangle RIPLEY-WC

County JACKSON District RAVENSWOOD

Engineer J.A. Cunningham

Engineer's Registration No. 659

File No. 58-95 Drawing No. _____

Date April 18, 1945 Scale 1" = 400'

STATE OF WEST VIRGINIA
DEPARTMENT OF MINES
OIL AND GAS DIVISION
CHARLESTON

WELL LOCATION MAP
FILE NO. JAC - 485 - W

+ Denotes location of well on United States Topographic Maps, scale 1 to 62 500. Latitude and longitude lines being represented by border lines as shown.

- Denotes one inch spaces on reproduction of original tracing

Storage Well 9-0-1-92 Deep Well



STATE OF WEST VIRGINIA
DEPARTMENT OF MINES
OIL AND GAS DIVISION

Rifley

WELL RECORD

Permit No. Jac-485

Oil or Gas Well GAS

(KIND)

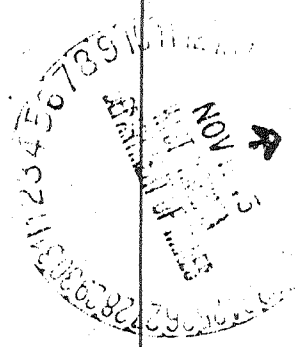
Company UNITED FUEL GAS COMPANY
 Address Box 1273, Charleston 25, West Virginia
 Farm H. O. McCauley, et al Acres 160
 Location (waters) Trace Fork
 Well No. 5659 Elev. 708.4 L
 District Ravenswood County Jackson
 The surface of tract is owned in fee by H.O. McCauley
 Address Rt. #3 Sandyville, W.Va.
 Mineral rights are owned by H.O. McCauley et al
 Address Rt. #3 Sandyville, W.Va.
 Drilling commenced 5-16-45
 Drilling completed 9-8-45
 Date Shot Not Shot From _____ To _____
 With _____
 Open Flow /10ths Water in _____ Inch
/10ths Merc. in _____ Inch
 Volume _____ Cu. Ft.
 Rock Pressure _____ lbs. _____ hrs.
 Oil _____ bbls., 1st 24 hrs.
 Fresh water 210 feet _____ feet
 Salt water 1625 feet _____ feet

Casing and Tubing	Used in Drilling	Left in Well	Packers
Size			
16			Kind of Packer _____
18-3/8"		638'	
10-3/4"		1137'	Size of _____
8 5/8"		2052'	
8 7/8"		4804'	Depth set _____
5 3/16			
3			Perf. top _____
2			Perf. bottom _____
Liners Used			Perf. top _____
			Perf. bottom _____

CASING CEMENTED _____ SIZE _____ No. Ft. _____ D

COAL WAS ENCOUNTERED AT _____ FEET _____ INCH
 _____ FEET _____ INCHES _____ FEET _____ INCH
 _____ FEET _____ INCHES _____ FEET _____ INCH

Formation	Color	Hard or Soft	Top	Bottom	Oil, Gas or Water	Depth Found	Remarks
Soil			0	5			
Red Rock			5	145			
Blue Rock			140	155			
Red Rock			155	205			
White Slate			205	235	Water	205-210	Hole full 2
Red Rock			235	305			
White Sand			305	355			
Blue Slate			355	440			
Red Rock			440	470			
Blue Slate			470	490			
Red Rock			490	525			
Pittsburgh Sand			525	617			
White Slate			617	705			
White Sand			705	720			
Blue Slate			720	745			
Red Rock			745	775			
White Slate			775	810			
Red Rock			810	870			
White Slate			870	890			
Black Slate			890	910			
Red Rock			910	935			
Line Shell			935	950			
Pink Rock			950	955			
Line Stone			955	980			
Blue Slate			980	1000			
Line Shell			1000	1005			
Black Slate			1005	1025			
Line Shell			1025	1030			
White Slate			1030	1135			
Line Shell			1135	1140			
White Slate			1140	1155			
White Sand			1155	1165			
White Slate			1165	1175			
White Sand			1175	1185			
White Slate			1185	1230			
Sand			1230	1260			
Black Slate			1260	1275			



[Handwritten signature]

Formation	Color	Hard or Soft	Top	Bottom	Oil, Gas or Water	Depth Found	Remarks
White Slate			1275	1280			
White Sand			1280	1400			
Black Slate			1400	1405			
Lime Gray			1405	1495			
White Sand			1495	1568			
Black Slate			1568	1610			
Salt Sand			1610	1730	Water	1625	Hole Full
Maxon Sand			1730	1750			
Slate			1750	1752			
Big Lime			1752	1825			
Injun			1825	1868			
Lime			1868	1910			
Sand			1910	2040			
Blue Slate			2040	2050			
Lime Shell			2050	2068			
Slate & Lime	Shell		2068	2365			
Coffee Shale			2365	2390			
Berea Shell			2390	2400			
White Slate			2400	2425			
Slate Shells			2425	3100			
White Slate			3100	3605			
Dark Lime			3605	3770			
Slate & Shells			3770	3860			
Brown Shale			3860	3979	Gas	3865	Show
Gray Shale			3979	4000	Gas	3925-3930	
Brown Shale			4000	4120			
White Slate			4120	4495	Gas	4120-4495	
Dark Slate			4495	4550			
Shale Dark			4550	4600	Gas	4575-4580	
					and	4600-4605	
Brown Shale			4600	4750			
Black Shale			4750	4809			
Corniferous	Lime		4809	4917	Gas	4917-4920	
Oriskany			4917	4962	"	4932-4935	
Total Depth				4962			

Date November 16, 19__

APPROVED UNITED FUEL GAS COMPANY, Ov

By J. H. Moore
(Title) Chief Engineer



STATE OF WEST VIRGINIA
DEPARTMENT OF MINES
OIL AND GAS DIVISION 4

UNIFORM REPORT NO. 10

STATE OF WEST VIRGINIA

Quadrangle Ripley

WELL RECORD

Permit No. Jac.-485-R

Oil or Gas Well Storage
(KIND)

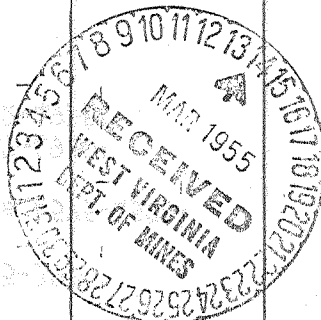
Company United Fuel Gas
Address Box 1273, Charleston, W. Va.
Farm H. W. McCauley Acres 128^a
Location (waters) Sandy Creek
Well No. X59-7320 Elev. 708.4
District Ravenswood County Jackson
The surface of tract is owned in fee by _____
Address _____
Mineral rights are owned by Edna P. Estright, Agt. et al
975 Marion Place
Address Akron, Ohio
Drilling commenced 5-12-54
Drilling completed 5-30-54
Date Shot _____ From _____ To _____
With _____

Casing and Tubing	Used in Drilling	Left in Well	Packers
Size			Kind of Packer
16			
18			
10	158'	158'	Size of
8 1/4			
6 3/4			Depth set
5 3/16			
4 1/2"	4873'	4873'	Perf. top
2			Perf. bottom
Liners Used			Perf. top
			Perf. bottom

Open Flow _____ /10ths Water in _____ Inch
_____ /10ths Merc. in _____ Inch
Volume _____ Cu. Ft.
Rock Pressure _____ lbs. _____ hrs.
Oil _____ bbls., 1st 24 hrs.
Fresh water 205-210' feet 1625' feet
Salt water _____ feet Salt feet

CASING CEMENTED	SIZE	No. Ft.	Date
COAL WAS ENCOUNTERED AT _____ FEET _____ INCHES			
_____ FEET	_____ INCHES	_____ FEET	_____ INCHES
_____ FEET	_____ INCHES	_____ FEET	_____ INCHES

Formation	Color	Hard or Soft	Top	Bottom	Oil, Gas or Water	Depth Found	Remarks
Soil			0	5			
Red Rock			5	145			
Blue Rock			145	155			
Red Rock			155	205			
White Slate			205	235			
Red Rock			235	305			
White Sand			305	355			
Blue Slate			355	440			
Red Rock			440	470			
Blue Slate			470	490			
Red Rock			490	525			
Pittsburgh Sd.			525	617			
White Slate			617	705			
White Sand			705	720			
Blue Slate			720	745			
Red Rock			745	775			
White Slate			775	810			
Red Rock			810	870			
White Slate			870	890			
Black Slate			890	910			
Red Rock			910	935			
Lime Shell			935	950			
Pink Rock			950	955			
Limestone			955	980			
Blue Slate			980	1000			
Lime Shell			1000	1005			
Black Slate			1005	1025			
Lime Shell			1025	1030			
White Slate			1030	1135			
Lime Shell			1135	1140			
White Slate			1140	1155			
White Sand			1155	1165			
White Slate			1165	1175			
White Sand			1175	1185			
White Slate			1185	1230			
Sand			1230	1260			
Black Slate			1260	1275			
White Slate			1275	1280			
White Sand			1280	1400			



Formation	Color	Hard or Soft	Top	Bottom	Oil, Gas or Water	Depth Found	Remarks
Black Slate			1400	1405			
Gray Lime			1405	1495			
White Sand			1495	1568			
Black Slate			1568	1610			
Salt Sand			1610	1730	Show gas	3865'	
Maxon Sand			1730	1750			
Slate			1750	1752			
Big Lime			1752	1825	Gas	3925-3930'	
Injun <i>Keener</i> } 340			1825	1868			
Lime			1868	1910	Show gas	4575-4580'	
Sand - <i>Injun</i>			1910	2040			
Blue Slate			2040	2050	Gas	4917-4920'	
Lime Shell			2050	2068	Gas	4932-4935'	
Slate & Lime Shell			2068	2365			
Coffee Shale			2365	2390			
Berea Shell			2390	2400			
White Slate			2400	2425			
Slate & Shells			2425	3100			
White Slate			3100	3605			
Dark Lime			3605	3770			
Slate & Shells			3770	3860			
Brown Shale			3860	3979			
Gray Shale			3979	4000			
Brown Shale			4000	4120			
White Slate			4120	4495			
Dark Slate			4495	4550			
Dark Shale			4550	4600			
Brown Shale			4600	4750			
Black Shale - <i>MARCELLUS</i>			4750	4809			
Corniferous Lime - <i>463</i>			4809	4917			
Oriskany			4917	4962			
Total Depth	<i>475</i>			4962			

Date March 11, 19 55

UNITED FUEL GAS CO., Owner

APPROVED *[Signature]*