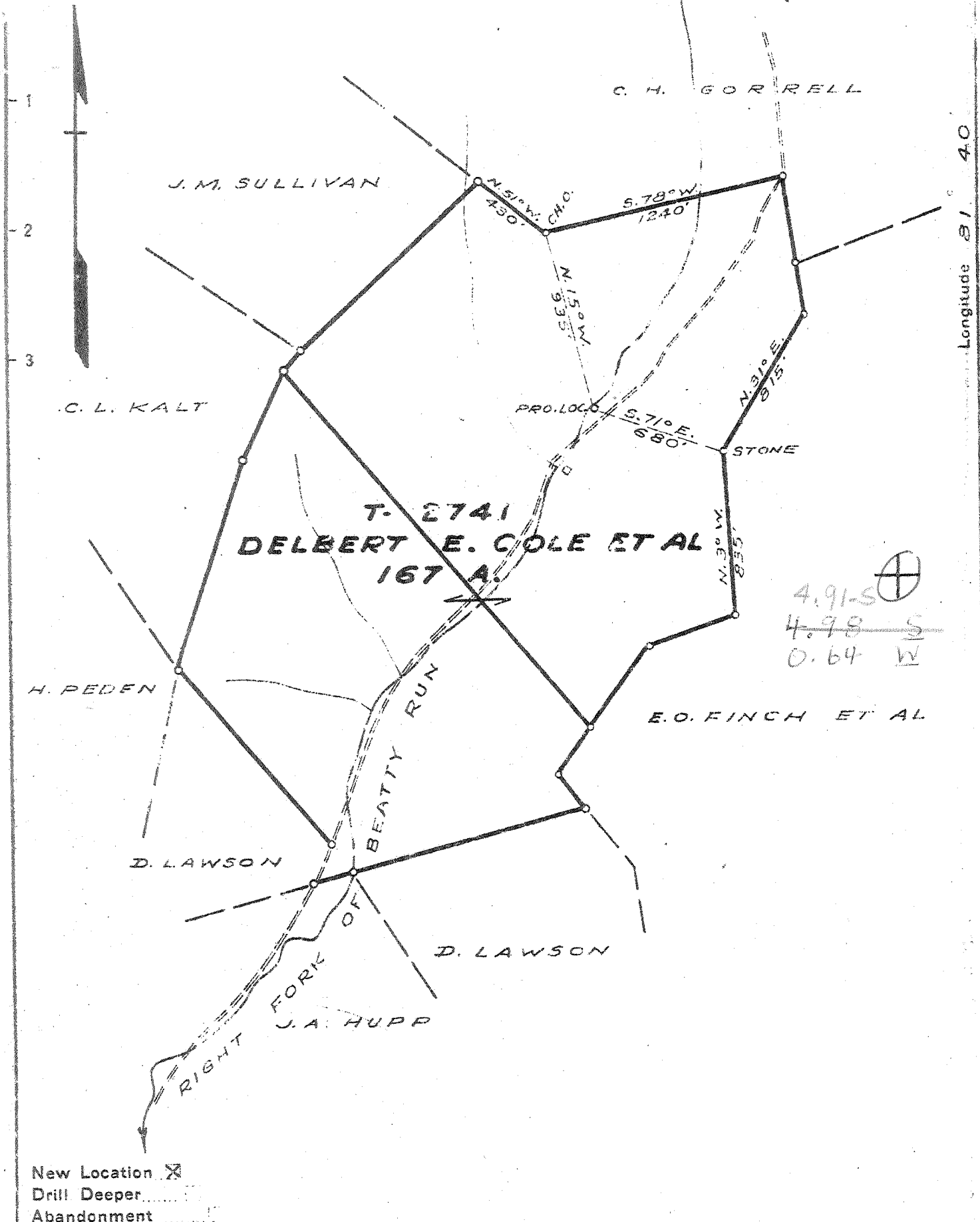


Latitude 39 00  
39 00

Longitude 81 40



New Location   
 Drill Deeper   
 Abandonment

Company COLUMBIAN CARBON CO.  
 Address CHARLESTON W. VA.  
 Farm DELBERT E. COLE ET AL  
 Tract \_\_\_\_\_ Acres 167 Lease No. T-2741  
 Well (Farm) No. ONE Serial No. \_\_\_\_\_  
 Elevation (Spirit Level) 759.3  
 Quadrangle RIPLEY N.W. 3-492-065 NW  
 County JACKSON District EVENSWOOD  
 Engineer J. N. Sell  
 Engineer's Registration No. 772  
 File No. \_\_\_\_\_ Drawing No. 323  
 Date APRIL 23, 1945 Scale 1" = 660'

STATE OF WEST VIRGINIA  
 DEPARTMENT OF MINES  
 OIL AND GAS DIVISION  
 CHARLESTON

WELL LOCATION MAP  
 FILE NO. JAC-490

+ Denotes location of well on United States Topographic Maps, scale 1 to 62,500, latitude and longitude lines being represented by border lines as shown.

- Denotes one inch spaces on border line of original tracing.

666-192 Deep Well ✓

WEST VIRGINIA DEPARTMENT OF MINES  
OIL & GAS DIVISION  
W E L L R E C O R D

Permit No. Jac 490

Ripley Quad.

Company

Address

Farm

Location

Well No.

District

Surface

Mineral

Commenced

Completed

Date shot

Open flow

Volume

Rock Pressure

Fresh Water

Salt Water

Columbian Carbon Company

Box 873, Charleston, 23, W.Va.

Delbert E. Cole et al Acres 167

Right Fork of Beatty Run

1 ( GW-804) Elev. 761.8 DF

Ravenswood Jackson County

Delbert E. Cole, et al, Ravenswood, W.Va.

Same (For further addresses contact C.C.)

6-20-45

10-15-45

10-15-45 Depth 4927 SLM to 4967 SLM with 266-2/3# Gelatin

32/10ths W in 5 1/2 17#

1, 427,000 C.F.

1190 lbs. 72 hrs.

402' 3-13" blrs.; 620' 5 blrs. 1 hr.

1200' 2-10" blr.; 1390' 160' 2 hrs.

filled up 700' in 6 hrs.

Gas Well  
CASING & TUBING

16 55# 45'11 23'7  
13 3/8 48# 752'8 pld.  
10 1/2 35.75# 1141'8 "  
8 1/2 24# 2058'6 "  
5 1/2 17#&20# 4863'10 Sm.  
2 3/8 4# 4999'7 "  
Liners  
3 1/2 8.7# 75'11 "

Midget B.H. Packer  
Size 5 1/2"  
Depth 4830' SLM

No coal

Clay	0	10	Sand	1220	1276
Sand	10	20	Slate & Shells	1276	1330
Red Rock	20	43	Sand	1330	1350
Slate	43	50	Slate	1350	1383
Red Rock	50	100	Sand	1383	1455
White Slate	100	110	Slate	1455	1482
Red Rock	110	125	Sand & Lime	1482	1518
White Slate	125	131	Grey Sand	1518	1555
Red Rock	131	169	Black Slate	1555	1558
Slate	169	184	Dark Lime	1558	1625
Red Rock	184	220	Slate & Lime	1625	1709
Blue Slate	220	225	Sand	1709	1819
Red Rock	225	268	Big Lime	1819	1876
Sand	268	295	Sand	1876	1901
Red Rock	295	355	Big Lime	1901	1945
Slate	355	375	Big Injun Sand	1945	2057SLM
Sand	375	402	Lime Shells	SLM 2057	2063
Slate	402	425	Sand Shells	2068	2080
Red Rock	425	477	Lime	2080	2100
Sand	477	502	Slate & Shells	2100	2408
Red Rock	502	557	Brown Shale	2408	2428
Slate	557	568	Berea Grit	2428	2442
Red Rock	568	610	Slate & Shells	2442	3650
Sand - 1 1/2 P.H. Sand?	610	686	Brown Shale	3650	3777
Slate	686	693	Slate & Shells	3777	3950
Red Rock	693	705	Brown Shale	3950	4035
Slate	705	761	Slate & Shells	4035	4050
Sand	761	766	Light Brown Shale	4050	4200
Lime Shell	766	790	Gray Slate	4200	4642
Lime	790	800	Brown Shale	4642	4818SLM
Slate	800	810	Corniferous Lime	Ab 3 SLM 4818	4930
Red Rock	810	850	Criskany Sand	4930	4968
Slate	850	856	Lime Break	4968	4971
Lime	856	861	Criskany Sand	4971	5000
Slate	861	876	Lime	5000	5007SLM
Red Rock	876	919	TOTAL DEPTH	485	5007' SLM
Lime	919	935	1134' SLM-1150' DLM	9-13-45 5 1/2" csg. Ran	
Slate	935	980	2057' SLM--2062' DLM	75 bgs. Aquagel & 4	
Lime	980	990	4818' SLM--4859' DLM	bales Fibrotex. Cir.	
Sand	990	1010	Gas 2431' show	& ret. while mixing.	
Slate	1010	1090	Gas 4055' show	Delbert Lawson, Cem.	
Sand	1030	1043	Gas Pays: 4930-4940	C.C.Co.Crew	
Slate	1043	1054	CEMENT RECORD:		
Red Rock	1054	1063	7-3-45 13 3/8" casing. Ran 18 sacks		
Slate	1063	1117	Aquagel and 50# Fibrotex. Circulation		
Red Rock	1117	1124	while mixing, returns 630' . C.C.Co.Crew		
Grey Shell	1124	1134 SLM	7-10-45 10 1/2" casing. Ran 22 sacks		
Sand Shell Dark	1134	1144	Aquagel and 50# Fibrotex. Circulation		
Grey Sand	1144	1205	and returns at 1020'. Delbert Lawson,		
Black Slate	1205	1220	1650' Cementer, C.C. Co. Crew		
and 1 bale Fibrotex. Cir. while mixing. Ret.			8-4-45 8 5/8" casing. Ran 24 bags aquagel		