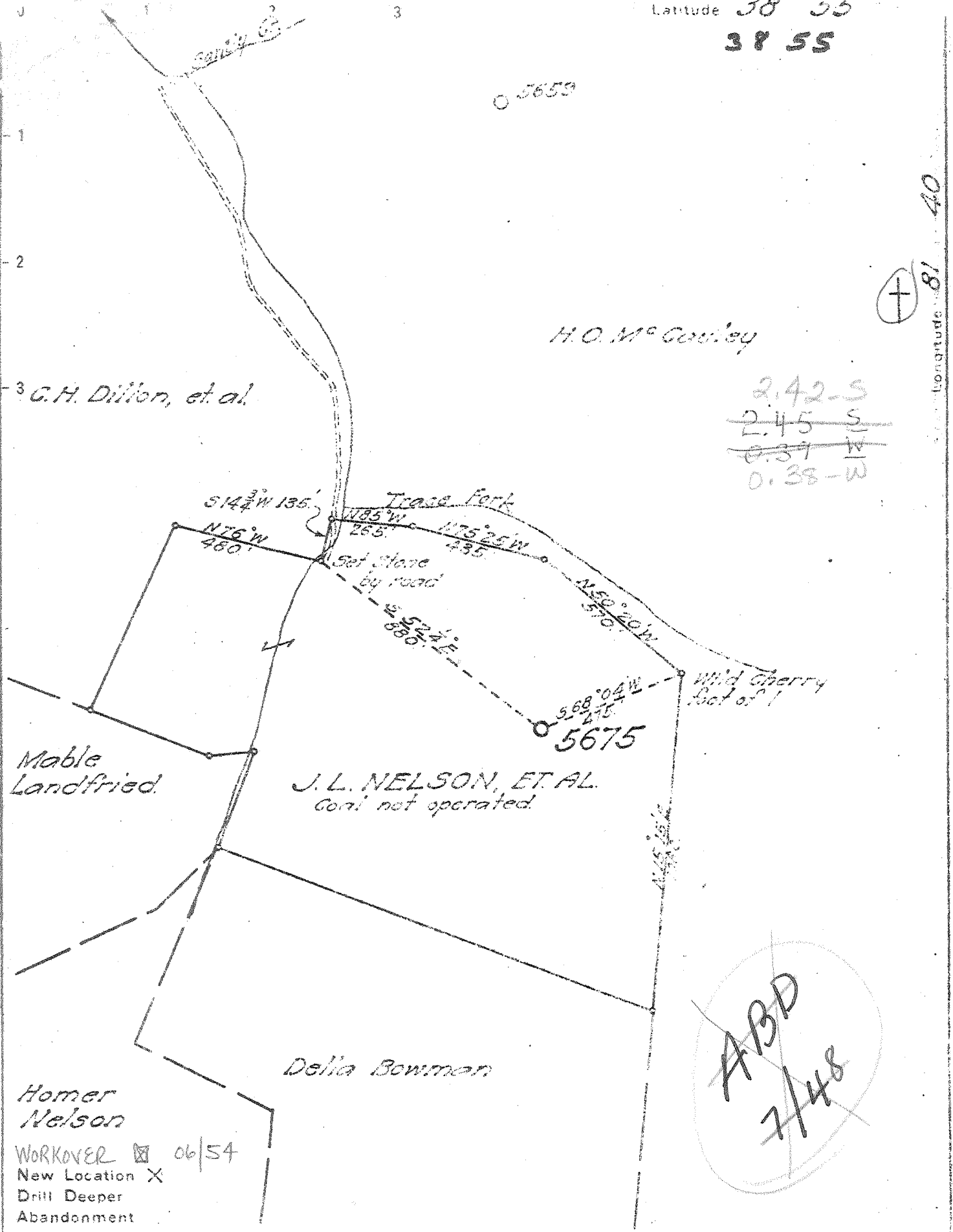


Latitude 38 55
38 55

Longitude 81 40



2.42-S
 2.45-S
 0.37-W
 0.38-W

WORKOVER 06/54
 New Location X
 Drill Deeper
 Abandonment

Company UNITED FUEL GAS CO.
 Address CHARLESTON W.VA
 Farm J.L. NELSON, ET AL.
 Tract _____ Acres 48 Lease No. 42898
 Well (Farm) No. _____ Serial No. 5675
 Elevation + Spirit Level 715.65 ft
 Quadrangle RIPLEY - WU
 County JACKSON District RAVENSWOOD
 Engineer G.D. Summerville
 Engineer's Registration No. 659
 File No. 58.95 Drawing No. _____
 Date Nov 8, 1925 Scale 1" = 400'

STATE OF WEST VIRGINIA
 DEPARTMENT OF MINES
 OIL AND GAS DIVISION
 CHARLESTON

WELL LOCATION MAP
 FILE NO. JAC-491-W

+ Denotes location of well on United States Topographic Maps, scale 1 to 62,500. Latitude and longitude lines being represented by border lines as shown.
 - Denotes one inch spaces on border lines of original tracing.

Storage Well 9-0-1925 Deep Well



STATE OF WEST VIRGINIA
DEPARTMENT OF MINES
OIL AND GAS DIVISION

Raferty

WELL RECORD

Permit No. JAC-491

Oil or Gas Well GAS

Company UNITED FUEL GAS COMPANY
Address Charleston, West Virginia
Farm J. L. Nelson, et al Acres 160
Location (waters) Trace Fork of Sandy Creek
Well No. 5675 Elev. 715.65' Gr.
District Ravenswood County Jackson
The surface of tract is owned in fee by J. L. Nelson
Address Sandyville, W. Va.
Mineral rights are owned by J. L. Nelson, et al
Address Sandyville, W. Va.
Drilling commenced 10-26-45
Drilling completed 2-8-46
Date Shot 2-14-46 From 4963 To 4979
With 40 Qts
Open Flow /10ths Water in Inch
/10ths Merc. in Inch
Volume Cu. Ft.
Rock Pressure 1350 lbs. 36 hrs.
Oil bbls., 1st 24 hrs.
Fresh water feet
Salt water 1700 feet

Casing and Tubing	Used in Drilling	Left in Well	Packers
Size		22'	Kind of Packer
16			
13 3/8"		631'	<i>none</i>
10 3/4"		1120'	<i>none</i>
8 5/8"		2058'	Size of <u>2064</u>
7"		4848	Depth set <u>399</u>
5 3/16			
3		4998	Perf. top
2			Perf. bottom
Liners Used			Perf. top
			Perf. bottom

CASING CEMENTED SIZE No. Ft.
COAL WAS ENCOUNTERED AT FEET INC
 FEET INCHES FEET INC
 FEET INCHES FEET INC

Formation	Color	Hard or Soft	Top	Bottom	Oil, Gas or Water	Depth Found	Remarks
Yellow Sand			0	25			
Blue Mud			25	30			
Blue Rock			30	35			
Red Rock			35	200			
Blue Slate			200	215			
Red Rock			215	250			
Blue Slate			250	260			
Red Rock			260	300			
White Sand			300	353			
Slate			353	388			
Red Rock			388	405			
Blue Slate			405	415			
Lime Rock			415	420			
White Slate			420	485			
White Sand			485	495			
Red Rock			495	515			
Slate & shells			515	545			
Pitts. Sand			545	610			
Slate & shells			610	715			
White Sand			715	750			
Slate			750	755			
Red Rock			755	800			
Slate			800	805			
Red Rock			805	875			
Lime			875	890			
Slate			890	891			
Lime			891	920			
Slate			920	940			
Sand			940	950			
Slate & shells			950	975			
White Sand			975	990			
Blue Slate			990	995			
Lime shells			995	1000			
Slate			1000	1020			
Broken Sand			1020	1050			
Black Slate			1050	1065			
Lime shells			1065	1070			
White Slate			1070	1090			

APR 1946
WEST VIRGINIA
DEPARTMENT OF MINES
011
980
Show

Formation	Color	Hard or Soft	Top	Bottom	Oil, Gas or Water	Depth Found	Remarks
Slate & shells			1090	1125			
Sand			1125	1155			
Slate			1155	1175			
Slate & shells			1175	1310			
Dunkard Sand			1310	1455	Oil	1330	Show
Gray Lime			1455	1475			
Sand			1475	1590	Water	1495	2 B.P.H.
Slate			1590	1620			
Salt Sand			1620	1726	Water	1700	Hole full
Maxon Sand			1726	1750			
Little Lime			1750	1777			
Pencil Cave			1777	1780			
Big Lime			1780	1935			
Sand			1935	1947			
Slate			1947	1950			
Lime			1950	1960			
Slate			1960	1970			
Lime			1970	1985			
Sand			1985	2050			
Slate			2050	2058			
Lime			2058	2065			
Slate & shells			2065	2418			
Berea Shells			2418	2430			
Slate & shells			2430	3915			
Brown Shale			3915	4175			
White Slate			4175	4550			
Brown Shale			4550	4825	Gas	4585-4595	
Black Shale			4825	4835			
Corniferous			4835	4946	Gas	4946-4948	
Oriskany			4946	4998	"	4948-4950	
Total Depth				4998'		4968-4969	

Date April 17, _____, 19

APPROVED UNITED FUEL GAS COMPANY _____, Ov

By J.H. Moore
(Title) Chief Engineer



STATE OF WEST VIRGINIA
DEPARTMENT OF MINES
OIL AND GAS DIVISION

Quadrangle Ripley

WELL RECORD

Permit No. Jac.-491-R

Oil or Gas Well Storage
(KIND)

Company United Fuel Gas
Address Box 1273, Charleston, W. Va.
Farm J. E. Nelson Acres 40
Location (waters) Trace Fork of Sandy Creek
Well No. X59-7321 Elev. 715.65
District Ravenswood County Jackson
The surface of tract is owned in fee by _____
Address _____
Mineral rights are owned by John E. Nelson
Address Rt. 1, Ravenswood,
W. Va.
Drilling commenced 5-28-54
Drilling completed 6-13-54
Date Shot _____ From _____ To _____
With _____
Open Flow _____ /10ths Water in _____ Inch
_____ /10ths Merc. in _____ Inch
Volume _____ Cu. Ft.
Rock Pressure _____ lbs. _____ hrs.
Oil _____ bbls., 1st 24 hrs.
Fresh water 1495' feet 1700' feet
Salt water 500' feet 500' feet

Casing and Tubing	Used in Drilling	Left in Well	Packers
Size			
16			Kind of Packer
13			
10		208'	Size of
8 1/4			
6 3/4			Depth set
5 3/16			
4 1/2	4985'	4985'	Perf. top
2			Perf. bottom
Liners Used			Perf. top
			Perf. bottom

CASING CEMENTED	SIZE	No. Ft.	Date
COAL WAS ENCOUNTERED AT _____ FEET _____ INCHES			
_____ FEET	_____ INCHES	_____ FEET	_____ INCHES
_____ FEET	_____ INCHES	_____ FEET	_____ INCHES

Formation	Color	Hard or Soft	Top	Bottom	Oil, Gas or Water	Depth Found	Remarks
Yellow Sand			0	25			
Blue Mud			25	30			
Blue Rock			30	35			
Red Rock			35	200			
Blue Slate			200	215			
Red Rock			215	250			
Blue Slate			250	260			
Red Rock			260	300			
White Sand			300	353			
Slate			353	388			
Red Rock			388	405			
Blue Slate			405	415			
Lime Rock			415	420			
White Slate			420	485			
White Sand			485	495			
Red Rock			495	515			
Slate & Shells			515	545			
Pittsburgh Sand			545	610			
Slate & Shells			610	715			
White Sand			715	750			
Slate			750	755			
Red Rock			755	800			
Slate			800	805			
Red Rock			805	875			
Lime			875	890			
Slate			890	891			
Lime			891	920			
Slate			920	940			
Sand			940	950			
Slate & Shells			950	975			
White Sand			975	990			
Blue Slate			990	995			
Lime Shells			995	1000			
Slate			1000	1020			
Broken Sand			1020	1050			
Black Slate			1050	1065			
Lime Shells			1065	1070			
White Slate			1070	1090			
Slate & Shells			1090	1125			

