

Notes:
 This Map is For Well Location Purposes Only & Does Not Represent A Complete Property Survey.
 No Water Wells Or Houses Within 200'

REF: F-151
 FB 1539 PG 18
 FB 2670 PG 51
 (+) DENOTES LOCATION OF WELL ON UNITED STATES TOPOGRAPHIC MAPS (7 1/2")

I THE UNDERSIGNED, HEREBY CERTIFY THAT THIS PLAT IS CORRECT TO THE BEST OF MY KNOWLEDGE AND BELIEF AND SHOWS ALL THE INFORMATION REQUIRED BY LAW AND THE REGULATIONS ISSUED AND PRESCRIBED BY THE DEPARTMENT OF ENERGY.
 (SIGNED) [Signature]
 R.P.E. _____ L.L.S. 798

PLACE SEAL HERE

STATE OF WEST VIRGINIA
 DIVISION OF ENVIRONMENTAL PROTECTION
 SECTION OF OIL & GAS

DATE JANUARY 16, 2003
 OPERATOR'S WELL NO. 7286
 API WELL NO. _____

WELL TYPE: OIL _____ GAS LIQUID INJECTION _____ WASTE DISPOSAL _____
 (IF "GAS,") PRODUCTION _____ STORAGE DEEP _____ SHALLOW _____

LOCATION: ELEVATION 714 WATER SHED TRACE FORK OF SANDY CREEK
 DISTRICT RAVENSWOOD COUNTY JACKSON
 QUADRANGLE SANDYVILLE COORDINATES LAT: 38°52'44" LONG: 81°40'44"

SURFACE OWNER JEFFERY HUPP ACREAGE 32.5
 ORIGINAL OIL & GAS ROYALTY OWNER HOMER NELSON LEASE ACREAGE 30
 COAL OWNER _____ LEASE NO. 1042899

PROPOSED WORK: DRILL _____ CONVERT _____ DRILL DEEPER _____ REDRILL _____ FRACTURE OR STIMULATE _____ PLUG OFF OLD FORMATION _____ PERFORATE NEW FORMATION _____ OTHER PHYSICAL CHANGE IN WELL (SPECIFY) Storage Recondition

PLUG AND ABANDON _____ CLEAN OUT AND REPLUG _____

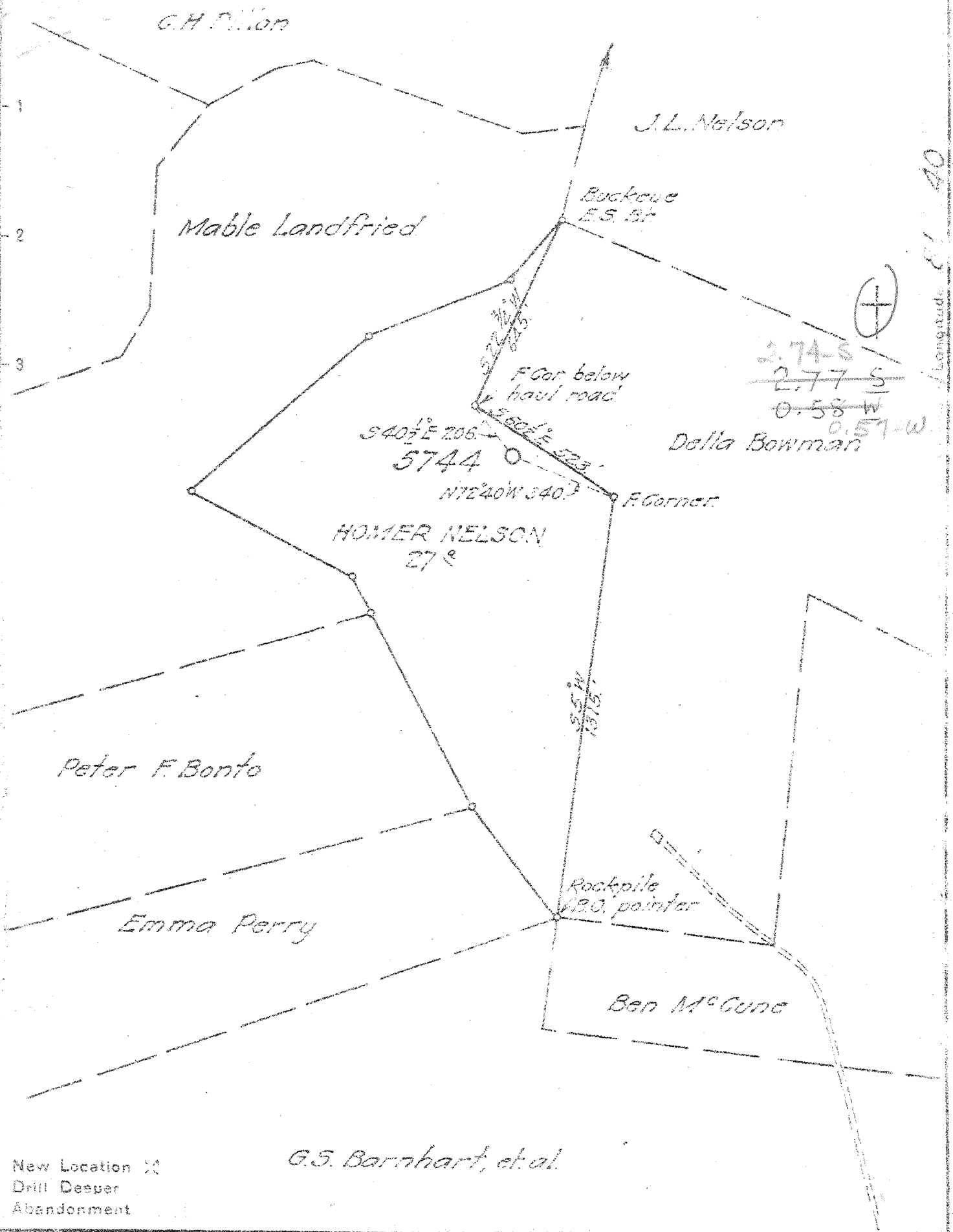
TARGET FORMATION _____ ESTIMATED DEPT _____
 WELL OPERATOR COLUMBIA GAS TRANSMISSION CORP DESIGNATED AGE PAUL AMICK
 ADDRESS PO Box 1273, Charleston, WV 25325-1273 ADDRESS PO Box 1273, Charleston, WV 25325-1273

DEEP WELL

9-0 ELK-FOCA (SISSONVILLE) (192)

DEC 12 2003

COUNTY NAME JAC
 PERMIT 512 F



Longitude 81 40

2.74 S
~~2.77 S~~
~~0.58 W~~
 0.57 W

New Location
 Drill Deeper
 Abandonment

G.S. Barnhart, et al.

Company UNITED FUEL GAS CO.
 Address CHARLESTON W. VA.
 Farm HOMER NELSON, ET AL.
 Tract _____ Acres 27 Lease No. 42899
 Well (Farm) No. _____ Serial No. 5744
 Elevation (Spirit Level) 726.5
 Quadrangle RIPLEY WC
 County JACKSON District RAVENSWOOD
 Engineer W.H. Moore
 Engineer's Registration No. 662
 File No. 58-95 Drawing No. _____
 Date Feb 5, 1946 Scale 1" = 400'

STATE OF WEST VIRGINIA
 DEPARTMENT OF MINES
 OIL AND GAS DIVISION
 CHARLESTON

WELL LOCATION MAP
 FILE NO. JAC-512

+ Denotes location of well on United States Topographic Maps, scale 1 to 62,500, latitude and longitude lines being represented by border lines as shown.
 - Denotes one inch spaces on border line of original tracing.

6-0-192

Deep Hill

WEST VIRGINIA DEPARTMENT OF MINES
OIL & GAS DIVISION
W E L L R E C O R D

Permit No. Jac 512

Gas Well
CASING & TUBING

Ripley Quad.

Company

United Fuel Gas Company

Address

P.O. Box 1273, Charleston 25, W.Va. 13

Farm

Homer Nelson et al Acres 1132 10

Location

Mud Run of Sandy Creek 8

Well No.

5744 Elev. 7265 7

District

Ravenswood Jackson County

Surface

Mineral

Homer Nelson et al, Rt. 3,

Sandyville, W.Va.

Commenced

3-19-46

Completed

7-11-46

Not shot

Rock Pressure

890 lbs. 24 hrs.

Oil

Show at 1260'

Fresh Water

315' 3 BPH; 350' H.F.; 775' 2 BPH

Salt Water

1690' H.F.

Soil	0	10	Slate	2040	2042
Red Mud	10	25	Gray Lime	2042	2065
Yellow Sand	25	40	Slate & Shells	2065	2370
Red Rock	40	55	✓Brown Shale	2370	2385
Sand	55	65	✓Berea Grit	2385	2395
Red Rock	65	215	Slate & Shells	2395	3575
White Sand	215	225	Dark Lime	3575	3875
Blue Mud	225	240	Brown Shale	3875	3975
Red Rock	240	260	White Shale	3975	4005
Slate	260	270	Brown Shale	4005	4125
Red Rock	270	295	White Slate	4125	4500
White Sand	295	360	Dark Slate	4500	4610
Slate	360	370	Brown Shale	4610	4720
Red Rock	370	400	✓Black Shale-MARCELLUS	4720	4829
Slate	400	430	✓Corniferous Lime-463	4829	4939
Red Rock	430	460	✓Oriskany Sand	4939	4976
Lime	460	490	TOTAL DEPTH		4976
Slate	490	515	Gas 4945-4964	(475)	
Sand	515	540	Gas 3880-3885 show		
Slate	540	545			
Pittsburgh Sand-12	545	612			
Blue Slate	612	625			
Sand	625	640			
Slate	640	755			
Sand	755	780			
White Slate	780	800			
Sand	800	810			
Red Rock	810	861			
White Slate	861	910			
Black Slate	910	918			
Lime	918	935			
Pink Rock	935	945			
Slate & Shells	945	965			
White Slate	965	995			
Pink Rock	995	1000			
White Slate	1000	1030			
Black Slate	1030	1043			
Slate & Shells	1043	1255			
Sand	1255	1265	Oil 1290' show		
Slate & Shells	1265	1300			
White Sand	1300	1350			
Slate	1350	1370			
Sand	1370	1420			
Black Slate	1420	1430			
Gray Lime	1430	1440			
Slate	1440	1450			
Sand	1450	1560			
Black Slate	1560	1620			
Lime	1620	1650			
Salt Sand	1650	1750			
Slate	1750	1755			
Big Lime } 340	1755	1957			
Slate	1957	1960			
Big Injun	1960	2040			

State of West Virginia
Department of Environmental Protection
Office of Oil and Gas

Well Operator's Report of Well Work

Farm name: Jeffery Hupp

Operator Well No.: Ripley #7286

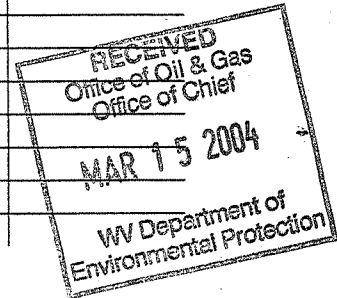
LOCATION: Elevation: 714'

Quadrangle: Sandyville, WV

District: Ravenswood County: Jackson
Latitude: 3600 Feet South of 38 Deg. 52 Min. 44 Sec.
Longitude: 3500' Feet West of 81 Deg. 40 Min. 44 Sec.

Company: Columbia Gas Transmission

	Casing & Tubing	Used in drilling	Left in well	Cement fill up Cu. Ft.
Address: RR 2 Box 138				
Sandyville, WV 25275				
Agent: Paul Amick				
Inspector: Larry Parrish				
Date Permit Issued: 12/9/03				
Date Well Work Commenced: 12/15/03				
Date Well Work Completed: 2/21/04 ? 03				
Verbal Plugging:				
Date Permission granted on:				
Rotary Cable Rig				
Total Depth (feet): 4976				
Fresh Water Depth (ft.):				
Salt Water Depth (ft.):				
Is coal being mined in area (N/Y)? No				
Coal Depths (ft.):				



OPEN FLOW DATA

Producing formation **Oriskany Sandstone** Pay zone depth (ft) **4939' to 4976'**
 Gas: Initial open flow **N/A** Gas Storage **MCF/d** Oil: Initial open flow **N/A** Gas Storage **Bbl/d**
 Final open flow **N/A** Gas Storage **MCF/d** Final open flow **N/A** Gas Storage **Bbl/d**
 Time of open flow between initial and final tests **N/A** Gas Storage **Hours**
 Static rock Pressure **N/A** Gas Storage **psig** (surface pressure) after **N/A** Gas Storage **Hours**

Second producing formation _____ Pay zone depth (ft) _____
 Gas: Initial open flow _____ MCF/d Oil: Initial open flow _____ Bbl/d
 Final open flow _____ MCF/d Final open flow _____ Bbl/d
 Time of open flow between initial and final tests _____ Hours
 Static rock Pressure _____ psig (surface pressure) after _____ Hours

NOTE: ON BACK OF THIS FORM PUT THE FOLLOWING: 1). DETAILS OF PERFORATED INTERVALS, FRACTURING OR STIMULATING, PHYSICAL CHANGE, ETC. 2). THE WELL LOG WHICH IS A SYSTEMATIC DETAILED GEOLOGICAL RECORD OF ALL FORMATIONS, INCLUDING COAL ENCOUNTERED BY THE WELLBORE.

Signed: John V. McCallister
 By: John V. McCallister
 Date: 3/9/04

JAC 0512

12/18/03 - Hydrofractured Oriskany Sandstone using;
1500 gal 28% Hcl
382 bbls H2O
28,213# 20/40 sand
186,500 scf N2
ATP 3550 psig
ATR 14 bpm

No earthen pit constructed.
All fluids hauled to L.A.D. in Wheeling, WV