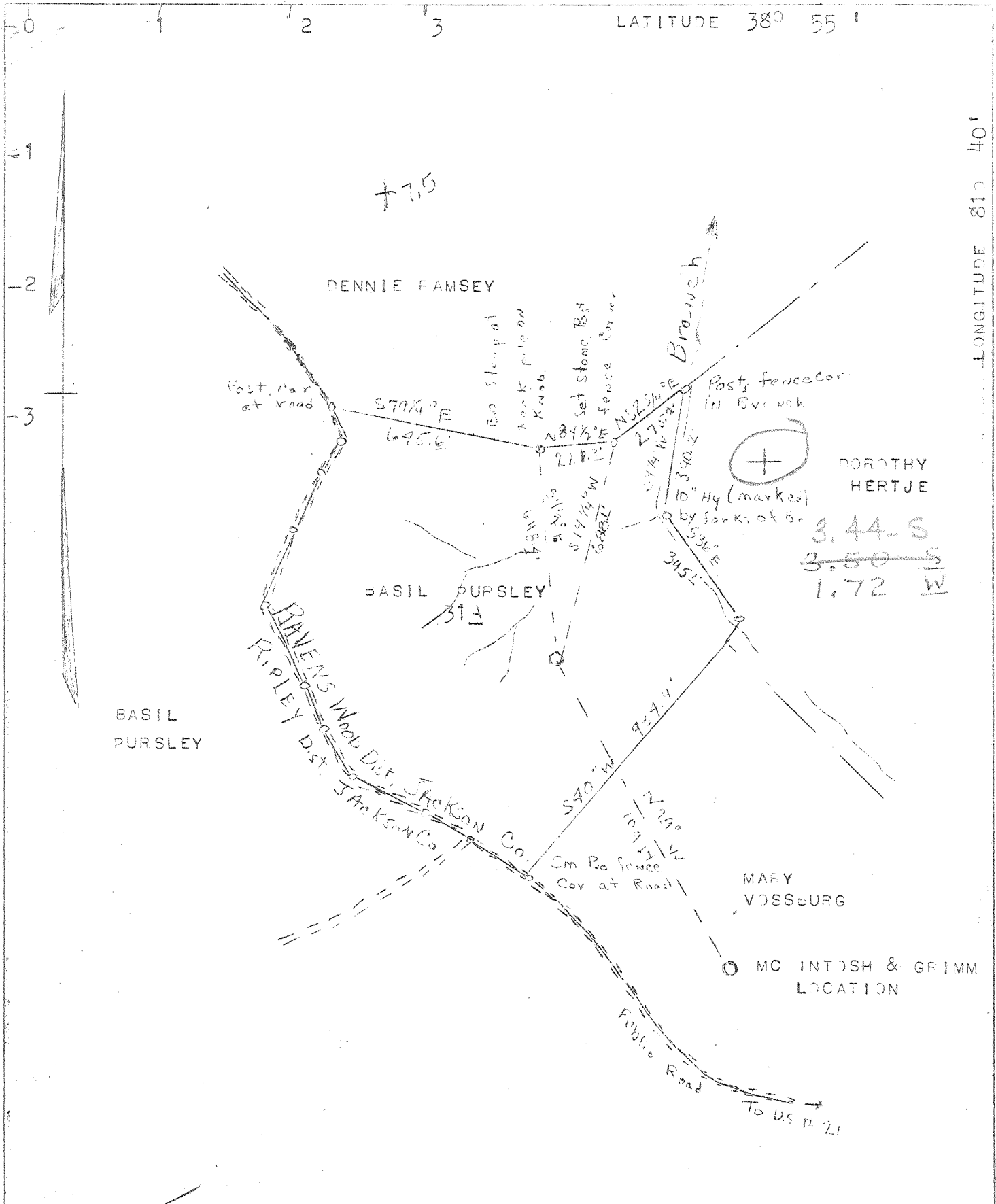


5230

LATITUDE 38° 55'

LONGITUDE 81° 40'



NEW LOCATION X
 DRILL DEEPER
 ABANDONMENT

COMPANY SPARTAN GAS CO.
 ADDRESS 518 KAN. VAL. BLDG., CHARLESTON
 FARM BASIL PURSLEY
 TRACT ACRES 31 LEASE NO.
 WELL (FARM) NO. 1 SERIAL NO. 5-81
 ELEVATION (SPIG IT LEVEL) 837.4 GROUND
 QUADRANGLE RIPLEY S.W. 4 S. 353 W1.77
 COUNTY JACKSON DISTRICT RAVENSWOOD
 ENGINEER W.S. GRAVELY
 ENGINEER'S REGISTRATION NO.
 FILE NO. DRAWING NO.
 DATE 3-2-46 SCALE 1" = 400'

STATE OF WEST VIRGINIA
 DEPARTMENT OF MINES
 OIL AND GAS DIVISION
 CHARLESTON

WELL LOCATION MAP
 FILE NO. JAC - 517

+ DENOTES LOCATION OF WELL ON UNITED STATES TOPOGRAPHIC MAPS, SCALE 1 TO 62,500, LATITUDE AND LONGITUDE LINES BEING REPRESENTED BY BORDER LINES AS SHOWN.

- DENOTES ONE INCH SPACES ON BORDER LINE OF ORIGINAL TRACING.

6-6-46 *Deep Well*

WEST VIRGINIA DEPARTMENT OF MINES
OIL & GAS DIVISION
W E L L R E C O R D

Permit No. Jac 517

Gas Well
CASING & TUBING

Ripley Quad.

Company	Spartan Gas Company		
Address	518 Kan. Valley Bldg., Chas., 1, W.Va.		
Farm	Basil Pursley Acres 31	18	453' Pld. 20'
Location	Mud Run of Sandy Creek	13 3/8	723' 6"
Well No.	One (1) Elev. 837.4	10 3/4	1230
District	Ravenswood Jackson County	8 5/8	2175
Surface	Basil Pursley, Ripley, W.Va.	7 24#	4915
Mineral	Same	2 tub.	5019' 2"
Commenced	6-30-46		
Completed	9-16-46		Casing cemented: 22 bags
Volume	6,936 MCF		gel. circulated behind 8 5/8
Rock Pressure	1,150#		csg. 12 bags cement run be-
Water	695-700 2 1/2 blrs. per hr.; 1780 HFW		hind 7" casing.

Red Rock	0	160	Big Injun Sand	2037	2080
Sand	160	170	Slate	2080	2085
Red Rock	170	205	Black Lime	2085	2118
Blue Slate	205	225	Sand - WEIR	2118	2148
Red Rock	225	240	Slate	2148	2165
Lime	240	250	Lime	2165	2225
Blue Slate	250	260	Slate & Shells	2225	4000
Red Rock	260	310	Brown Shale	4000	4150
Lime	310	330	White Slate	4150	4660
Slate	330	335	Brown Shale	4660	4904
Lime Hard	355	450	Corniferous Lime - 463	4904	5008
Shale	450	460	Oriskany Sand	5008	5030
Red Rock	460	475	Total Depth		5030
Shale	475	510			
Sand	510	535			
Red Rock	535	575	Gas 5009-5030		
Lime Hard	575	615			
Red Rock	615	640			
Sharp Sand Hard - FE PITE	640	706			
Slate	706	710			
Coal	710	712			
Slate & Shells	712	775			
Sand	775	825			
Slate	825	845			
Red Rock	845	865			
Slate	865	885			
Sand	885	917			
Slate	917	930			
Red Rock	930	950			
Slate	950	978			
Red Rock	978	995			
Slate	995	1016			
Lime	1016	1026			
Slate	1026	1034			
Red Rock	1034	1065			
Slate	1065	1100			
Red Rock	1100	1130			
Slate	1130	1230			
Sand	1230	1247			
Slate	1247	1355			
Sand	1355	1385			
Slate	1385	1420			
Sand	1420	1465			
Slate	1465	1470			
Sand	1470	1550			
Slate	1550	1560			
Sand	1560	1600			
Slate	1600	1650			
Sand	1650	1705			
Slate	1705	1744			
Lime	1744	1765			
Sand - Sack Sand?	1765	1875			
Lime	1875	1887			
Slate	1887	1900			
Big Lime	1900	2034			
Slate	2034	2037			

475

340

WR-35

Office of Oil & Gas
Permitting

OCT 18 1999

WV Division of
Environmental Protection

State of West Virginia
Division of Environmental Protection
Section of Oil and Gas
Well Operator's Report of Well Work

14-May-99
API # 47- 35-00517 F

Reviewed _____

Farm name: PURSLEY, JAMES

Operator Well No.: 7313

LOCATION: Elevation: 837.00 Quadrangle: RIPLEY

District: RAVENSWOOD County: JACKSON
Latitude: 2850 Feet South of 38 Deg. 52Min. 30 Sec.
Longitude 9300 Feet West of 81 Deg. 40 Min. 0 Sec.

Company: COLUMBIA GAS TRANSMISSION
P. O. BOX 1273
CHARLESTON, WV 25325-1273

Casing & Tubing Size	Used in Drilling	Left in Well	Cement Fill Up Cu. Ft.
13-3/8", 48 lb.		724'	
10-3/4", 48 lb.		1230'	
8-5/8", 28 lb.		2175'	22 sx
7", 24 lb.		4915'	12 sx
4-1/2", 12.6 lb		4982'	820 sx

Agent: RICHARD L. COTY

Inspector: HOMER DOUGHERTY
Permit Issued: 05/14/99
Well work Commenced: 07/22/99
Well work Completed: 08/25/99
Verbal Plugging
Permission granted on: _____
Rotary Cable Rig
Total Depth (feet) 5030'
Fresh water depths (ft) _____
Not reported
Salt water depths (ft) 695' - 700',
1780'
Is coal being mined in area (Y/N)? No
Coal Depths (ft): Not Reported

OPEN FLOW DATA * Storage well - rates and pressures vary.

Producing formation Oriskany Pay zone depth (ft) 5008' - 5030'
Gas: Initial open flow N/A MCF/d Oil: Initial open flow N/A Bbl/d
Final open flow N/A MCF/d Final open flow N/A Bbl/d
Time of open flow between initial and final tests N/A Hours
Static rock Pressure N/A psig (surface pressure) after N/A Hours

Second producing formation _____ Pay zone depth (ft) _____
Gas: Initial open flow _____ MCF/d Oil: Initial open flow _____ Bbl/d
Final open flow _____ MCF/d Final open flow _____ Bbl/d
Time of open flow between initial and final tests _____ Hours
Static rock Pressure _____ psig (surface pressure) after _____ Hours

NOTE: ON BACK OF THIS FORM PUT THE FOLLOWING: 1). DETAILS OF PERFORATED INTERVALS, FRACTURING OR STIMULATING, PHYSICAL CHANGE, ETC. 2). THE WELL LOG WHICH IS A SYSTEMATIC DETAILED GEOLOGICAL RECORD OF ALL FORMATIONS, INCLUDING COAL ENCOUNTERED BY THE WELLBORE.

For: COLUMBIA GAS TRANSMISSION CORP.
By: Paul Amick Paul Amick/ Sr. Storage Eng.
Date: October 11, 1999

OCT 25 1999

JAC 0517 F

Cleaned out to TD with coiled tubing, replaced top joint of 4-1/2" casing and installed new API 7" x 4-1/2" 5M wellhead and pumped and N2-Assist Deltafrac Treatment using 500 gallons of 28% HCL, 432 bbls of water, 143 MSCF N2 and 27,400 lbs of 20/40 sand.