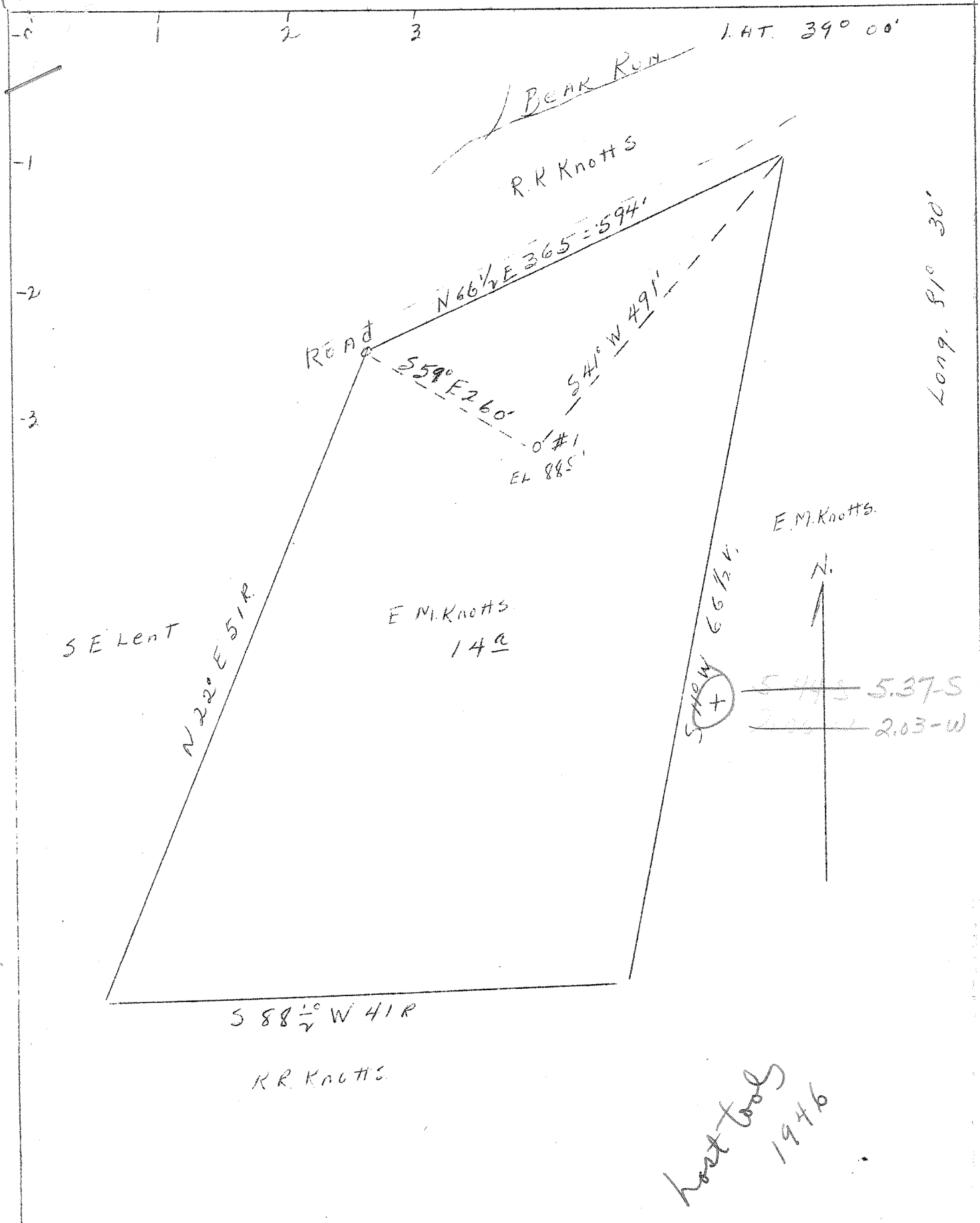


5M



NEW LOCATION X

Formerly JAC-481-R

COMPANY	BEAR RUN OIL & GAS CO.
ADDRESS	PARKERSLUGG, W. VA.
FARM	E. M. KNOTTS
TRACT	ACRES 14 LEASE NO.
WELL (FARM) NO.	SERIAL NO.
ELEVATION (SPIRIT LEVEL)	885
QUADRANGLE	RIPLEY
COUNTY	JACKSON DIST. RAVENSWOOD
ENGINEER	O. MEREDITH
ENGINEER'S REGISTR. NO.	
FILE NO.	DRAWING NO.
DATE 2/28/46	SCALE 10 RODS 1"

STATE OF WEST VIRGINIA  
 DEPARTMENT OF MINES  
 OIL AND GAS DIVISION  
 CHARLESTON, W. VA.  
 WELL LOCATION MAP  
 FILE NO. JAC 530

+ DENOTES LOCATION OF WELL ON U.S. TOPOGRAPHIC MAPS, SCALE 1 TO 62,500 LATITUDE AND LONGITUDE LINES BEING REPRESENTED BY BORDER LINES AS SHOWN

- DENOTES ONE INCH SPACES ON BORDER LINE OF ORIGINAL TRACING.

5-2 200

WEST VIRGINIA DEPARTMENT OF MINES  
OIL & GAS DIVISION  
W E L L R E C O R D

Permit No. Jac 530  
Ripley Quad.  
Company  
Address  
Farm  
Location  
Well No.  
District  
Surface  
Mineral  
Commenced  
Completed  
Fresh Water  
Salt Water

Bear Run Oil & Gas Co.  
Charleston, W.Va.  
E.M. Knotts Acres 14-A  
Bear Run  
One Elev. 829  
Ravenswood Jackson County  
E.M. Knotts, Leroy, W.Va.  
Same  
Sept. 24, 1946  
Well shut down Oct. 23, 1946  
170'  
612' 4 bailers

Gas Well  
CASING & TUBING

13 Cond. 12 12  
10 325

No coal was found in  
well.

Red Rock & Shale	0	20	
Sand	20	40	
Red Rock & Lime Sh	60	364	
Sand	364	394	
Red Rock & Shells	394	550	
Slate & Shells	550	607	
1st Pittsburgh Sand	607	693	
Red Lime and Shells	693	790	
2nd Pittsburg Sand	790	820	
Blue Clay and Lime	820	895	
Sand	895	915	
Slate	915	917	Not through slate

Tools lost at 917. Hole caving badly. Tools covered up. Water in hole.

Total Depth of hole 917