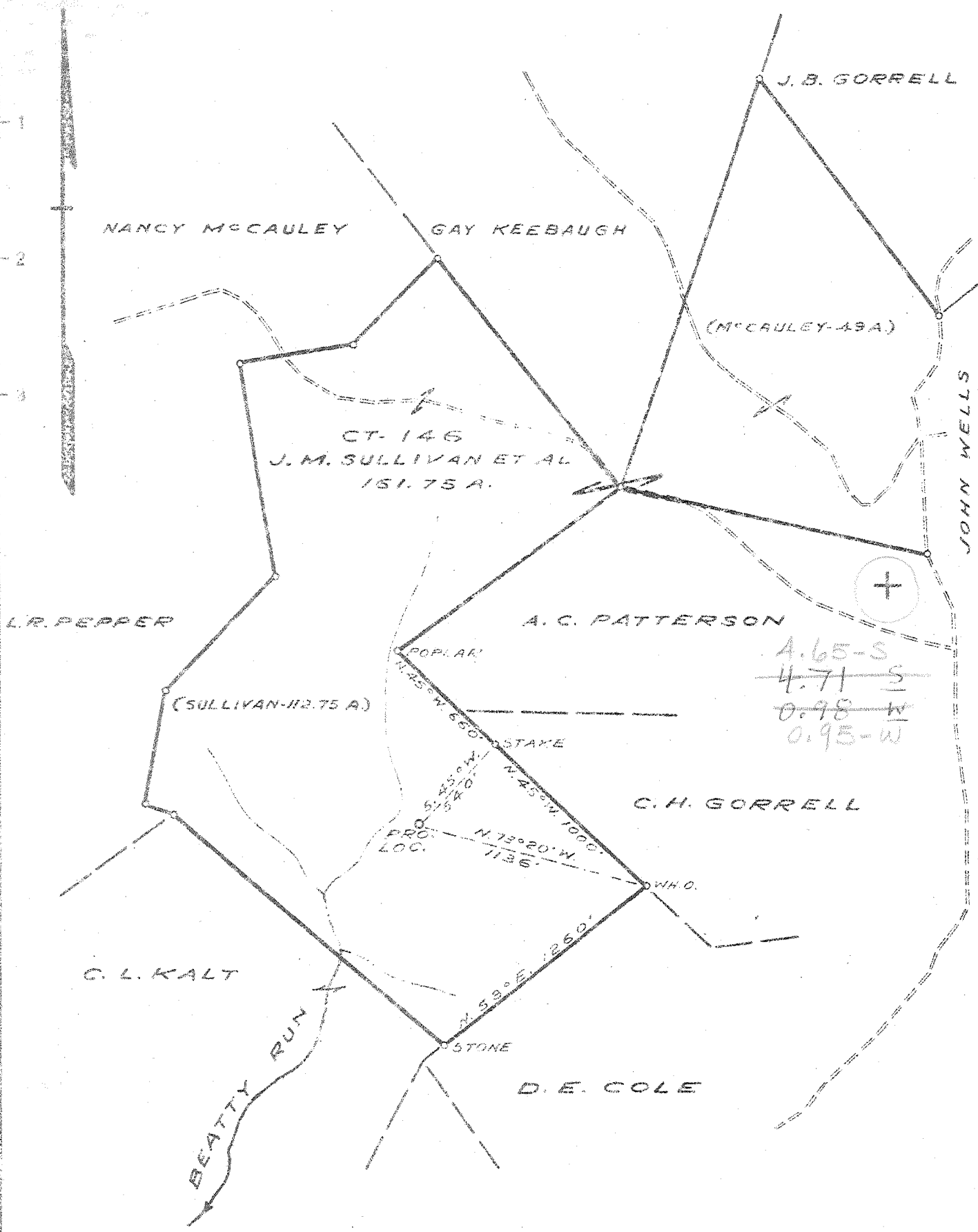


Latitude 39 00

Longitude 81 40



New Location **X**
 Drill Deeper
 Abandonment

Company COLUMBIAN CARBON CO.
 Address CHARLESTON W. VA.
 Farm J. M. SULLIVAN ET AL
 Tract _____ Acres 151.75 Lease No. CT-146
 Well (Farm) No. 1 Serial No. _____
 Elevation (Spirit Level) 811.6
 Quadrangle RIPLEY NW 3-460-095
 County JACKSON District RAYENSWOOD
 Engineer [Signature]
 Engineer's Registration No. 772
 File No. _____ Drawing No. 405
 Date NOV 13, 1946 Scale 1" = 550'

STATE OF WEST VIRGINIA
 DEPARTMENT OF MINES
 OIL AND GAS DIVISION
 CHARLESTON

WELL LOCATION MAP
 FILE NO. JAC-542

+ Denotes location of well on United States Topographic Maps, scale 1 to 62,500, latitude and longitude lines being represented by border lines as shown.

- Denotes one inch spaces on border line of original tracing.

Deep Well

WEST VIRGINIA DEPARTMENT OF MINES
OIL & GAS DIVISION
W E L L R E C O R D

Permit No. Jac 542
Ripley Quad.
Company
Address
Farm
Location
Well No.
District
Surface
Mineral
Commenced
Completed
Date shot

Dry Hole
CASING & TUBING

Columbian Carbon Company
Box 873, Charleston 23, W.Va. 16 28 28
J.M. Sullivan A 161.75 13 3/8 751'9
Beatty Run 10 1/2 1253'8 0
1 (GW-933) Elev. 811.6 G 8 5/8 2145'7 0
Ravenswood Jackson County 7 4897'10 31'3
J.M. Sullivan, Glenshaw, Pa.

Volume
Fresh Water 425' 2 blrs. per hr.; 660' 5 blrs. per hr.
Salt Water 1212' 2 blrs. per hr.; 1260' H.F.

Red Rock	0	20	Brown Shale	4580	4842	SLM
Blue Slate	20	40	Corniferous Lime	4842	4954	SLM
Red Rock	40	60	Oriskany Sand	4954	4974	
White Slate	60	100	Lime	4974	4984	
Red Rock	100	130	Oriskany Sand	4984	4993	
Slate	130	145	Lime	4993	5034	
Red Rock	145	170	Total Depth		5034	
Slate	170	190				
Red Rock	190	260	Gas 4565 show			
Slate	260	270				
Red Rock	270	310	Dry Hole-Plugged and abandoned 6-5-47			
Slate	310	330				
Red Rock	330	400	CEMENT RECORD:			
Slate	400	425	12-23-46 13 3/8" casing. Ran 19 sacks			
Sand	425	440	aquagel and 1 bag fibrotex. Circulation			
Slate	440	480	and returns.			
Lime	480	495	1-3-47 10 3/4" casing. Ran 23 sacks aquagel			
Red Rock	495	520	and 1 bag fibrotex. No returns.			
Sand	520	540	1-23-47 8 5/8" casing. Ran 23 sacks			
Slate	540	550	aquagel and 1 bag Fibrotex. Circulation			
Lime	550	580	and returns.			
Red Rock	580	635	2-27-47 7" casing. Ran 50 sacks			
Slate	635	645	aquagel and 4 bales fibrotex. Circulation			
Sand - 1/2 R.H. Sand?	645	670	No returns.			
Shell Slate	670	850				
Red Rock	850	890	C.G.Co. Crew.			
Slate & Shells	890	920				
Red Rock	920	945				
Lime	945	970				
Slate	970	1020				
Red Rock	1020	1185				
Sand	1185	1245				
Shell	1245	1255				
Sand	1255	1294				
Slate	1294	1450				
Sand	1450	1510				
Slate	1510	1620				
Sand	1620	1628				
Slate	1628	1708				
Black Lime	1708	1748				
Sand	1748	1895				
Big Lime	1895	1975				
Sand - Inj.?	1975	1985				
Slate	1985	2090				
Slate & Shells	2090	2440				
Brown Shale - C. H. Sh.	2440	2460				
Shells - Berea Horizon	2460	2475				
Slate	2475	3680				
Brown Shale - 441	3680	3885	Gas 3240 show			
Slate & Shells	3885	4020				
Brown Shale	4020	4216				
White Slate	4216	4345				
Brown Shale	4345	4380				
Gray Shale	4380	4580				

4842 4954 4993
 814 814 814

 4028 4140 4179