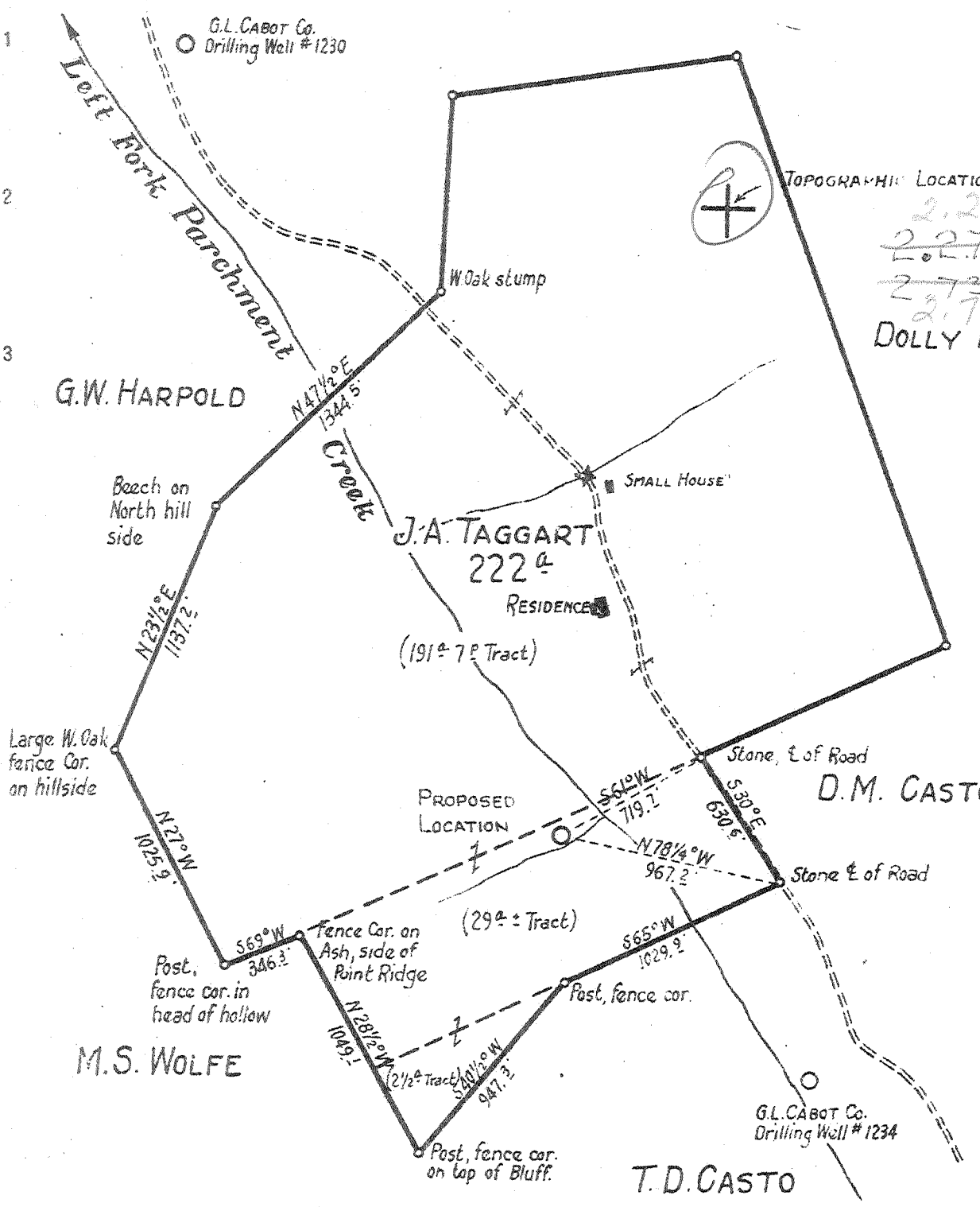


G.W. HARPOLD

G.L. CABOT Co.  
Drilling Well #1230

TOPOGRAPHIC LOCATION  
 2.26-S  
 2.27-S  
 2.73-W  
 2.70-W  
 DOLLY PARSONS

Longitude 81 40



New Location X  
 Drill Deeper  
 Abandonment

Company WEST VIRGINIA GAS CORPORATION  
 Address P.O. Box 1433 CHARLESTON 25, W. VA.  
 Farm J.A. TAGGART ET AL  
 Acreage 222± Acres Lease No. 1259  
 Well (Farm) No. 1 Serial No. 547  
 Elevation (Spirit Level) 685.46 (GROUND)  
 Quadrangle KENNA N.W.  
 County JACKSON District RIPLEY  
 Engineer W.S. GRAVELY  
 Engineer's Registration No. \_\_\_\_\_  
 File No. \_\_\_\_\_ Drawing No. \_\_\_\_\_  
 Date MAY 15, 1947 Scale 1" = 660'

STATE OF WEST VIRGINIA  
 DEPARTMENT OF MINES  
 OIL AND GAS DIVISION  
 CHARLESTON

WELL LOCATION MAP  
 FILE NO. JAC-555

+ Denotes location of well on United States Topographic Maps, scale 1 to 62,500, latitude and longitude lines being represented by border lines as shown.  
 - Denotes one inch spaces on border line of original tracing.

Deep well 6-0-192

WEST VIRGINIA DEPARTMENT OF MINES  
OIL & GAS DIVISION  
W E L L R E C O R D

Permit No. Jac 555		Gas Well
Kenna Quad.		casing & tubing
Company	West Virginia Gas Corp.	
Address	Box 1433, Charleston, W.Va.	16 28
Farm	J.A. Taggart Acres 222	13 3/8 371
Location	Left Fork Parchment Creek	10 1/2 1016
Well No.	1 serial No. 547 Elev. 685.46	8 5/8 2042 2042
District	Ripley Jackson County	7 4812 4812
Surface	J.A. Taggart, Ripley, W.Va.	2 3/8 4947
Mineral	Same	
Commenced	June 12, 1947	No Packer
Completed	Oct. 28, 1947	Perf. top 4937
Date shot	Oct. 28, 1947 Depth 4914 to <u>4944</u> with 80 qts. gly.	bot 4942
Open flow	24/10ths W in 2" <i>21 WAF</i>	Casing cemented:
Rock Pressure	1260 lbs. 24 hrs.	10" size 7"
Oil	None	25 bags aquagel
Fresh Water	45'	behind 8 5/8" casing
Salt Water	1077'	Coal at 712'

Clay	0	20
Lime Shell	20	30
Sand	30	50
Red Rock	50	125
Lime	125	135
Red Rock	135	170
Sand	305	315
Red Rock	315	365
Slate & Shells	365	495
Red Rock	495	625
Sand	625	640
W. Slate	640	712
✓Coal	712	715
W. Slate	715	795
Sand	795	815
Slate	815	925
Sand	925	930
Slate	930	965
Sand	965	1040
Slate & Shells	1040	1100
✓Sand Dunkard	1100	1135
Slate	1135	1175
✓Sand Salt	1175	1235
Slate Shell	1235	1370
Sand	1370	1400
Slate Shells Dk	1400	1505
✓Salt Sand	1505	1712
✓Big Lime	1712	1875
✓Keener Sand	1875	1900
✓Injun Sand	1900	2008
Slate & Shells	2008	2040
Lime Sand	2040	2055
✓Weir Sand	2055	2140
Slate & Shells	2140	2360
✓Brown Shale	2360	2375
✓Berea Sand	2375	2400
Slate & Shells	2400	2450
Shells	2450	2700
Slate & Shells	2700	3375
✓Dark Brown Shale	3375	3425
Brown Shale	3425	3610
Brown Shale	3610	3725
White Shale	3725	3820
Brown Shale	3820	3880
White Slate	3880	3895
Brown Shale	3895	3975
White Slate	3975	4530
Brown Shale	4530	4578
Slate & Shells	4578	4735
Coffee Shale	4735	4812

*Drill hole 4812 to 4944  
Casing 4944 to 4944  
D 41347*

*From casing info. above.*

*F-21634*