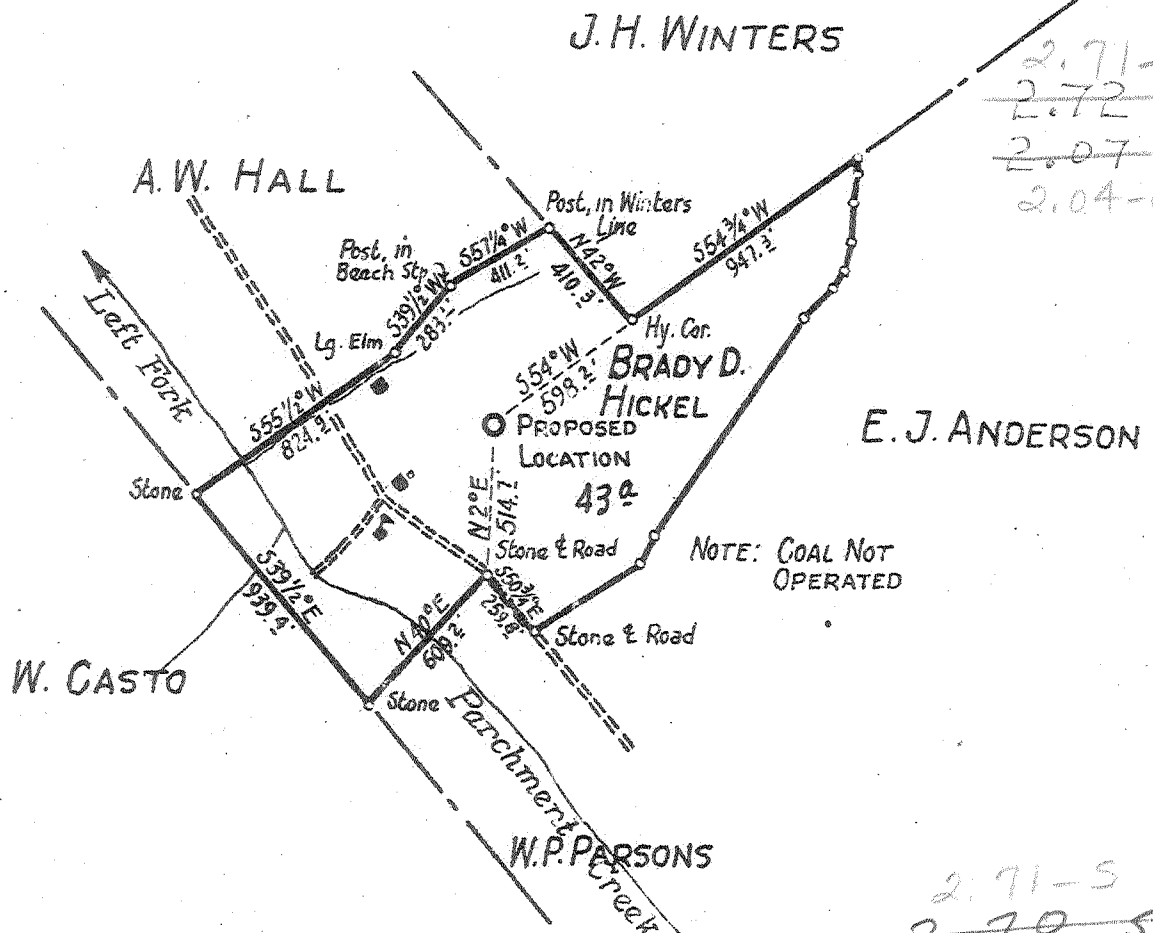


Latitude 38 45

Longitude 81 40



2.71-5
~~2.72~~
~~2.07~~
 2.04-W

2.71-5
~~2.70-5~~
~~2.07 W.~~
~~2.04-W~~
 3C (I-5)

New Location
 Drill Deeper
 Abandonment

Company WEST VIRGINIA GAS CORPORATION
 Address P.O. Box 1433, CHARLESTON 25, W. VA.
 Farm BRADY D. HICKEL
 Tract _____ Acres 43 Lease No. 1257
 Well (Farm) No. 1 Serial No. 548
 Elevation (Spirit Level) 837.23' (GROUND)
 Quadrangle KENNA-N.W.
 County JACKSON District RIPLEY
 Engineer W.S. GRAVELY
 Engineer's Registration No. _____
 File No. _____ Drawing No. _____
 Date JULY 11, 1947 Scale 1" = 660'

STATE OF WEST VIRGINIA
 DEPARTMENT OF MINES
 OIL AND GAS DIVISION
 CHARLESTON

WELL LOCATION MAP

FILE NO. JAC-562

+ Denotes location of well on United States Topographic Maps, scale 1 to 62,500, latitude and longitude lines being represented by border lines as shown.

- Denotes one inch spaces on border line of original tracing.

DEEP WELL

WEST VIRGINIA DEPARTMENT OF MINES
OIL & GAS DIVISION
W E L L R E C O R D

Permit No. Jac 562
Kenna Quad.
Company
Address
Farm
Location
Well No.
District
Surface
Mineral
Commenced
Completed
Not shot
Open flow
Water

West Virginia Gas Corporation
P.O. Box 1433, Charleston 25, W.Va.
Brady D. Hickel A 43

1 Serial No. 548 Elev. 837.23
Ripley Jackson County
Brady D. Hickel, Given, W.Va.
Same
July 29, 1947
Jan. 17, 1948

None
1357'

Dry Hole
CASING & TUBING

13 3/8 536'11
10 1/2 1220'4
8 5/8 2040'3
7 5030'3

Casing cemented:
7" 450' 1-1-48

No coal

Clay	0	25	Sand	1456	1493
Sand	25	28	Slate	1493	1530
Red Rock	25	100	Sand	1530	1545
Black Slate	100	110	Slate	1545	1653
Red Rock	110	155	Salt Sand	1653	1864
Sand	155	165	Big Lime	1864	2020
Red Rock	165	175	Slate	2020	2024
Slate & Shell	175	185	Keener Sand	2024	2038
Red Rock	185	200	Slate	2038	2058
Shell	200	210	Injun Sand	2058	2172
Sand	210	235	Lime Shell	2172	2177
Black Slate	235	238	Blue Mud	2177	2195
Shell	238	255	Slate & Shells	2195	2220
Slate	255	295	Weir Sand	2220	2285
Shell	295	302	Slate & Shells	2285	2529
Red Rock	302	320	Berea Sand	2529	2548
Shell	320	330	Slate & Shells	2548	3749
Black Slate	330	335	Brown Shell - 441	3749	3840
Sand	335	350	Slate	3840	3897
Red Rock	350	385	Lime Shells	3897	3980
Shell	385	410	Slate	3980	4005
Black Slate	410	420	Brown Shells	4005	4293
Red Rock	420	535	Shells	4292	4350
Black Slate	535	540	Slate & Shells	4350	4538
Sand	540	545	Shells	4538	4648
Black Slate	545	575	Slate	4648	4750
Red Rock	575	585	Coffee Shale - BROWN	4750	4820
Shell	585	592	Slate	4820	4865
Black Slate	592	620	Coffee Shell - BROWN	4865	4955
Red Rock	620	655	Corniferous Lime - 463	4988	5089
Black Slate	655	660	Oriskany Sand	5089	5148
Red Rock	660	675	Total Depth	5148	5148
Black Slate	675	684			
Red Rock	684	715	Gas 2068' show		
Shell	715	725	Gas 2534 smell of gas		
Red Rock	725	730	Gas 3755' smell of gas		
Sand	730	764			
Red Rock	764	775			
Black Slate	775	781			
Red Rock	781	787			
Shell	787	795			
Black Slate	795	808			
Red Rock	808	820			
Black Slate	820	850			
Sand	850	870			
Black Slate	870	945			
Sand	945	955			
Black Slate	955	1100			
Sand	1100	1130			
Slate	1130	1140			
Sand H	1140	1195			
Slate	1195	1320			
Sand	1320	1384			
Slate	1384	1408			
Sand	1408	1430			
Slate	1430	1456			

4988
837
4151