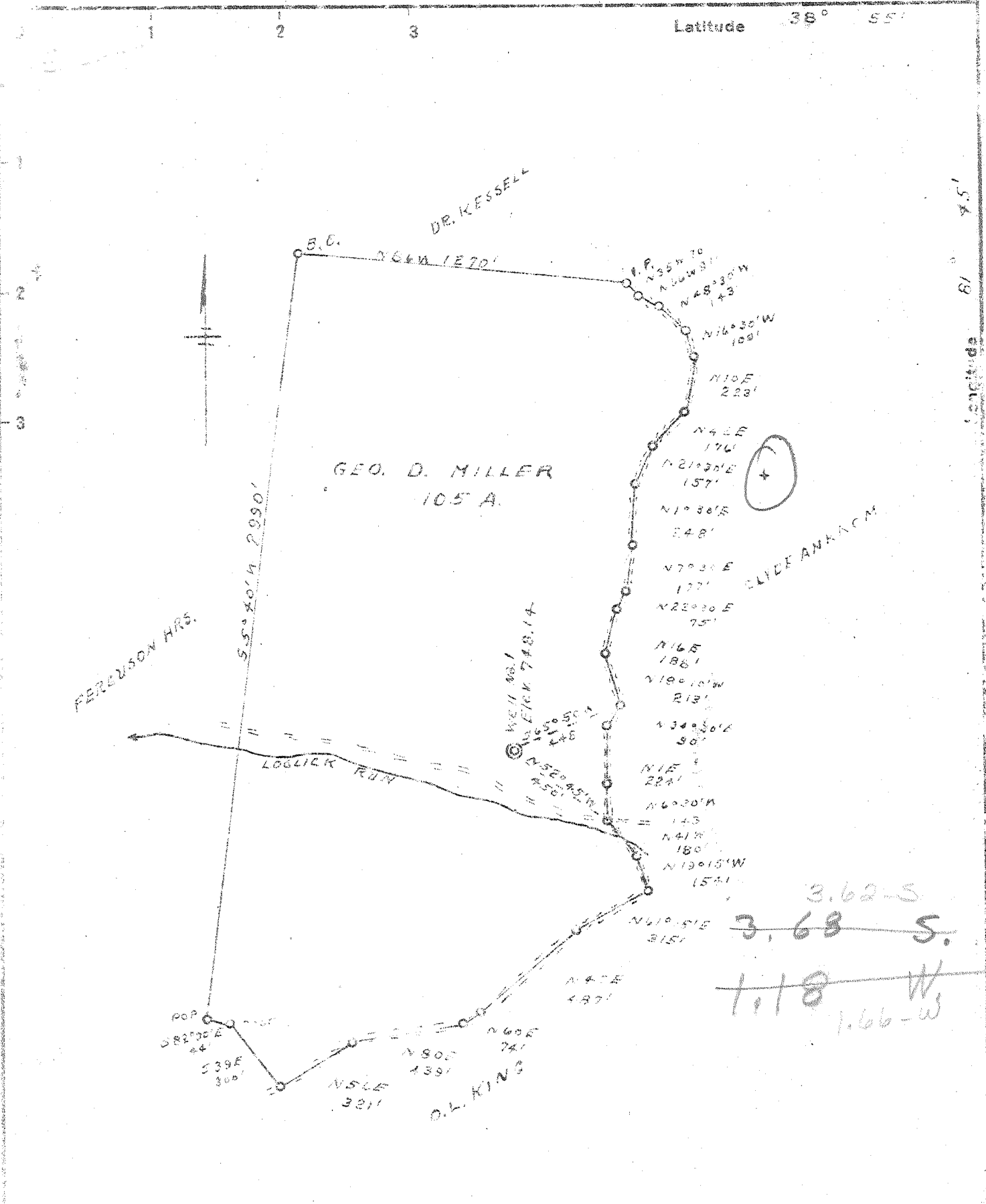


P



New Location
 Drill Deeper
 Abandonment

6 C (H-4)

Company E. M. REYNOLDS
 Address RIPLEY, W.VA.
 Farm GEO. D. MILLER
 Tract _____ Acres 105 Lease No. _____
 Well (Farm) No. 1 Serial No. _____
 Elevation (Spirit Level) 748.14
 Quadrangle RAVENSWOOD - EC
 County JACKSON District UNION
 Engineer R. F. Rye
 Engineer's Registration No. 804
 File No. _____ Drawing No. _____
 Date 11-22-48 Scale 1" = 500'

STATE OF WEST VIRGINIA
 DEPARTMENT OF MINES
 OIL AND GAS DIVISION
 CHARLESTON.

WELL LOCATION MAP
 FILE NO. JAC-653

+ Denotes location of well on United States
 Topographic Maps, scale 1 to 62,500, lat-
 itude and longitude lines being represented
 by border lines as shown.
 - - Denotes one inch spaces on border line
 of original tracing.

SAMPLES 15-A (4557-4600) 1 1/2 Deep Well

WEST VIRGINIA DEPARTMENT OF MINES
OIL & GAS DIVISION
WELL RECORD

Permit No. Jac 653		Gas Well	
Ravenswood Quad.		CASING & TUBING	
Company	E.M. Reynolds		
Address	Ripley, W. Va.	13	14
Farm	G.D. Miller Acres 105	10	650
Location	Log Lick	8½	1104 90
Well No.	1 Elev. 748	7 OD	2005 2005
District	Union Jackson County	2	4600
Surface	G.D. Miller, Cottageville		
Mineral	Same		Coal at 550' to 558'
Commenced	Dec. 1948		
Completed	April 1949		
Date shot	4-2-49 Depth 4566-4588-90 qts. glycerine		
	2951-2961-40 qts. glycerine		
Open flow	27/10ths W in 2"		
Volume	219,000 cu. ft.		
Rock Pressure	600 lbs. 48 hrs.		
Fresh Water	480-530'1 bailer per hr.		
Salt Water	H.F. 1275-1350'		

Red Rock	S	0	14
Slate Bl	S	14	60
Red Rock	S	60	190
Sand Wh	H	190	230
Red Rock	S	230	310
Sand Wh	H	310	340
Red Rock	S	340	380
Slate Bl	S	380	400
Red Rock	S	400	450
Slate Bl	S	450	480
Sand Wh	H	480	530
Slate Bl	S	530	550
Coal Blk		550	558
Slate Bl	S	558	600
Sand Wh	H	600	640
Slate Bl	S	640	645
Red Rock	S	645	675
Sand Wh	H	675	715
Red Rock	S	715	765
Slate & Shells	H	765	925
Red Rock	S	925	945
Slate & Shells	Dk H	945	985
Sand Wh	H	985	1140
Slate & Shells	Dk H	1140	1165
Sand Wh	H	1165	1230
Slate & Shells	Dk H	1230	1275
Sand Wh	H	1275	1350
Slate Dk	S	1350	1375
Sand Wh	H	1375	1385
Slate Blk	S	1385	1480
Sand Wh	H	1480	1510
Slate & Shells	Dk H	1510	1590
Sand Wh	H	1590	1675
Pencil Cave	S	1675	1685
Big Lime Wh	H	1685	1790
Injun Sand	H	1790	1925
Slate & Shells	Dk H	1925	2297
Berea Sand	H	2297	2300
Slate & Shells	Dk H	2300	2640
White Slate & Shells	H	2640	3450
Shale Br	S	3450	3550
Slate & Shells	Dk S	3550	3690
Shale Br	S	3690	3925
Slate Wh	S	3925	4300
Shale Br	S	4300	4475
Corniferous Lime Wh	H-463	4475	4568
Criskany Sand Wh	H	4568	4600

475