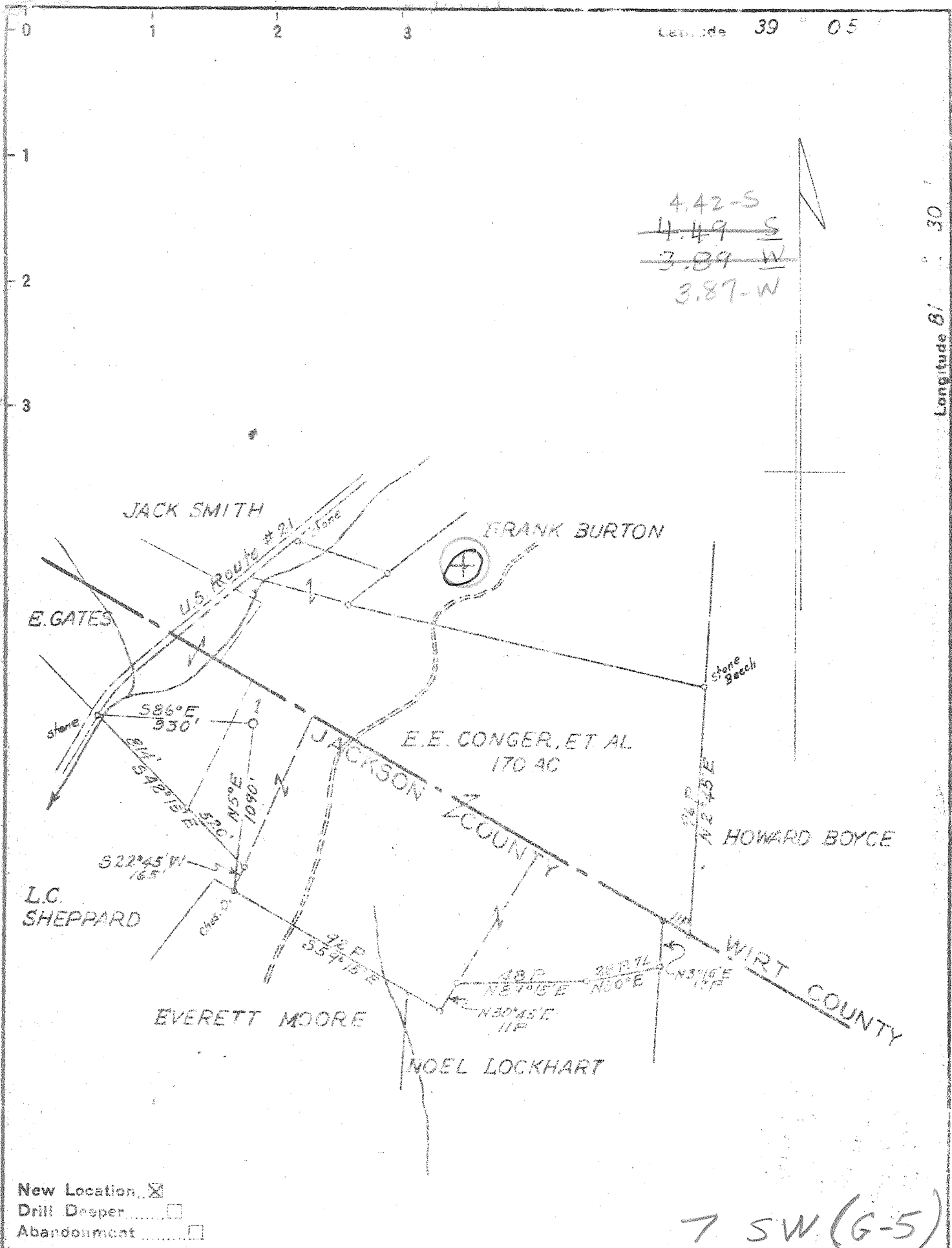


P



Company DAVIS - KELLY GAS COMPANY  
 Address PARKERSBURG, WEST VIRGINIA  
 Farm E. E. CONGER, ET AL  
 Tract \_\_\_\_\_ Acres 170 Lease No. \_\_\_\_\_  
 Well (Farm) No. 1 Serial No. \_\_\_\_\_  
 Elevation (Spirit Level) 853.55  
 Quadrangle BELLEVILLE - SE  
 County JACKSON District GRANT  
 Engineer Wm. S. Hayes  
 Engineer's Registration No. 1429  
 File No. \_\_\_\_\_ Drawing No. \_\_\_\_\_  
 Date JAN. 9, 1950 Scale 1"=800'

STATE OF WEST VIRGINIA  
 DEPARTMENT OF MINES  
 OIL AND GAS DIVISION  
 CHARLESTON

WELL LOCATION MAP  
 FILE NO. JAC-695

+ Denotes location of well on United States Topographic Maps, scale 1 to 62,500, latitude and longitude lines being represented by border lines as shown.  
 - Denotes one inch spaces on border line of original tracing.

No driller's log (turn over) 5-3 279 Deep Well





STATE OF WEST VIRGINIA  
DEPARTMENT OF MINES  
OIL AND GAS DIVISION

WELL RECORD

Permit No. Jack-695

Oil or Gas Well Dry  
(KIND)

Company Lavis-Kelly Gas Co.,  
Address 2108 Dudley Ave. Parkersburg, W. Va.  
Farm E. E. Conger Acres 170  
Location (waters) Sandy Creek  
Well No. 1 Elev. 864  
District Grant County Jackson  
The surface of tract is owned in fee by E. E. Conger  
et-al Address Windy, W. Va.  
Mineral rights are owned by Same  
Address \_\_\_\_\_

Drilling commenced February 23rd 1950  
Drilling completed May 13th "  
Date Shot \_\_\_\_\_ From \_\_\_\_\_ To \_\_\_\_\_  
With \_\_\_\_\_  
Open Flow \_\_\_\_\_ /10ths Water in \_\_\_\_\_ Inch  
\_\_\_\_\_ /10ths Merc. in \_\_\_\_\_ Inch  
Volume \_\_\_\_\_ Cu. Ft.  
Rock Pressure \_\_\_\_\_ lbs. \_\_\_\_\_ hrs.  
Oil \_\_\_\_\_ bbls., 1st 24 hrs.  
Fresh water \_\_\_\_\_ feet \_\_\_\_\_ feet  
Salt water 1520 feet 5164 feet

Casing and Tubing	Used in Drilling	Left in Well	Packers
Size			
16			Kind of Packer
18			
10	780	All	Size of
8 1/4	1220	"	
6 1/2	2189	"	Depth set
5 3/16	5057	"	
3			Perf. top
2			Perf. bottom
Liners Used			Perf. top
			Perf. bottom

CASING CEMENTED \_\_\_\_\_ SIZE 5-3/16 Ft. 300 Dat \_\_\_\_\_

COAL WAS ENCOUNTERED AT \_\_\_\_\_ FEET \_\_\_\_\_ INCHES  
\_\_\_\_\_ FEET \_\_\_\_\_ INCHES \_\_\_\_\_ FEET \_\_\_\_\_ INCHES  
\_\_\_\_\_ FEET \_\_\_\_\_ INCHES \_\_\_\_\_ FEET \_\_\_\_\_ INCHES

Formation	Color	Hard or Soft	Top	Bottom	Oil, Gas or Water	Depth Found	Remarks
Slate, shells and Red Sand			0	674			
Slate, Shells			674	763			
Sand			763	820			
Slate			820	854			
Red Rock			864	862			
Slate and shells			862	970			
Cristty Lime			970	1044			
Pink Rock			1044	1063			
Slate			1063	1128			
Pink Rock			1128	1178			
slate and shells			1178	1186			
Sand			1186	1210			
Lime			1210	1245			
Sand			1245	1270			
Sand			1270	1285			
Slate and shells			1285	1408			
Sand			1408	1483			
Slate			1483	1518			
Sand			1518	1560	Water	1520	Hole full
Slate			1560	1586			
Sand			1586	1620			
Slate			1620	1680			
Sand			1680	1730			
Lime			1730	1749			
Slate			1749	1791			
Sand			1791	1881			
Lime			1881	1866			
Sand			1866	1952			
Lime			1952	2049			
Sand			2049	2085			



Formation	Color	Hard or Soft	Top	Bottom	Oil, Gas or Water	Depth Found	Remarks
Lime			2085	2110			
Slate			2110	2116			
Lime			2116	2214			
Slate and shells			2214	2485			
Hard Lime			2485	2498			
Slate and Shells			2498	4755			
Brown Shale			4755	5026			
Black Slate			5026	5038			
Cor. Lime			5038	5164			
Criskany Sand			5164	5169			
							Filled up with water 700' 5 Hours

Date 5/13 - 1850

APPROVED Davis Kelly Gas Co, Owner

By A. P. Kelly (title)