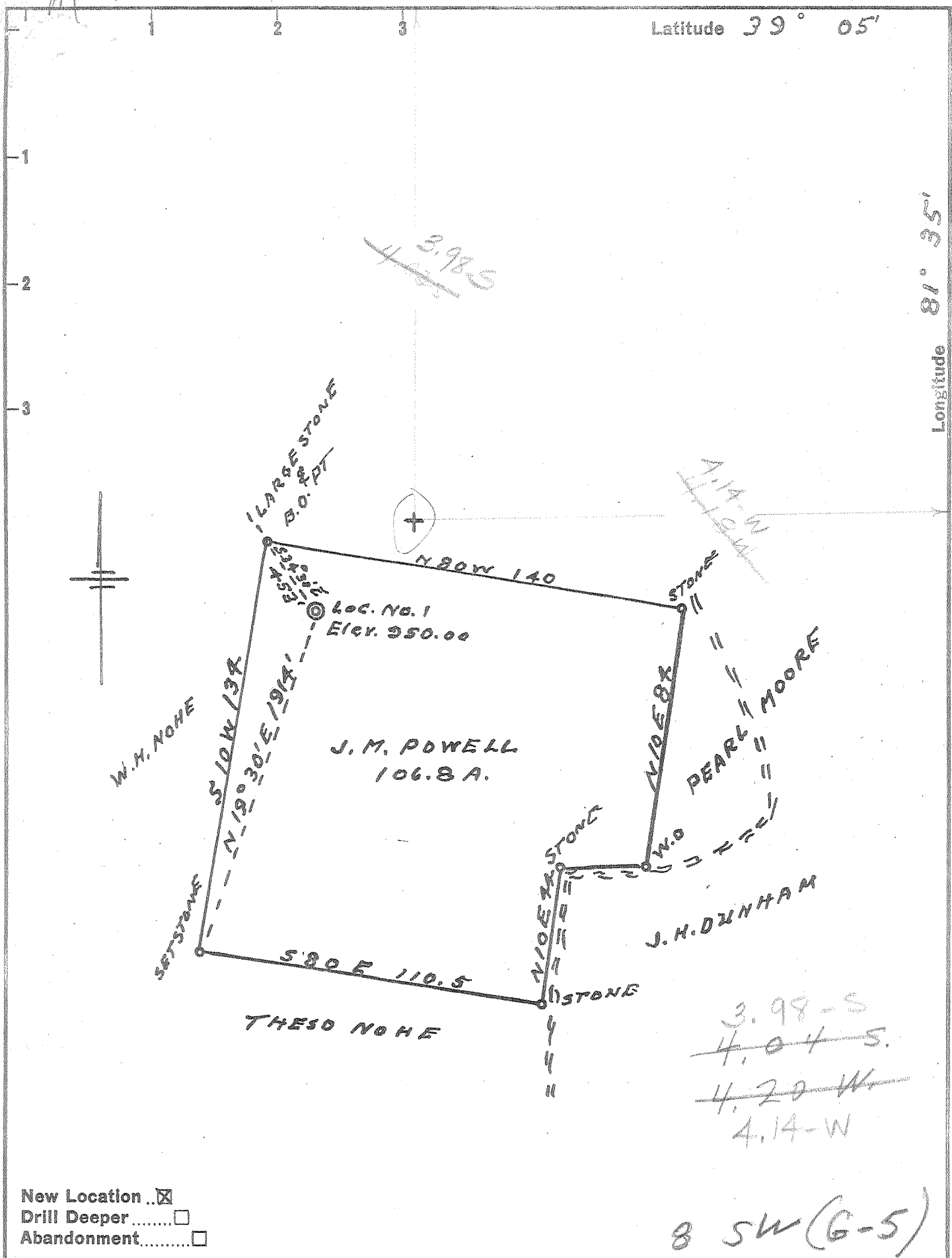


P

Latitude 39° 05'

Longitude 81° 35'



New Location    
 Drill Deeper    
 Abandonment

Company KRENNERMAN OIL & GAS CO.  
 Address 307 W NEWCASTLE ST., ZELIENOPLE, PA.  
 Farm J. M. POWELL  
 Tract \_\_\_\_\_ Acres 106.8 Lease No. \_\_\_\_\_  
 Well (Farm) No. 1 Serial No. \_\_\_\_\_  
 Elevation (Spirit Level) 950.00  
 Quadrangle BELLEVILLE SC  
 County JACKSON District GRANT  
 Engineer L. F. Dye  
 Engineer's Registration No. 804  
 File No. \_\_\_\_\_ Drawing No. \_\_\_\_\_  
 Date 9-3-58 Scale 1" = 40 POLES

STATE OF WEST VIRGINIA  
 DEPARTMENT OF MINES  
 OIL AND GAS DIVISION  
 CHARLESTON

WELL LOCATION MAP  
 FILE NO. JAC-982

+ Denotes location of well on United States Topographic Maps, scale 1 to 62,500, latitude and longitude lines being represented by border lines as shown.  
 - Denotes one inch spaces on border line of original tracing.

66 (256) Deep Well ✓ E 59



STATE OF WEST VIRGINIA  
DEPARTMENT OF MINES  
OIL AND GAS DIVISION 7

Quadrangle BELLVILLE

WELL RECORD

Permit No. 982-gal.

Oil or Gas Well GAS  
(KIND)

Company KRENNERMAN OIL & GAS CO.  
Address ZELIENOPLE PA.  
Farm PAWELL, G.M. Acres 112  
Location (waters) Δ  
Well No. 1 Elev. 950  
District GRANT County JACKSON  
The surface of tract is owned in fee by J.  
Address SHERMAN  
Mineral rights are owned by \_\_\_\_\_  
Address SHERMAN  
Drilling commenced Sept 15, 1958  
Drilling completed March 13, 1959  
Date Shot \_\_\_\_\_ From \_\_\_\_\_ To \_\_\_\_\_  
With Fractured No Results  
Open Flow \_\_\_\_\_ /10ths Water in \_\_\_\_\_ Inch  
\_\_\_\_\_ /10ths Merc. in \_\_\_\_\_ Inch  
Volume 321,000 Cu. Ft.  
Rock Pressure 1500 lbs. 20 hrs.  
Oil \_\_\_\_\_ bbls., 1st 24 hrs.  
Fresh water \_\_\_\_\_ feet \_\_\_\_\_ feet  
Salt water \_\_\_\_\_ feet \_\_\_\_\_ feet

| Casing and Tubing | Used in Drilling | Left in Well | Packers        |
|-------------------|------------------|--------------|----------------|
| Size              |                  |              | Kind of Packer |
| 16                |                  |              |                |
| 13                | <u>110'</u>      |              |                |
| 10                | <u>790'</u>      |              | Size of        |
| 8 1/2             | <u>1460</u>      |              |                |
| 6 1/2             |                  | <u>1958'</u> | Depth set      |
| 5 3/16            |                  | <u>4859"</u> |                |
| 3                 |                  |              | Perf. top      |
| 2                 |                  | <u>4847</u>  | Perf. bottom   |
| Liners Used       |                  |              | Perf. top      |
|                   |                  |              | Perf. bottom   |

CASING CEMENTED YES SIZE 5 1/2 No. Ft. \_\_\_\_\_ Date \_\_\_\_\_

COAL WAS ENCOUNTERED AT \_\_\_\_\_ FEET \_\_\_\_\_ INCHES  
\_\_\_\_\_ FEET \_\_\_\_\_ INCHES FEET \_\_\_\_\_ INCHES  
\_\_\_\_\_ FEET \_\_\_\_\_ INCHES FEET \_\_\_\_\_ INCHES

| Formation               | Color | Hard or Soft | Top  | Bottom | Oil, Gas or Water | Depth Found | Remarks |
|-------------------------|-------|--------------|------|--------|-------------------|-------------|---------|
| Red Rock                |       | Soft         | 0    | 17     |                   |             |         |
| SLATE                   |       | "            | 17   | 50     |                   |             |         |
| Red Rock                |       | "            | 50   | 457    | water 1/2         |             |         |
| Sand - 1 1/2 Pits. Sand |       | Hard         | 457  | 525    | 13W. 490          |             |         |
| Red Rock                |       | Soft         | 425  | 535    |                   |             |         |
| Lime Shell              |       | Hard         | 535  | 550    |                   |             |         |
| Red Rock                |       | Soft         | 550  | 645    | 7BW 724           |             |         |
| Sand - 1 1/2 Pits. Sand |       | Hard         | 645  | 775    | 13B.W. 755        |             |         |
| Red Rock                |       | Soft         | 775  | 790    |                   |             |         |
| SLATE                   |       | Soft         | 790  | 824    |                   |             |         |
| Red Rock                |       | "            | 824  | 840    |                   |             |         |
| SLATE                   |       | "            | 840  | 870    |                   |             |         |
| Sand                    |       | Hard         | 870  | 890    |                   |             |         |
| Red Rock                |       | Soft         | 890  | 975    |                   |             |         |
| SLATE                   |       | "            | 975  | 1055   |                   |             |         |
| Red Rock                |       | "            | 1055 | 1097   |                   |             |         |
| Blue Slate              |       | "            | 1097 | 1117   |                   |             |         |
| Red Rock                |       | "            | 1117 | 1127   |                   |             |         |
| Slate & Shells          |       | "            | 1127 | 1250   |                   |             |         |
| Sand                    |       | Hard         | 1250 | 1355   | 3BW. 1320         |             |         |
| SLATE                   |       | Soft         | 1355 | 1420   |                   |             |         |
| Sand                    |       | Hard         | 1420 | 1470   | 4B.W. 1450        |             |         |
| SLATE                   |       | Soft         | 1470 | 1542   |                   |             |         |
| Sand                    |       | Hard         | 1542 | 1560   |                   |             |         |
| SLATE                   |       | Soft         | 1560 | 1645   |                   |             |         |



(Over)

| Formation      | Color | Hard or Soft | Top 7 | Bottom | Oil, Gas or Water | Depth Found | Remarks |
|----------------|-------|--------------|-------|--------|-------------------|-------------|---------|
| Sand           |       | Broken       | 1645  | 1740   |                   |             |         |
| Slate          |       | Soft         | 1740  | 1750   |                   |             |         |
| Sand           |       | Hard         | 1750  | 1845   |                   |             |         |
| Big Lime       |       | Hard         | 1845  | 1905   |                   |             |         |
| Sand           |       | "            | 1905  | 1935   |                   |             |         |
| Lime           |       | "            | 1935  | 1945   |                   |             |         |
| lots of shells |       | "            | 1945  | 3585   |                   |             |         |
| Brown Shale    |       | Soft         | 3585  | 3640   |                   |             |         |
| slate & shells |       | Hard         | 3640  | 3842   |                   |             |         |
| Brown Shale    |       | Soft         | 3842  | 4100   |                   |             |         |
| White Slate    |       | "            | 4100  | 4475   |                   |             |         |
| Brown Shale    |       | "            | 4475  | 4726   |                   |             |         |
| rough Lime     |       | Hard         | 4726  | 4806   |                   |             |         |
| " "            |       | "            | 4806  | 4836   |                   |             |         |
| Oushan         |       | "            | 4836  | 4847   |                   |             |         |
|                |       |              |       | TD 475 |                   |             |         |

Date 6-11-59, 19

APPROVED Henneman Oil & Gas Co., Owner

By C. R. RENNER PARTNER  
(Title)