

Company CITIES SERVICE OIL CO.

Address Box 873 CHARLESTON, W. VA. 25323

Farm ALBERT FREY ET AL - CLARA REED ET AL
PART OF 240 AC

Tract _____ Acres 46 Lease No C-5749A

Well (Farm) No. 1 Serial No. GW-1989

Elevation (Spirit Level) 959.32 SE

Quadrangle RAVENSWOOD 5548 N130

County JACKSON District RIPLEY

Engineer R. B. Anderson

Engineer's Registration No. 2074

File No. _____ Drawing No. W-27-62

Date 12 JULY 62 Scale 1" = 660'

STATE OF WEST VIRGINIA
DEPARTMENT OF MINES
OIL AND GAS DIVISION
CHARLESTON

WELL LOCATION MAP
FILE NO. JAC-1043-P

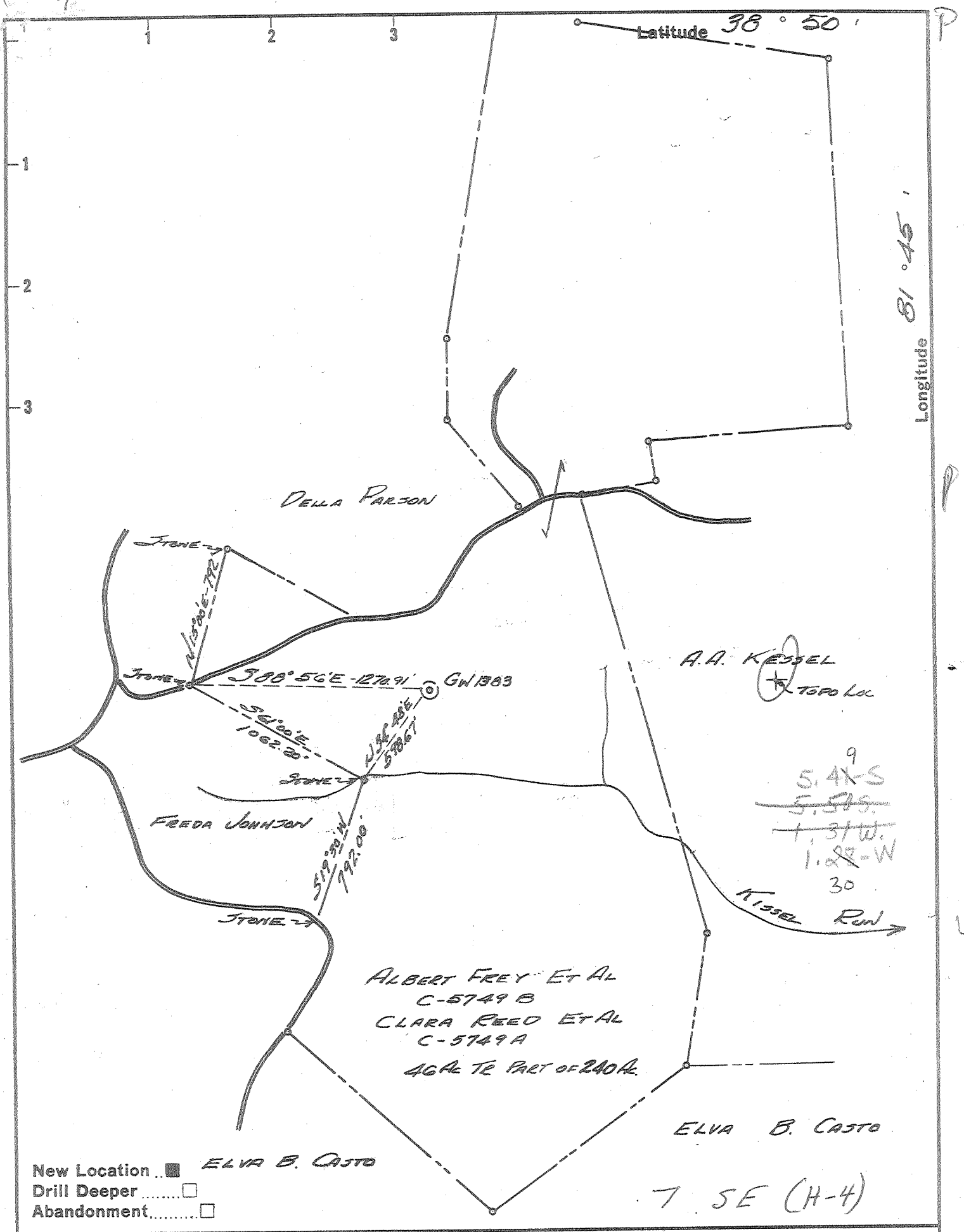
+ Denotes location of well on United States Topographic Maps, scale 1 to 62,500 latitude and longitude lines being represented by border lines as shown.

- Denotes one inch spaces on border line of original tracing.

47-035

DEEP WELL

JUL 9 1975



Company COLUMBIAN CARBON CO.
 Address Box 873 CHARLESTON, W. VA.
 Farm ALBERT FREY ET AL - CLARA REED ET AL
 Tract Part of 240^{ac} Acres 46 Lease No. C-5749A
 Well (Farm) No. 1 Serial No. GW-1383
 Elevation (Spirit Level) 959.32
 Quadrangle RAVENSWOOD 3548 N130
 County JACKSON District RIPLEY
 Engineer R. B. Anderson
 Engineer's Registration No. 2074
 File No. _____ Drawing No. W-27-62
 Date 12 JULY 62 Scale 1" = 660'

STATE OF WEST VIRGINIA
 DEPARTMENT OF MINES
 OIL AND GAS DIVISION
 CHARLESTON

WELL LOCATION MAP
FILE NO. JAC-1043

+ Denotes location of well on United States Topographic Maps, scale 1 to latitude and longitude lines being represented by border lines as shown.
 - Denotes one inch spaces on border line of original tracing.

Samples 0-5060'

DEEP WELL 6-6 311



STATE OF WEST VIRGINIA
DEPARTMENT OF MINES
OIL AND GAS DIVISION 12

Quadrangle Ravenswood SW

WELL RECORD

Permit No. Jac-1043

Oil or Gas Well gas
(KIND)

Company Columbian Fuel Corporation
Address P. O. Box 873, Charleston 23, W. Va.
Farm Albert Frey, et al Acres 46
Location (waters) Kissel Run
Well No. 1 - GW-1383 Elev. 953.32'
District Ripley County Jackson
The surface of tract is owned in fee by Albert Frey, et al
712 Knollwood Dr. Address Uniontown, Ohio
Mineral rights are owned by Albert Frey, et al
(for further add. contact C. F. Corp)
Address _____
Drilling commenced 8-22-62
Drilling completed 1-23-63
Date Shot not shot From _____ To _____
With _____
Open Flow 4 /10ths Water in 2 Inch
_____ /10ths Merc. in _____ Inch
Volume 84,000 Cu. Ft.
Rock Pressure _____ lbs. _____ hrs.
Oil _____ bbls., 1st 24 hrs.
WELL ACIDIZED not acidized
WELL FRACTURED see attached sheet

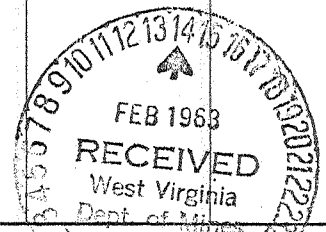
Casing and Tubing	Used in Drilling	Left in Well	Packers
Size			Kind of Packer
16" 65#	60'6"	60'6"	
13 3/8" 48#	819'3"	819'3"	Parmco Btm. Hole
10 3/4" 40.5#	1402'7"	pulled	Size of 5-1/2x7"
8 1/4" 24#	2066'11"	2066'11"	Depth set 4995'SLM
7" 23#	2634'11"	2634'11"	
5 3/16" 14#	5030'	5030'	
3" 23 3/8" 4#	5060'	5060'	Perf. top _____ Perf. bottom _____
Liners Used <u>w/ 2" cage</u>			Perf. top _____ Perf. bottom _____

CASING CEMENTED _____ SIZE _____ No. Ft. _____ Date _____
see attached sheet
COAL WAS ENCOUNTERED AT none FEET _____ INCHES _____
_____ FEET _____ INCHES _____ FEET _____ INCHES
_____ FEET _____ INCHES _____ FEET _____ INCHES

RESULT AFTER TREATMENT 16/10 M. 2" = 622 MCF (Oriskany)
ROCK PRESSURE AFTER TREATMENT 3 days 1820# B. H. 1780# Tubing
Fresh Water _____ Feet _____ Salt Water 1872-90' 1965-72' Feet 2177-78'

Formation	Color	Hard or Soft	Top	Bottom	Oil, Gas or Water	Depth	Remarks
Soil			0	14			
Shale			14	25			
Red Rock			25	40			
Sandy Shale			40	50			
Red Rock			50	80			
Blue Shale			80	95			
Red Rock			95	123			
Sand			123	134			
Red Rock			134	140			
Sand			140	165			
Red Rock			165	190			
Sand			190	210			
Red Rock			210	291			
Blue Shale			291	325			
Sand and Shale			325	370			
Red Rock			370	390			
Blue Sandy Shale			390	405			
Sand and Sandy Shale			405	455			
Blue Sandy Shale			455	500			
Hard Sand and Shale			500	547			
Blue Sandy Shale			547	580			
Red Rock			580	620			
Shale and Shells			620	648			
Red Rock			648	656			
Shale and Shells			656	737			
Gray Sand (hard)			737	750			
Blue Shale			750	815			

(over)



Formation	Color	Hard or Soft	Top /2	Bottom	Oil, Gas or Water	Depth Found	Remarks
Hard Shells			815	817			
Sand and Shells			817	839			
Red Rock			839	900			
Sand and Shale			900	935			
Red Rock and Shells			935	987			
Shale and Sand			987	1035			
Red Rock and Shells			1035	1115			
Sand			1115	1130			
Blue Shale			1130	1136			
Hard Shells			1136	1138			
Sand			1138	1150			
Sandy Shale			1150	1204			
Sand			1204	1220			
Blue Shale			1220	1243			
Mud			1243	1268			
Sandy Shale			1268	1285			
Hard Sand			1285	1324			
Sandy Shale			1324	1391	1391'SLM=1405'DLM		
Sand			1391	1397			
Blue Shale			1397	1426			
Sand			1426	1495			
Blue Sandy Shale			1495	1517			
Sandy Shale and Shells			1517	1805			
Sand			1805	1815			
Sand and Shale, broken			1815	1852			
Sand - <i>Silver Sand</i>			1852	1910	S. water	1872-90'	300' in hole
Sandy Shale			1910	1930	S. water	1965-72'	hole full
Sand - <i>Silver Sand</i>			1930	2020			
Lime			2020	2120	2045'DLM=2043'SLM		
Sandy Shale			2120	2167	Gas	2167-68' 70/10 W. 2" 353M	
Sand			2167	2270	Gas	2170-77' incr. to 421M-	
Sandy Shale			2270	2602			exh. to show
Coffee Shale			2602	2616	S. water	2177-78'	
Sand			2616	2624	2168'DLM=2170'SLM		
Shale			2624	2632	2617-1/2'DLM=2614'SLM		
Sandy Shale			2632	2695	Gas	2624'	11Mcf
Sandy Slate			2695	2813			
Blue Shale			2813	2955			
Sandy Slate			2955	3079			
Blue Slate			3079	3157			
Sandy Slate			3157	3220			
Blue Slate			3220	3572			
Shale and Shells			3572	3840			
Brown Shale - 441			3840	3925			
Sandy Slate			3925	3952			
Sandy Shale			3952	4118			
Brown Shale			4118	4395			
Blue Shale			4395	4468			
Green Shale			4468	4546			
Blue Shale			4546	4635			
Brown Shale			4635	4714			
Black Shale - MARCELLUS - HAMILTON			4714	4923'DLM=4917'SLM			
Lime			4917'SLM	5007			
Sand			5007	5015			
Lime			5015	5024	Gas	5015'	show
Oriskany Sand			5024	5045	Gas	5031-331/2'	84MCF
Lime - Heckerberg			5045	5060			
Total depth				5060'			

See casing and fracturing record on attached sheet

Date February 13, 1963

APPROVED Columbian Fuel Corporation, Owner

By W. S. Moore, Division Superintendent
(Title)

JWC-1043

CASING RECORD FOR GW-1583, Albert L. Frey #1

- 8-24-62 Ran 16" drive pipe at 60'DLM
- 9-3-62 Ran 13-3/8" 48# with shoe 817'DLM - set in 20' red mud.
- 9-12-62 Ran 10 3/4" casing with shoe 1391'SLM=1405'DLM. Set in 20' red mud. Filled later.
- 9-20-62 Ran 8-5/8" casing with shoe in 20' red mud at 2045'DLM=2043'SLM.
- 10-12-62 Ran 7" casing 2614'SLM - ran 50 sacks cement. Pumped plug to 2598'.
- 1-4-63 Ran 5-1/2" casing at 5,000'DLM=4,995'SLM with Load Packer on bottom-centralizers on 4 joints - R/L nipple 417' off bottom. Cemented with 30 sacks.

FRACTURING RECORD

Fractured the Berea Sand 11-2-62

Show gas before fracturing. Pumped in 200 gallons MCA-loaded tubing and annulus-took 4200# to displace MCA - broke down at 3400#. Pressure dropped gradually to 2700# at end of treatment. Used 18,000 gallons fluid, 20,000# of sand, 1/2 drum TMN. Sand started 1/2#/gallon - went to 2-1/4# maximum. Average injection rate 16 bbls/min. Flushed with 24 barrels - 1600# on tubing after shut down.

Killed show of gas and salt water with mud -squeezed off with 20 sacks cement and drilled thru Oriskany.

Fractured the Oriskany 1-28-63

Before fracturing gas gauged 84 MCF. Pumped in 1,200 gallons acid-filled hole-displaced acid. Broke down with 1 pump at 3,000# - 3 pumps at 3,500#. Injected 17,200# sand. Used 20,000# water and sand and 5,200 gallons flush. Average injection rate 22 bbls/min. Maximum pressure 3,700#. Started sand 1/2#/gallon - after 5,100 gallons went to 3/4# - after 5,500 gallons to 1#. Used 55 gallons TMN and 55 gallons T-08. 10 minutes after shut down 3,000#.

Final open flow 16/10 M. 2" = 622 MCF from Oriskany

