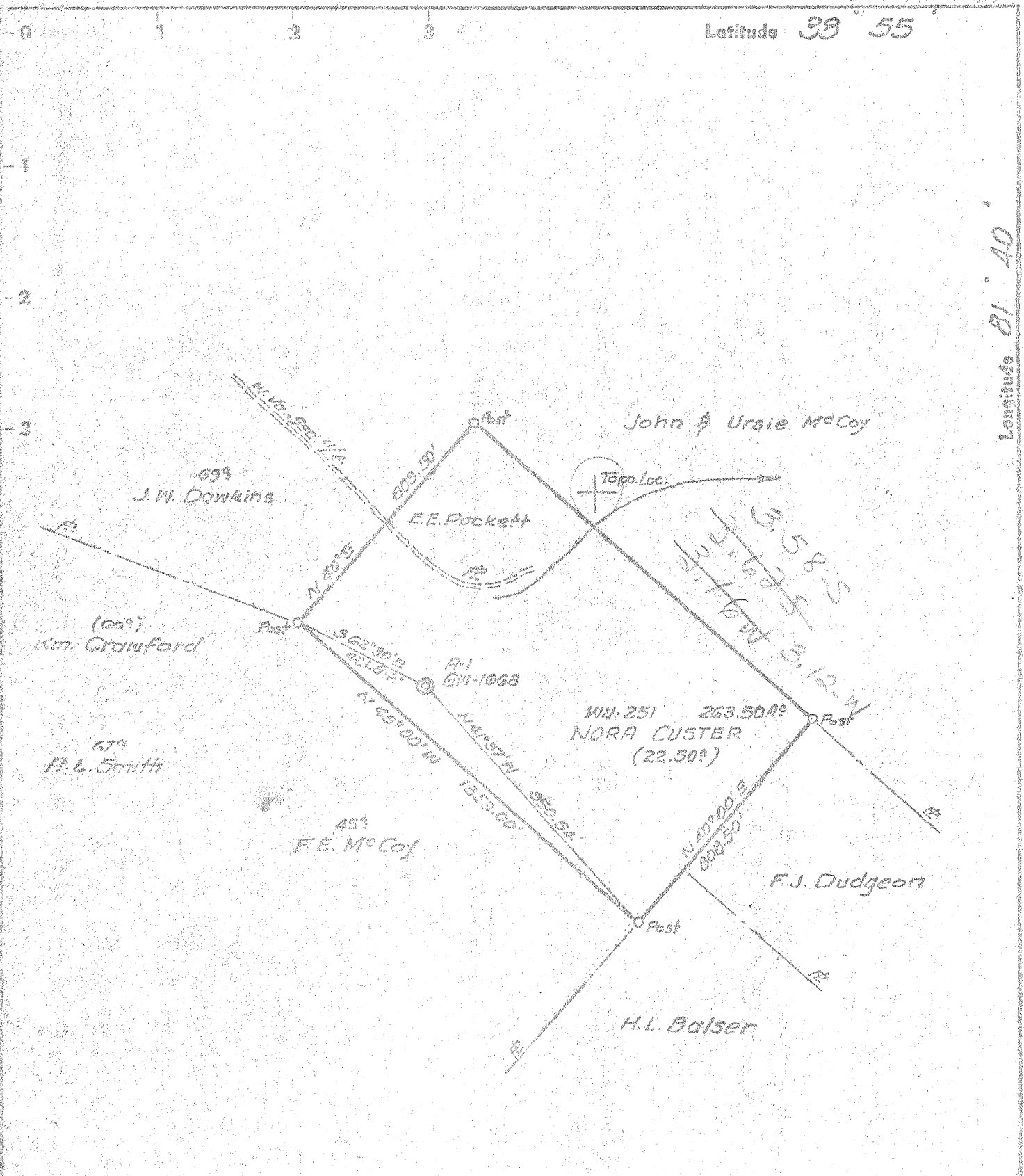


Latitude 33 55

Longitude 81 40



Bench Mark: USGS Data - Point of Intersection  
 W. Va. Sec. 11 & 12/5 - Elev. 718.00  
 Degree of Accuracy: (One Part in 200)

- New Location
- Drill Deeper
- Redrill
- Abandonment

"I, the undersigned, hereby certify that this map is correct to the best of my knowledge and belief and shows all the information required by paragraph 6 of the rules and regulations of the oil and gas section of the mining laws of West Virginia."

Company CITIES SERVICE OIL COMPANY  
 Address 604 823 CHARLESTON, W.VA.  
 Farm NORA CUSTER FLD. CONTROL  
 Tract Acres 22.50 Lease No. WV-251  
 Well (Farm) No. R-1 Serial No. GW-1068  
 Elevation (Spirit Level) 823.00 FT.  
 Quadrangle RIPLEY WC  
 County JACKSON District RIPLEY  
 Map No. W.V. 21100  
 Miner's Registration No. 2712  
 File No. \_\_\_\_\_ Drawing No. 19-5-1973  
 Date FEB. 23 1973 Scale 1"=640'

STATE OF WEST VIRGINIA  
 DEPARTMENT OF MINES  
 OIL AND GAS DIVISION  
 CHARLESTON

WELL LOCATION MAP  
 FILE NO. JAS-1198

+ Denotes location of well on United States Topographic Maps, scale 1 to 62,500, latitude and longitude lines being represented by border lines as shown.

- Denotes one inch spaces on border line of original tracing.

C. Davidson

6-6 Ripley 311

Deep Well

MAR 13 1970



APR 22 1970

STATE OF WEST VIRGINIA  
DEPARTMENT OF MINES  
OIL AND GAS WELLS DIVISION 4

Rotary   
Spudder   
Cable Tools   
Storage

Oil or Gas Well Gas  
(KIND)

Tract No. Ripley  
Permit No. JAC-1198

WELL RECORD

Company Cities Service Oil Company  
Address Box 873, Charleston, W. Va. 25323  
Farm Nora Custer, et al Acres 263.50  
Location (waters) \_\_\_\_\_  
Well No. "A" #1, G.W.-1668 Elev. 852.08' G  
District Ripley County Jackson  
The surface of tract is owned in fee by Nora Custer  
P. O. Box 296 Address New Waterford, Ohio  
Mineral rights are owned by Nora Custer, et al  
(for further add. contact C. S. O. Co)  
Address \_\_\_\_\_  
Drilling commenced 3-12-70  
Drilling completed 4-1-70  
Date Shot not shot From \_\_\_\_\_ To \_\_\_\_\_

Casing and Tubing	Used in Drilling depth set	Left in Well	Packers
Size			Kind of Packer
16			none
13 3/8" 48#	79'	all	Size of
9-5/8" 32#	2338'	all	Depth set
8 1/4			Perf. top
6 3/4			Perf. bottom
5 3/8" 17#	5620'	all	Perf. top
4 1/4			Perf. bottom
3	run		
2 3/8" 4.7#	5657'	5657'	
Liners Used	w/ 2" cage at 5667'		

With \_\_\_\_\_  
Open Flow /10ths Water in \_\_\_\_\_ Inch  
/10ths Merc. in \_\_\_\_\_ Inch  
Volume \_\_\_\_\_ Cu. Ft.  
Rock Pressure \_\_\_\_\_ lbs. \_\_\_\_\_ hrs.  
Oil \_\_\_\_\_ bbls., 1st 24 hrs.  
WELL ACIDIZED (DETAILS) not acidized

Attach copy of cementing record.  
CASING CEMENTED: \_\_\_\_\_ SIZE \_\_\_\_\_ No. Ft. \_\_\_\_\_ Date \_\_\_\_\_  
Amount of cement used (bags) see reverse side  
Name of Service Co. \_\_\_\_\_  
COAL WAS ENCOUNTERED AT \_\_\_\_\_ FEET \_\_\_\_\_ INCHES  
\_\_\_\_\_ FEET \_\_\_\_\_ INCHES  
\_\_\_\_\_ FEET \_\_\_\_\_ INCHES

WELL FRACTURED (DETAILS) see reverse side

RESULT AFTER TREATMENT (Initial open flow or bbls.) 74,000 MCFD at point calculated open flow  
ROCK PRESSURE AFTER TREATMENT 60 \_\_\_\_\_  
Fresh Water \_\_\_\_\_ Feet \_\_\_\_\_ Salt Water \_\_\_\_\_ Feet \_\_\_\_\_  
Producing Sand Newburg Sand 5659-78 Depth 5659-5678' per electric logs

Formation	Color	Hard or Soft	Top	Bottom	Oil, Gas or Water	Depth	Remarks
Top Soil			0	20			
Sandstone			20	40			
Red Rock and Shells			40	1770			
Sand - <u>Salt Sand</u>			1770	1830			
Lime - <u>Big lime</u>			1830	2015			
Sand - <u>Injun</u>			2015	2105			
Shale and Sand			2105	2500			
Shale			2500	4817			
Lime - <u>Helderberg</u> - 463			4817	4927			
Sand - <u>ORISKANY</u>			4927	4970			
Dolomite and Lime - <u>Helderberg</u>			4970	5661			
Newburg Sand			5661	5680			
<u>McKenzie</u>			5680				
Total depth		<u>McK</u>					
			<u>545</u>				
Electric logs showed:							
Newburg Sand			5659'	5678'			

5661  
852  
4809  
5661  
4927  
634

Formation	Color	Hard or Soft	Top	Bottom	Oil, Gas or Water	Depth Found	Remarks
<u>CASING RECORD</u>							
3-12-70							Set and cemented 13-3/8" 48# B Grade casing at 79' with 75 sacks of 3% cal. cl. Cement circulated to surface.
3-25-70							Set and cemented 9-5/8" 32.3# new casing with guide shoe at 2,338' with 503 sacks Pozmix and 100 sacks regular cement. Good circulation while cementing, but cement did not circulate to the surface.
3-29-70							Set and cemented 5-1/2" 17# J-55 new casing at 5,620' with 212 sacks of cement. Float at 5588'. Centralizers at 5588', 5493', 5397', 5301' and 5205' / Pumped 300 bbls. 6% gel ahead of cement. Gel did not circulate to the surface. Top of Onondaga 4816'. Oriskany Sand 4911' to 4960'. No show of gas in the Oriskany. Strong odor of sour gas while cementing casing.
4-2-70							Ran Birdwell Gamma Ray, Density, Caliper and Cement Bond Logs. Birdwell T.D. 5701'. Drillers' T.D. 5700'. Newburg Sand by logs 5659' to 5678' with 12' of 8 to 19% porosity.
4-8-70							<u>Fractured Newburg Sand</u> Pumped 500 gallons mud acid followed by 18,000# 20-40 Sand and 17,000# 10-20 sand in 20,000 gallons gelled water. Maximum treating pressure 4,300#. Average treating pressure 4027#. AIR 8.6 bbls/min. Used 625 bbls. total fluid during treatment.
4-20-70							1525# on tubing and 2115# on annulus. 4 point calculated open flow 74,000 MCFD. 60 hour SIP tubing 2105# and annulus 2101#.

Date April 21, 19 70

APPROVED Cities Service Oil Company, Owner

By L. D. Todd, Region Prod. Mgr.  
(Title)