

CERTIFICATE

"I, the undersigned, hereby certify that this map is correct to the best of my knowledge and belief and shows all the information required by paragraph 6 of the rules and regulations of the oil and gas section of the mining laws of West Virginia."

Minimum degree of accuracy is one part in 200

Signed William D. Smith, L.S. #116

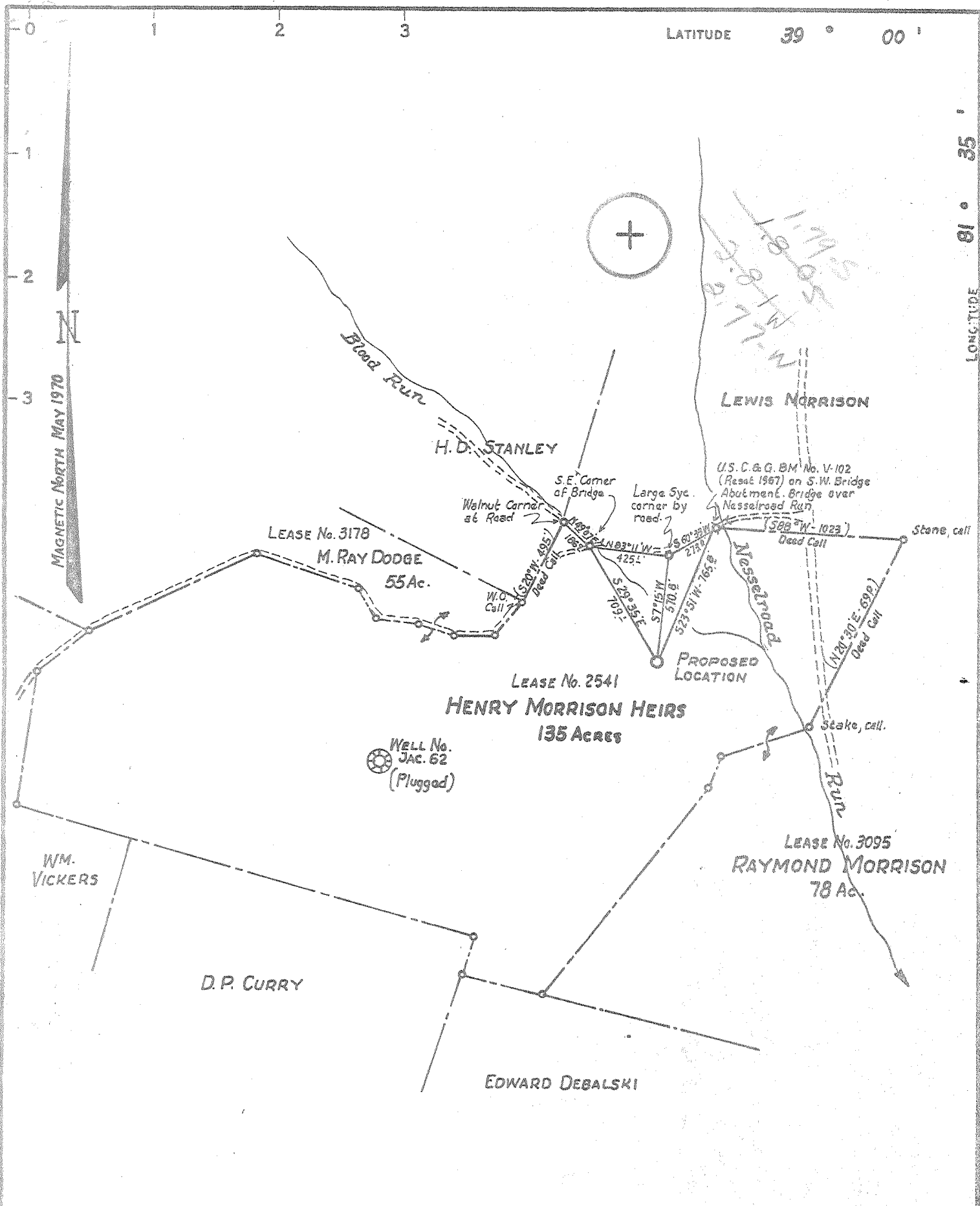
(N.B. No. 106 Pg. 11)

- NEW LOCATION
- RECONDITION
- DRILL DEEPER
- ABANDONMENT 6-23-70

| | | | |
|---------------------------|---------------------------------|------------|------------|
| COMPANY | COMMONWEALTH GAS CORPORATION | | |
| ADDRESS | P.O. Box 1433 CHARLESTON, W.VA. | | |
| FARM | HENRY MORRISON HEIRS | | |
| MAP | OV 27 | ACRES | 268 (UNIT) |
| LEASE NO. | 2541, 3178, 3095 | | |
| WELL (FARM) NO. | 1 | SERIAL NO. | 799 |
| ELEVATION (SPIRIT LEVEL) | 619.57 Ground | | |
| QUADRANGLE | RIPLEY N-W NC | | |
| COUNTY | JACKSON | DISTRICT | GRANT |
| POINT OF PROVEN ELEVATION | U.S.C. & G. DATA (See Above) | | |
| FILE NO | DRAWING NO. | | |
| DATE | JUNE 1, 1970 | SCALE | 1" = 660' |

STATE OF WEST VIRGINIA
 DEPARTMENT OF MINES
 OIL AND GAS DIVISION
 CHARLESTON
WELL LOCATION MAP
 FILE NO. Jac-1212-P

+ DENOTES LOCATION OF WELL ON UNITED STATES TOPOGRAPHIC MAPS. SCALE 1 TO 62,500. LATITUDE AND LONGITUDE LINES BEING REPRESENTED BY BORDER LINES AS SHOWN.
 - DENOTES ONE INCH SPACES ON BORDER LINE OF ORIGINAL TRACING.



CERTIFICATE

"I, the undersigned, hereby certify that this map is correct to the best of my knowledge and belief and shows all the information required by paragraph 6 of the rules and regulations of the oil and gas section of the mining laws of West Virginia."

Minimum degree of accuracy is one part in 200

Signed William A. Smully, L.S. # 116

(N.B. No. 106 Pt. II)

- NEW LOCATION
- RECONDITION
- DRILL DEEPER
- ABANDONMENT

| | | | |
|---------------------------|---------------------------------|------------|------------|
| COMPANY | COMMONWEALTH GAS CORPORATION | | |
| ADDRESS | P.O. Box 1433 CHARLESTON, W.VA. | | |
| FARM | HENRY MORRISON HEIRS | | |
| MAP | OV 27 | ACRES | 268 (UNIT) |
| LEASE NO. | 2541, 3176, 3095 | | |
| WELL (FARM) NO. | 1 | SERIAL NO. | 799 |
| ELEVATION (SPIRIT LEVEL) | 619.57 Ground | | |
| QUADRANGLE | RIPLEY N.W. NC | | |
| COUNTY | JACKSON | DISTRICT | GRANT |
| POINT OF PROVEN ELEVATION | U.S.C. & G. DATA (See Above) | | |
| FILE NO. | DRAWING NO. | | |
| DATE | JUNE 1, 1970 | | |
| | SCALE 1" = 660' | | |

| |
|---|
| STATE OF WEST VIRGINIA |
| DEPARTMENT OF MINES |
| OIL AND GAS DIVISION |
| CHARLESTON |
| WELL LOCATION MAP |
| FILE NO. <u>Jac-1212</u> |
| + DENOTES LOCATION OF WELL ON UNITED STATES TOPOGRAPHIC MAPS. SCALE 1 TO 62,500. LATITUDE AND LONGITUDE LINES BEING REPRESENTED BY BORDER LINES AS SHOWN. |
| - DENOTES ONE INCH SPACES ON BORDER LINE OF ORIGINAL TRACING. |

3-0 Elk-Poca (Sissonville) 192

Deepwell (Newburg)
JUN 15 1970
JUN 15 1970



STATE OF WEST VIRGINIA
DEPARTMENT OF MINES
OIL AND GAS DIVISION

Rotary
Spudder
Cable Tools
Storage
Oil or Gas Well **Dry Hole**
(KIND)

Quadrangle Ripley N.W.
Permit No. JAC 1212

WELL RECORD

| | | | | | | |
|---|---|-------------------|-------------------|------------------|--------------|----------------|
| Company | Commonwealth Gas Corporation | | Casing and Tubing | Used in Drilling | Left in Well | Packers |
| Address | P. O. Box 1433, Charleston, W.Va. 25325 | | Size | | | |
| Farm | Henry Morrison | Acres 268 Unit | | | | |
| Location (waters) | Neesselroad Run | | | | | |
| Well No. | 799 | Elev. 619.57(Gr.) | | | | Kind of Packer |
| District | Grant | County Jackson | 13 -3/8 | 156 | 156 | |
| The surface of tract is owned in fee by | Carrie Morrison & | | 9-5/8 | 1832 | 1142 | Size of |
| <u>Lewis Morrison, R.1 Bx.68</u> | <u>R.2 Bx.67, Ravenswood, W.Va.</u> | | 7" | 5375 | 485 | Depth set |
| Mineral rights are owned by | Same | | 5 3/16 | | | Perf. top |
| Address | Same | | 3 | | | Perf. bottom |
| Drilling commenced | June 4, 1970 | | 2 | | | Perf. top |
| Drilling completed | June 23, 1970 | | | | | Perf. bottom |
| Date Shot | -- | From -- To -- | Liners Used | | | |

Open Flow /10ths Water in _____ Inch
/10ths Merc. in _____ Inch
Volume _____ Cu. Ft.
Rock Pressure _____ lbs. _____ hrs.
Oil _____ bbls., 1st 24 hrs.
WELL ACIDIZED _____ FEET INCHES FEET INCHES
WELL FRACTURED _____ No

CASING CEMENTED _____ SIZE _____ No. Ft. _____ Date
100 bags behind the 13-3/8", 450 bags behind the
9-5/8", 50 bags behind the 7"
COAL WAS ENCOUNTERED AT _____ FEET INCHES
FEET INCHES FEET INCHES
FEET INCHES FEET INCHES

RESULT AFTER TREATMENT ---
ROCK PRESSURE AFTER TREATMENT ---
Fresh Water 100-121 Feet Salt Water 1100 & 1400 Feet 5593

| Formation | Color | Hard or Soft | Top | Bottom | Oil, Gas or Water | Depth | Remarks |
|---------------------------------------|-------|--------------|------|--------|-------------------|---------|-----------------------|
| Surface | | | 0 | 100 | | | |
| Sand - 1 1/2 ft. H ₂ O? | | | 100 | 121 | Water | 100-121 | |
| Red Rock | | | 121 | 125 | | | |
| Sand & Shale | | | 125 | 1100 | | | |
| Sand - <u>seer sand?</u> | | | 1100 | 1335 | Water | 1100 | |
| Shale | | | 1335 | 1435 | Water | 1400 | |
| Maxton Sand } <u>seer sand?</u> | | | 1435 | 1455 | | | |
| Sand | | | 1455 | 1535 | | | |
| Sand & Shale | | | 1535 | 1542 | | | |
| Big Lime } 340 | | | 1542 | 1625 | | | |
| Shale | | | 1625 | 1640 | | | |
| Sand - <u>Iron</u> | | | 1640 | 1720 | | | |
| Shale | | | 1720 | 1780 | | | |
| Shale | | | 1780 | 1855 | | | |
| Sand & Shale | | | 1855 | 1900 | | | |
| Shale | | | 1900 | 2140 | | | |
| Berea Sand | | | 2140 | 2170 | | | |
| Shale | | | 2170 | 4545 | | | |
| Corniferous Lime - 463 | | | 4545 | 4650 | | | |
| Oriskany Sand | | | 4650 | 4665 | | | |
| Lime - <u>Nelderberg & Salina</u> | | | 4665 | 5423 | | | |
| Newburg Sand | | | 5423 | 5430 | | | |
| Lime McKenzie | | | 5430 | 5624 | Water | 5593 | |
| | | Total Depth | | 5624 | | | Plugged and Abandoned |

RECEIVED
JUL 8 1970
OIL & GAS DIVISION
DEPT. OF MINES

545