

ACCURACY: 1P / 200P

Source of Elevation HEMLOCK (825')

- New Location
- Drill Deeper
- Abandonment
- Fracture
- Redrill

I, the undersigned, hereby certify that this map is correct to the best of my knowledge and belief and shows all the information required by paragraph 6 of the rules and regulations of the oil and gas section of the mining laws of West Virginia.

5-17-74

COLONIAL GAS COMPANY, INC.

Company COLONIAL GAS COMPANY

Address CHARLESTON, W. VA.

Farm C.N. BOURGEOIS

Tract Acres 36 Lease No.

Well (Farm) No. 4 Serial No.

Elevation (Spirit Level) 860'

Quadrangle RIPLEY

County JACKSON District RAVENSWOOD

Engineer CHET WATERMAN

Engineer's Registration No. 3788

File No. 70005-214 Drawing No.

Date 5/9/70 Scale 1" = 300'

STATE OF WEST VIRGINIA
DEPARTMENT OF MINES
OIL AND GAS DIVISION
CHARLESTON

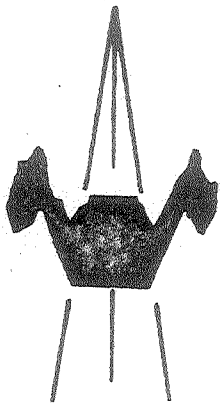
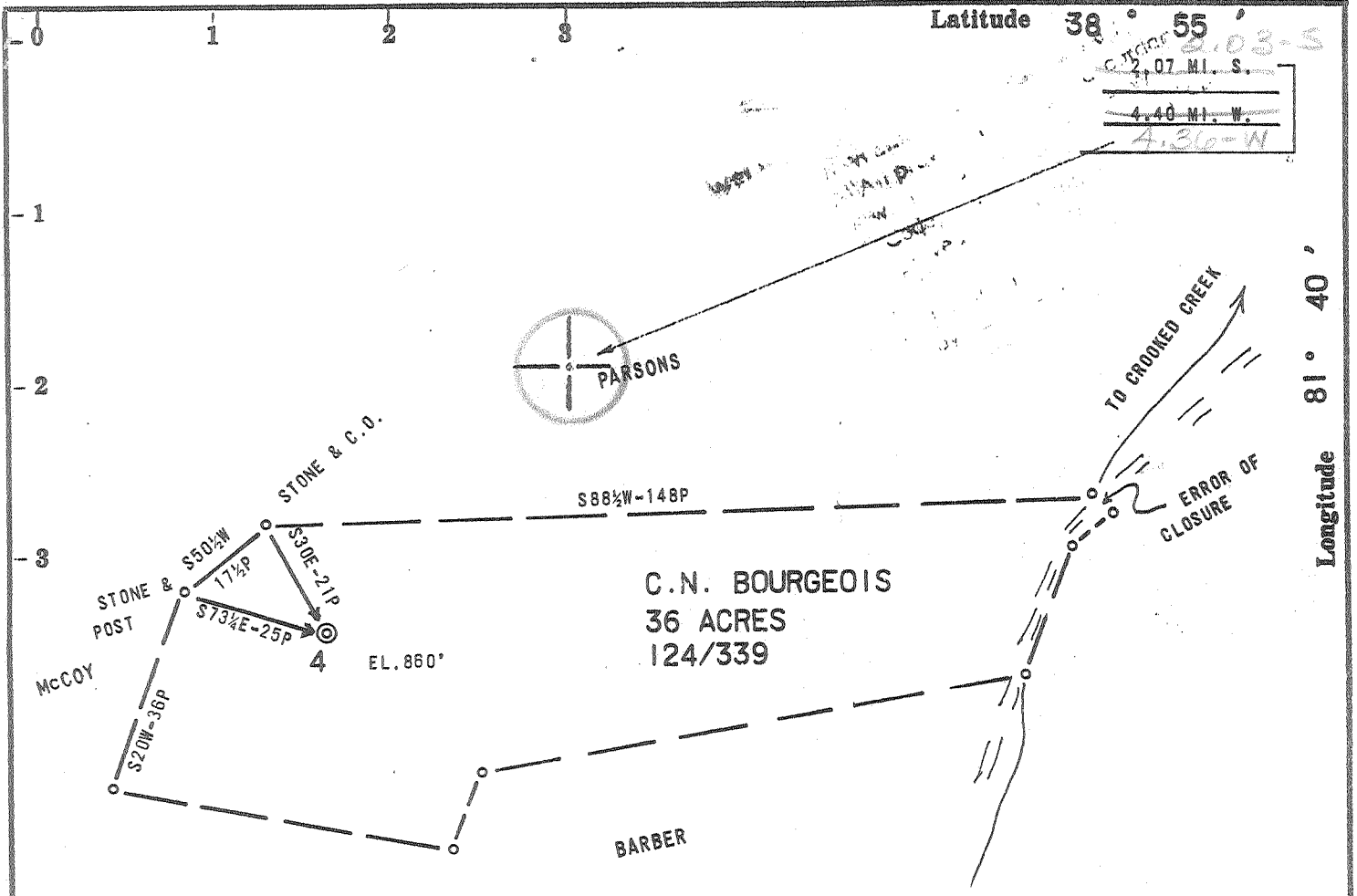
WELL LOCATION MAP

FILE NO. JAC-1222-P

+ Denotes location of well on United States Topographic Maps, scale 1 to 62,500, latitude and longitude lines being represented by border lines as shown.

— Denotes one inch spaces on border line of original tracing.

Deep Well JUN 21 1974



ACCURACY: 1P / 200P

Source of Elevation HEMLOCK (625')

- New Location
- Drill Deeper
- Abandonment
- Fracture
- Redrill

I, the undersigned, hereby certify that this map is correct to the best of my knowledge and belief and shows all the information required by paragraph 6 of the rules and regulations of the oil and gas section of the mining laws of West Virginia.

Chet Waterman

Company	COLONIAL GAS COMPANY		
Address	CHARLESTON, W.VA.		
Farm	C.N. BOURGEOIS		
Tract	Acres	36	Lease No.
Well (Farm) No.	4	Serial No.	
Elevation (Spirit Level)	860'		
Quadrangle	RIPLEY WC		
County	JACKSON	District	RAVENSWOOD
Engineer	CHET WATERMAN		
Engineer's Registration No.	3788		
File No.	70003-214	Drawing No.	
Date	6/9/70	Scale	1" = 30P

STATE OF WEST VIRGINIA
 DEPARTMENT OF MINES
 OIL AND GAS DIVISION
 CHARLESTON

WELL LOCATION MAP
 FILE NO. JAC-1222

+ Denotes location of well on United States Topographic Maps, scale 1 to 62,500, latitude and longitude lines being represented by border lines as shown.

— Denotes one inch spaces on border line of original tracing.

D 311-Ripley 6-6

Deep (Newburg) JUL 27 1970

39-00
4-21



STATE OF WEST VIRGINIA
DEPARTMENT OF MINES
OIL AND GAS WELLS DIVISION 2

Rotary
Spudder
Cable Tools
Storage

Quadrangle Ripley
Permit No. Jac-1222

WELL RECORD

Oil or Gas Well Gas (KIND)

Company Colonial Gas Company
Address 1596 Kanawha Blvd, Charleston, W. Va.
Farm C. N. Bourgeois Acres 36
Location (waters) Crooked Fork
Well No. Four (4) Elev. 872 KB
District Ravenswood County Jackson
The surface of tract is owned in fee by C. N. Bourgeois
Address Ripley, W. Va.
Mineral rights are owned by C. N. Bourgeois
Address Ripley, W. Va.

Casing and Tubing	Used in Drilling	Left in Well	Packers
Size			Kind of Packer
16			
13	200	200	Size of
10			Depth set
8 1/2	2275	2275	
6 1/2			Perf. top
5 1/2	5552	5552	Perf. bottom
4 1/2			Perf. top
3			Perf. bottom
2			Perf. top
Liners Used			Perf. bottom

Drilling commenced 7/21/70
Drilling completed 8/21/70
Date Shot From To
With
Open Flow /10ths Water in Inch
/10ths Merc. in Inch
Volume 20,000,000 Cu. Ft.
Rock Pressure 2050 lbs. 1 hrs.
Oil bbls., 1st 24 hrs.
WELL ACIDIZED (DETAILS)

Attach copy of cementing record.
CASING CEMENTED Yes SIZE No. Ft. Date
Amount of cement used (bags) See other side
Name of Service Co. Halliburton
COAL WAS ENCOUNTERED AT None FEET INCHES
FEET INCHES FEET INCHES
FEET INCHES FEET INCHES

WELL FRACTURED (DETAILS) Yes, 500 gal MCA acid 27,500 lb 20/40 sand
RESULT AFTER TREATMENT (Initial open Flow or bbls.) 90,000,000 cu ft. 90,000 MCF
ROCK PRESSURE AFTER TREATMENT 2050 HOURS 1
Fresh Water Feet Salt Water Feet
Producing Sand Newburg Depth 5578 - 5588

Formation	Color	Hard or Soft	Top	Bottom	Oil, Gas or Water	Depth	Remarks
Red Rock			0	20			
Sand			20	60			
Red Rock			60	140			
Shale			140	160			
Sand			160	180			
Shale			180	210			
Red Rock			210	250			
Shale			250	360			
Red Rock			360	400			
Shale			400	455			
Red Rock			455	520			
Shale			520	800			
Sand			800	860			
Red Rock			860	910			
Shale			910	1060			

RECEIVED
SEP 30 1970

Formation	Color	Hard or Soft	Top 2	Bottom	Oil, Gas or Water	Depth Found	Remarks
Rock			1060	1100			
ale			1100	1290			
nd			1290	1550			
ale			1550	1870			
nd			1870	1915			
g Lime			1915	2080			
g Injun			2080	2190			
ale			2190	2484			
rea			2484	2490			
ale			2490	4758			
omiferous Lm.	463		4758	4853			
riskany			4853	4860			
imestone & Dolomite		Heinberg Salina	4860	5578			
ewburg Sandstone			5578	5588			
imestone & Dolomite		Melenje	5588	5606			
TOTAL DEPTH	5606	MCKZ		545			

CEMENTING RECORD

12/22/70 13" Casing @ 200 ft. w/175sx.
 1/10/70 8-5/8" Casing @ 2275 ft. w/160sx.
 3/15/70 5-1/2" Casing @ 5552 ft. w/150 sx.

Date Aug 25th, 1970
 APPROVED Colonial Gas Company Owner
 By CA Kaufman (Title)
 (Title)