

New Location   
 Drill Deeper   
 Abandonment

Minimum Error of Closure 1 in 200  
 Source of Elevation Elev. 914' Road Intersection NW of Well Loc.

"I, the undersigned, hereby certify that this map is correct to the best of my knowledge and belief and shows all the information required by paragraph 6 of the rules and regulations of the oil and gas section of the mining laws of West Virginia."

Issued 5-17-74

~~AT&S Gas & Oil, Inc.~~  
 Company COASTAL GAS CO.  
 Address PO. Box 162 CHARLESTON, W. VA.  
 Farm GORDON H. TEMPLIN  
 Tract 1 Acres 21 Lease No. \_\_\_\_\_  
 Well (Farm) No. 1 Serial No. \_\_\_\_\_  
 Elevation (Spirit Level) 762.0 EC  
 Quadrangle RAVENSWOOD 6-36-74  
 County JACKSON District UNION  
 Engineer N. L. Defton  
 Engineer's Registration No. 1832  
 File No. \_\_\_\_\_ Drawing No. \_\_\_\_\_  
 Date 4-2-70 Scale 1" = 300'

STATE OF WEST VIRGINIA  
 DEPARTMENT OF MINES  
 OIL AND GAS DIVISION  
 CHARLESTON

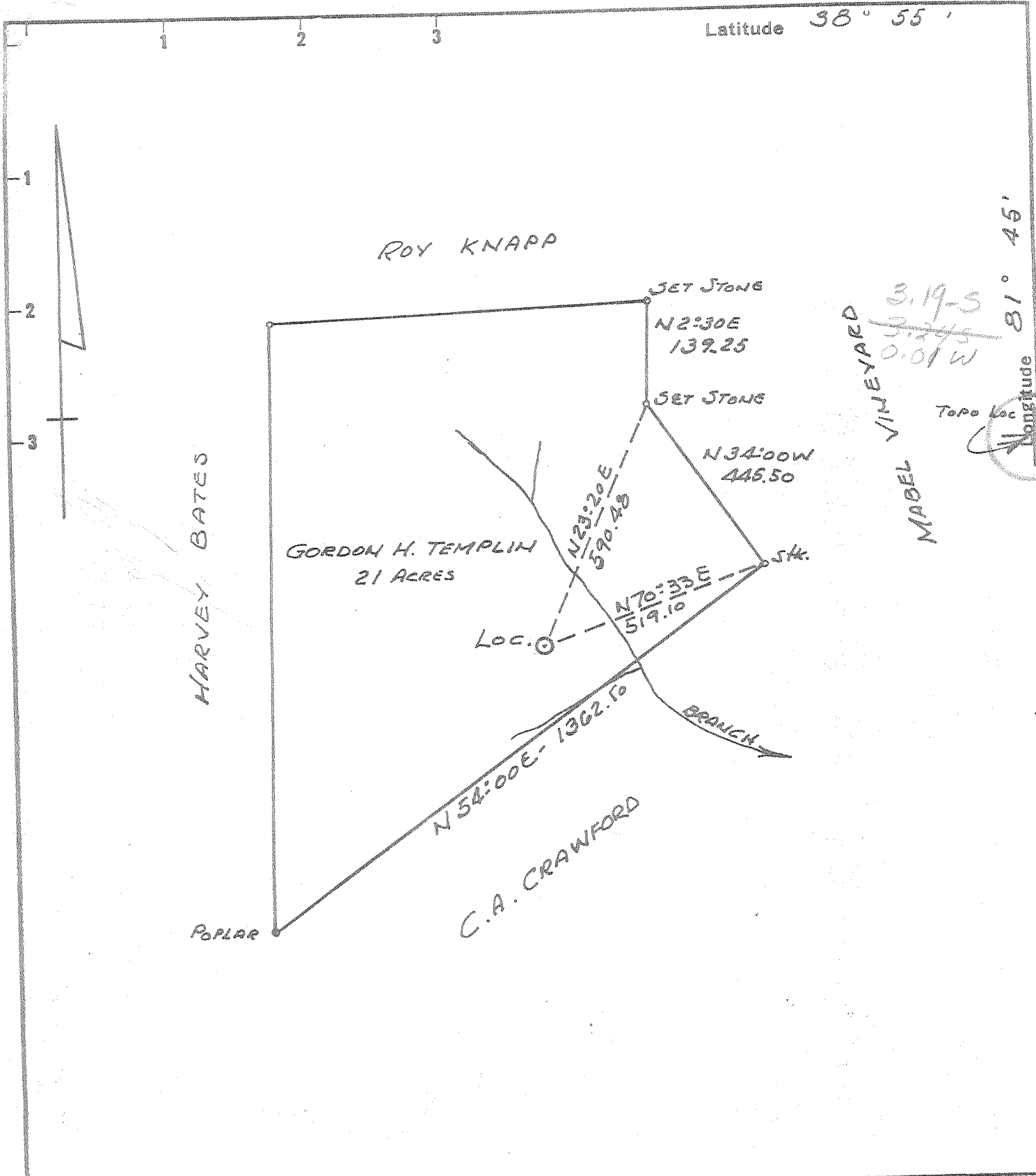
WELL LOCATION MAP  
 FILE NO. JAC-1228-P

+ Denotes location of well on United States Topographic Maps, scale 1 to 62,500 latitude and longitude lines being represented by border lines as shown.

- Denotes one inch spaces on border line of original tracing.

47-035  
Deep well JUN 21 1974

Latitude 38° 55'



New Location   
 Drill Deeper   
 Abandonment

Minimum Error of Closure 1 in 200  
 Source of Elevation Elev. 914' Road Intersection N.W. of Well loc.  
 "I, the undersigned, hereby certify that this map is correct to the best of my knowledge and belief and shows all the information required by paragraph 6 of the rules and regulations of the oil and gas section of the mining laws of West Virginia."

Company COLONIAL GAS CO.  
 Address CHARLESTON, W. VA.  
 Farm GORDON H. TEMPLIN  
 Tract 1 Acres 21 Lease No. \_\_\_\_\_  
 Well (Farm) No. 1 Serial No. \_\_\_\_\_  
 Elevation (Spirit Level) 762.0  
 Quadrangle RAVENSWOOD EC  
 County JACKSON District UNION  
 Engineer N. L. Depton  
 Engineer's Registration No. 1832  
 File No. \_\_\_\_\_ Drawing No. \_\_\_\_\_  
 Date 4-2-70 Scale 1" = 300'

STATE OF WEST VIRGINIA  
 DEPARTMENT OF MINES  
 OIL AND GAS DIVISION  
 CHARLESTON  
**WELL LOCATION MAP**  
 FILE NO. JAC-1228

+ Denotes location of well on United States Topographic Maps, scale 1 to 62,500 latitude and longitude lines being represented by border lines as shown.  
 - Denotes one inch spaces on border line of original tracing.

D6-6 Ripley 311

Deep (Newhucca) AUG 31 1970



STATE OF WEST VIRGINIA  
DEPARTMENT OF MINES  
OIL AND GAS WELLS DIVISION 4

Rotary   
Spudder   
Cable Tools   
Storage   
Oil or Gas Well  Gas  
(KIND)

Quadrangle Ravenswood  
Permit No. Jac-1228

WELL RECORD

Company Colonial Gas Company  
Address 1596 Kanawha Blvd., Charleston, W. Va.  
Farm Gordon H. Templin Acres 21  
Location (waters)  
Well No. (One) 1 Elev. 762 Gd  
District Union County Jackson  
The surface of tract is owned in fee by  
Mineral rights are owned by  
Drilling commenced 8/18/70  
Drilling completed 9/15/70  
Date Shot From To  
With  
Open Flow /10ths Water in Inch  
/10ths Merc. in Inch  
Volume Cu. Ft.  
Rock Pressure lbs. hrs.  
Oil bbls., 1st 24 hrs.  
WELL ACIDIZED (DETAILS)

Casing and Tubing	Used in Drilling	Left in Well	Packers
Size			Kind of Packer
16			
13	200	200	Size of
10			Depth set
8 5/8	2220	2220	
6 5/8			
5 3/4	5445	5445	Perf. top
4 1/2			Perf. bottom
3			Perf. top
2			Perf. bottom
Liners Used			

Attach copy of cementing record. See other side  
CASING CEMENTED Yes SIZE No. Ft. Date  
Amount of cement used (bags)  
Name of Service Co. Halliburton  
COAL WAS ENCOUNTERED AT None FEET INCHES  
FEET INCHES FEET INCHES  
FEET INCHES FEET INCHES

WELL FRACTURED (DETAILS) Yes; 500 gal 15% MCA acid, 27500 lb. 20/40 sand  
Est. open flow 50,000,000 cu. ft.  
RESULT AFTER TREATMENT (Initial open Flow or bbls.)  
ROCK PRESSURE AFTER TREATMENT 1850 HOURS 24  
Fresh Water Feet Salt Water Feet  
Producing Sand Newburg Depth 5478' to 5488'

Formation	Color	Hard or Soft	Top	Bottom	Oil, Gas or Water	Depth	Remarks
Surface			0	10			
Sandstone			10	30			
Shale & Sandstone			30	1600			
Sandstone	Salt Sand		1600	1830			
Limestone	Big lime		1830	2070			
Sandstone	Injun		2070	2200			
Shale			2200	2376			
Berea			2376	2386			
Shale			2386	4658			
Corniferous Lime	463		4658	4748			
Oriskany			4748	4756			
Limestone & Dolomite		HILBERSBERG & SALINA	4756	5478			
Newburg			5478	5488			
Limestone & Dolomite		McKenzie	5488	5510			
				5510			
							Total Depth

RECEIVED  
SEP 30 1970

(over) 545

