

Minimum Error of Closure 1" IN 200'

Source of Elevation CONTOUR IN RUN 606.00

- Fracture.....
- New Location.....
- Drill Deeper.....
- Abandonment.....

I, the undersigned, hereby certify that this map is correct to the best of my knowledge and belief and shows all the information required by paragraph 6 of the rules and regulations of the oil and gas section of the mining laws of West Virginia.

Signed: L. J. Dye  
Squares: N S E W

Company P. C. Company, Inc.  
~~Edison J. Parsons~~  
 Address RIPLEY, W. VA.  
 Farm ROBERT SAYRE  
 Tract \_\_\_\_\_ Acres 41 Lease No. \_\_\_\_\_  
 Well (Farm) No. M.A. Sayre 2 Serial No. \_\_\_\_\_  
 Elevation (Spirit Level) \_\_\_\_\_ 625.00  
 Quadrangle RAVENSWOOD C  
 County JACKSON District UNION  
 Engineer L. J. Dye  
 Engineer's Registration No. 004  
 File No. \_\_\_\_\_ Drawing No. \_\_\_\_\_  
 Date 9-1-70 Scale 1" = 40 FEET

STATE OF WEST VIRGINIA  
 DEPARTMENT OF MINES  
 OIL AND GAS DIVISION  
 CHARLESTON

**WELL LOCATION MAP**

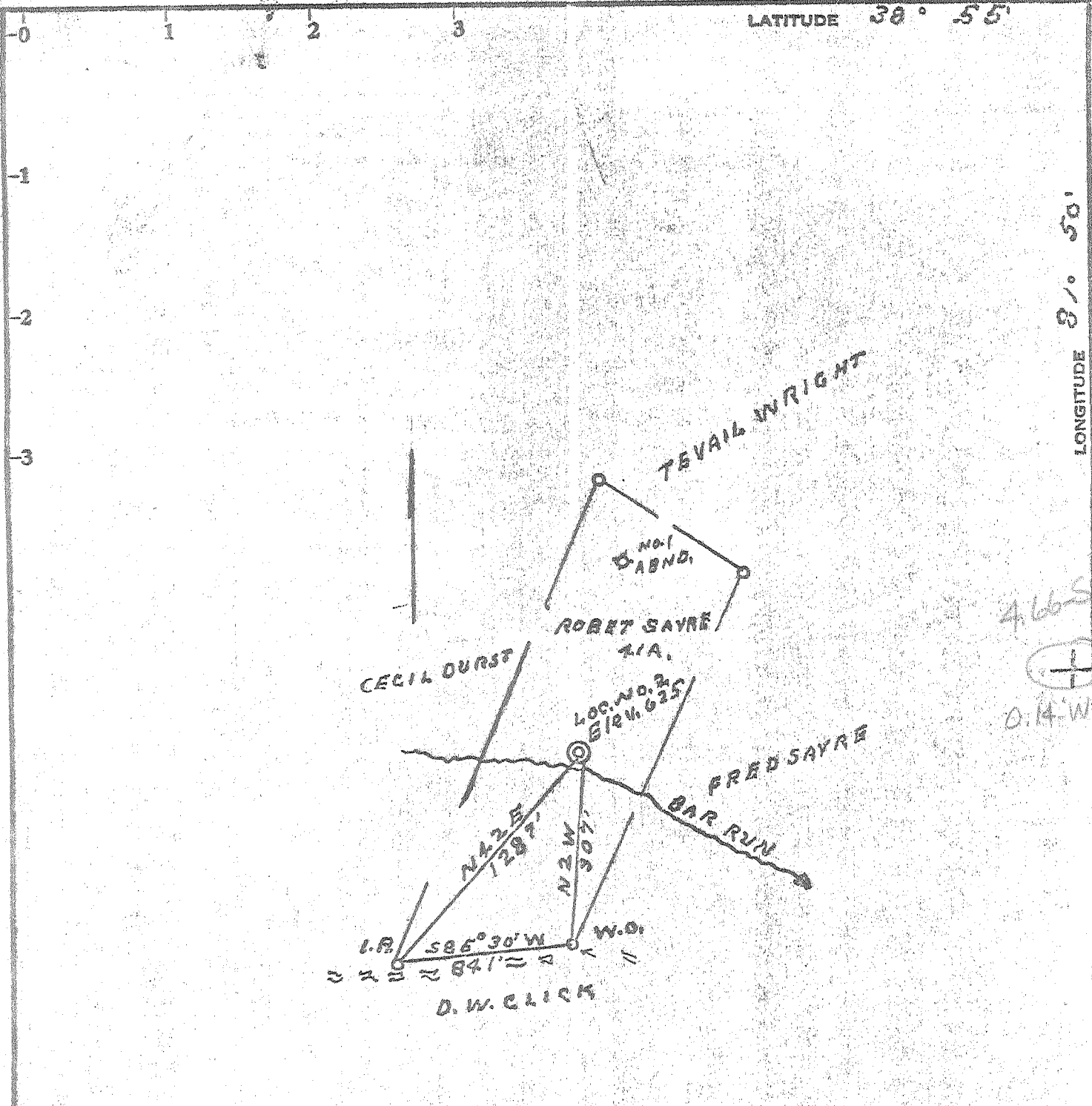
FILE NO. Jac-1233

+ Denotes location of well on United States Topographic Maps, scale 1 to 62,500, latitude and longitude lines being represented by border lines as shown.

— Denotes one inch spaces on border line of original tracing.

D-5-0 Ripley (342)

Deep well  
 SEP 21 1970



Minimum Error of Closure 1' IN 200'

Source of Elevation CONTOUR IN RUN 606.00

- Fracture.....
- New Location.....
- Drill Deeper.....
- Abandonment.....  loc'd 5-17-71

I, the undersigned, hereby certify that this map is correct to the best of my knowledge and belief and shows all the information required by paragraph 6 of the rules and regulations of the oil and gas section of the mining laws of West Virginia.

Signed: L. J. Dye  
Squares: N / S E W

Company P. B. C. COMPANY, INC.  
 Address RIPLEY, W. VA.  
 Farm ROBERT SAYRE  
 Tract \_\_\_\_\_ Acres 41 Lease No. \_\_\_\_\_  
 Well (Farm) No. MA-2 Serial No. \_\_\_\_\_  
 Elevation (Spirit Level) 625.00  
 Quadrangle RAVENSWOOD  
 County JACKSON District UNION  
 Engineer L. J. Dye  
 Engineer's Registration No. 1104  
 File No. \_\_\_\_\_ Drawing No. \_\_\_\_\_  
 Date 9-1-70 Scale 1" = 40 FEET

STATE OF WEST VIRGINIA  
 DEPARTMENT OF MINES  
 OIL AND GAS DIVISION  
 CHARLESTON

**WELL LOCATION MAP**

FILE NO. JAC-1233-1

+ Denotes location of well on United States Topographic Maps, scale 1 to 62,500, latitude and longitude lines being represented by border lines as shown.

- Denotes one inch spaces on border line of original tracing.

TRASCO

5-0 N. Ripley (342)

Deep Well

MAY 24 1971



RECEIVED

MAY 17 1971

STATE OF WEST VIRGINIA  
 DEPARTMENT OF MINES  
 OIL AND GAS DIVISION 2

OIL & GAS DIVISION  
 DEPT. OF MINES

- Rotary
- Spudder
- Cable Tools
- Storage

Quadrangle Ravenswood

Permit No. Jac - 1233p

WELL RECORD

Oil or Gas Well Dry  
 (KIND)

Company P. & C. Company, Inc.  
 Address Ripley, W. Va.  
 Farm Robert Sayre Acres 41  
 Location (waters) Bar Run  
 Well No. M. A. Sayre - 2 Elev. GL. 625.00  
 District Union County Jackson  
 The surface of tract is owned in fee by \_\_\_\_\_  
 Address \_\_\_\_\_  
 Mineral rights are owned by \_\_\_\_\_  
 Address \_\_\_\_\_  
 Drilling commenced 1-10-70  
 Drilling completed Logged 3-15-71  
 Date Shot \_\_\_\_\_ From \_\_\_\_\_ To \_\_\_\_\_  
 With \_\_\_\_\_

Casing and Tubing	Used in Drilling	Left in Well	Packers
Size			
16	14'	14'	Kind of Packer
13	206'	206'	
10	819'		Size of
8 1/4	1875'		
6 3/4	2952'		Depth set
5 3/16			
4 1/2	4908'	+250	
3			Perf. top
2			Perf. bottom
Liners Used			Perf. top
			Perf. bottom

Open Flow /10ths Water in \_\_\_\_\_ Inch  
/10ths Merc. in \_\_\_\_\_ Inch  
 Volume \_\_\_\_\_ Cu. Ft.  
 Rock Pressure \_\_\_\_\_ lbs. \_\_\_\_\_ hrs.  
 Oil \_\_\_\_\_ bbls., 1st 24 hrs.

Attach copy of cementing record.  
 CASING CEMENTED \_\_\_\_\_ SIZE \_\_\_\_\_ No. Ft. \_\_\_\_\_ Date \_\_\_\_\_  
 Amount of cement used (bags) \_\_\_\_\_  
 Name of Service Co. \_\_\_\_\_  
 COAL WAS ENCOUNTERED AT 1185 FEET 60 INCHES  
 \_\_\_\_\_ FEET \_\_\_\_\_ INCHES \_\_\_\_\_ FEET \_\_\_\_\_ INCHES  
 \_\_\_\_\_ FEET \_\_\_\_\_ INCHES \_\_\_\_\_ FEET \_\_\_\_\_ INCHES

WELL ACIDIZED (DETAILS) \_\_\_\_\_  
 WELL FRACTURED (DETAILS) Yes - Conventional

RESULT AFTER TREATMENT (Initial open Flow or bbls.) \_\_\_\_\_  
 ROCK PRESSURE AFTER TREATMENT \_\_\_\_\_ HOURS \_\_\_\_\_  
 Fresh Water 90-120 & 130-150' Feet \_\_\_\_\_ Salt Water \_\_\_\_\_ Feet \_\_\_\_\_  
 Producing Sand \_\_\_\_\_ Depth \_\_\_\_\_

Formation	Color	Hard or Soft	Top	Bottom	Oil, Gas or Water	Depth	Remarks
Soil			0	8			
Blue Rock			8	20			
Red Rock			20	25			
Blue Rock			25	60			
Red Rock			60	80			
Blue Rock			80	90			
Sand			90	120	F. Water		
Blue Rock			120	130			
Sand			130	150			
Red Rock			150	193			
Blue Rock			193	285			
Red Rock			285	300			
Slate			300	380			
Red Rock			380	385			
Blue Rock			385	460			
Red Rock			460	520			
Blue Shale			520	560			
Red Rock			560	580			
Slate			580	835		(over)	

Formation	Color	Hard or Soft	Top 2	Bottom	Oil, Gas or Water	Depth Found	Remarks
Pink Rock			835	840			
Slate			840	910			
Sand			910	1000			
White Sand	Big Dunkard?		1000	1185			
Coal			1185	1190			
Broken Sand			1190	1240			
Slate			1240	1290			
Sand			1290	1333			
Black Slate			1333	1410			
Sand			1410	1430			
Lime Shell			1430	1490			
Big Lime			1490	1620			
Slate & Shell	340		1620	1675			
Injun			1675	1800			
Lime			1800	1912			
Slate			1912	2090			
Black Shale	Coffee Sh.		2090	2102			
Berea			2102	2120			
Slate & Shells			2120	3250	Gas 2/10 w 1"		
Brown Shale	441?		3250	3340	Gas		
White Slate			3340	3510			
Brown Shale	441		3510	3670	Gas 2/10 w 1"		
White Slate			3670	4004			
Brown Shale			4004	4184			
Corniferous	463		4184	4288	Gas 4270		very slight tem.
Oriskany Horizon			4288	4310			
Lime	HELBERSBERG		4310	4442	Show water 4804'		Show gas 4650'
Dolomite	SALINA		4442	4938	Show oil 4846'		Gas 4775 tem. peak
Newburg			4938	4944	Show gas, oil		
Dolomite	MCKZ		4944				
			TOTAL DEPTH	4959'			
				(545)			
2-11-71	4 1/2"		4907'	30 bags	Well Service		
	13"		206'	32 bags	Operator		

Date May 17, 1971

APPROVED P & C Company, Inc., Owner

By \_\_\_\_\_ (Title)