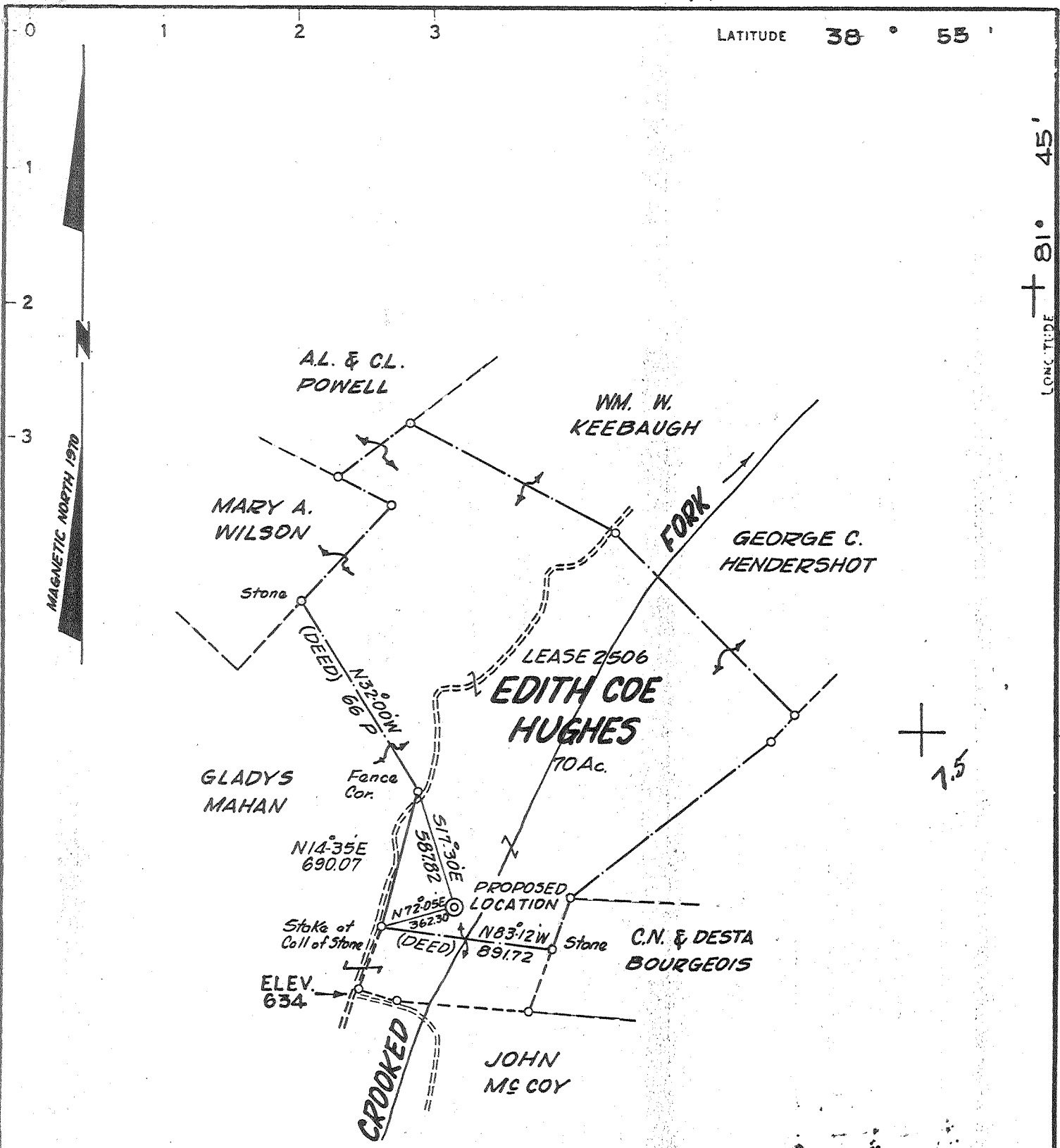


1900

10/14/70 CEN



LONGITUDE + 81° 45'
 10700

PARTIAL PLUG 3/6/78

- NEW LOCATION
- RECONDITION
- DRILL DEEPER
- ABANDONMENT

CERTIFICATE

"I, the undersigned, hereby certify that this map is correct to the best of my knowledge and belief and shows all the information required by paragraph 6 of the rules and regulations of the oil and gas section of the mining laws of West Virginia."

Minimum degree of accuracy is one part in 200

NB 107 PG. 48

Signed William D. Gandy L.L.S.#116

COMPANY	DEVON CORP.
ADDRESS	P.O. BOX 1433 CHARLESTON, W.VA.
FARM	EDITH COE HUGHES
MAP	OV-28 ACRES 250 UNIT LEASE NO. 2506
WELL (FARM) NO.	1 SERIAL NO. 811
ELEVATION (SPIRIT LEVEL)	609.88
QUADRANGLE	RAVENSWOOD/Ravenwood 7.5
COUNTY	JACKSON DISTRICT RAVENSWOOD
POINT OF PROVEN ELEVATION	USCG DATA-ROAD INTERSECTION SHOWN ABOVE ELEV. 634
FILE NO.	OCT. 7, 1970
DRAWING NO.	SCALE 1" = 660'

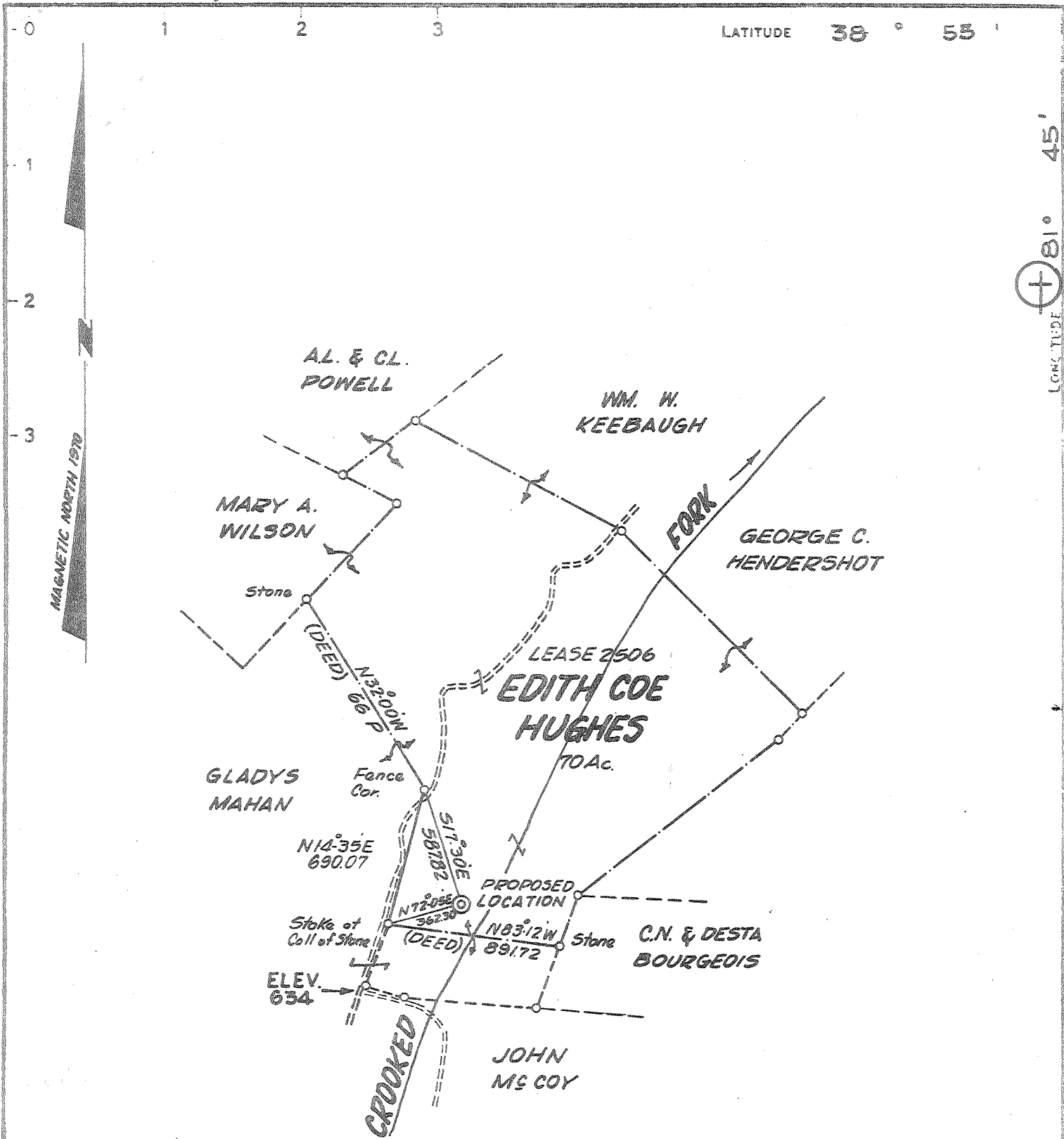
STATE OF WEST VIRGINIA
 DEPARTMENT OF MINES
 OIL AND GAS DIVISION
 CHARLESTON
 WELL LOCATION MAP

File No. Jac-1244-PP
 PP CANCELLED

+ DENOTES LOCATION OF WELL ON UNITED STATES TOPOGRAPHIC MAPS. SCALE 1 TO 62,500. LATITUDE AND LONGITUDE LINES BEING REPRESENTED BY BORDER LINES AS SHOWN.

47-035

- DENOTES ONE INCH SPACES ON BORDER LINE OF ORIGINAL TRACING.



PARTIAL PLUG 3/6/78

- NEW LOCATION
- RECONDITION
- DRILL DEEPER
- ABANDONMENT

CERTIFICATE
 I, the undersigned, hereby certify that this map is correct to the best of my knowledge and belief and shows all the information required by paragraph 6 of the rules and regulations of the oil and gas section of the mining laws of West Virginia.
 Minimum degree of accuracy is one part in 200

NB 107 PG. 4B

Signed William D. Smully L.L.S.#116

COMPANY	DEVON CORP.		
ADDRESS	P.O. BOX 1433 CHARLESTON, W.VA.		
FARM	EDITH COE HUGHES		
MAP	OV-28	ACRES 250 UNIT	LEASE NO. 2506
WELL (FARM) NO.	1	SERIAL NO.	811
ELEVATION (SPIRIT LEVEL)	609.88		
QUADRANGLE	RAVENSWOOD EC		
COUNTY	JACKSON	DISTRICT	RAVENSWOOD
POINT OF PROVEN ELEVATION	USCG DATA-ROAD INTERSECTION SHOWN ABOVE ELEV. 634		
FILE NO.	DRAWING NO.		
DATE	OCT. 7, 1970	SCALE	1" = 660'

STATE OF WEST VIRGINIA
DEPARTMENT OF MINES
OIL AND GAS DIVISION
CHARLESTON
WELL LOCATION MAP
FILE NO. JAC-1244
PP
+ DENOTES LOCATION OF WELL ON UNITED STATES TOPOGRAPHIC MAPS SCALE 1 TO 62 500. LATITUDE AND LONGITUDE LINES BEING REPRESENTED BY BORDER LINES AS SHOWN.
47-035
-- DENOTES ONE INCH SPACES ON BORDER LINE OF ORIGINAL TRACING.

Deep Well

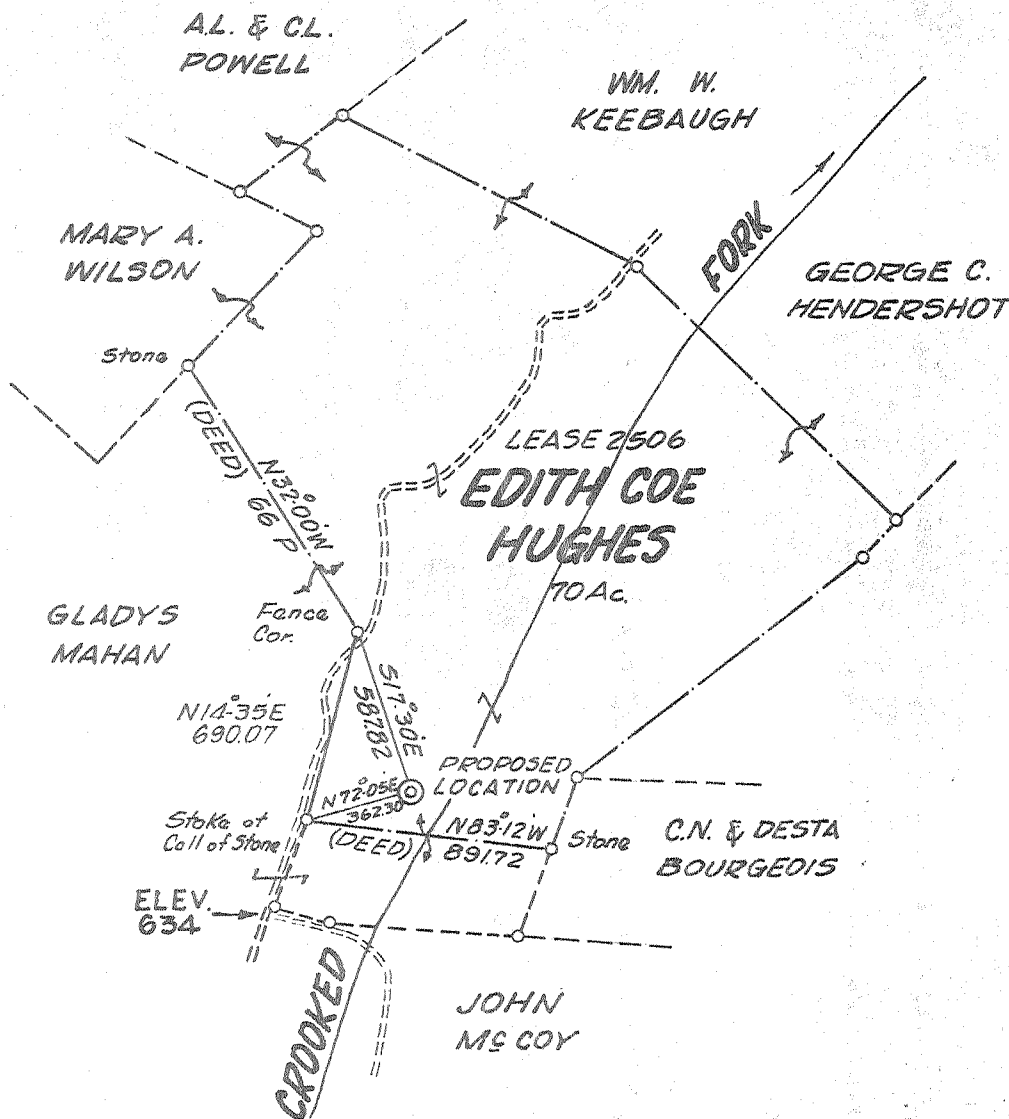
MAR 13 1978

LATITUDE 38 ° 53 '

LONGITUDE 81 ° 45'

1.99-S
~~2.00-S~~
~~2.15-W~~
 0.17-W

MAGNETIC NORTH 1970



CERTIFICATE

"I, the undersigned, hereby certify that this map is correct to the best of my knowledge and belief and shows all the information required by paragraph 6 of the rules and regulations of the oil and gas section of the mining laws of West Virginia."

Minimum degree of accuracy is one part in 200 Signed William P. Gaddy L.L.S.#116

NB 107 PG. 4B

- NEW LOCATION
- RECONDITION
- DRILL DEEPER
- ABANDONMENT

COMPANY COMMONWEALTH GAS CORPORATION
 ADDRESS P.O. BOX 1433 CHARLESTON, W.VA.
 FARM EDITH COE HUGHES
 MAP OV-28 ACRES 250 UNIT LEASE NO. 2506
 WELL (FARM) NO. 1 SERIAL NO. 811
 ELEVATION (SPIRIT LEVEL) 609.88
 QUADRANGLE RAVENSWOOD EC
 COUNTY JACKSON DISTRICT RAVENSWOOD
 POINT OF PROVEN ELEVATION USCG DATA-ROAD INTERSECTION
SHOWN ABOVE ELEV. 634
 FILE NO. _____ DRAWING NO. _____
 DATE OCT. 7, 1970 SCALE 1" = 660'

STATE OF WEST VIRGINIA
 DEPARTMENT OF MINES
 OIL AND GAS DIVISION
 CHARLESTON
WELL LOCATION MAP
 FILE NO. Jac-1244
9. MINUTES LOCATION OF WELL AND OTHER DATA CONTAINED
 MAPS SCALE 1 IN. = 660 FEET. THIS INFORMATION IS
 BEING REPRESENTED BY DOTTED LINES AS SHOWN
 DENOTES ONE INCH SPACES ON NUMBER LINE OF ORIGINAL TRAILING

6-6 Ripley 311

Deep Well (Newburg)
 OCT 24 1970



STATE OF WEST VIRGINIA
DEPARTMENT OF MINES
OIL AND GAS DIVISION

Rotary
Spudder
Cable Tools
Storage

Quadrangle Ravenswood

Permit No. Jac-1244

WELL RECORD

Oil or Gas Well Gas
(KIND)

Company Commonwealth Gas Corporation
Address P.O. Box 1433, Charleston, W. Va. 25325
Farm Edith Coe Hughes, et al Acres 250 Unit
Location (waters) Crooked Fork
Well No. 811 Elev. 609.88
District Ravenswood County Jackson
The surface of tract is owned in fee by Edith C. Hughes
Address Rt. 1, Ripley, W. Va.
Mineral rights are owned by Same, et al
Address " "

Casing and Tubing	Used in Drilling	Left in Well	Packers
Size			Kind of Packer
20"	18'6"	18'6"	
13-3/8"	146'6"	146'6"	
9-5/8"	231 1/4'	231 1/4'	Size of
8 1/4"			
7"	5280'7"	5280'7"	Depth set
5 3/16"			
3"			Perf. top
2-3/8"	5301'4"	5301'4"	Perf. bottom
Liners Used			Perf. top
			Perf. bottom

Drilling commenced October 28, 1970
Drilling completed November 13, 1970
Date Shot From To
With
Open Flow /10ths Water in Inch
/10ths Merc. in Inch
Volume Cu. Ft.
Rock Pressure lbs. hrs.
Oil bbls., 1st 24 hrs.

CASING CEMENTED SIZE No. Ft. Date
20 Bags behind 20" Csg. 150 Bags behind 13-3/8" Csg.
450 Bags behind 9-5/8" Csg. 50 Bags behind 7" Csg.
COAL WAS ENCOUNTERED AT FEET INCHES
FEET INCHES FEET INCHES
FEET INCHES FEET INCHES

WELL FRACTURED December 14, 1970 with 28,000# sand and 800 Bbls. water 5293' to 5301'

RESULT AFTER TREATMENT 14,500,000 cubic feet 14,500 MCFGPD Newburg
ROCK PRESSURE AFTER TREATMENT 1680# 48 Hrs.
Fresh Water Feet Salt Water Feet

Formation	Color	Hard or Soft	Top	Bottom	Oil, Gas or Water	Depth	Remarks
Soil			0	5			
Gravel			5	10			
Sand & Shale			10	20			
Sand			20	120			
Shale & Sand			120	135			
Sand			135	164			
Shale & Sand			164	394			
Shale			394	450			
Shale & Sand			450	539			
Shale			539	700			
Sand			700	823			
Shale			823	884			
Sand & Shale			884	963			
Sand			963	1228			
Shale & Sand			1228	1273			
Sand - Salt Sand			1273	1645			
Lime - Big lime			1645	1703			
Sand - Inj. plus			1703	2236			
Sand & Shale			2236	2570		FINAL GAUGE	
Shale			2570	4482			14,500,000 cu.
Gorniferous Lime - 463			4482	4590			
Oriskany Sand			4590	4598			
Lime - HELDERBERG & SALINA			4598	5293			
Newburg Sand			5293	5301			
Lime McKenzie			5301	5318	TOTAL DEPTH		

545

FEB 11 1971